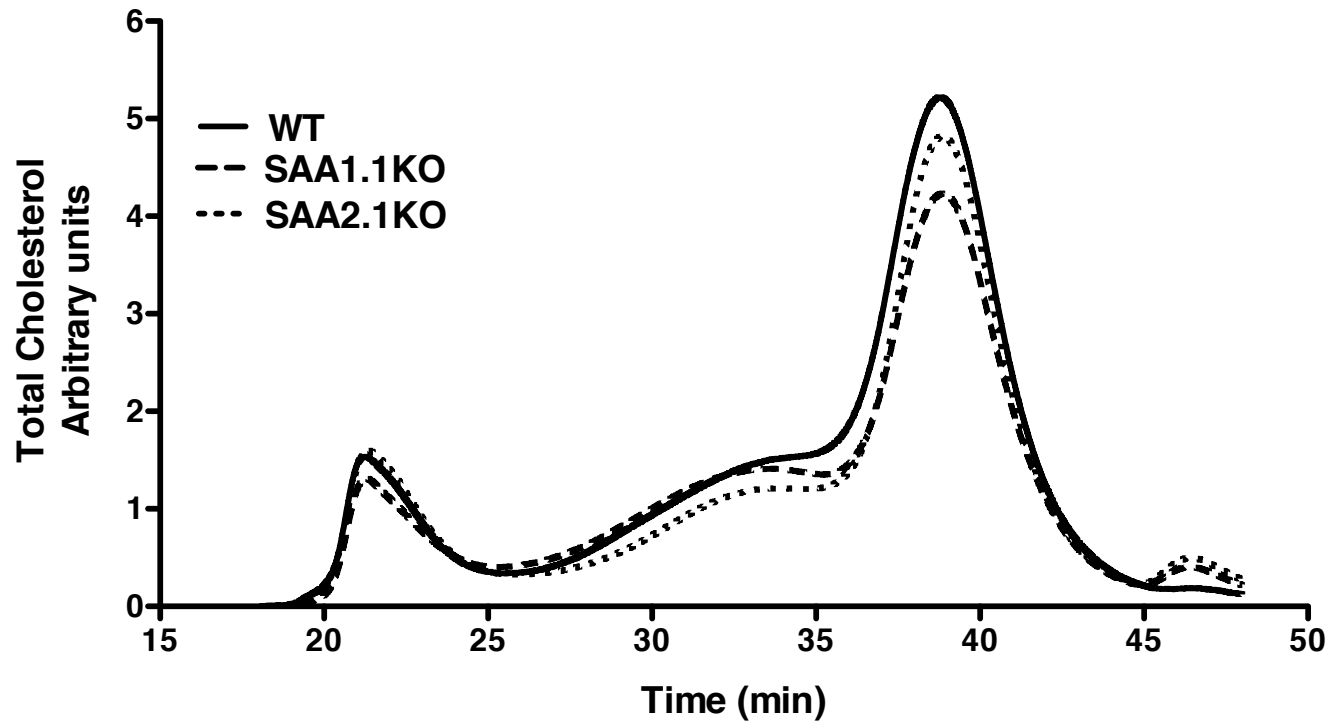


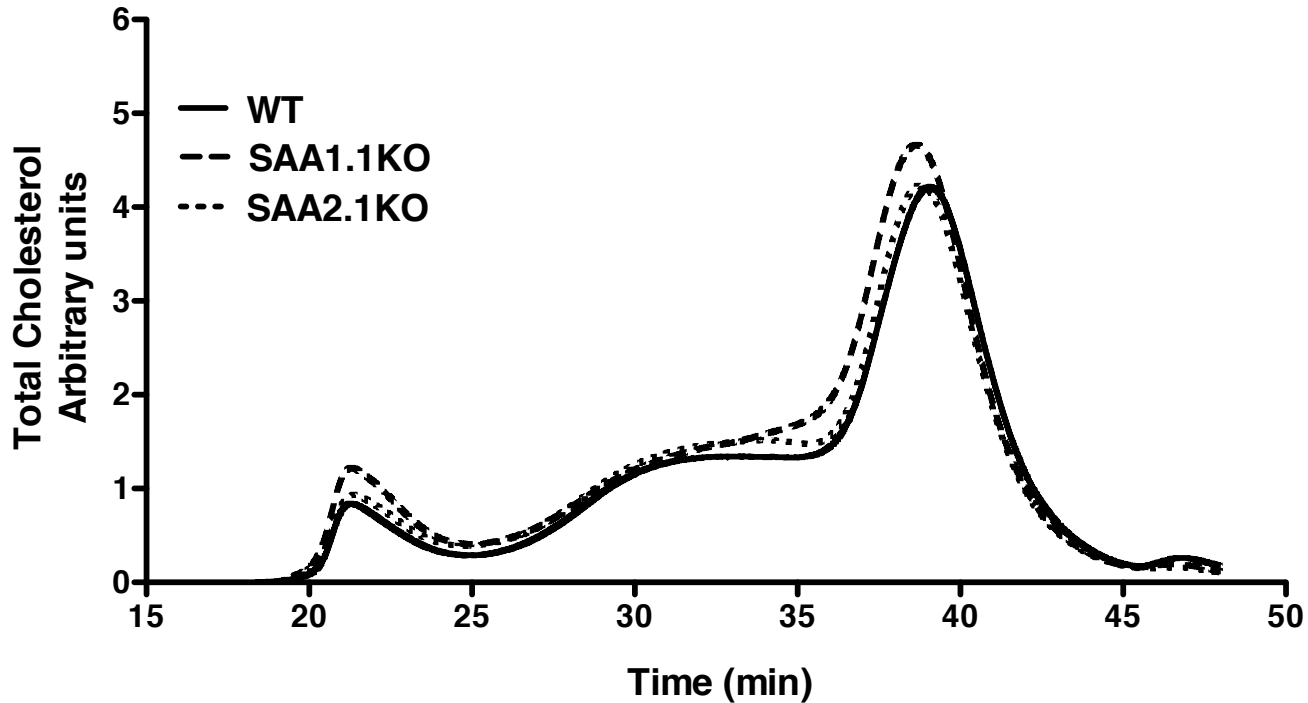
Supplemental figure IIIA



Supplemental Fig IIIA: Plasma lipoprotein cholesterol distribution in male mice during the acute phase

An acute phase response was elicited by injecting male mice with LPS ($4\mu\text{g/g}$ body weight) 24 h prior to plasma collection. Equal plasma aliquots from individual mice were pooled ($n=5$) and the lipoproteins were separated by fast protein liquid chromatography (FPLC) and analyzed as set out in Materials and Methods.

Supplemental figure IIIB



Supplemental Fig IIIB: Plasma lipoprotein cholesterol distribution in female mice during the acute phase
An acute phase response was elicited by injecting mice with LPS ($4\mu\text{g/g}$ body weight) 24 h prior to plasma collection. Equal plasma aliquots from individual mice were pooled ($n=5$) and the lipoproteins were separated by fast protein liquid chromatography (FPLC) and analyzed as set out in Materials and Methods.