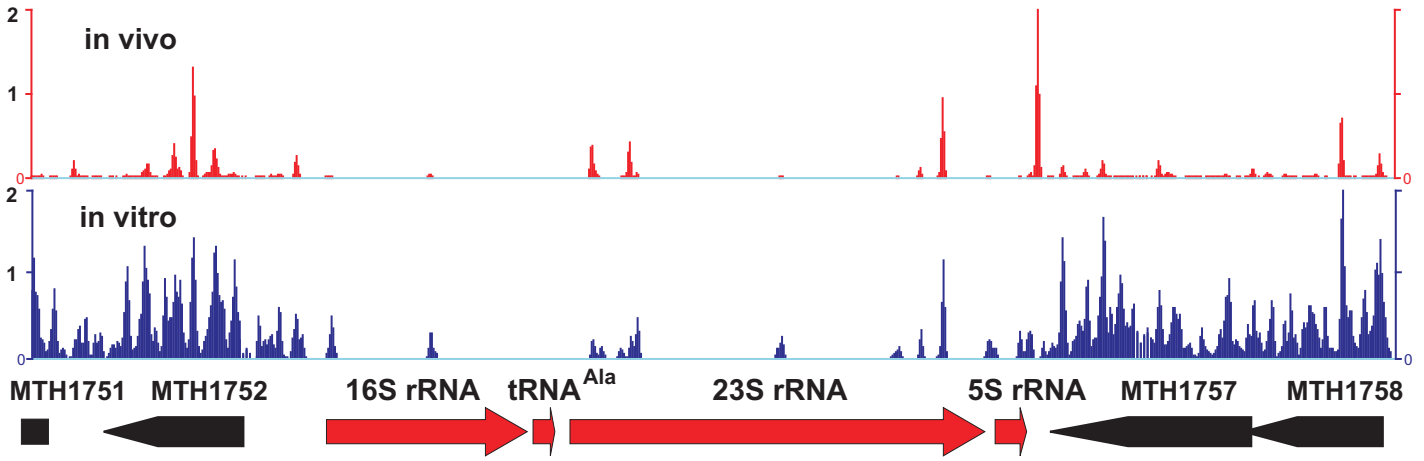


(a) *M. thermoautotrophicus* rDNA operon #1



(b) *M. thermoautotrophicus* rDNA operon #2

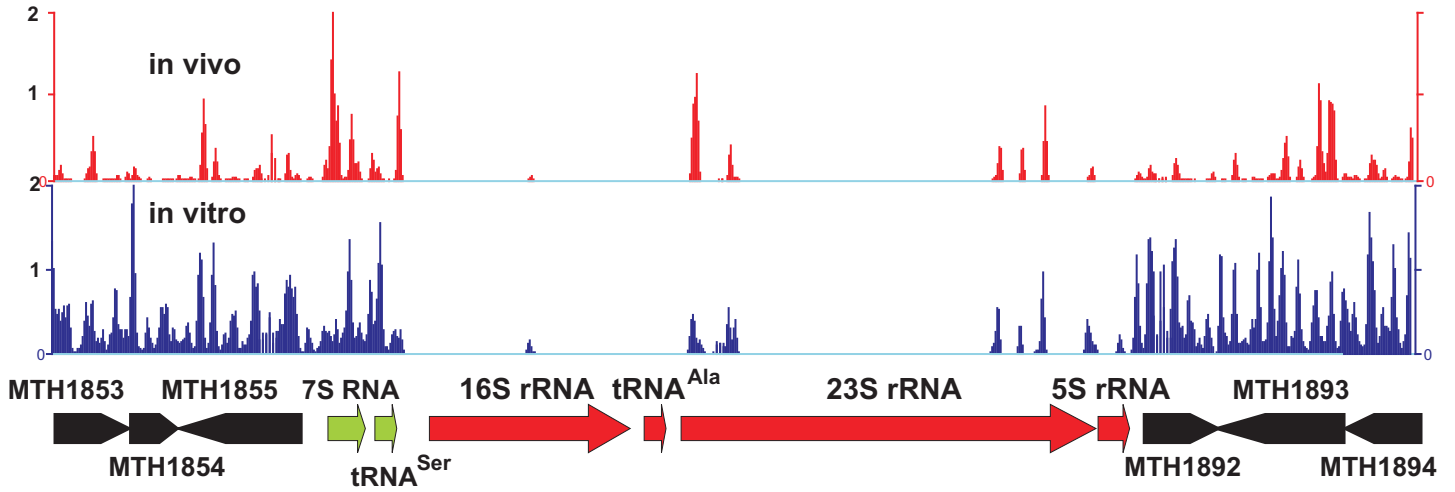


Figure S3

Legend to Supplementary Figure S3.

Profiles of the archaeal nucleosomes assembled by methanogen histones in vivo and in vitro on 10 Kbp regions of the *M. thermautotrophicus* genome [41]. The *M. thermautotrophicus* genome contains two rDNA operons located from genome position 1,602,209 to 1,607,044 (operon #1) and from 1,718,786 to 1,723,863 (operon #2). As illustrated, both operons encode 16S rRNA, tRNA^{Ala}, 23S rRNA and 5S rRNA sequences (red arrows), and genes encoding the 7S RNA and a tRNA^{Ser} (green arrows) are located immediately adjacent operon #2.