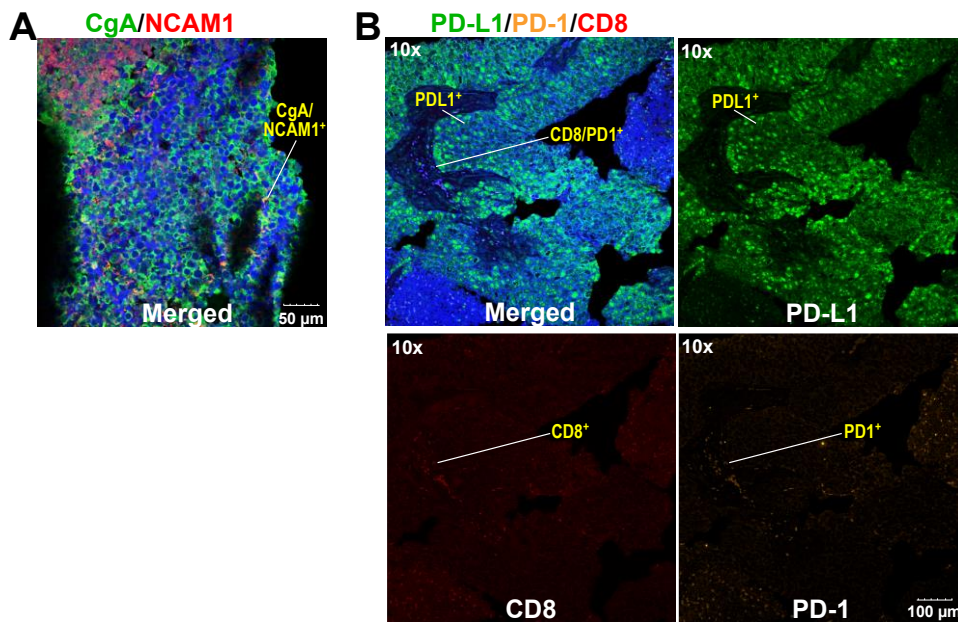


Supplementary file 3



**Fig. S2. Brain-metastasized NSCLC tissue of UK2035 patient stains positive for neuroendocrine markers, PD-1 and PD-L1.** Freshly resected CA lung tissue of UK2035 was FFPE-processed, sectioned as 4 µm slices, stained for CgA/NCAM1 (neuroendocrine tumor markers) in **A** and PD-1/PD-L1/CD8 in **B**, and analyzed by confocal microscopy, as described in the Experimental.