

Supplementary Materials

Recent Shrinkage and Fragmentation of Bluegrass Landscape in Kentucky

Bo Tao¹, Yanjun Yang¹, Jia Yang², Ray Smith¹, Fox James³, Ruane Alex C.⁴, Jinze Liu⁵, Wei Ren^{*1}

¹ Department of Plant and Soil Sciences, College of Agriculture, Food and Environment, University of Kentucky, KY 40546, USA;

bo.tao@uky.edu

² Department of Forestry, Mississippi State University, MS 39762, USA; Department of Forestry, University of Kentucky, KY 40546, USA;

³ Civil Engineering Department, University of Kentucky, Lexington, KY 40506, USA;

⁴ Goddard Institute for Space Studies, National Aeronautics and Space Administration, New York, 10025, USA;

⁵ Laboratory for High Performance Scientific Computing and Computer Simulation, Department of Computer Science, University of Kentucky, Lexington, KY 40506, USA;

*Correspondence: Wei Ren, wei.ren@uky.edu, Tel.: +1-859-257-1953; Department of Plant & Soil Sciences, College of Agriculture, Food, and Environment University of Kentucky, KY, USA

To be submitted to Remote Sensing

April 2020

Table S1. Conversions between various fragmentation categories between 2008-2018

	Area in 2008 (1000 ha)	Interior	Patch	Transitional	Edge	Perforated	Exterior
Interior	262.9	67.9%	0.5%	1.1%	4.1%	16.1%	10.2%
Patch	54.8	0.2%	38.7%	3.9%	0.7%	0.7%	55.8%
Transitional	130.6	0.3%	17.4%	43.2%	3.4%	3.0%	32.7%
Edge	226.1	1.2%	1.9%	12.5%	59.0%	11.2%	14.1%
Perforated	367.1	8.4%	1.4%	7.0%	13.5%	54.9%	14.7%
Exterior	1179.0	0.4%	0.5%	0.6%	0.5%	1.1%	96.9%

Figure S1: Groundwater sensitivity regions of the Bluegrass Region (modified from the map of Groundwater Sensitivity Regions of Kentucky [1])

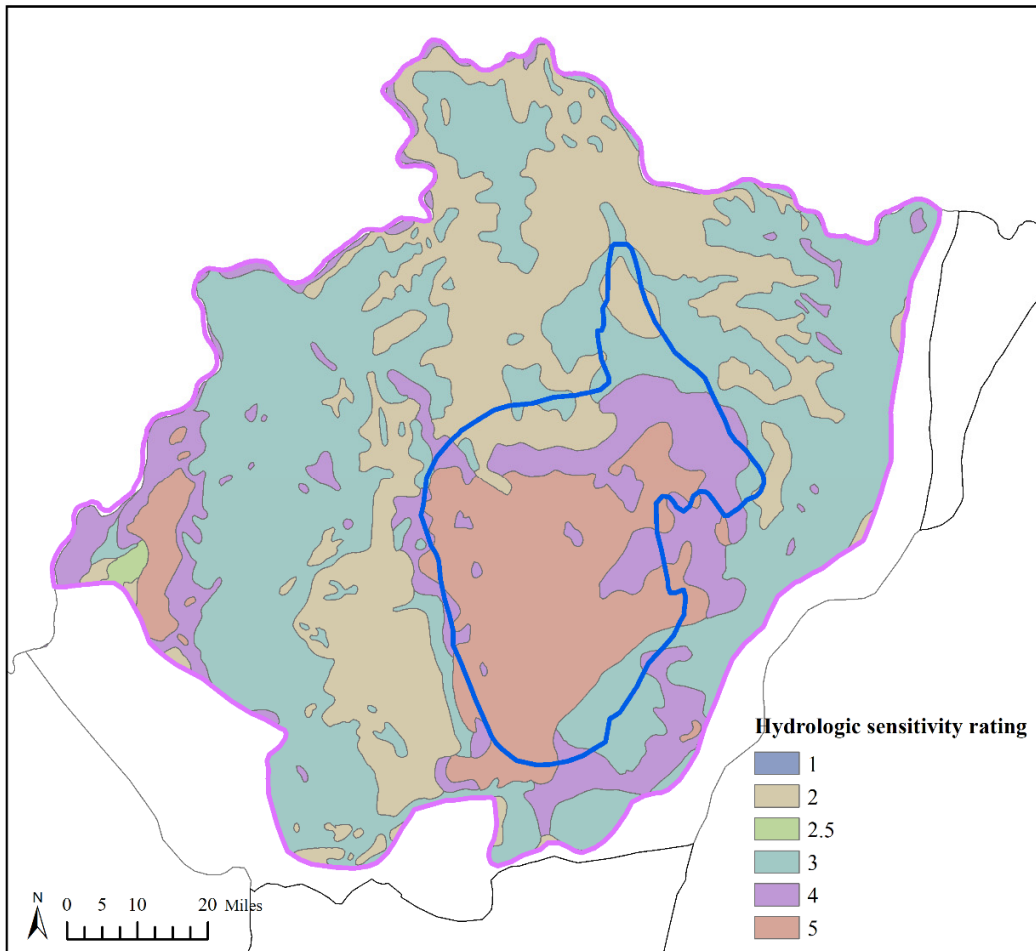
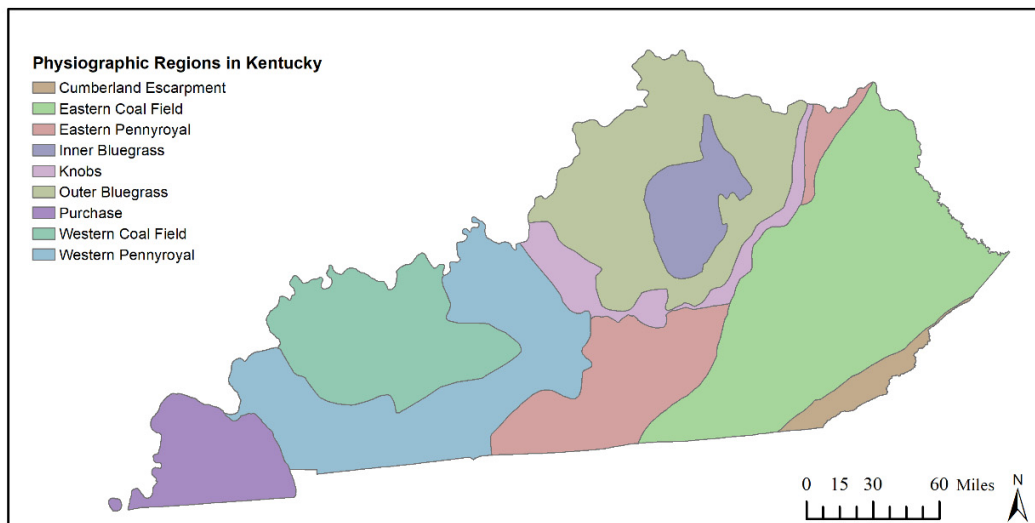


Figure S2: Map of physiographic regions in Kentucky [2]



References:

1. Ray, J.A.; Webb, a.S.; O'dell, P.W. Groundwater sensitivity regions of Kentucky. Kentucky Department for Environmental Protection—Division of Water—Groundwater Branch. 1:500,000. **1994**.
2. Survey), K.K.G. Physiographic diagram of Kentucky. Publication number 1786. University of Kentucky, Lexington, KY. Available at <https://www.uky.edu/KGS/geoky/physiographic.htm>, accessed April 2020. **2001**.