

# SUPPLEMENTARY INFORMATION

## *Ecological Applications*

### Appendix S1

## **Engineered nanoparticles interact with nutrients to intensify eutrophication in a wetland ecosystem experiment**

Marie Simonin<sup>1,2</sup>, Benjamin P. Colman<sup>1,3</sup>, Steven M. Anderson<sup>1,2</sup>, Ryan S. King<sup>1,4</sup>, Matthew T. Ruis<sup>1,2</sup>, Astrid Avellan<sup>1,5</sup>, Christina M. Bergemann<sup>1,2</sup>, Brittany G. Perrotta<sup>1,4</sup>, Nicholas K. Geitner<sup>1,6</sup>, Mengchi Ho<sup>1,7</sup>, Belen de la Barrera<sup>1,7</sup>, Jason M. Unrine<sup>1,8</sup>, Gregory V. Lowry<sup>1,5</sup>, Curtis J. Richardson<sup>1,7</sup>, Mark R. Wiesner<sup>1,6</sup>, Emily S. Bernhardt<sup>1,2</sup>

<sup>1</sup> Center for the Environmental Implications of Nanotechnology (CEINT), Duke University, Durham, North Carolina, USA

<sup>2</sup> Department of Biology, Duke University, Durham, North Carolina, USA

<sup>3</sup> Department of Ecosystem and Conservation Sciences, University of Montana, Missoula, Montana, USA

<sup>4</sup> Department of Biology, Baylor University, Waco, Texas, USA

<sup>5</sup> Department of Civil and Environmental Engineering, Carnegie Mellon University, Pittsburgh, Pennsylvania, USA

<sup>6</sup> Department of Civil and Environmental Engineering, Duke University, Durham, North Carolina, USA

<sup>7</sup> Duke University Wetland Center, Nicholas School of the Environment, Duke University, Durham, North Carolina, USA

<sup>8</sup> Department of Plant and Soil Sciences, University of Kentucky, Lexington, Kentucky, USA

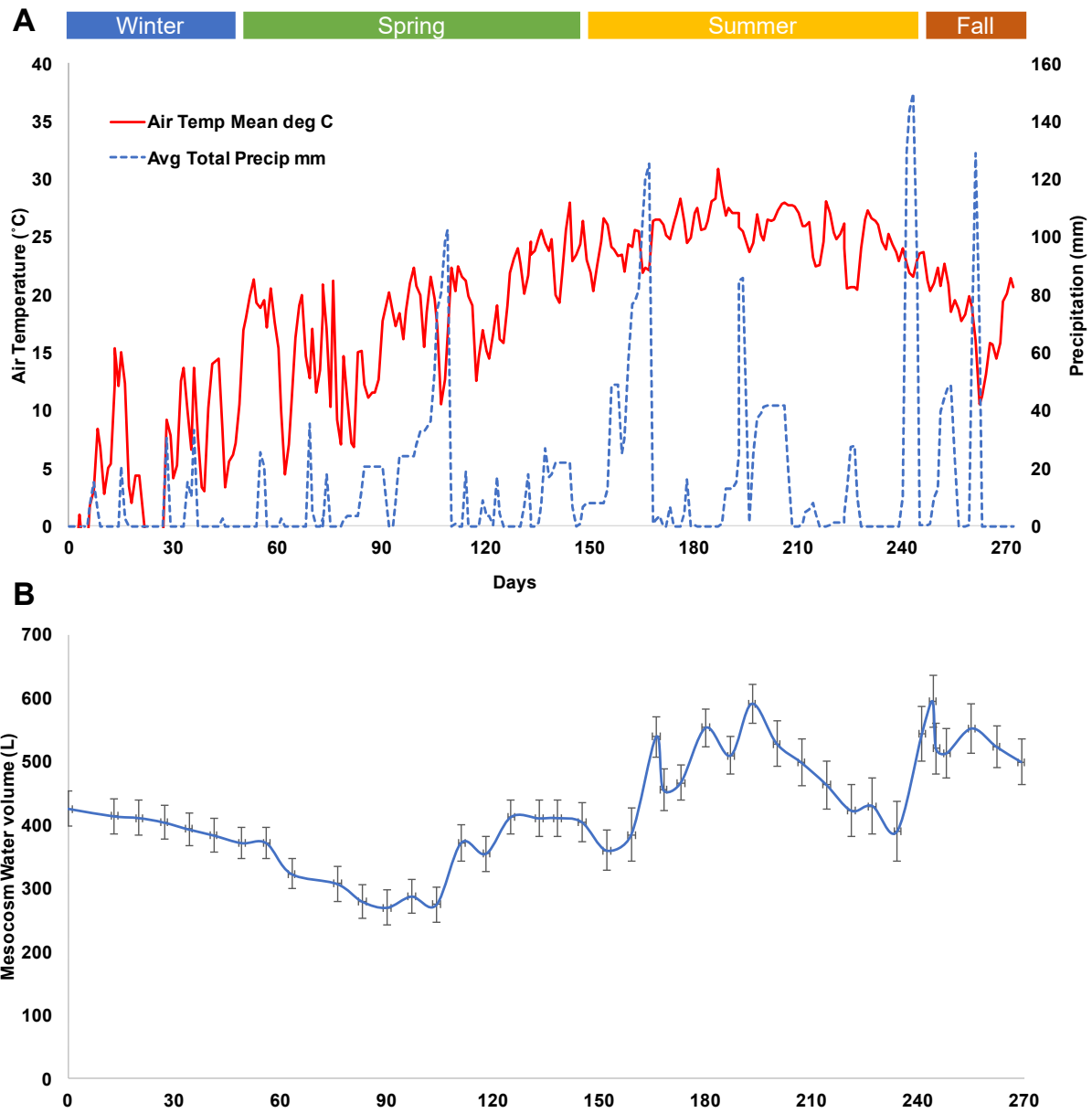


Fig. S1: A. Daily average of air temperature (°C) and total daily precipitation (mm) at the mesocosm site and season information. B. Averaged mesocosm water volume during the experiment.