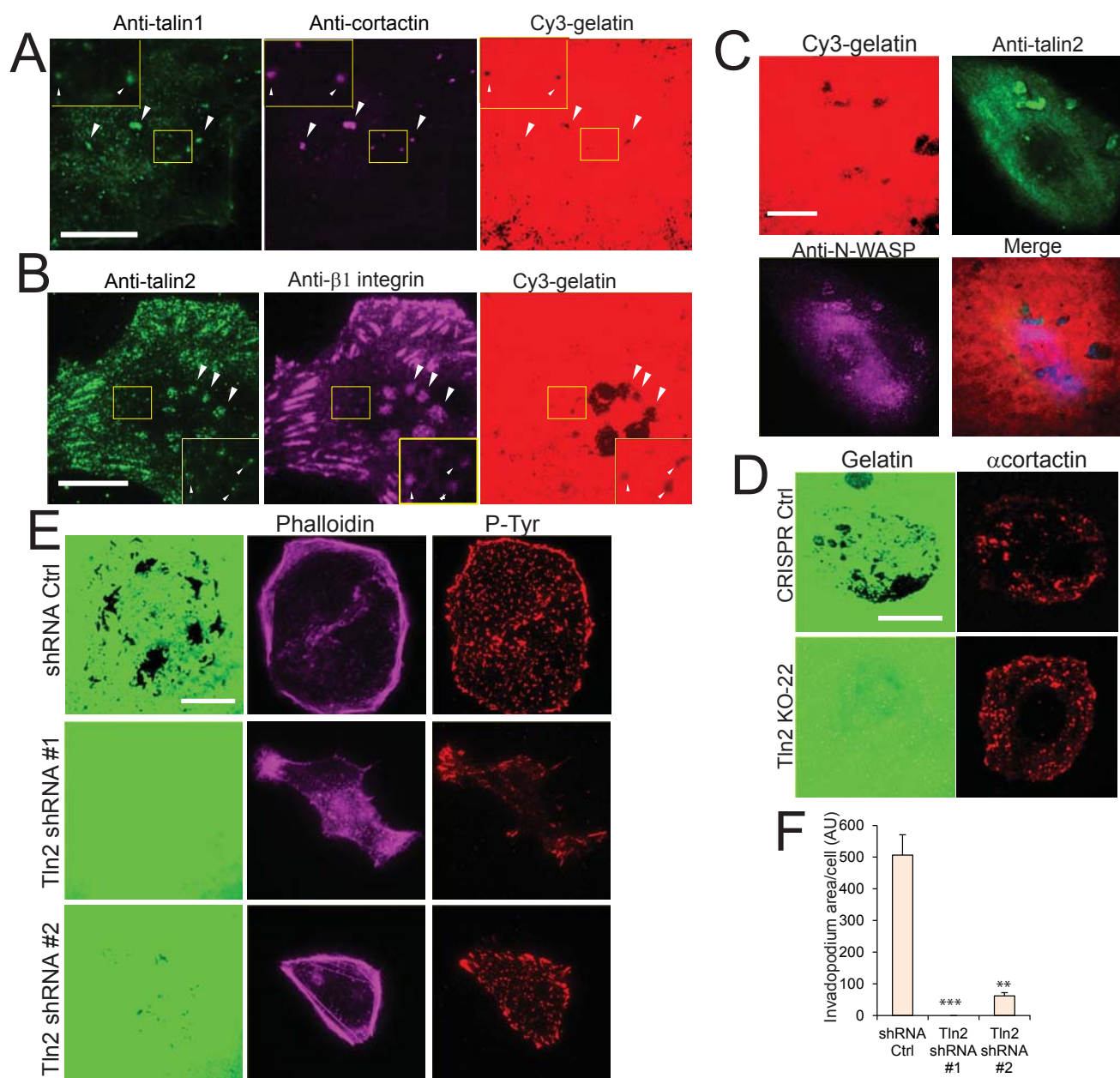


Qi Supplementary Figure S4



Supplementary Fig. S4. The role of talin in invadopodium development. **A.** MDA-MB-231 cells were cultured on immobilized Cy3-gelatin on glass-bottom dishes, fixed, stained for talin1 plus cortactin. Arrow heads point to co-localized spots. Insets show magnified invadopodia in the box. Scale Bars: 20 μm. **B.** U2 OS cells were cultured on immobilized Cy3-gelatin on glass-bottom dishes, fixed, stained for talin2 plus β1 integrin. Arrow heads point to co-localized spots. Scale Bars: 20 μm. **C.** U2 OS cells were cultured on immobilized Cy3-gelatin, stained for talin2 and N-WASP. Scale bar, 20 μm. **D.** Talin2-null U2 OS cells were cultured on immobilized Alexa488-gelatin, stained for cortactin, using CRISPR vector cells as a control. Scale bar, 20 μm. **E.** U2 OS cells that express shRNA control, talin2 shRNA #1 or #2 were cultured on Alexa488-gelatin immobilized on glass-bottom dishes, fixed and stained with Alexa 647-phalloidin and anti-phospho-Tyrosine antibody. Scale bar, 20 μm. Data are presented as mean ± SEM of 3 independent experiments. **P<0.01, ***P < 0.001.