

# Binge Alcohol Exposure Causes Neurobehavioral Deficits and GSK3 $\beta$ Activation in the Hippocampus of Adolescent Rats

Zhe Ji<sup>1,2</sup>, Lin Yuan<sup>1</sup>, Xiong Lu<sup>1</sup>, Hanqing Ding<sup>1</sup>, Jia Luo<sup>1,3</sup>, Zun-Ji Ke<sup>1</sup>

Figure 6:

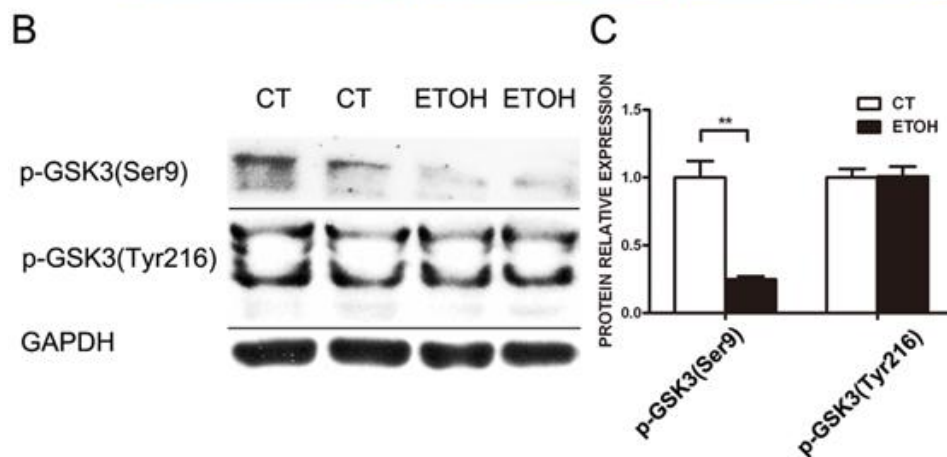
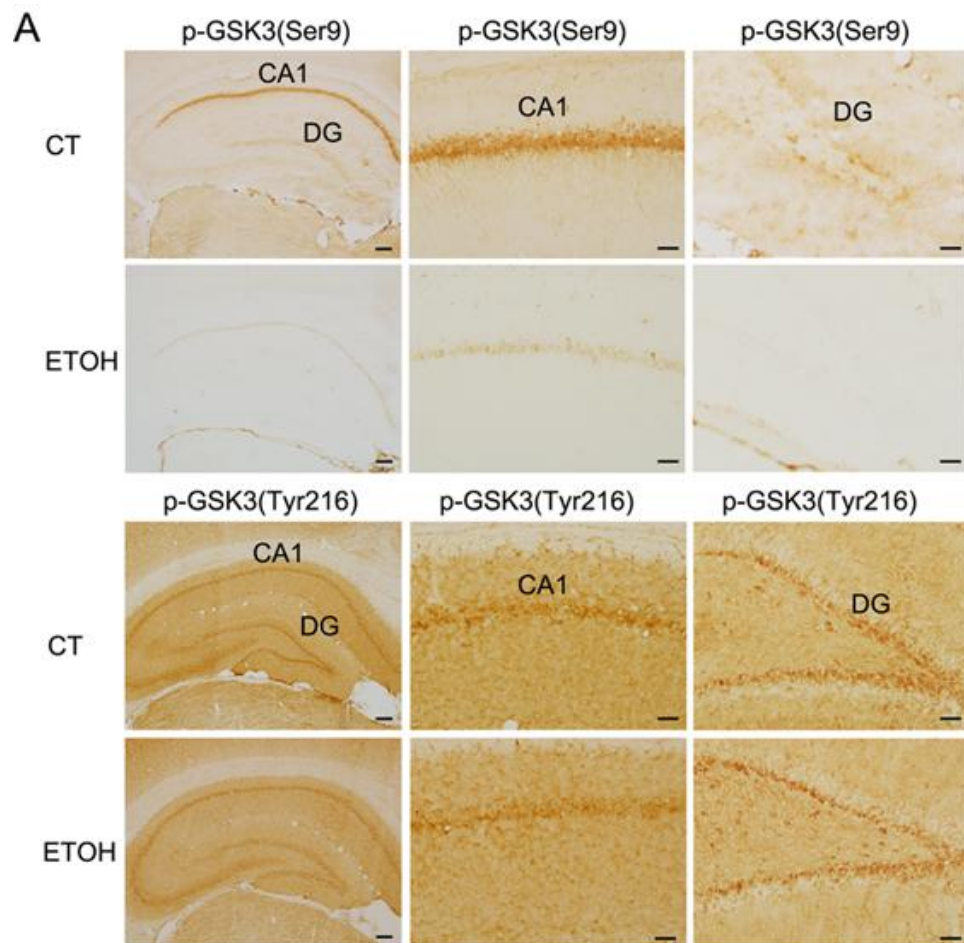


Figure 6A

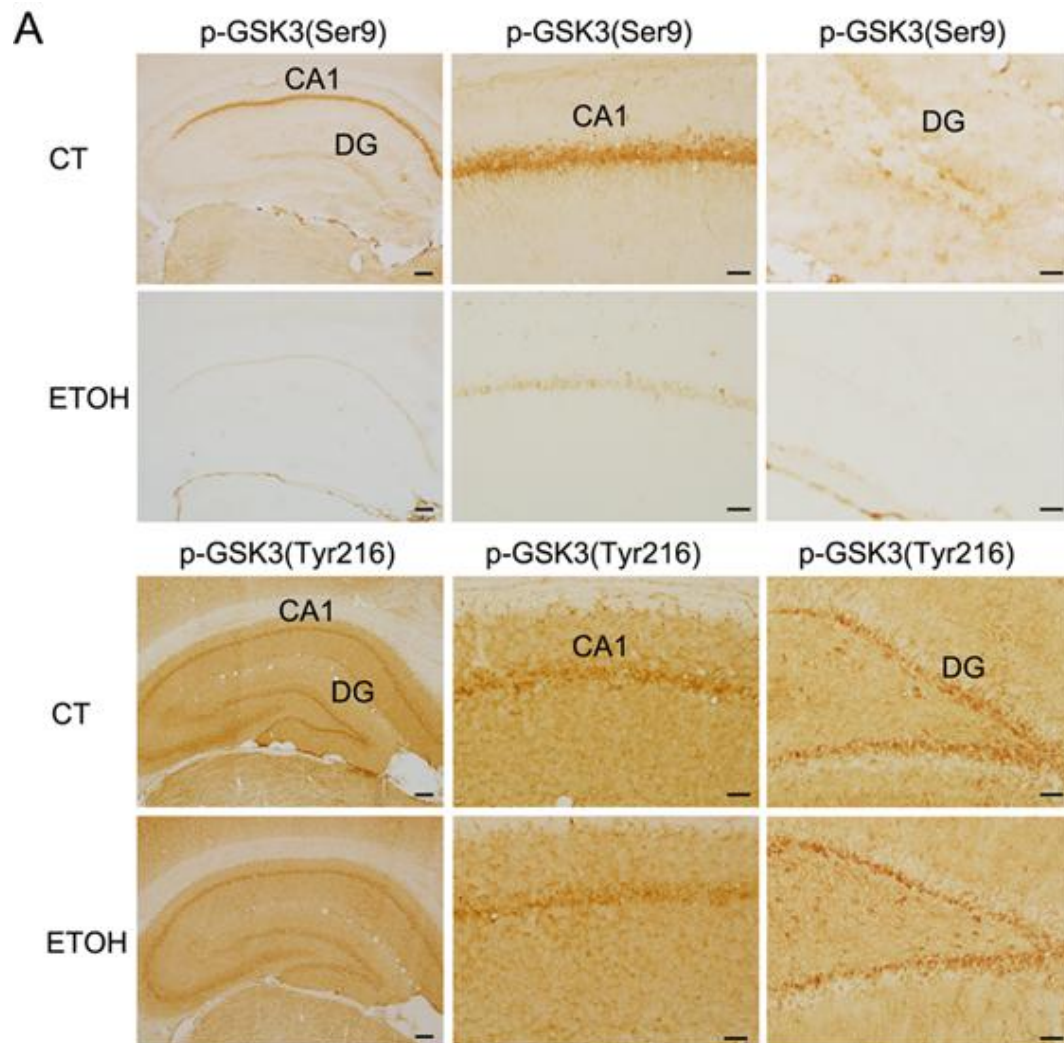
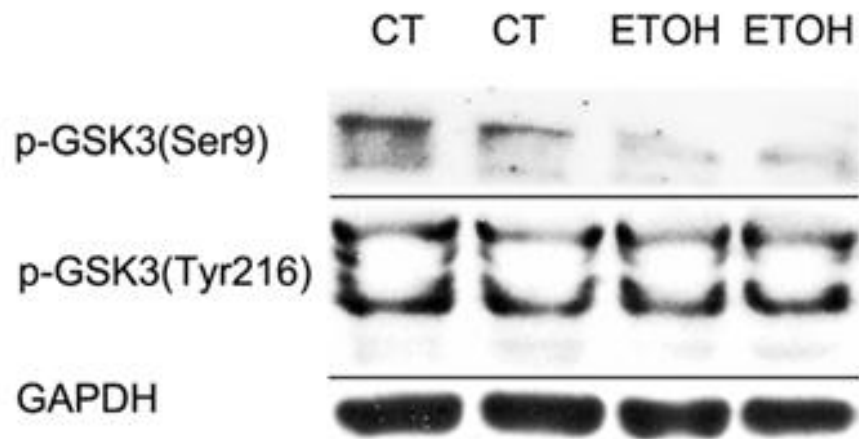
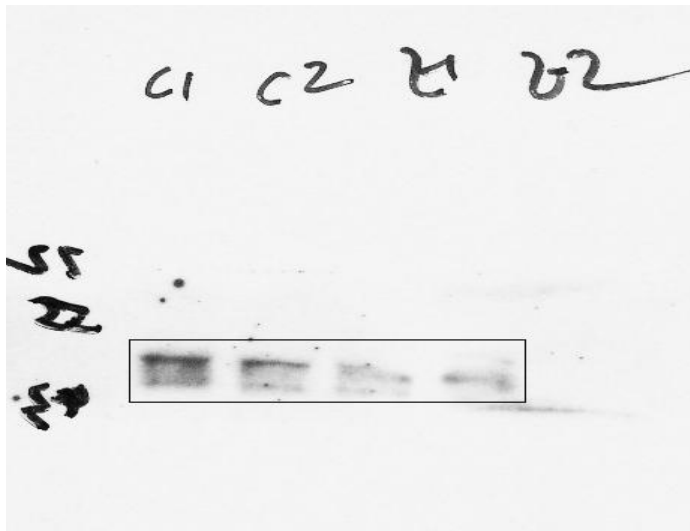


Figure 6B

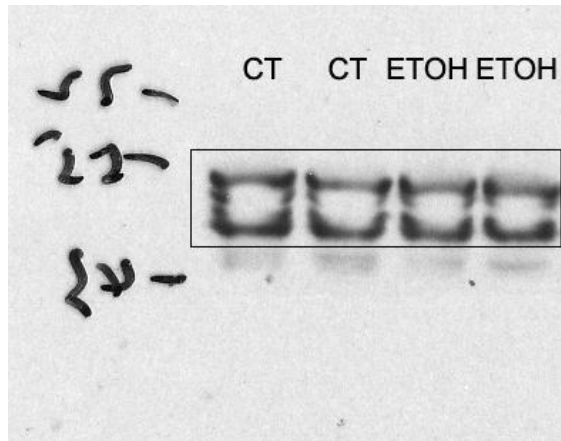
B



p-GSK3(Ser9)



p-GSK3(Thr216)



GAPGH

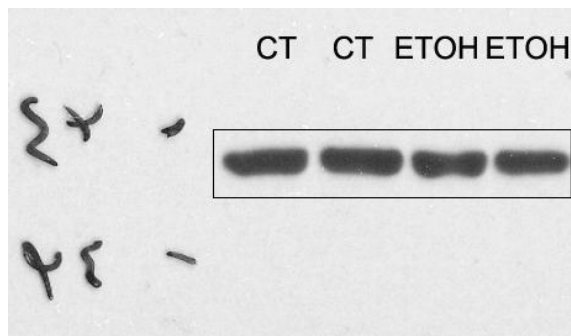


Figure 6C

