



University of Kentucky  
UKnowledge

---

International Grassland Congress Proceedings

21st International Grassland Congress / 8th  
International Rangeland Congress

---

## The Improvement of Degraded Permanent Grasslands by Grazing in the NE Romania

C. Samuil

*University of Agricultural Sciences and Veterinary Medicine, Romania*

V. Vintu

*University of Agricultural Sciences and Veterinary Medicine, Romania*

T. Iacob

*University of Agricultural Sciences and Veterinary Medicine, Romania*

I. C. Popovici

*University of Agricultural Sciences and Veterinary Medicine, Romania*

Follow this and additional works at: <https://uknowledge.uky.edu/igc>



Part of the [Plant Sciences Commons](#), and the [Soil Science Commons](#)

This document is available at <https://uknowledge.uky.edu/igc/21/6-2/10>

The 21st International Grassland Congress / 8th International Rangeland Congress took place in Hohhot, China from June 29 through July 5, 2008.

Proceedings edited by Organizing Committee of 2008 IGC/IRC Conference

Published by Guangdong People's Publishing House

---

This Event is brought to you for free and open access by the Plant and Soil Sciences at UKnowledge. It has been accepted for inclusion in International Grassland Congress Proceedings by an authorized administrator of UKnowledge. For more information, please contact [UKnowledge@lsv.uky.edu](mailto:UKnowledge@lsv.uky.edu).

## The improvement of degraded permanent grasslands by grazing in the NE Romania

Samuil C., Vintu V., Iacob T. and Popovici I.C.

University of Agricultural Sciences and Veterinary Medicine from Iasi, 3 Mihail Sadoveanu Avenue, 700490, Romania. E-mail xsamuil@univagro-iasi.ro

**Key words :** grasslands, fertilization, degraded, production, *Festuca*

**Introduction** The permanent grasslands from northeastern Romania, situated on soils with low natural fertility, are weakly productive and have an improper flower composition. The resulted fodder is of low quality. The main means for improving these grasslands consist in adjusting soil fertility, changing the dominance in the vegetal canopy and their good management. The paper presents the influence of organic and mineral fertilization on degraded permanent grasslands of *Festuca valesiaca* L. from the Moldavian forest steppe, during 2006-2007.

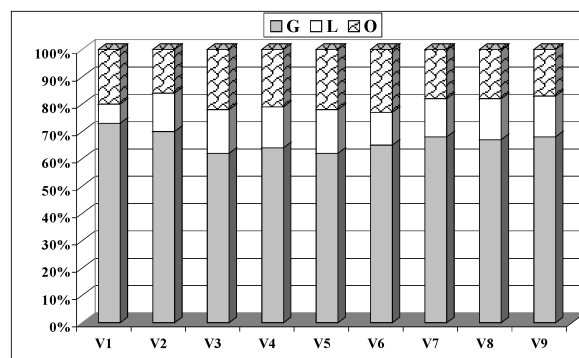
**Materials and methods** In this paper, we present the results obtained in the trial set up at Ezareni, at the height of 107 m, on 18-20% slope. The year 2007 was very dry at Ezareni - Iasi, and the climatic conditions were unfavourable to the good development of vegetation on grasslands. The experimental factors were: V<sub>1</sub>-Unfertilized control; V<sub>2</sub>-10 t ha<sup>-1</sup> cattle manure applied every year + N<sub>50</sub> P<sub>36</sub>; V<sub>3</sub>-10 t ha<sup>-1</sup> manure applied every year + N<sub>50</sub> +<sub>50</sub> P<sub>72</sub>; V<sub>4</sub>-20 t ha<sup>-1</sup> cattle manure applied every 2 years + N<sub>50</sub> P<sub>36</sub>; V<sub>5</sub>-20 t ha<sup>-1</sup> cattle manure applied every 3 years + N<sub>50</sub> +<sub>50</sub> P<sub>72</sub>; V<sub>6</sub>-30 t ha<sup>-1</sup> cattle manure applied every 3 years + N<sub>50</sub> P<sub>36</sub>; V<sub>7</sub>-30 t ha<sup>-1</sup> cattle manure applied every 3 years + N<sub>50</sub> +<sub>50</sub> P<sub>72</sub>; V<sub>8</sub>-40 t ha<sup>-1</sup> cattle manure applied every 3 years + N<sub>50</sub> P<sub>36</sub>; V<sub>9</sub>-40 t ha<sup>-1</sup> cattle manure applied every 3 years + N<sub>50</sub> +<sub>50</sub> P<sub>72</sub>. The harvesting was done at the period of ear formation in dominant grasses, and yields were expressed in dry matter (DM). The changes found in the structure of canopy were determined through the gravimetric and planimetric methods.

**Results** Data presented in Table 1 showed that fertilization had a positive influence on yield, according to applied rates and combinations. The mean yields were between 2.16 and 2.34 t/ha DM, in variants fertilized with 10 t ha<sup>-1</sup> cattle manure, applied every year on the background of N<sub>50</sub> P<sub>36</sub> or N<sub>50</sub> +<sub>50</sub> P<sub>72</sub>, between 2.24 and 2.48 t/ha DM in variants fertilized with 20 t ha<sup>-1</sup> cattle manure, applied every year on the background of N<sub>50</sub> P<sub>36</sub> or N<sub>50</sub> +<sub>50</sub> P<sub>72</sub>, 2.52-2.68 t/ha DM in variants fertilized with 30 t ha<sup>-1</sup> cattle manure, applied every year on the background of N<sub>50</sub> P<sub>36</sub> or N<sub>50</sub> +<sub>50</sub> P<sub>72</sub>, and between 2.78 and 3.42 t/ha DM in variants fertilized with 40 t ha<sup>-1</sup> cattle manure, applied every year on the background of N<sub>50</sub> P<sub>36</sub> or N<sub>50</sub> +<sub>50</sub> P<sub>72</sub>. The highest yields were obtained in the variants at which 10, 20, 30, 40 t/ha of manure were applied every year, every 2 or 3 years, together with N<sub>50</sub> +<sub>50</sub> P<sub>72</sub>. The fertilization has led to the improvement of the botanical structure, by increasing the participation percentage of legumes, at the same variants of fertilization, and slightly diminishing the percentage of other plants (Figure 1).

**Table 1** Influence of fertilization on DM yield (t ha<sup>-1</sup>)

Fertilization variant	Production of DM yield (t ha <sup>-1</sup> ) 2006-2007
V <sub>1</sub>	1.45
V <sub>2</sub>	2.16*
V <sub>3</sub>	2.34**
V <sub>4</sub>	2.24**
V <sub>5</sub>	2.48***
V <sub>6</sub>	2.52***
V <sub>7</sub>	2.68***
V <sub>8</sub>	2.78***
V <sub>9</sub>	3.42***

\* = P < 0.05; \*\* = P < 0.01; \*\*\* = P < 0.001;



**Figure 1** Influence of fertilization on canopy structure (%).

**Conclusions** The permanent grasslands of *Festuca valesiaca* L. from Romania react very well to the fertilization, which may be an important measure of recovering permanent grasslands, and promoting, at the same time, the concept of organic agriculture. The best results of production, but also of improving the flower structure were obtained in variants where different rates of manure were applied every year, every 2 or 3 years, together with maximum nitrogen rates.

### References

- Cardașol V. (1994)-Fertilisation organique des prairies permanentes roumaines ; synth. des résultats d'essais multiloaux et de longue durée. *Revue Fourrages*, 139, Versailles, France.
- Samuil C., Vintu V., Iacob T., (2007)-Influence of mineral and organic fertilization on improving the productivity of permanent grasslands from forest steppe in the northeastern part of Romania. *14<sup>th</sup> Symposium of the European Grassland Federation*, Gent, Belgium.