



University of Kentucky
UKnowledge

International Grassland Congress Proceedings

XXI International Grassland Congress / VIII
International Rangeland Congress

The Study on the Inflorescence Differentiation of *Bromus ciliatus* L. cv. Xilinguole

G. You
Inner Mongolia Agricultural University, China

F. Shi
Inner Mongolia Agricultural University, China

L. Wang
Inner Mongolia Agricultural University, China

Follow this and additional works at: <https://uknowledge.uky.edu/igc>



Part of the [Plant Sciences Commons](#), and the [Soil Science Commons](#)

This document is available at <https://uknowledge.uky.edu/igc/21/1-6/14>

The XXI International Grassland Congress / VIII International Rangeland Congress took place in Hohhot, China from June 29 through July 5, 2008.

Proceedings edited by Organizing Committee of 2008 IGC/IRC Conference

Published by Guangdong People's Publishing House

This Event is brought to you for free and open access by the Plant and Soil Sciences at UKnowledge. It has been accepted for inclusion in International Grassland Congress Proceedings by an authorized administrator of UKnowledge. For more information, please contact UKnowledge@lsv.uky.edu.

The study on the inflorescence differentiation of *Bromus ciliatus* L cv .Xilinguole

G.You ,F .Shi* ,and L .Wang

Inner Mongolia Agric . Univ . , Hohhot , Inner Mongolia 010018 P.R . of China ; * E-mail sf10000@126 . com

Key words : *Bromus ciliatus* L cv .Xilinguole , inflorescence differentiation , growth cone

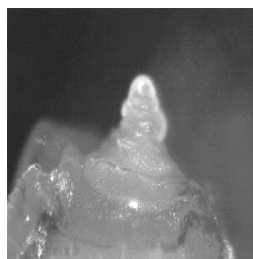
Introduction *Bromus ciliatus* L cv Xilinguole is a good and important forage . In this research the inflorescence differentiation of the varieties and the difference of three lines (9701 ,9708 , 9714) which are chosen from the *Bromus ciliatus* L cv Xilinguole were studied . It provides the theoretical basis for production and reasonable utilization of *Bromus ciliatus* L cv .Xilinguole . It is also important for breeding the new varieties .

Materials and methods The materials were planted in the Experimental Station of Inner Mongolia Agricultural University .

The differentiation process of nutrition growth cone and reproductive growth cone 50 plants which have the similar heftiness and height with *Bromus ciliatus* L cv Xilinguole were chosen from first ten days of April . Observe the plants every one day . We should observe from the buds of tillering , when the spikelet pumped , and take the buds observed .When the inflorescence can be seen , paying attention to the inflorescence . After heading , taking the top of spikelet studied . When floret begins developing ,taking the first and second spikelet studied . Take photos by Olympus .

Comparis inflorescence differentiation of different lines of *Bromus ciliatus* L . Take three lines of 9701 , 9708 , 9714 go public . Observing anatomy and take photo the plants every two days .

Results Tip meristem is Hemisphere ,when it is at the stage of the vegetative growth phase . New leaf primordium produces from the basal of growth cone continually . The plant which is at this stage has 1-3 leaves . The growth cone elongate . ,when it is at the stage of the single edge phase . Bract primordium can be found . The plant which is at this stage has 4-5 leaves . Spikelet primordium produces from the leaf axil of Bract primordium , when it is at the stage of the double edge phase . Spikelet primordium and Bract primordium compose the double edge , spikelet primordium produces top-down process . The plant which is at this stage often has 6-8 leaves . At the stage of spikelet differentiation stage , floret primordium produces from the leaf axil of the lemma primordium . It starts from below . The plant which is at this stage has more than 8 leaves . The stamen primordium differentiated earlier than the pistil primordium , when it is at the stage of floret differentiation .The floret which is at the bottom develops faster than the top one . Stamen and pistil develop and maturate at the same time .



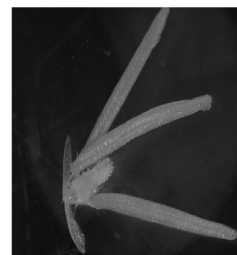
Vegetative growth phase



Double edge phase Spikelet



Spikelet differentiation stage



Floret differentiation stage

Conclusions The growth cone of these three kinds is hemispherical , when they are at the tillering stage . The kind of 9714 whose processes of growth cone is more obviously than the other two kinds , when it is at the booting stage . The kind of 9714 develops fast , when it is at the previous booting stage , for it stays longer at the single edge phase and double edge phase . At the floret differentiation stage , stamen of 9708 is more mature , at the same time lemmas of 9714 are lagging growing .

References

- Martin M L and R J Field , (1993) , A development scale for perennial ryegrass . In *proceedings of the X VII International Grassland Congress* ,1679-1680 .
- Hare M D ,(1993) , Effects of time and rate of application of the growth regulators paclobutrazol and flurprimidol on seed yield in tall fescue *Proceedings of the X VII International Grassland Congress* ,1658-1660 .