

University of Kentucky

UKnowledge

Library Presentations

University of Kentucky Libraries

4-2023

Library Assessment Dashboard

Julene L. Jones

University of Kentucky, julene.jones@uky.edu

Follow this and additional works at: https://uknowledge.uky.edu/libraries_present



Part of the [Archival Science Commons](#)

[Right click to open a feedback form in a new tab to let us know how this document benefits you.](#)

Repository Citation

Jones, Julene L., "Library Assessment Dashboard" (2023). *Library Presentations*. 275.

https://uknowledge.uky.edu/libraries_present/275

This Presentation is brought to you for free and open access by the University of Kentucky Libraries at UKnowledge. It has been accepted for inclusion in Library Presentations by an authorized administrator of UKnowledge. For more information, please contact UKnowledge@lsv.uky.edu, rs_kbnotifs-acl@uky.edu.



University of Kentucky

From the Selected Works of Julene L. Jones

April, 2023


Library Assessment Dashboard

Julene L. Jones, *University of Kentucky*



Available at: <https://works.bepress.com/julene/50/>

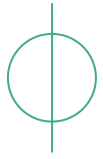
Library Assessment Dashboard



Live as of
01/2023

<https://uky.libinsight.com/assess>

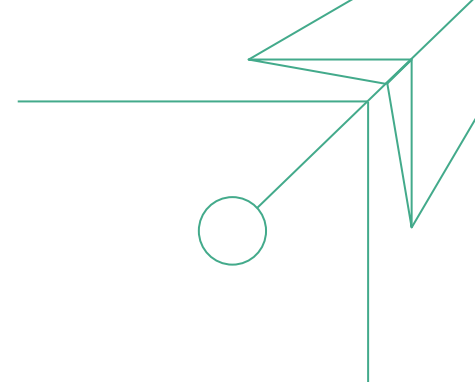
From UKL site: About the Libraries / Organization, Mission & Values / Impact & Effectiveness



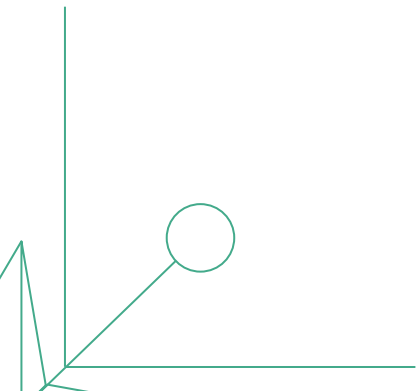
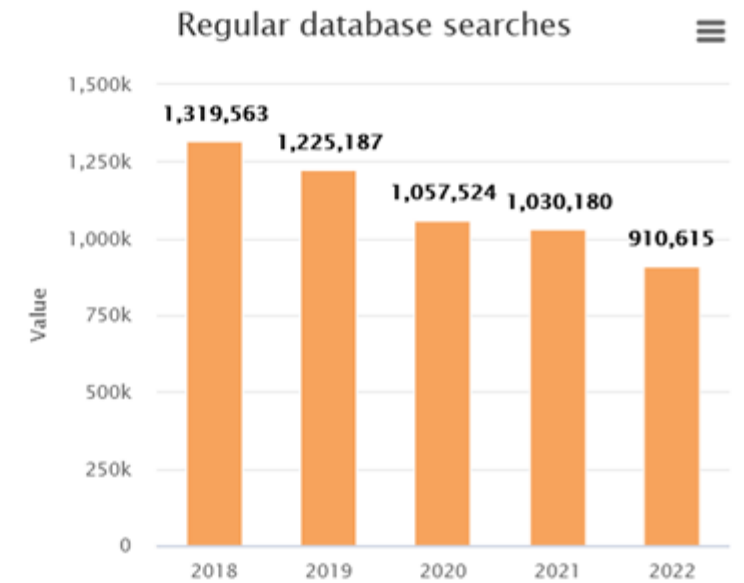
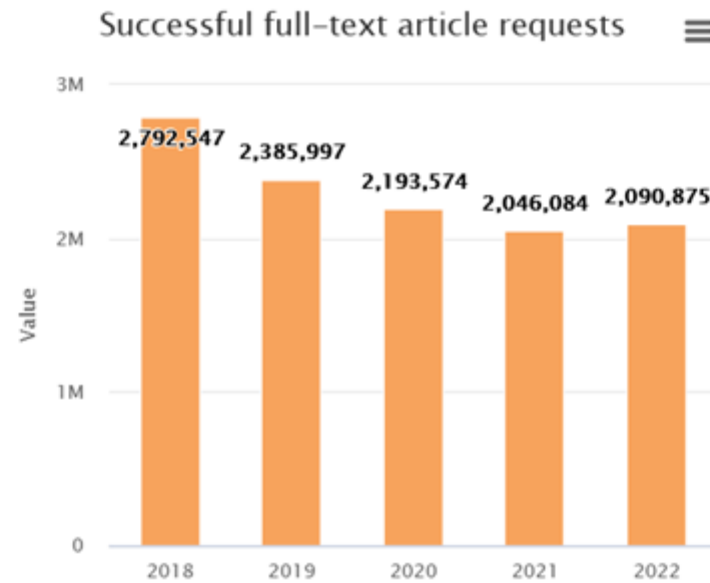
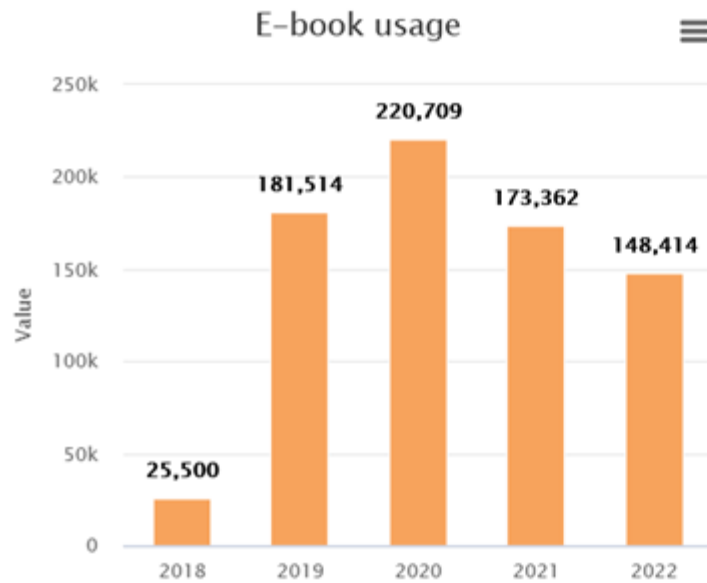
Usage

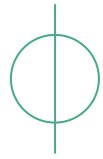
Includes:

- Initial circulation of materials (i.e., not recalls)
- Primary source materials usage
- ILL transactions
- And shown here, Electronic resources usage



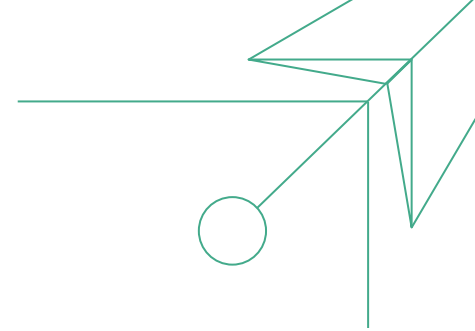
Electronic resources usage





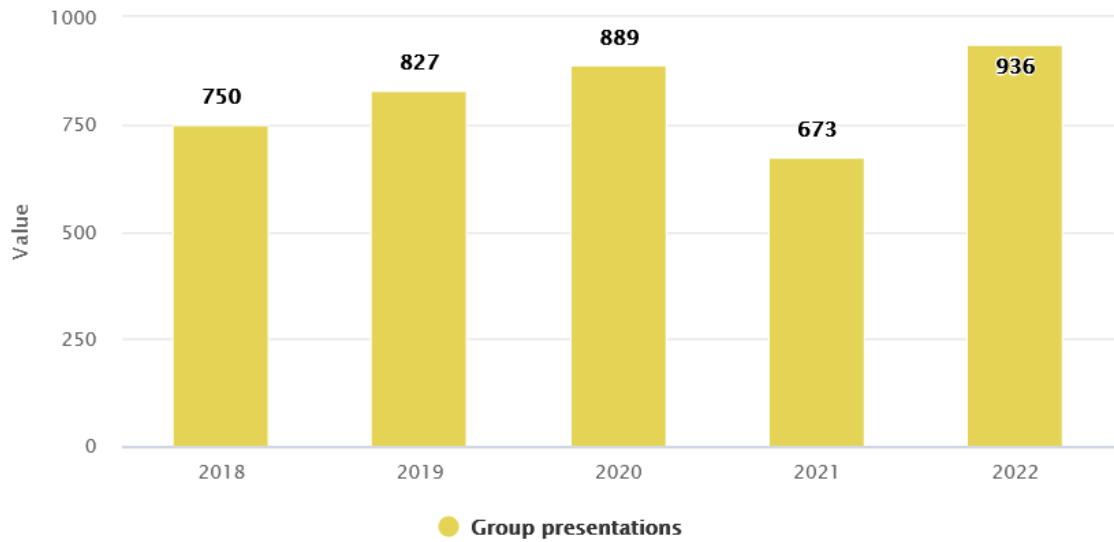
Engagement

- Includes:
- Library instruction sessions and attendance (shown here)
 - Counts of reference transactions & consults
 - Social media engagement

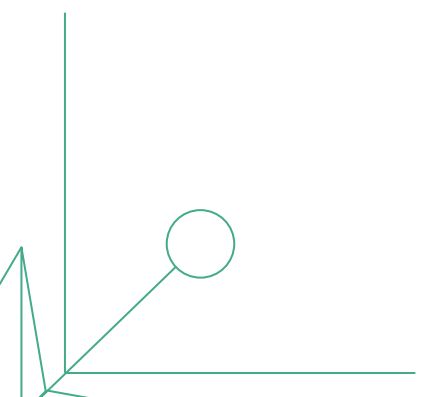
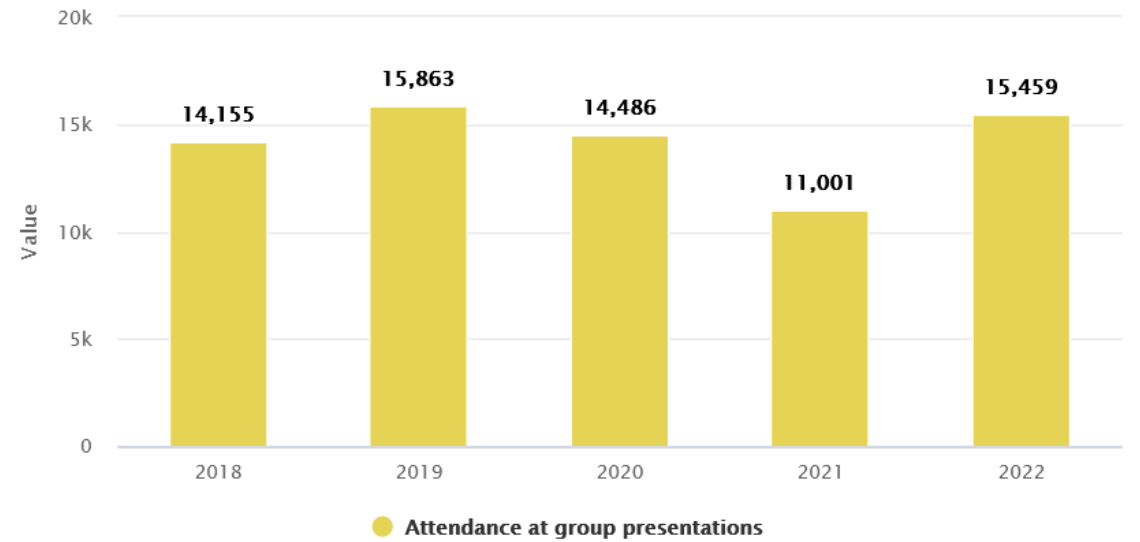


Library instruction sessions (virtual or face to face), tours, and workshops

Count of library instruction sessions (virtual or face to face), tours, and workshops



Attendance at library instruction sessions (virtual or face to face), tours, and workshops





Acknowledgements

Beth Kraemer
Courtney Taulbee
Jay-Marie Bravent
Jennifer Hootman
Rebecca Jude