



10-13-2020

Age-Related Losses in Cardiac Autonomic Activity during a Daytime Nap

Pin-Chun Chen
University of California, Irvine

Negin Sattari
University of California, Irvine

Lauren N. Whitehurst
University of Kentucky, lauren.whitehurst@uky.edu

Sara C. Mednick
University of California, Irvine

Follow this and additional works at: https://uknowledge.uky.edu/psychology_facpub



Part of the [Biostatistics Commons](#), and the [Cognitive Psychology Commons](#)

[Right click to open a feedback form in a new tab to let us know how this document benefits you.](#)

Repository Citation

Chen, Pin-Chun; Sattari, Negin; Whitehurst, Lauren N.; and Mednick, Sara C., "Age-Related Losses in Cardiac Autonomic Activity during a Daytime Nap" (2020). *Psychology Faculty Publications*. 212.
https://uknowledge.uky.edu/psychology_facpub/212

This Article is brought to you for free and open access by the Psychology at UKnowledge. It has been accepted for inclusion in Psychology Faculty Publications by an authorized administrator of UKnowledge. For more information, please contact UKnowledge@lsv.uky.edu.

Age-Related Losses in Cardiac Autonomic Activity during a Daytime Nap

Digital Object Identifier (DOI)

<https://doi.org/10.1111/psyp.13701>

Notes/Citation Information

Published in *Psychophysiology*, v. 58, issue 7, e13701.

© 2020 The Authors

This is an open access article under the terms of the [Creative Commons Attribution-NonCommercial-NoDerivs](#) License, which permits use and distribution in any medium, provided the original work is properly cited, the use is non-commercial and no modifications or adaptations are made.

**SPECIAL ISSUE TITLE: AGING AND
CEREBROVASCULAR HEALTH: STRUCTURAL,
FUNCTIONAL, COGNITIVE, AND
METHODOLOGICAL IMPLICATIONS**

Age-related losses in cardiac autonomic activity during a daytime nap

Pin-Chun Chen^{1,2} | Negin Sattari¹ | Lauren N. Whitehurst³ | Sara C. Mednick¹ 

¹Department of Cognitive Science,
University of California, Irvine, CA, USA

²Department of Statistics, University of
California, Irvine, CA, USA

³Department of Psychology, University of
Kentucky, Lexington, KY, USA

Correspondence

Sara C. Mednick, Department of Cognitive
Science, University of California, Irvine,
CA 92697, USA.

Email: mednicks@uci.edu

Funding information

National Institutes of Health, Grant/
Award Number: RO1AG046646 and
RO1AG061355

Abstract

In healthy, young individuals, a reduction in cardiovascular output and a shift from sympathetic to parasympathetic (vagal) dominance is observed from wake into stages of nocturnal and daytime sleep. This cardiac autonomic profile, measured by heart rate variability (HRV), has been associated with significant benefits for cardiovascular health. Aging is associated with decreased nighttime sleep quality and lower parasympathetic activity during both sleep and resting. However, it is not known whether age-related dampening of HRV extends to daytime sleep, diminishing the cardiovascular benefits of naps in the elderly. Here, we investigated this question by comparing the autonomic activity profile between young and older healthy adults during a daytime nap and a similar period of wakefulness (quiet wake; QW). For each condition, from the electrocardiogram (ECG), we obtained beat-to-beat HRV intervals (RR), root mean square of successive differences between adjacent heart-beat-intervals (RMSSD), high-frequency (HF), low-frequency (LF) power, and total power (TP), HF normalized units (HF_{nu}), and the LF/HF ratio. As previously reported, young subjects showed a parasympathetic dominance during NREM, compared with REM, prenap rest, and WASO. Moreover, older, compared to younger, adults showed significantly lower vagally mediated HRV (measured by RMSSD, HF, HF_{nu}) during NREM. Interestingly, however, no age-related differences were detected during prenap rest or QW. Altogether, our findings suggest a sleep-specific reduction in parasympathetic modulation that is unique to NREM sleep in older adults.

KEYWORDS

aging, autonomic activity, heart rate variability, nap, sleep

This is an open access article under the terms of the Creative Commons Attribution-NonCommercial-NoDerivs License, which permits use and distribution in any medium, provided the original work is properly cited, the use is non-commercial and no modifications or adaptations are made.

© 2020 The Authors. Psychophysiology published by Wiley Periodicals LLC on behalf of Society for Psychophysiological Research

1 | INTRODUCTION

The autonomic nervous system (ANS) plays a major role in cardiovascular adaptations to environmental changes and is thus critical for global allostasis (McEwen, 2002), or the ability of organisms to maintain stability, adaptability, and health in response to actual or perceived environmental and psychological demands. The ANS is generally conceived to have two major branches—the sympathetic system, associated with energy mobilization, and the parasympathetic system, associated with vegetative and restorative functions. In healthy adults, the activity of these branches is in dynamic balance and is dependent on activity and rest cycles. For example, there is a well-documented circadian rhythm to the ANS such that sympathetic activity is higher during daytime hours and parasympathetic activity increases at night (Jarczok et al., 2019). Along with these circadian shifts, sleep also directly influences the ANS, and vice versa, with restorative, parasympathetic processes dominating during nighttime sleep (Trinder et al., 2012). In younger adults, daytime naps present with similar cardiac autonomic profiles as nighttime sleep (Cellini et al., 2016; Whitehurst et al., 2018), suggesting that daytime sleep too, serves a restorative function. These circadian- and sleep-dependent shifts in the ANS are critical to the maintenance of autonomic balance between parasympathetic and sympathetic branches (Boudreau et al., 2013) and are beneficial for health and cognition (Chen et al., 2020a, 2020b; Thayer et al., 2009; Whitehurst et al., 2016, 2020). As we age, ANS functions can become more rigid, with decreased β -adrenoreceptor response, decreases in baroreflex activity, diminished heart rate responses to acetylcholine, and decreases in cardiac parasympathetic activity (Chadda et al., 2018). Studies show that these age-related ANS changes may contribute to autonomic imbalance, in which the sympathetic system is hyperactive and/or the parasympathetic system is hypoactive. Autonomic imbalance is associated with various pathological conditions, such as cardiovascular morbidity and mortality, diabetes, and dementia (Thayer & Lane, 2007; Thayer et al., 2010). It is not yet known whether cardiac autonomic profiles during daytime naps differ in both older and younger adults, which was the goal of the present investigation. Such information would contribute to a comprehensive understanding of sleep's role in ANS activity across the life span.

One way to determine ANS activity is through heart rate variability (HRV) measurements that reflect global ANS changes, and specifically, parasympathetic activity. Parasympathetic/vagal activity is implicated in two measurements extracted from the electrocardiogram (ECG). First, is the root mean square of successive differences between adjacent heart beat-to-beat intervals (RMSSD) where higher intervals between heart beats represent greater parasympathetic/vagal innervation (Task Force, 1996). The second is high-frequency power (HF; 0.15–0.40 Hz), which is indicative of vagally mediated respiration (Task Force, 1996). Decreased parasympathetic activity

is associated with excessive inflammatory functioning (Pavlov & Tracey, 2012), and heightened risk for chronic disease (see Kemp & Quintana, 2013 for a review), including cardiovascular disease, which is the leading cause of death and disability in the United States (National Center for Health Statistics, 2018). Beyond physical health, HRV has also been linked to greater self-regulation of cognitive, emotional, and social domains (see Shaffer et al., 2014 for a review). For example, Thayer and colleagues proposed the Neurovisceral Integration Model and argued that HRV reflects the activity of an integrative neural network that flexibly regulates physiological, cognitive, and emotional responses (Smith et al., 2017; Thayer & Lane, 2009). Specifically, individuals with higher HRV during wake (measured during or immediately prior to cognitive testing) have been shown to perform better on a wide range of cognitive tasks that engage the prefrontal cortex, including working memory (n-back task: Hansen et al., 2003; operation-span task: Mosley et al., 2018), cognitive inhibition (Stroop task: Hansen et al., 2004), and emotion regulation (Williams et al., 2015). Considering HRV may be a critical predictor of psychological and physiological health, HRV can be considered an access point for intervention as sleep is a reoccurring condition where ANS activity is naturally modulated, and importantly, good sleep has been tied to better physical and cognitive health outcomes (see Whitehurst et al., 2020 for a review).

Sleep and the ANS influence each other in a bidirectional fashion. Changes in the ANS modulate sleep onset and the transition between the different sleep stages, and each sleep stage is associated with a distinct autonomic profile (see Trinder et al., 2012 for a review). As the brain shifts from wake to sleep, the body undergoes marked changes, including heart rate deceleration and relative increases in parasympathetic activity during nonrapid eye movement (NREM) sleep (Trinder et al., 2001). Young adults show variations in HRV according to sleep stages, switching from vagally dominated NREM (N2 and N3) sleep to sympathetic-parasympathetic balanced rapid eye movement (REM) sleep (Brandenberger et al., 2001). ANS activity during nocturnal sleep has been considered as a “cardiovascular holiday” (see Tobaldini et al., 2013 for a review) due to its characteristic drop in blood pressure and parasympathetic dominance during NREM sleep compared with wake. However, whether such cardiovascular benefits are solely sleep-dependent has received some challenges.

Circadian rhythms influence both sleep (Borb & Achermann, 1999) and cardiovascular activity (Guo & Stein, 2003), and may contribute to promoting parasympathetic activation. As such, daytime sleep may confer less restorative benefit (i.e., parasympathetic tone) than nighttime sleep. However, few studies have investigated cardiac profiles during daytime naps. Two recent studies report that, in healthy young subjects, vagal activity is modulated by daytime sleep (Cellini et al., 2016), and that similar HRV profiles exist between naps and nighttime sleep (Whitehurst et al., 2018). These

studies support the notion that naps, like nighttime sleep, may serve as a mini-cardiovascular break. Further, and aligned with the Neurovisceral Integration Model, studies have shown that parasympathetic activity during a daytime nap facilitates improvement in long-term memory (Whitehurst et al., 2016) and working memory (Chen et al., 2020a). Furthermore, these previous investigations did not directly address whether cardiovascular benefits during a nap are sleep-specific or whether benefits can also be achieved from a comparable duration of quiet wake during the day. Specifically, these studies typically compared the profile across the nap sleep stages to a five-minute presleep rest period, reporting increased parasympathetic activity during NREM sleep compared with presleep rest. Yet, parasympathetic dominance can be induced during periods of quiet wake not associated with sleep. For example, mindfulness has been shown to enhance parasympathetic influences on the heart rate (increased HF and decreased LF; Heckenberg et al., 2018; Krygier et al., 2013; Mankus et al., 2013). In addition, listening to classical music for 20 min also increases parasympathetic tone (increased HF and RMSSD; Lin et al., 2013). Complicating matters, methods for measuring awake resting HRV varies between studies. Sleep studies measure HRV during five minutes of presleep rest while subjects lay on a bed preparing for sleep (Cellini et al., 2016), while waking studies measure it in subjects who are seated instead of lying down, but not preparing for sleep (Mattarozzi et al., 2019). One goal of the current study is to determine if QW and presleep rest confer the same cardiac profile, information that will greatly inform our understanding of HRV activity across waking states and methodologies.

Aging is linked to a decline in cardiovascular control (Colosimo et al., 1997) and substantial research shows that aging is associated with a decrease in HRV and sympathovagal imbalance (O'Brien et al., 1986; Russoniello, 2013; Santillo et al., 2012). The age-related reduction in resting HRV has been observed in both cross-sectional comparisons and in a longitudinal study (Sinnreich et al., 1998). In particular, a study found two significant declines in waking ANS activity across aging, one around adolescence/early adulthood and the second at about 60 years old with a continual decline to 80 years old (Zhang, 2007). But, studies on age-related HRV changes during sleep remain scarce. The two studies that do exist report a loss of parasympathetic activity (measured by HF HRV and SDNN; standard deviation of normal to normal RR intervals) during nocturnal NREM sleep in the elderly compared with young subjects, with no significant sleep-stage dependent variations (Brandenberger et al., 2003; Crasset et al., 2001). These results imply that decreased HRV in older adults may be especially prominent during NREM sleep stages, compared to waking. The age-related cardiac profiles during a daytime nap, to our knowledge, have not yet been studied. Given that cardiovascular disease is the leading cause of death in the United States (Benjamin et al., 2017), the lack of research examining the relationship between napping

and cardiovascular modulation is surprising considering that 90% of adults 60+ yrs in America nap at least once a week (and 30% nap > twice a week), and that the frequency of napping has consistently been reported to increase with advancing age (Ohayon & Vecchierini, 2002; Ohayon & Zulley, 1999). Additionally, the relationship between napping and cardiovascular risk is quite controversial, with epidemiological studies reporting that frequent napping is associated with both increased (Jung et al., 2013; Leng et al., 2014) and decreased (Campos & Siles, 2000) risk for coronary heart disease or cardiovascular mortality. Moreover, both positive (Blackwell et al., 2006; Cross et al., 2015) and negative (Campbell et al., 2005; Keage et al., 2012) associations have emerged between napping and increased risk of cognitive decline.

Given the lack of studies investigating HRV across daytime sleep in older populations and the pressing need for understanding the role of napping on physiological and psychological health, the current study aimed to assess cardiac autonomic activity across sleep stages during an afternoon nap in healthy young and older adults. First, we utilize a between-subject design to compare HRV profiles between a standard HRV QW condition and prenap rest condition. Next, we utilize a within-subject design to compare HRV profiles during prenap rest and sleep stages. We utilized a nap period of ~90 min that was strategically positioned in the mid-afternoon (1:30 p.m.) to promote adequate proportions of N2, N3, and REM sleep (Mednick et al., 2003, 2013). Our a priori hypotheses were that: (1) QW will show similar parasympathetic activity compared to prenap rest in both age groups; (2) young adults will show parasympathetic dominance during NREM sleep compared to prenap rest; (3) older adults will show no significant difference in parasympathetic modulation during NREM sleep compared to prenap rest; (4) older adults will show decreased parasympathetic modulation during NREM sleep and QW, compared to the younger subjects.

2 | METHOD

2.1 | Participants

60 (NAP) + 46 (QW) healthy young adults (18–35 yo, male = 60, *Mean* = 20.67, *SD* = 3.07) and 46 (NAP) + 38 (QW) older adults (60–85 yo, male = 42, *Mean* = 69.15, *SD* = 5.93) with no personal history of neurological, psychological, or other chronic illness provided informed consent, which was approved by the University of California, Riverside Human Research Review Board. Demographics and prior self-reported sleep habits are reported in Table 1. Participants included in the study had a regular sleep-wake schedule (reporting a habitual time in bed of about 7–9 hr for young adults and 6–8 hr for older adults per night; Hirshkowitz et al., 2015).

The personal health histories were measured twice. First, during a pre-screening online questionnaire a general health

TABLE 1 Descriptive statistics for demographics

| | Young adults (N = 106) | Older adults (N = 84) | Sig |
|----------------------------|---------------------------|--------------------------|------|
| Age (years) | 20.7 (5.7) | 69.1 (7.0) | *** |
| Male/female | 60/46 (56.6/43.4) | 42/42 (50/50) | n.s. |
| Ethnicity | | | *** |
| Asian | 51 (48.1) | 9 (10.7) | |
| African-American | 4 (3.8) | 9 (10.7) | |
| Caucasian | 7 (6.6) | 55 (65.5) | |
| Hispanic | 34 (32.1) | 10 (11.9) | |
| Other | 10 (9.4) | 1 (1.2) | |
| Health behavior/ status | | | |
| Caffeine/day | 1.1 (1.4) | 1.8 (1.8) | *** |
| Alcohol/week | 0.5 (3.1) | 2.01 (3.8) | *** |
| Nap/week | 2.2 (2.5) | 2.25 (3.0) | n.s. |
| Nap duration/day | 48.6 (54.2) | 38.8 (66.5) | n.s. |
| ESS | 7.4 (3.3) | 6.6 (3.1) | * |
| BMI (kg/m ²) | 24.2 (19.0) | 30.7 (22.8) | * |
| Bedtime | | | *** |
| 8:00–9:00 p.m. | 0 (0) | 5 (5.9) | |
| 9:00–10:15 p.m. | 7 (6.6) | 33(39.3) | |
| 10:15 p.m.–12:30 a.m. | 72 (67.9) | 44 (52.4) | |
| 12:30–1:45 a.m. | 27 (25.5) | 2 (2.4) | |
| Wake time | | | *** |
| 5:00–6:30 a.m. | 8 (7.5) | 20 (23.8) | |
| 6:30–7:45 a.m. | 12 (11.3) | 39 (46.4) | |
| 7:45–9:45 a.m. | 74 (69.8) | 23 (27.4) | |
| 9:45–11:00 a.m. | 12 (11.3) | 2 (2.4) | |

Note: Data are reported as Mean (standard deviation) for quantitative variables and *N* (%) for categorical variables; Asterisks indicate significant differences between age groups (n.s.- not significant; $p > .05$; * $p < .05$; *** $p < .001$).

Abbreviations: BMI, body mass index; ESS, Epworth Sleepiness Scale.

condition report was collected and the eligibility was determined. Second, eligible subjects were invited to participate in an orientation in which they were given details about the study and interviewed by a trained graduate student. Participants who met any of the following exclusion criteria were excluded from the study: (a) extreme morning or evening-type tendencies (measured with the Morningness-Eveningness Questionnaire; Horne & Östberg, 1976); (b) excessive daytime sleepiness (reported by Epworth Sleepiness Scale; Johns, 1991; subjects' rating > 13 were excluded); (c) a sleep disorder (assessed by questionnaires); (d) any personal or immediate family (i.e., first-degree relative) history of diagnosed significant psychopathology; (e) personal history of head injury with loss of consciousness greater than 2 min or seizures; (f) history of substance dependence; (g) current use of any psychotropic medications; (h) any cardiac,

respiratory or other medical condition which may affect cerebral metabolism; (i) noncorrectable vision and auditory impairments.

Participants who did not meet any of the exclusion criteria above and also met all the following inclusion criteria were enrolled in the study: (a) aged 18–39/60–85 years old; (b) healthy, nonsmoking adult without major medical problems; (c) completed at least 12 years of education; (d) a regular sleep-wake schedule, defined as obtaining 7–9 hr (young adults) or 6–8 hr (older adults) of sleep per night, with a habitual bedtime between 9 p.m. and 2 a.m. (young adults) or 8 p.m. and 1 a.m. (older adults) and a habitual wake time between 6 a.m. and 10 a.m. (young adults) or 5 a.m. and 9 a.m. (older adults). Enrolled participants were asked to maintain their schedule for one week prior to their visit, which was monitored with sleep diaries. In addition, participants were asked to wear an actigraph (Actiwatch Spectrum, Respironics) for one night prior to their visit. Subjects were rescheduled if they reported poor sleep quality in their sleep diary, such as having more than two nights of less than 6 hr of sleep or more than 9 hr of sleep during the week prior to their visit, or if subjects' actigraphy data showed less than 6 hr of sleep or more than 9 hr of sleep the night before the experimental visit. Rescheduled subjects were given another week to fill out a new sleep diary and maintain a regular sleep-wake schedule prior to their visit.

During the orientation, participants were screened for cognitive impairment using Digit Span Backwards, which contains a multivariate length string of digits; subjects were asked to repeat the string of digits backwards after it was read to them. In addition, Older participants were screened for dementia using the Telephone Screening for Dementia questionnaires (referred to as TELE) (Gatz et al., 2002), which consists of a variety of questions to identify dementia-like symptoms. For older subjects, the STOP-BANG questionnaire (Chung et al., 2008) was used to screen for obstructive sleep apnea and those with a medium to high risk (answering yes to three or more items) were excluded. Additionally, participants were instructed to abstain from caffeine and alcohol starting at noon the day prior to the study (detected on the sleep diary). Participants who consumed alcoholic beverages > 10 cans a week or caffeinated products > 3 cups a day were excluded prior to the study (reported in Table 1).

2.2 | Procedures

On the study day, subjects were randomly assigned to either a nap condition (NAP) or a quiet wake condition (QW). For the NAP group, subjects were provided a 2-hour nap opportunity and were allowed to sleep up to 90 min, monitored with polysomnography (PSG), including electroencephalography (EEG), electrocardiogram (ECG), electromyogram (EMG), and electrooculogram (EOG), in the Sleep and Cognition (SaC) lab at 1:30 p.m. (12:30–1:00 p.m. for older subjects because of an assumption that their circadian rhythm and sleep

schedule may be shifted forward; Monk, 2005). Before sleep, we recorded 5-min of resting HRV with subjects awake, in a supine position with head and body still, arms and legs uncrossed and eyes open. Subjects EEG was monitored by lab staff to ensure subjects did not close their eyes or fall asleep during the resting recording. In the QW conditions, subjects watched a 50-min nature documentary in a dark room lying on the bed during which they were monitored by lab staff to make sure they did not fall sleep. Participants received monetary compensation for participating in the study.

2.3 | Sleep recording and scoring

Electroencephalographic (EEG) data were acquired using a 32-channel cap (EASYCAP GmbH) with Ag/AgCl electrodes placed according to the international 10–20 System (Jasper, 1958). Electrodes included 24 scalp, two electrocardiography (ECG), two electromyography (EMG), two electrooculography (EOG), one ground, and one on-line common reference channel. The EEG was recorded with a 1,000 Hz sampling rate and was re-referenced to the contralateral mastoid (A1 & A2) postrecording. Only eight scalp electrodes (F3, F4, C3, C4, P3, P4, O1, O2), the EMG and EOG were used in the scoring of the nighttime sleep data. Each signal was amplified, band-pass filtered (EEG and EOG: 0.3–35 Hz), and digitized at 256 Hz. Next, data were preprocessed using BrainVision Analyzer 2.0 (BrainProducts, Munich Germany) and all epochs with artifacts and arousals (>10-s of arousals) were identified by visual inspection and rejected. EEG recordings were visually scored by two trained sleep technicians. Prior to scoring these data, technicians were required to reach 85% reliability with each other and one other rater in the lab on two independent data sets. Raw data were visually scored in 30-s epochs into Wake, Stage 1 Sleep (N1), Stage 2 Sleep (N2), Slow Wave Sleep (N3), and rapid eye movement sleep (REM) according to the American Academy of Sleep Medicine (AASM) rules for sleep staging using HUME, a custom MATLAB toolbox. Minutes in each sleep stage were calculated. Sleep onset latency (SOL) was calculated as the number of minutes from lights out until the initial epoch of sleep, N2, N3 and REM. Additionally, wake after sleep onset (WASO) was calculated as total minutes awake after the initial epoch of sleep and sleep efficiency (SE) was computed as total time spent asleep after lights out divided by the total time spent in bed x 100.

2.4 | Heart rate variability

Electrocardiogram (ECG) data were acquired at a 1,000-Hz sampling rate using a modified Lead II Einthoven configuration. We analyzed HRV of the R-waves series across the whole sleep/wake period using Kubios HRV Analysis

Software 2.2 (Biosignal Analysis and Medical Imaging Group, University of Kuopio, Finland), according to the Task Force guidelines (Electrophysiology Task Force of the European Society of Cardiology the North American Society of Pacing, 1996). RR peaks were automatically detected by the Kubios software and visually examined by trained technicians. Incorrectly detected R-peaks were manually edited. Missing beats were corrected via cubic spline interpolation. Inter-beat intervals were computed, and a third-order polynomial filter was applied on the time series in order to remove trend components. Artifacts were removed using the automatic medium filter provided by the Kubios software.

The HRV analysis of the RR series was performed by a MATLAB-based algorithm (see Whitehurst et al., 2018). An autoregressive model (Model order set at 16; Boardman et al., 2002) was employed to calculate the absolute spectral power (ms^2) in the LF HRV (0.04–0.15 Hz; ms^2) and the HF HRV (0.15–0.40 Hz; ms^2 ; an index of vagal tone) frequency bands, as well as total power (TP; ms^2 ; reflecting total HRV), and HF peak frequency (HF_{pf} ; Hz; reflecting respiratory rate). From these variables, we derived the HF normalized units ($\text{HF}_{\text{nu}} = \text{HF}[\text{ms}^2]/\text{HF}[\text{ms}^2] + \text{LF}[\text{ms}^2]$) and the LF/HF ratio ($\text{LF}[\text{ms}^2]/\text{HF}[\text{ms}^2]$), an index often considered to reflect the sympathovagal balance (i.e., the balance between the two branches of the ANS), but whose meaning has been recently put into question (Billman, 2013; Reyes del Paso et al., 2013). The LF, HF, and TP measures had skewed distributions and as such were transformed by taking the natural logarithm, as suggested by Laborde et al., 2017. Since the LF normalized units are mathematically reciprocal to HF_{nu} (i.e., $\text{LF}_{\text{nu}} = 1 - \text{HF}_{\text{nu}}$), to avoid redundancy, we computed only the HF_{nu} index, an index often thought to reflect vagal modulation (Burr, 2007). Due to controversies about the physiological mechanisms that contribute to changes in LF activity, LF, LF/HF ratio, and HF_{nu} are difficult to make for these parameters, but we report them for descriptive purposes.

In addition to the frequency domain parameters, RMSSD (ms; root mean square of successive differences) was calculated as a measure of vagally mediated HRV in the time-domain. Similar to the frequency adjustments, to adjust for skewed distributions in the RMSSD, we report the natural logarithm. Additionally, we included the RR (ms; time interval between consecutive R-peaks, reflecting the frequency of myocardial contraction) as an index of cardiac autonomic control in our analyses (Pinna et al., 2007).

For time-domain and frequency-domain HRV measures during different sleep stages, consecutive artifact-free 3-min windows of undisturbed sleep were selected across the whole nap using the following rules: (a) the 1.5-min preceding and the 1.5-min succeeding, and (b) the entire 3-min epoch selected must be free from stage transitions, arousal, or movements. Windows were identified and averaged within N2 sleep, slow-wave sleep (N3), REM sleep, and

wake-after-sleep-onset (WASO). We also analyzed 5 min of prenap wakefulness (Rest). Epochs of N1 were not analyzed as this transitional sleep stage usually lasts less than five minutes, and in our sample, only three young subjects and no older subjects had consecutive 5-min windows of artifact-free N1 sleep. Three-min windows were chosen given that naps have more fragmented sleep due to increased stage transitions, especially in the elderly subjects. In fact, even 3 min of undisturbed sleep in each sleep stage is not as common in daytime naps in the elderly population. Consecutive undisturbed 5-min windows used by previous nocturnal sleep studies (Ako et al., 2003; Brandenberger et al., 2003; de Zambotti et al., 2014) would be implausible for analyzing HRV during naps. In addition, we analyzed artifact-free 3-min windows of 50 min QW during which the subjects watched a 50-min nature documentary in a dark room lying on the bed.

2.5 | Data reduction

As mentioned in the above section, not everyone experienced all sleep stages with at least a stable 3-min epoch. Therefore, in the NAP group, we included 60 young and 46 older adults in analyses for Rest, 53 young and 37 older adults in analyses for N2, 42 young and 20 older adults in analyses for N3, 21 young and 6 older adults in analyses for REM sleep, as well as 43 young and 31 older adults in analyses for WASO. As we only have six older adults who had at least 3-min of stable REM sleep, REM data in the elderly were excluded from the analyses. In fact, among all of our older subjects in the nap group ($N = 46$), only seven of them ever reached REM sleep,

TABLE 2 Descriptive statistics for nap

| | Young adults | <i>N</i> | Older adults | <i>N</i> | Sig |
|------------|--------------|----------|--------------|----------|------|
| TIB (min) | 78.07 (3.1) | | 80.76 (3.36) | | n.s. |
| TST (min) | 61.50 (2.94) | | 46.99 (3.92) | | ** |
| SOL (min) | 7.66 (0.99) | | 9.12 (1.27) | | n.s. |
| N1 (min) | 4.59 (0.47) | 43 | 7.93 (1.07) | 45 | ** |
| N2 (min) | 31.45 (1.94) | 59 | 28.86 (2.86) | 45 | n.s. |
| N3 (min) | 19.22 (1.96) | 53 | 7.47 (1.58) | 21 | *** |
| REM (min) | 6.24 (1.09) | 29 | 2.72 (0.98) | 7 | n.s. |
| WASO (min) | 6.56 (0.88) | 48 | 19.01 (2.12) | 46 | *** |
| SE (%) | 77.59 (2.21) | | 56.52 (3.47) | | *** |

Note: Data are reported as Mean (standard error); # indicated the number of subjects reached each sleep stage. All stats are represented in minutes besides SE which is in percentage. Asterisks indicate significant differences between age groups (n.s.- not significant: $p > .05$; ** $p < .01$; *** $p < .001$).

Abbreviations: N3, slow wave sleep; REM, rapid eye movement sleep; SE, sleep efficiency (calculated as $100 \times \text{TST}/\text{TIB}$); SOL, sleep latency (calculated as the time to first epoch of sleep); TIB, total time in bed; TST, total sleep time; WASO, wake after sleep onset (calculated as the minutes of wake after first epoch of sleep).

with six/ seven having artifact-free 3-min epochs. We have listed the number of subjects that reached each sleep stage in Tables 2 and 5.

In the QW group, we included 46 young and 38 older adults in the analyses. Subjects with data points greater or less than mean ± 3 *standard deviation were considered as outliers and were excluded from the analyses. We excluded one older subject in the NAP group due to this criterion. Descriptive statistics for HRV variables are shown in Tables 3 and 4 for the NAP and QW groups, respectively.

2.6 | Power spectral analysis

The EEG power spectrum was computed using the Welch method (4 s Hanning windows with 50% overlap) (Campbell et al., 2005). Delta (0.5–3.99 Hz), theta (4–7.99 Hz), alpha (8–13 Hz), slow sigma (9–11 Hz), fast sigma (12–15 Hz), beta (15–30 Hz), and total power (0.5–30 Hz) were calculated for each sleep stage (i.e., WASO, Stage 2, SWS and REM). Power spectrum was averaged across the eight scalp electrodes (F3, F4, C3, C4, P3, P4, O1, O2). Summary statistics for the EEG power ratio (% power of each frequency band of interest/ total power) are shown in Table 5 for the NAP subjects.

2.7 | Statistical analyses

All statistical analyses were performed in R 3.6.2, using the libraries lme4 (Bates et al., 2015), and lsmeans (Lenth, 2016).

First, to compare the between-subject difference between prenap rest to QW, we used a two-way ANOVA using Stage (prenap rest, QW) and Age (Young, Older) as between-subject factors for each HRV variable. We first assessed a reduced (nested) model, with Stage (prenap rest, QW) as the only factor. We then included Age (Young, Older) in the full model. By comparing the reduced and full model using the Likelihood Ratio Test (Lewis et al., 2011), we are able to interpret if adding the factor Age significantly improved the model.

Next, in order to investigate within-subject profiles of cardiac activity across sleep stages, we used linear mixed effect models (LME), which do not depend on limited assumptions about variance-covariance matrix assumptions (sphericity). Additionally, LME models eliminate the need for averaging epochs across sleep stages and allow the inclusion of an unbalanced number of observations per subject in the analyses. Moreover, LME models take into account the influence of factors whose levels are extracted randomly from a population (i.e., participants), thus yielding more generalizable results (Baayen et al., 2008). In order to examine the autonomic profile changes across sleep stages in the young adults and older adults separately, we built a model using Participant as crossed

TABLE 3 Summary of HRV parameters across sleep stages

| Stage | Rest | | | WASO | | | N2 | | | N3 | | | REM | | |
|--------------------------|---------------|---------------|---------------|------|---------------|---------------|------|---------------|---------------|------|---------------|---------------|------|---------------|--|
| | Age Group (N) | Young (60) | Older (46) | Sig | Young (43) | Older (31) | Sig | Young (53) | Older (37) | Sig | Young (42) | Older (20) | Sig | Young (21) | |
| Epochs | | 1.47 (0.366) | 1.91 (0.475) | n.s. | 3.49 (0.454) | 5.41 (0.592) | * | 6.11 (0.389) | 4.97 (0.524) | n.s. | 5.98 (0.437) | 3.75 (0.713) | * | 3.24 (0.618) | |
| RR (ms) | | 945 (19.2) | 943 (21.5) | n.s. | 918 (20.2) | 901 (22.6) | n.s. | 987 (19.5) | 930 (22.0) | † | 984 (20.0) | 928 (23.8) | † | 905 (22.4) | |
| RMSSD (ln) | | 4.22 (0.081) | 4.11 (0.118) | n.s. | 4.20 (0.086) | 3.93 (0.131) | n.s. | 4.28 (0.082) | 3.85 (0.124) | ** | 4.19 (0.085) | 3.70 (0.146) | ** | 4.17 (0.099) | |
| HF (ln ms ²) | | 6.73 (0.151) | 6.30 (0.225) | n.s. | 6.74 (0.163) | 5.99 (0.253) | * | 6.93 (0.154) | 5.85 (0.237) | *** | 6.73 (0.189) | 5.70 (0.283) | ** | 6.73 (0.151) | |
| LF (ln ms ²) | | 6.62 (0.132) | 6.22 (0.206) | n.s. | 6.77 (0.155) | 5.99 (0.242) | * | 6.51 (0.139) | 5.76 (0.222) | * | 5.69 (0.151) | 5.16 (0.281) | n.s. | 6.71 (0.200) | |
| TP (ln ms ²) | | 7.97 (0.128) | 7.72 (0.187) | n.s. | 8.20 (0.146) | 7.46 (0.216) | * | 7.83 (0.133) | 7.06 (0.200) | ** | 7.33 (0.143) | 6.67 (0.248) | * | 8.08 (0.181) | |
| LF/HF | | 1.15 (0.104) | 1.42 (0.150) | n.s. | 1.41 (0.126) | 1.29 (0.179) | n.s. | 0.922 (0.110) | 1.39 (0.163) | * | 0.488 (0.122) | 0.924 (0.210) | n.s. | 1.20 (0.167) | |
| HF _{nu} | | 0.525 (0.021) | 0.513 (0.026) | n.s. | 0.491 (0.025) | 0.505 (0.031) | n.s. | 0.592 (0.022) | 0.509 (0.028) | * | 0.716 (0.024) | 0.609 (0.036) | * | 0.483 (0.031) | |
| HF _{pf} | | 0.273 (0.006) | 0.270 (0.007) | n.s. | 0.265 (0.007) | 0.262 (0.008) | n.s. | 0.255 (0.006) | 0.246 (0.008) | n.s. | 0.261 (0.007) | 0.230 (0.010) | ** | 0.270 (0.008) | |

Note: Data are reported as Mean (standard error). Epochs indicated the average number of 3-min windows being analyzed in each sleep stage. Asterisks indicate significant differences between age groups corrected by Tukey's method. (n.s.- no significant; $p > .08$; $†p < .08$; $*p < .05$; $**p < .01$; $***p < .001$).

TABLE 4 Summary of HRV parameters during QW

| Stage | QW | | | |
|--------------------------|---------------|---------------|---------------|------|
| | Age group (N) | Young (46) | Older (38) | Sig |
| Epochs | | 14.5 (0.329) | 15.1 (0.362) | n.s. |
| RR (ms) | | 914 (21.3) | 906 (23.4) | n.s. |
| RMSSD (ln) | | 4.09 (0.119) | 3.93 (0.131) | n.s. |
| HF (ln ms ²) | | 6.43 (0.217) | 6.01 (0.239) | n.s. |
| LF (ln ms ²) | | 6.72 (0.197) | 6.21 (0.217) | n.s. |
| TP (ln ms ²) | | 8.19 (0.188) | 7.80 (0.206) | n.s. |
| LF/HF | | 1.52 (0.192) | 1.92 (0.211) | n.s. |
| HF _{nu} | | 0.443 (0.025) | 0.455 (0.028) | n.s. |
| HF _{pf} | | 0.291 (0.008) | 0.258 (0.008) | n.s. |

Note: Data are reported as Mean (standard error). Epochs indicated the average number of 3-min windows being analyzed in each sleep stage. Asterisks indicate significant differences between age groups corrected by Tukey's method. (n.s.- no significant; $p > .08$; $†p < .08$; $*p < .05$; $**p < .01$; $***p < .001$).

random effects and Stage as a fixed effect (Young adult model: prenap-resting, N2, N3, REM, WASO; Older adults model: prenap-resting, N2, N3, WASO) for each HRV variable. Next, to examine the age-related changes in ANS profiles, we built an LME model using Participant as crossed random effects and Stage (prenap-resting, N2, N3, WASO) and Age (Young, Older) as fixed effects. We first built a reduced (nested) model, with Stage (prenap-resting, N2, N3, WASO) as the only fixed effect, and then included Age (Young, Older) as a fixed effect in the full model. Like for the wake analyses, comparing the reduced and full model using the Likelihood Ratio Test (Lewis et al., 2011), we are able to interpret if adding the factor Age significantly improved the model. Tukey's correction for multiple testing was used for post hoc comparisons.

To examine the differences in demographics, sleep architecture, and power spectrum between the two age groups, an independent-sample *t*-test (for continuous variables) and chi-squared independent test (for categorical variables) was performed for each variable and the results are shown in Tables 1, 2, and 5, respectively. Pearson correlation coefficients were used to examine the bivariate relationship between HRV variables of interests and sleep parameters.

3 | RESULTS

3.1 | Demographic, sleep architecture, and power spectrum data

As reported in Table 1, there were significant differences between young versus older adults in Age, Ethnicity, caffeine, and alcohol intake, ESS, BMI, and habitual bedtime/waketime, while no differences in nap frequency or duration. Older adults reported an earlier bedtime and wake time,

TABLE 5 Summary of EEG power ratio across sleep stages for the nap group

| Stage | WASO | | | N2 | | | N3 | | | REM | | |
|-----------------------|----------------|----------------|------|----------------|----------------|-----|----------------|----------------|------|----------------|----------------|------|
| | Young (48) | Older (46) | Sig | Young (59) | Older (45) | Sig | Young (53) | Older (21) | Sig | Young (29) | Older (7) | Sig |
| Delta (0.5–3.99 Hz) | 0.736 (0.0201) | 0.593 (0.0205) | *** | 0.743 (0.0136) | 0.670 (0.0144) | *** | 0.845 (0.0072) | 0.815 (0.0099) | ** | 0.667 (0.0178) | 0.625 (0.0273) | n.s. |
| Theta (4–7.99 Hz) | 0.104 (0.0103) | 0.144 (0.0105) | ** | 0.079 (0.0072) | 0.102 (0.0076) | * | 0.043 (0.0034) | 0.048 (0.0046) | n.s. | 0.110 (0.0095) | 0.102 (0.0146) | n.s. |
| Alpha (8–13 Hz) | 0.063 (0.0079) | 0.138 (0.0081) | *** | 0.134 (0.0058) | 0.161 (0.0062) | ** | 0.091 (0.0043) | 0.111 (0.0059) | ** | 0.167 (0.0111) | 0.189 (0.0170) | n.s. |
| Slow sigma (9–11 Hz) | 0.063 (0.0062) | 0.073 (0.0063) | n.s. | 0.039 (0.0040) | 0.050 (0.0042) | † | 0.020 (0.0021) | 0.024 (0.0029) | n.s. | 0.059 (0.0054) | 0.049 (0.0084) | n.s. |
| Fast sigma (12–15 Hz) | 0.030 (0.0026) | 0.042 (0.0027) | ** | 0.032 (0.0021) | 0.039 (0.0022) | * | 0.018 (0.0012) | 0.018 (0.0017) | n.s. | 0.029 (0.0023) | 0.037 (0.0035) | n.s. |
| Beta (15–30 Hz) | 0.082 (0.0085) | 0.104 (0.0086) | † | 0.026 (0.0033) | 0.046 (0.0035) | *** | 0.009 (0.0013) | 0.017 (0.0018) | *** | 0.042 (0.0048) | 0.065 (0.0074) | n.s. |

Notes: Data are reported as Mean (standard error). Asterisks indicate significant differences between age groups (n.s. = no significant; $p > .08$; $† p < .08$; $* p < .05$; $** p < .01$; $*** p < .001$).

higher caffeine and alcohol intake, and BMI, as well as lower daytime sleepiness, compared to the young adults.

Furthermore, older adults demonstrated poorer sleep quality during the nap, with significantly less total sleep time and N3 sleep duration. Older adults also presented lower sleep efficiency, more time in N1 sleep, and more wake after sleep onset (WASO) than the younger adults (see Table 2).

In addition, older adults showed lower SWA power ratio during WASO and NREM sleep, compared to the younger adults (see Table 5 for other frequency bands).

3.2 | Comparing cardiac profiles during QW and prenap rest: Young versus older adults

Means and standard errors for the HRV variables during QW are provided in Table 4.

We examined the autonomic profile between a QW episode and prenap rest for older and younger adults. For RR, we report no significant main effect of Stage ($F_{(1,185)} = 2.8112$, $p = .0953$), Age ($F_{(1,185)} = 0.0114$, $p = .9151$), or interaction ($F_{(1,185)} = 0.0428$, $p = .8364$). The likelihood ratio test was not significant ($LR = 0.0271$; $p = .9733$), suggesting that adding the factor Age did not significantly improve the model.

For the time-domain measure, $RMSSD_{in}$ showed no significant Age effect ($F_{(1,185)} = 1.2418$, $p = .2666$), Stage effect ($F_{(1,185)} = 2.1883$, $p = .1408$), or interaction effect ($F_{(1,185)} = 0.0670$, $p = .7961$). The likelihood ratio test was not significant ($LR = 0.6544$; $p = .5210$), suggesting that adding the factor Age did not significantly improve the model. Again, we did not detect age differences in this variable between QW and prenap rest.

For frequency-domain variables, our analysis revealed no significant main effect of Stage ($F_{(1,185)} = 0.4507$, $p = .5028$), Age ($F_{(1,185)} = 2.5930$, $p = .1090$), or interaction ($F_{(1,185)} = 0.1611$, $p = .6886$) for TP_{in} . Similarly, no significant main effect of Stage ($F_{(1,185)} = 2.4654$, $p = .1181$), Age ($F_{(1,185)} = 3.6948$, $p = .0561$), or interaction ($F_{(1,185)} = 0.0003$, $p = .9857$) were found for HF_{in} . Again, for LF_{in} , no significant main effect of Stage ($F_{(1,185)} = 0.0135$, $p = .9078$), Age ($F_{(1,185)} = 3.7253$, $p = .0551$), or interaction ($F_{(1,185)} = 0.0051$, $p = .9434$) were found. None of the likelihood ratio tests were significant (TP_{in} : $LR = 1.3771$; $p = .2549$; HF_{in} : $LR = 1.8476$; $p = .1605$; LF_{in} : $LR = 1.8652$; $p = .1578$), suggesting that adding the factor Age did not improve these models. These results suggested that young and older subjects show similar autonomic profiles in a standard waking HRV condition and a prenap rest condition. However, for LF/HF ratio, our analysis revealed a Stage effect ($F_{(1,185)} = 5.2704$, $p = .0228$), with QW showing a higher ratio than prenap resting. No significant

Age effect ($F_{(1,185)} = 3.0999, p = .0800$) or interaction effect were found ($F_{(1,185)} = 0.1010, p = .7510$). Similar patterns were shown in HF_{nu} , with a Stage effect ($F_{(1,185)} = 8.1255, p = .0049$) where subjects showed higher HF_{nu} during prenap resting compared to QW. No significant Age effect ($F_{(1,185)} = 0.0027, p = .9588$) or interaction effect were found ($F_{(1,185)} = 0.2267, p = .6346$). Again, the likelihood ratio test was not significant for either of these dependent measures (LF/HF ratio: $LR = 1.6005; p = .2046$; HF_{nu} : $LR = 0.1147; p = .8917$), suggesting that adding the factor Age did not improved these models. This suggests that the relative proportion of vagally mediated HF activity is slightly higher directly before a nap compared to a QW period for both older and younger adults.

In summary, by comparing the models, we found that adding the factor of Age did not improve the models of any wake HRV variables, suggesting no evidence of age-related changes in ANS activity during wake using both the standard QW condition and prenap rest.

3.3 | Cardiac autonomic profiles during a nap in young adults

Next, we compared prenap rest, sleep stages (N2, N3, REM) and wake after sleep onset (WASO) in younger subjects. Means and standard errors for the HRV variables across sleep stages are provided in Table 3.

For RR, we report a significant effect for Stage ($F_{(4,150)} = 13.9887, p < .0001$; Figure 1a), with Tukey's post hoc revealing a significant lengthening of RR intervals during

N2 and N3 relative to Rest (N2: $p = .0015$; N3: $p = .0096$), WASO (all $ps < .0001$), and REM sleep (all $ps < .0001$), but no differences between N2 and N3 ($p = .9995$), nor between REM and Rest ($p = .0851$) or WASO ($p = .9397$). First, for TP_{in} we showed a significant Stage effect ($F_{(4,150)} = 9.773, p < .0001$; Figure 1e), with Tukey's post hoc showing lower power during N3 relative to Rest ($p < .0001$), WASO ($p < .0001$), REM sleep ($p = .0006$), and N2 sleep ($p = .0036$). This was primarily due to reductions in LF power ($F_{(4,150)} = 12.320, p < .0001$; Figure 1d), with lower LF power emerging during N3 relative to Rest ($p < .0001$), WASO ($p < .0001$), N2 ($p < .0001$), and REM sleep ($p < .0001$), but no shifts in HF_{in} ($F_{(4,150)} = 1.1838, p = .3203$; Figure 1c) across sleep stages. These patterns were also clear when examining both the LF/HF ratio ($F_{(4,150)} = 10.0353, p < .0001$; Figure 1f) and HF_{nu} ($F_{(4,150)} = 23.1608, p < .0001$; Figure 1g), with Tukey's post hoc tests revealing significantly lower LF/HF ratio during N3 relative to Rest ($p = .0010$), WASO ($p < .0001$), REM sleep ($p = .0021$), and N2 sleep ($p = .0243$) and significantly greater HF_{nu} during N3 relative to Rest, WASO, REM, and N2 sleep (all $ps < .0001$). HF_{nu} was also greater during N2 relative to Rest, WASO, and REM ($p = .0020$). For the time-domain variable, no differences were found in RMSSD ($F_{(4,150)} = 0.968, p = .4272$; Figure 1b) across stages. Taken together, these results confirm previous studies demonstrating that among younger adults, as the brain shifts from wake to deeper stages of NREM sleep, the body undergoes marked changes with heart rate deceleration and a transition to parasympathetic dominance in ANS activity.

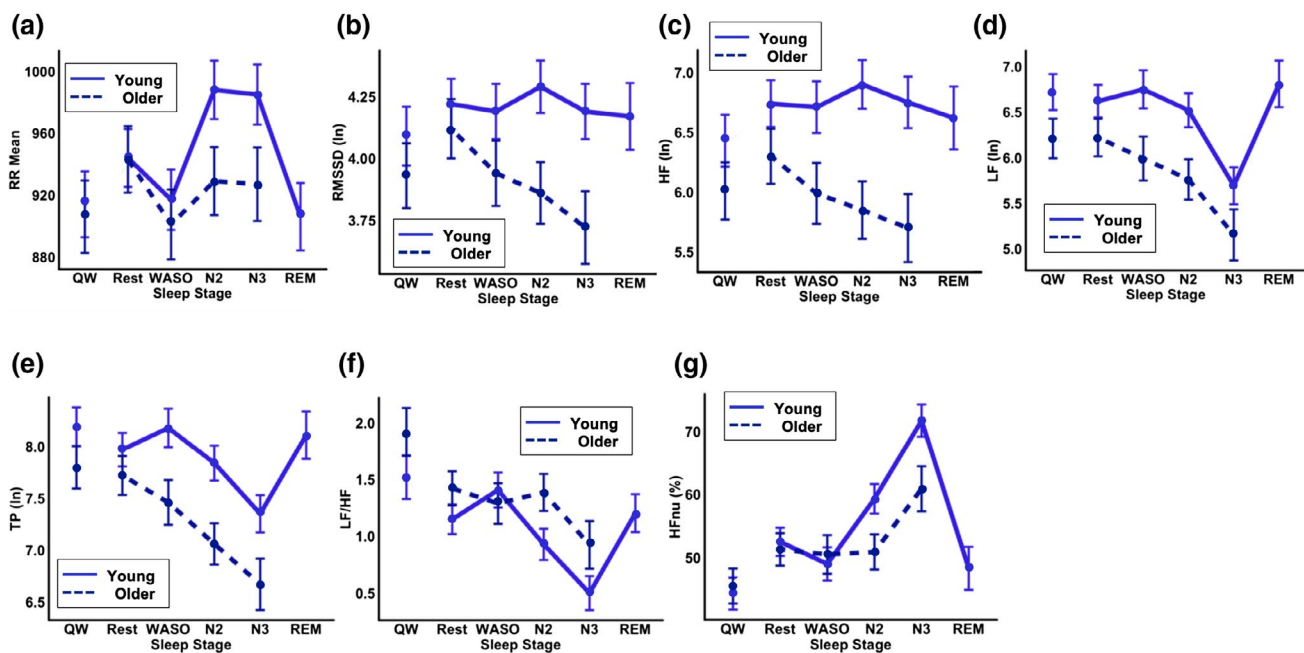


FIGURE 1 (a–g) Heart rate variability (HRV) components across sleep stages in younger (solid blue line) and older (dashed darkened blue line) adults in the NAP group. (a) Mean of RR intervals (ms); (b) RMSSD (ln); (c) HF HRV (ln); (d) LF HRV (ln); (e) Total Power (f) LF/HF Ratio (g) HF_{nu} . Error bars represent standard error of the mean. Note that the QW and Rest analysis is a between subjects' comparison

3.4 | Cardiac autonomic profiles during a nap in older adults

Next, we compared prenap rest, sleep stages (N2, N3, REM) and wake after sleep onset (WASO) in older subjects. For older adults, RR showed a significant effect for Stage ($F_{(3, 82)} = 7.5560, p < .0001$; Figure 1a), with Tukey's post hoc showing a significant reduction of RR intervals during WASO relative to Rest ($p = .0025$). But, no differences emerged across the sleep stages. For frequency domain indicators, we showed a significant TP_{ln} Stage effect ($F_{(3, 82)} = 4.8486, p = .0037$; Figure 1e) with significantly lower power during N3 ($p = .0050$) and N2 ($p = .0364$) relative to Rest. Similar to the younger cohort, this was primarily due to reductions in LF power (LF_{ln}; $F_{(3, 82)} = 2.8704, p = .0413$; Figure 1d), with significantly lower LF power during N3 relative to Rest ($p = .0260$), but no shifts in HF_{ln} ($F_{(3, 82)} = 1.4464, p = .2353$; Figure 1c) across sleep stages. Unlike the youngers, sleep modulations were not shown in the LF/HF ratio Stage effect ($F_{(3, 82)} = 1.3850, p = .2532$; Figure 1f) or HF_{nu} ($F_{(3, 82)} = 2.5453, p = .0617$; Figure 1g). Additionally, for the time-domain variable, no significant differences were found for RMSSD_{ln} ($F_{(3, 82)} = 2.2311, p = .0907$; Figure 1b) across stages.

Overall, these results implicate a similar pattern in ANS total and LF power across a nap for older and younger adults, whereas we found no evident sleep modulations in HF_{nu} and LF/HF ratio among our older subjects.

3.5 | Comparing cardiac profiles during nap: Young versus older adults

We utilized linear mixed-model analysis to directly compare profiles across older and younger adults. For RR intervals (Figure 1a), a Stage effect ($F_{(3, 212)} = 14.901, p < .0001$), and an Age x Stage interaction emerged ($F_{(3, 212)} = 5.477, p = .0012$). Young adults demonstrated a significant lengthening in RR during N2 and N3 relative to Rest (N2: $p = .0001$; N3: $p = .0015$) and WASO (all $ps < .0001$). For older adults, no sleep-dependent shifts were present (all $ps > .1275$), however, we found reduced RR during WASO compared Rest ($p = .0062$). The likelihood ratio test was significant ($LR = 17.3995; p = .0016$), suggesting that adding the factor Age significantly improved the model.

For frequency-domain variables, we observed main effects of Age for TP_{ln} ($F_{(1, 105)} = 7.215, p = .0084$; Figure 1e), with the older adults displaying significantly lower total power overall. Furthermore, a main effect of Stage was found for TP_{ln} ($F_{(3, 212)} = 12.302, p < .0001$; Figure 1e), with significantly lower total power during N3, compared to Rest ($p < .0001$), WASO ($p < .0001$), and N2 ($p = .0205$), as well as significantly lower total power during N2, compared to Rest

($p = .0083$) and WASO ($p = .0468$). No significant main effect of Stage was found ($F_{(3, 212)} = 1.6810, p = .1720$). No significant Age x Stage interaction was found ($F_{(3, 212)} = 1.808, p = .1467$) for TP_{ln}. The likelihood ratio test was significant ($LR = 12.5808; p = .0135$), suggesting that adding the factor Age improved the model.

These shifts in total power were complemented by a significant Age effect for HF_{ln} ($F_{(1, 105)} = 8.3446, p = .0047$; Figure 1c) and LF_{ln} ($F_{(1, 105)} = 7.329, p = .0079$; Figure 1d), with the older adults showing significantly lower HF and LF power, compared to the younger cohort. In addition, for LF_{ln}, a main effect of Stage was found ($F_{(3, 212)} = 12.283, p < .0001$), with significantly lower LF power during N3, compared to Rest ($p < .0001$), WASO ($p < .0001$), and N2 ($p = .0006$). No significant main effect of Stage was found for HF_{ln} ($F_{(3, 212)} = 0.7454, p = .5261$). No significant Age x Stage interaction was found for HF_{ln} ($F_{(3, 212)} = 2.3701, p = .0716$) or LF_{ln} ($F_{(3, 212)} = 0.654, p = .5815$). However, the likelihood ratio test was significant for HF_{ln} ($LR = 15.2829; p = .0041$) but not for LF_{ln} ($LR = 9.2153; p = .0559$), suggesting that adding the factor Age significantly improved the explained variation in HF_{ln} but not LF_{ln}.

The LF/HF ratio showed a Stage effect ($F_{(3, 212)} = 9.6908, p < .0001$; Figure 1f), with significantly lower LF/HF ratio during N3, compared to Rest ($p = .0002$), WASO ($p = .0003$), and N2 ($p = .0086$). No significant Age effect was shown ($F_{(1, 105)} = 2.9395, p = .0894$). No significant Age x Stage interaction was found ($F_{(3, 212)} = 1.7531, p = .1572$) for LF/HF ratio. In addition, the likelihood ratio test was not significant ($LR = 8.2874; p = .0816$), suggesting that adding the factor Age did not improve the model.

For HF_{nu}, a significant effect of Stage ($F_{(3, 212)} = 23.4128, p < .0001$; Figure 1g), with significantly greater HF_{nu} during N3, compared to Rest, WASO, and N2 (all $ps < .0001$). No significant Age effect was shown ($F_{(1, 105)} = 2.3738, p = .1264$). Here, an Age x Stage interaction was apparent ($F_{(3, 212)} = 3.0343, p = .0302$), with young adults expressing significantly greater HF_{nu} during N2 ($p = .0216$) and N3 ($p = .0158$) but not the rest of stages, compared to older adults. The likelihood ratio test was significant ($LR = 11.5583; p = .021$), suggesting that adding the factor Age improved the model.

For the time-domain measure RMSSD, we also observed an Age effect ($F_{(1, 105)} = 4.330, p = .0399$; Figure 1b), with older adults showing lower HRV than the youngers overall. Furthermore, an Age x Stage interaction for RMSSD_{ln} were found ($F_{(3, 212)} = 2.872, p = .0373$; Figure 1c), with older adults showing significantly lower vagally mediated HRV during N2 sleep ($p = .0083$) and N3 ($p = .0084$), compared to the younger cohort. The likelihood ratio test was significant ($LR = 12.9717; p = .0114$), suggesting that adding the factor Age significantly improved the model.

In summary, by comparing the LME models, the current study showed that adding the factor of Age improved

the models of RR intervals, $RMSSD_{in}$, HF_{in} , TP_{in} , HF_{nu} . In particular, older adults demonstrated overall decreases in TP_{in} , HF_{in} , LF_{in} , compared to the youngers. The Age \times Stage interactions were found in HF_{nu} and $RMSSD_{in}$, with young adults expressing significantly greater vagal activity during NREM sleep, but not during WASO or prenap rest, compared to the older cohort. Taken together, these findings suggest an age-related decline with significantly less parasympathetic dominance during a daytime nap in older adults, compared with youngers.

3.6 | Relationship between HRV variables and sleep parameters

Next, given the parallel declines in parasympathetic activity, sleep architecture, and SWA ratio, we further investigate if the age-related differences in HRV variables might be driven by SWA ratio or sleep architecture (TST, SOL, WASO, SE, Minutes in each sleep stage). We examined the correlation between parasympathetic activity ($RMSSD_{in}$, HF_{in} , HF_{nu}) and those sleep parameters. We found no significant correlation between HRV variables and SWA during N2 (Young: all $ps > .6972$; Older: all $ps > .7329$), N3 (Young: all $ps > .0843$; Older: all $ps > .2326$), or WASO (Young: all $ps > .1643$; Older: all $ps > .0843$). Furthermore, no significant correlation between HRV variables and sleep architecture: total sleep time (Young: all $ps > .2826$; Older: all $ps > .1352$), sleep efficiency (Young: all $ps > .4732$; Older: all $ps > .3271$), N1 sleep duration (Young: all $ps > .1203$; Older: all $ps > .3271$), N2 sleep duration (Young: all $ps > .1175$; Older: all $ps > .3740$), N3 sleep duration (Young: all $ps > .1105$; Older: all $ps > .0793$), WASO (Young: all $ps > .0697$; Older: all $ps > .1892$). Taken together, these results suggested that the dampened parasympathetic activity during NREM sleep are neither associated nor explained simply by differences in sleep architecture or reductions in EEG activity during the nap.

4 | DISCUSSION

Heart rate variability reflects an individual's ability to adapt to moment-to-moment changes in the environment (Thayer & Lane, 2009). In the current study, we aimed to assess the cardiac autonomic activity during a daytime nap in healthy young and older adults. There is compelling evidence for a strong link between the decline in cardiac autonomic activity during wake and both cognitive and health outcomes, as well as links between reduced HRV and age-related decreases in physiological functioning. However, the modulation of cardiac ANS activity in this population specifically during a daytime nap, compared with quiet wake, is

under-investigated. Here, in agreement with our hypotheses, our young subjects showed parasympathetic dominance during NREM sleep compared to prenap resting. In addition, the current study showed that older adults exhibited a reduced autonomic variability, or cardiac autonomic rigidity, during NREM sleep, compared to the younger cohort. Last, no age-related modulations were evident during wake, suggesting a sleep-specific reduction in parasympathetic activity in older adults.

4.1 | A nap is a mini-cardiovascular break in young adults

In the current work, the cardiac autonomic pattern across daytime sleep in young adults was consistent with the prior literature. Indeed, similar to our results, lengthening of RR intervals has been observed during N2 and N3 compared to Rest, WASO, and REM sleep in studies examining nocturnal sleep (de Zambotti et al., 2014; Trinder et al., 2001), as well as a daytime nap (Cellini et al., 2016) among healthy young adults. Regarding parasympathetic/vagal activity specifically, it is been previously reported that vagal activity rises at sleep onset and remains elevated across the whole sleep period, with higher vagal modulation during N2 and N3 than REM sleep and waking (Nocturnal Sleep: Ako et al., 2003; de Zambotti et al., 2014; Trinder et al., 2001; Nap: Cellini et al., 2016), suggesting vagal dominance during NREM sleep stages. Similar to previous findings, we found that HF_{nu} was significantly increased during N3 compared to Rest, WASO, N2, and REM, and during N2 compared to Rest, WASO, and REM. These studies suggested that, similar to nighttime sleep, a daytime nap demonstrates the dominance of vagally mediated activity during NREM sleep, in particular during N3.

Indeed, this autonomic shift was also reflected in the LF/HF ratio, which was also at its lowest during N3. A similar pattern was reported, with LF/HF ratio reduced in N3 compared to N2, presleep wakefulness, and REM sleep (Nocturnal Sleep: Ako et al., 2003; Nap: Cellini et al., 2016). We also observed a strong decrease in TP during N3 mainly due to the significant decrease in LF_{in} power during this sleep stage (HF_{in} was not significantly reduced in N3), similar to previous studies examining nocturnal sleep (de Zambotti et al., 2014) and nap (Cellini et al., 2016). These data suggest discrete fluctuations in LF_{in} power and overall dominance of vagal activity during N3 sleep in a daytime nap, which mirror nighttime sleep HRV profiles (Whitehurst et al., 2018). Note that, since the mechanism underlying LF_{in} is still debated (Billman, 2013; Reyes del Paso et al., 2013), strong inferences about the physiological mechanisms that contribute to changes in LF and LF/HF ratio are difficult to make for these parameters, but we report them for descriptive purposes.

Taken together, these findings are consistent with previous reports on the cardiac autonomic profile during nocturnal sleep and daytime nap in young adults (Ako et al., 2003; Cellini et al., 2016; de Zambotti et al., 2014; Trinder et al., 2001). Collectively, these studies demonstrate an overall reduction in cardiovascular output and dominance of parasympathetic/vagal activity during NREM sleep (Busek et al., 2005), which has been associated with significant benefits for the cardiovascular system (Trinder et al., 2012). Considering that the most common reason for napping in healthy young adults seems to be for restorative purposes (Duggan et al., 2018), these data suggest that daytime naps may provide a compensatory protective window for the cardiovascular system (Naska et al., 2007) and serve as a “mini cardiovascular break” that might potentially benefit psychological and physiological health.

4.2 | Reduced mini-cardiovascular break in older adults' naps

Autonomic imbalance, indexed by low HF HRV and elevated sympathetic activity, is associated with various pathological conditions, such as cardiovascular disease, diabetes, and Alzheimer's disease. Given the parasympathetic dominance during sleep, nighttime sleep has been described as a “cardiovascular holiday” (Trinder et al., 2012). However, in our older subjects, the expected cardiovascular break was severely dampened, which builds upon previous findings examining nocturnal sleep (Brandenberger et al., 2003; Crasset et al., 2001). We first demonstrated no age differences between two waking conditions: a standard measure of quiet wake in which subjects lie in bed not intending to sleep, and a prenap rest condition more typical of sleep studies. These data are important for comparing across studies but also show that older adults show the same parasympathetic profile during wake as younger adults.

Our examination of autonomic profiles across prenap rest, wake after sleep onset, and sleep stages revealed that older adults may not confer the same restorative benefits from a nap as younger adults. We reported a drop in absolute HRV indices during NREM sleep specifically, in older subjects, compared with young subjects, with shorter RR intervals, lower TPln, lower vagally mediated HRV (reflected by RMSSDln, HF_{ln}, and HF_{nu}). The decreased vagally mediated HRV in aging reveals a tendency for a relative increase in vagal withdrawal and a predominant loss of parasympathetic activity, which may be related to the increased number of awakenings during the nap and lower duration of N3 in this age group (see Table 1). Whether the impaired autonomic balance causes the N3 decrease, or whether the decrease in N3 is simply reflected in vagally mediated HRV, is not yet known. Overall, the current findings are in alignment with previous

studies comparing younger versus older adult HRV during nocturnal sleep (Brandenberger et al., 2003). Although the total power dropped drastically from Rest to N2 and N3 in our elderly subjects, the relative increase in parasympathetic activity during N3 (reflected by HF_{nu}) suggested that the elderly might still have cardiovascular benefits from napping; however, nap might not be as restorative as their younger counterparts. Noteworthy, the age-related decrease in vagally mediated HRV was only shown in the nap but not in either wake conditions, suggesting a differential loss in ANS activity that is sleep-specific among older subjects compared to the younger. Such loss of sleep-associated HRV in older adults might reflect a reduced vagal cardiac control. Typically, the vagus nerve reduces the heart rate and enhances parasympathetic tone during NREM sleep via the vagal break sending a negative feedback loop to our CNS control center. With aging, both structural and functional changes occur in the arterial tree, with aortic wall thickening, increased arterial stiffness, and reduced artery compliance. As such, vagal break became less effective and not able to reach the cardiovascular break during naps. Here we show that among those who do not have waking HRV declines yet, they already showed a nap HRV decline. Therefore, it is possible that the decline in vagal cardiac control reflects on napping HRV first because it requires larger modulation and greater arterial elasticity, and then the vagal break gradually becomes more rigid such that HRV during wake cannot keep up with the young adults. Taken together, HRV during naps, but not quiet wake, might be a novel biomarker or target of intervention for cardiovascular health.

Although there is now substantial evidence that low HRV values during wake are associated with increased mortality risk in the elderly (Tsuji et al., 1994), it is not known if a drop in HRV indices during NREM sleep would be an additional risk factor for adverse cardiac events. Future studies on sleep interventions are needed to better elucidate the relationship between the dynamic, bidirectional association between sleep and the autonomic system. Intriguingly, a recent study showed that the acoustic enhancement of SWA increased parasympathetic activity (measured by HF_{nu}) in healthy young adults during nocturnal sleep (Grimaldi et al., 2019). Given that our data provide further evidence of parasympathetic loss during NREM sleep in aging, a variety of sleep intervention techniques (i.e., acoustic stimulation, noninvasive brain stimulation (NIBS) techniques) could potentially be utilized to consolidate N3 and enhance cardiovascular benefits or cognition in older populations. Furthermore, a number of studies have shown that physical training increases HRV in older subjects (Raffin et al., 2019). It can then be suggested that regular exercise might benefit the autonomic imbalance in the elderly and would restore the association between HRV and NREM sleep. Taken together, these findings have implications for translational medicine and suggest that aging can

represent a potentially informative model to investigate the complex interaction between autonomic activity, sleep, and health.

4.3 | Limitations

The present study is not without limitations. First, our sample was a convenience sample of both men and women, and uncontrolled variations in hormonal status among young women can have an impact on cardiac vagal activity (see Schmalenberger et al., 2019 for a review). Although time-domain measures (i.e., RMSSD) tend to be more stable across the menstrual cycle, frequency-domain measures of HRV may be susceptible to hormonal fluctuation (Sato et al., 1995; Yazar & Yazıcı, 2016). Future studies controlling for hormonal fluctuation will be needed to confirm the age-related changes in ANS profiles during naps. As a second limitation, no standardized diagnostic assessment of psychiatric disorder or chronic medical disease was performed to confirm the self-reported screening surveys. Third, older subjects showed higher BMI, higher caffeine, and alcohol intake than the younger cohorts. Although none of our participants reported a clinically significant medical condition or substance dependence, a subtle impact of obesity, caffeine, and alcohol on HRV cannot be excluded. Furthermore, older subjects expressed fragmented sleep architecture compared to the younger, with lower sleep efficiency, greater wake after sleep onset, less duration of SWS, and lower power in the slow oscillation, delta, and fast sigma bands during NREM sleep. However, we found no significant correlation between HRV variables and sleep parameters during any sleep stages. Additionally, we cannot rule out that there are individual differences in circadian cycling and the midday nap times that we chose for both older and younger adults likely aligned with different phases in an individual's natural circadian cycling. This may have influenced our results as the circadian system is known to impact on HRV. In addition, we also analyzed the frequency peak of HF (HFfp) in order to control for respiratory rate, which can affect the HRV (Song & Lehrer, 2003). HFfp showed no difference between the two age groups and varied within a narrow range in the HF spectrum, between 0.23 and 0.29 Hz, with the greatest difference of about 3 breaths per minute. Thus, the respiratory activity does not seem to play a key role in the age-related differences of HRV modulation. However, we cannot completely exclude that our younger and older subjects have no alteration in the cardiopulmonary coupling, as may be detected using measures of coherence (Thomas et al., 2005). Furthermore, standard practice for HRV analyses (Task Force, 1996) requires the assessment of HRV over a 5-min period of a consistent sleep stage (longer than 3-min in the current study). However, due to a large amount of sleep transitions present

in a daytime nap, especially in older adults, this method decreased the number of available subjects and may have biased the sample toward less fragmented sleepers. Notably, several studies have presented data with shorter epoch windows and demonstrated robust results (Shaffer & Ginsberg, 2017; Whitehurst et al., 2018). Nevertheless, we cannot exclude the impact of shorter windows on measures of HRV modulation.

Last, although the 3-min windows and the 1.5-min preceding and succeeding were free from arousals that are longer than 10 s, micro-arousals shorter than our 10 s-window could have been accompanied with bursts of sympathetic inputs and/or reduced vagal tone, which may have impacted some bins in any given sleep stage and biased the overall average. Indeed, previous studies have found that cortical arousals during NREM sleep were accompanied by muscle sympathetic nerve activity, heart rate increases, and increases in all spectral indexes of LF cardiovascular variability (Blasi et al., 2003). Additionally, REM sleep is defined by an erratic breathing pattern as well as quick, fluctuations in heart rate and blood pressure that are elicited by highly variable excitatory inputs to sympathetic neurons in the brainstem. This increase in phasic sympathetic activity during REM is one reason arousals are more prominent during this stage. This may have contributed to participants' inability to sustain REM sleep in the current study. Given our large discrepancy in REM sleep retention between older and younger samples, increased sympathetic tone (or reduced vagal tone) throughout sleep may also be one pathway resulting in restless, unconsolidated sleep in older adults. Again, binned analyses may be a major limitation to assessing HRV, especially in older samples. Future studies developing intervention methods that enhance vagal control among older adults are needed.

4.4 | Conclusions

The current study is the first, to our knowledge, to compare ANS profiles between young versus older adults during a daytime nap and a period of quiet resting. This is clinically relevant, given that nap frequency increases with age and that changes in HRV are associated with cardiovascular mortality. In summary, an increase in vagal withdrawal and a predominant loss of parasympathetic activity during NREM sleep in a daytime nap were found in our older subjects, compared to the younger, while not such age-related changes in autonomic profiles were found during quiet wake.

ACKNOWLEDGMENTS

This work was supported by the National Institutes of Health R01 (AG046646) and (AG061355). P.C. analyzed data and wrote the paper; S.C.M, L.N.W., and N.S. designed the study; L.N.W. and N.S. performed research; and S.C.M. supervised research. S.C.M, L.N.W., and N.S. edited the paper.

CONFLICT OF INTEREST

The authors have no conflicts of interest to declare.

AUTHOR CONTRIBUTIONS

Pin-Chun Chen: Conceptualization; Data curation; Formal analysis; Investigation; Methodology; Software; Validation; Visualization; Writing-original draft; Writing-review & editing. **Negin Sattari:** Data curation; Methodology; Project administration; Writing-review & editing. **Lauren N Whitehurst:** Data curation; Methodology; Project administration; Writing-review & editing. **Sara C Mednick:** Conceptualization; Funding acquisition; Investigation; Resources; Supervision; Writing-review & editing.

ORCID

Sara C. Mednick  <https://orcid.org/0000-0002-0906-3097>

REFERENCES

- Ako, M., Kawara, T., Uchida, S., Miyazaki, S., Nishihara, K., Mukai, J., Hirao, K., Ako, J., & Okubo, Y. (2003). Correlation between electroencephalography and heart rate variability during sleep. *Psychiatry and Clinical Neurosciences*, *57*(1), 59–65. <https://doi.org/10.1046/j.1440-1819.2003.01080.x>
- Baayen, R. H., Davidson, D. J., & Bates, D. M. (2008). Mixed-effects modeling with crossed random effects for subjects and items. *Special Issue: Emerging Data Analysis*, *59*(4), 390–412. <https://doi.org/10.1016/j.jml.2007.12.005>
- Bates, D., Mächler, M., Bolker, B., & Walker, S. (2015). Fitting linear mixed-effects models using lme4. *Journal of Statistical Software, Articles*, *67*(1), 1–48. <https://doi.org/10.18637/jss.v067.i01>
- Benjamin, E. J., Blaha, M. J., Chiuve, S. E., Cushman, M., Das, S. R., Deo, R., de Ferranti, S. D., Floyd, J., Fornage, M., Gillespie, C., Isasi, C. R., Jiménez, M. C., Jordan, L. C., Judd, S. E., Lackland, D., Lichtman, J. H., Lisabeth, L., Liu, S., Longenecker, C. T., ... Muntner, P. (2017). Heart disease and stroke statistics-2017 update: A report from the American Heart Association. *Circulation*, *135*(10), e146–e603. <https://doi.org/10.1161/CIR.0000000000000485>
- Billman, G. E. (2013). The LF/HF ratio does not accurately measure cardiac sympatho-vagal balance. *Frontiers in Physiology*, *4*, 26. <https://doi.org/10.3389/fphys.2013.00026>
- Blackwell, T., Yaffe, K., Ancoli-Israel, S., Schneider, J. L., Cauley, J. A., Hillier, T. A., Fink, H. A., & Stone, K. L., & for the Study of Osteoporotic Fractures Group. (2006). Poor sleep is associated with impaired cognitive function in older women: The study of osteoporotic fractures. *The Journals of Gerontology: Series A*, *61*(4), 405–410. <https://doi.org/10.1093/gerona/61.4.405>
- Blasi, A., Jo, J., Valladares, E., Morgan, B. J., Skatrud, J. B., & Khoo, M. C. (2003). Cardiovascular variability after arousal from sleep: Time-varying spectral analysis. *Journal of Applied Physiology*, *95*(4), 1394–1404.
- Boardman, A., Schlindwein, F. S., Rocha, A. P., & Leite, A. (2002). A study on the optimum order of autoregressive models for heart rate variability. *Physiological Measurement*, *23*(2), 325–336. <https://doi.org/10.1088/0967-3334/23/2/308>
- Borb, A. A., & Achermann, P. (1999). Sleep homeostasis and models of sleep regulation. *Journal of Biological Rhythms*, *14*(6), 559–570. <https://doi.org/10.1177/074873099129000894>
- Boudreau, P., Yeh, W. H., Dumont, G. A., & Boivin, D. B. (2013, December 1). Circadian variation of heart rate variability across sleep stages. *Sleep*, *36*(12), 1919–1928. <https://doi.org/10.5665/sleep.3230>
- Brandenberger, G., Ehrhart, J., Piquard, F., & Simon, C. (2001). Inverse coupling between ultradian oscillations in delta wave activity and heart rate variability during sleep. *Clinical Neurophysiology*, *112*(6), 992–996. [https://doi.org/10.1016/S1388-2457\(01\)00507-7](https://doi.org/10.1016/S1388-2457(01)00507-7)
- Brandenberger, G., Viola, A. U., Ehrhart, J., Charlou, A., Geny, B., Piquard, F., & Simon, C. (2003). Age-related changes in cardiac autonomic control during sleep. *Journal of Sleep Research*, *12*(3), 173–180. <https://doi.org/10.1046/j.1365-2869.2003.00353.x>
- Burr, R. L. (2007). Interpretation of normalized spectral heart rate variability indices in sleep research: A critical review. *Sleep*, *30*(7), 913–919.
- Busek, P., Vanková, J., Opavský, J., Salinger, J., & Nevsímalová, S. (2005). Spectral analysis of the heart rate variability in sleep. *Physiological Research*, *54*(4), 369–376. Epub 2004 Dec 9 PMID: 15588154.
- Campbell, S. S., Murphy, P. J., & Stauble, T. N. (2005). Effects of a nap on nighttime sleep and waking function in older subjects. *Journal of the American Geriatrics Society*, *53*(1), 48–53. <https://doi.org/10.1111/j.1532-5415.2005.53009.x>
- Campos, H., & Siles, X. (2000). Siesta and the risk of coronary heart disease: Results from a population-based, case-control study in Costa Rica. *International Journal of Epidemiology*, *29*, 429–437. <https://doi.org/10.1093/ije/29.3.429>
- Cellini, N., Whitehurst, L. N., McDevitt, E. A., & Mednick, S. C. (2016). Heart rate variability during daytime naps in healthy adults: Autonomic profile and short-term reliability. *Psychophysiology*, *53*(4), 473–481. <https://doi.org/10.1111/psyp.12595>
- Chadda, K. R., Ajjola, O. A., Vaseghi, M., Shivkumar, K., Huang, C.-L.-H., & Jeevaratnam, K. (2018). Ageing, the autonomic nervous system and arrhythmia: From brain to heart. *Ageing Research Reviews*, *48*, 40–50. <https://doi.org/10.1016/j.arr.2018.09.005>
- Chen, P.-C., Whitehurst, L. N., Naji, M., & Mednick, S. C. (2020a). Autonomic activity during a daytime nap facilitates working memory improvement. *Journal of Cognitive Neuroscience*, *32*(10), - , 1963–1974. https://doi.org/10.1162/jocn_a_01588
- Chen, P.-C., Whitehurst, L. N., Naji, M., & Mednick, S. C. (2020b). Autonomic/central coupling benefits working memory in healthy young adults. *Neurobiology of Learning and Memory*, *173*, 107267. <https://doi.org/10.1016/j.nlm.2020.107267>
- Chung, F., Yegneswaran, B., Liao, P. U., Chung, S. A., Vairavanathan, S., Islam, S., Khajehdehi, A., & Shapiro, C. M. (2008). STOP questionnaire: A tool to screen patients for obstructive sleep apnea. *Anesthesiology: The Journal of the American Society of Anesthesiologists*, *108*(5), 812–821. <https://doi.org/10.1097/ALN.0b013e31816d83e4>
- Colosimo, A., Giuliani, A., Mancini, A. M., Piccirillo, G., & Marigliano, V. (1997). Estimating a cardiac age by means of heart rate variability. *American Journal of Physiology-Heart and Circulatory Physiology*, *273*(4), H1841–H1847. <https://doi.org/10.1152/ajpheart.1997.273.4.H1841>
- Crasset, V., Silvia, M., Martine, A., Paul, L., Paul, D. J., & van de Borne, Philippe. (2001). Effects of aging and cardiac denervation on heart rate variability during sleep. *Circulation*, *103*(1), 84–88. <https://doi.org/10.1161/01.CIR.103.1.84>
- Cross, N., Terpening, Z., Rogers, N. L., Duffy, S. L., Hickie, I. B., Lewis, S. J. G., & Naismith, S. L. (2015). Napping in older people ‘at risk’

- of dementia: Relationships with depression, cognition, medical burden and sleep quality. *Journal of Sleep Research*, 24(5), 494–502. <https://doi.org/10.1111/jsr.12313>
- de Zambotti, M., Cellini, N., Baker, F. C., Colrain, I. M., Sarlo, M., & Stegagno, L. (2014). Nocturnal cardiac autonomic profile in young primary insomniacs and good sleepers. *International Journal of Psychophysiology*, 93(3), 332–339. <https://doi.org/10.1016/j.ijpsycho.2014.06.014>
- Duggan, K. A., McDevitt, E. A., Whitehurst, L. N., & Mednick, S. C. (2018). To nap, perchance to DREAM: A factor analysis of college students' self-reported reasons for napping. *Behavioral Sleep Medicine*, 16(2), 135–153. <https://doi.org/10.1080/15402002.2016.1178115>
- Electrophysiology Task Force of the European Society of Cardiology the North American Society of Pacing. (1996). Heart rate variability. *Circulation*, 93(5), 1043–1065. <https://doi.org/10.1161/01.CIR.93.5.1043>
- Gatz, M., Reynolds, C. A., John, R., Johansson, B., Mortimer, J. A., & Pedersen, N. L. (2002). Telephone screening to identify potential dementia cases in a population-based sample of older adults. *International Psychogeriatrics*, 14(3), 273–289. <https://doi.org/10.1017/S1041610202008475>
- Grimaldi, D., Papalambros, N. A., Reid, K. J., Abbott, S. M., Malkani, R. G., Gendy, M., Iwanaszko, M., Braun, R. I., Sanchez, D. J., Paller, K. A., & Zee, P. C. (2019). Strengthening sleep–autonomic interaction via acoustic enhancement of slow oscillations. *Sleep*, 42(5), zsz036. <https://doi.org/10.1093/sleep/zsz036>
- Guo, Y.-F., & Stein, P. K. (2003). Circadian rhythm in the cardiovascular system: Chronocardiography. *American Heart Journal*, 145(5), 779–786. [https://doi.org/10.1016/S0002-8703\(02\)94797-6](https://doi.org/10.1016/S0002-8703(02)94797-6)
- Hansen, A. L., Johnsen, B. H., Sollers, J. J., Stenvik, K., & Thayer, J. F. (2004). Heart rate variability and its relation to prefrontal cognitive function: The effects of training and detraining. *European Journal of Applied Physiology*, 93(3), 263–272. <https://doi.org/10.1007/s00421-004-1208-0>
- Hansen, A. L., Johnsen, B. H., & Thayer, J. F. (2003). Vagal influence on working memory and attention. *International Journal of Psychophysiology*, 48(3), 263–274. [https://doi.org/10.1016/S0167-8760\(03\)00073-4](https://doi.org/10.1016/S0167-8760(03)00073-4)
- Heckenberg, R. A., Eddy, P., Kent, S., & Wright, B. J. (2018). Do workplace-based mindfulness meditation programs improve physiological indices of stress? A systematic review and meta-analysis. *Journal of Psychosomatic Research*, 114, 62–71. <https://doi.org/10.1016/j.jpsychores.2018.09.010>
- Hirshkowitz, M., Whiton, K., Albert, S. M., Alessi, C., Bruni, O., DonCarlos, L., Hazen, N., Herman, J., Katz, E. S., Kheirandish-Gozal, L., Neubauer, D. N., O'Donnell, A. E., Ohayon, M., Peever, J., Rawding, R., Sachdeva, R. C., Setters, B., Vitiello, M. V., Ware, J. C., & Adams Hillard, P. J. (2015). National Sleep Foundation's sleep time duration recommendations: Methodology and results summary. *Sleep Health: Journal of the National Sleep Foundation*, 1(1), 40–43.
- Horne, J. A., & Östberg, O. (1976). A self-assessment questionnaire to determine morningness-eveningness in human circadian rhythms. *International Journal of Chronobiology*, 4(2), 97–110.
- Jarczok, M. N., Guendel, H., McGrath, J. J., & Balint, E. M. (2019). Circadian rhythms of the autonomic nervous system: Scientific implication and practical implementation. In *Chronobiology—The science of biological time structure*. IntechOpen.
- Jasper, H. H. (1958). The ten-twenty electrode system of the international federation. *Electroencephalography and Clinical Neurophysiology*, 10, 371–375.
- Johns, M. W. (1991). A new method for measuring daytime sleepiness: The Epworth Sleepiness Scale. *Sleep: Journal of Sleep Research & Sleep Medicine*, 14(6), 540–545. <https://doi.org/10.1093/sleep/14.6.540>
- Jung, K. I., Song, C. H., Ancoli-Israel, S., & Barrett-Connor, E. (2013, January). Gender differences in nighttime sleep and daytime napping as predictors of mortality in older adults: The Rancho Bernardo study. *Sleep Medicine*, 14(1), 12–19. <https://doi.org/10.1016/j.sleep.2012.06.004>
- Keage, H. A. D., Banks, S., Yang, K. L., Morgan, K., Brayne, C., & Matthews, F. E. (2012). What sleep characteristics predict cognitive decline in the elderly? *Sleep Medicine*, 13(7), 886–892. <https://doi.org/10.1016/j.sleep.2012.02.003>
- Kemp, A. H., & Quintana, D. S. (2013). The relationship between mental and physical health: Insights from the study of heart rate variability. *International Journal of Psychophysiology*, 89(3), 288–296. <https://doi.org/10.1016/j.ijpsycho.2013.06.018>
- Krygier, J. R., Heathers, J. A. J., Shahrestani, S., Abbott, M., Gross, J. J., & Kemp, A. H. (2013). Mindfulness meditation, well-being, and heart rate variability: A preliminary investigation into the impact of intensive Vipassana meditation. *International Journal of Psychophysiology*, 89(3), 305–313. <https://doi.org/10.1016/j.ijpsycho.2013.06.017>
- Laborde, S., Mosley, E., & Thayer, J. F. (2017). Heart rate variability and cardiac vagal tone in psychophysiological research—Recommendations for experiment planning, data analysis, and data reporting. *Frontiers in Psychology*, 8, 213. <https://doi.org/10.3389/fpsyg.2017.00213>
- Leng, Y., Wainwright, N. W., Cappuccio, F. P., Surtees, P. G., Hayat, S., Luben, R., Brayne, C., & Khaw, K. T. (2014). Daytime napping and the risk of all-cause and cause-specific mortality: A 13-year follow-up of a British population. *American Journal of Epidemiology*, 179(9), 1115–1124. <https://doi.org/10.1093/aje/kwu036>
- Lenth, R. (2016). Least-squares means: The R Package lsmeans. *Journal of Statistical Software, Articles*, 69(1), 1–33. <https://doi.org/10.18637/jss.v069.i01>
- Lewis, F., Butler, A., & Gilbert, L. (2011). A unified approach to model selection using the likelihood ratio test. *Methods in Ecology and Evolution*, 2(2), 155–162. <https://doi.org/10.1111/j.2041-210X.2010.00063.x>
- Lin, L.-C., Chiang, C.-T., Lee, M.-W., Mok, H.-K., Yang, Y.-H., Wu, H.-C., Tsai, C.-L., & Yang, R.-C. (2013). Parasympathetic activation is involved in reducing epileptiform discharges when listening to Mozart music. *Clinical Neurophysiology*, 124(8), 1528–1535. <https://doi.org/10.1016/j.clinph.2013.02.021>
- Mankus, A. M., Aldao, A., Kerns, C., Mayville, E. W., & Mennin, D. S. (2013). Mindfulness and heart rate variability in individuals with high and low generalized anxiety symptoms. *Behaviour Research and Therapy*, 51(7), 386–391. <https://doi.org/10.1016/j.brat.2013.03.005>
- Mattarozzi, K., Colonnello, V., Thayer, J. F., & Ottaviani, C. (2019). Trusting your heart: Long-term memory for bad and good people is influenced by resting vagal tone. *Consciousness and Cognition*, 75, 102810. <https://doi.org/10.1016/j.concog.2019.102810>
- McEwen, B. S. (2002). Sex, stress and the hippocampus: Allostasis, allostatic load and the aging process. *Brain Aging: Identifying the Brakes and Accelerators*, 23(5), 921–939. [https://doi.org/10.1016/S0197-4580\(02\)00027-1](https://doi.org/10.1016/S0197-4580(02)00027-1)
- Mednick, S. C., McDevitt, E. A., Walsh, J. K., Wamsley, E., Paulus, M., Kanady, J. C., & Drummond, S. P. A. (2013). The critical role

- of sleep spindles in hippocampal-dependent memory: A pharmacology study. *The Journal of Neuroscience*, *33*(10), 4494. <https://doi.org/10.1523/JNEUROSCI.3127-12.2013>
- Mednick, S., Nakayama, K., & Stickgold, R. (2003). Sleep-dependent learning: A nap is as good as a night. *Nature Neuroscience*, *6*(7), 697–698. <https://doi.org/10.1038/nn1078>
- Monk, T. H. (2005). Aging human circadian rhythms: Conventional wisdom may not always be right. *Journal of Biological Rhythms*, *20*(4), 366–374. <https://doi.org/10.1177/0748730405277378>
- Mosley, E., Laborde, S., & Kavanagh, E. (2018). Coping related variables, cardiac vagal activity and working memory performance under pressure. *Acta Psychologica*, *191*, 179–189. <https://doi.org/10.1016/j.actpsy.2018.09.007>
- Naska, A., Oikonomou, E., Trichopoulou, A., Psaltopoulou, T., & Trichopoulos, D. (2007). Siesta in healthy adults and coronary mortality in the general population. *Archives of Internal Medicine*, *167*(3), 296–301. <https://doi.org/10.1001/archinte.167.3.296>
- National Center for Health Statistics. (2018). *Health, United States, 2017. Table 19: Leading Causes of Death and Numbers of Deaths, by Sex, Race, and Hispanic Origin: United States, 1980 and 2016 pdf icon[PDF-776M]*. National Center for Health Statistics.
- O'Brien, I. A., O'Hare, P., & Corrall, R. J. (1986). Heart rate variability in healthy subjects: Effect of age and the derivation of normal ranges for tests of autonomic function. *British Heart Journal*, *55*(4), 348–354. <https://doi.org/10.1136/hrt.55.4.348>
- Ohayon, M. M., & Vecchierini, M.-F. (2002). Daytime sleepiness and cognitive impairment in the elderly population. *Archives of Internal Medicine*, *162*(2), 201–208. <https://doi.org/10.1001/archinte.162.2.201>
- Ohayon, M. M., & Zully, J. (1999). Prevalence of naps in the general population. *Sleep and Hypnosis*, *1*(2), 88–97.
- Pavlov, V. A., & Tracey, K. J. (2012). The vagus nerve and the inflammatory reflex—Linking immunity and metabolism. *Nature Reviews Endocrinology*, *8*(12), 743–754. <https://doi.org/10.1038/nrendo.2012.189>
- Pinna, G. D., Maestri, R., Torunski, A., Danilowicz-Szymanowicz, L., Szwoch, M., La Rovere, M. T., & Raczak, G. (2007). Heart rate variability measures: A fresh look at reliability. *Clinical Science*, *113*(3), 131–140. <https://doi.org/10.1042/CS20070055>
- Raffin, J., Barthélémy, J.-C., Dupré, C., Pichot, V., Berger, M., Féasson, L., Busso, T., Da Costa, A., Colvez, A., Montuy-Coquard, C., Bouvier, R., Bongue, B., Roche, F., & Hupin, D. (2019). Exercise frequency determines heart rate variability gains in older people: A meta-analysis and meta-regression. *Sports Medicine*, *49*(5), 719–729. <https://doi.org/10.1007/s40279-019-01097-7>
- Reyes del Paso, G. A., Langewitz, W., Mulder, L. J. M., van Roon, A., & Duschek, S. (2013). The utility of low frequency heart rate variability as an index of sympathetic cardiac tone: A review with emphasis on a reanalysis of previous studies. *Psychophysiology*, *50*(5), 477–487. <https://doi.org/10.1111/psyp.12027>
- Russoniello, C. V., Zhironov, Y. N., Pougatchev, V. I., & Gribkov, E. N. (2013). Heart rate variability and biological age: implications for health and gaming. *Cyberpsychology, Behavior, and Social Networking*, *16*, 302–308. <https://doi.org/10.1089/cyber.2013.1505>
- Santillo, E., Migale, M., Fallavollita, L., Marini, L., & Balestrini, F. (2012). *Electrocardiographic analysis of heart rate variability in aging heart*. <https://doi.org/10.5772/22538>
- Sato, N., Miyake, S., Akatsu, J., & Kumashiro, M. (1995). power spectral analysis of heart rate variability in healthy young women during the normal menstrual cycle. *Psychosomatic Medicine*, *57*(4), https://journals.lww.com/psychosomaticmedicine/Fulltext/1995/07000/Power_Spectral_Analysis_of_Heart_Rate_Variability.4.aspx. <https://doi.org/10.1097/00006842-199507000-00004>
- Schmalenberger, K. M., Eisenlohr-Moul, T. A., Würth, L., Schneider, E., Thayer, J. F., Ditzen, B., & Jarczok, M. N. (2019). A systematic review and meta-analysis of within-person changes in cardiac vagal activity across the menstrual cycle: Implications for female health and future studies. *Journal of Clinical Medicine*, *8*(11), 1946. <https://doi.org/10.3390/jcm8111946>
- Shaffer, F., & Ginsberg, J. P. (2017). An overview of heart rate variability metrics and norms. *Frontiers Public Health*, *5*, 258. <https://doi.org/10.3389/fpubh.2017.00258>
- Shaffer, F., McCraty, R., & Zerr, C. L. (2014). A healthy heart is not a metronome: An integrative review of the heart's anatomy and heart rate variability. *Frontiers in Psychology*, *5*, 1040. <https://doi.org/10.3389/fpsyg.2014.01040>
- Sinnreich, R., Kark, J. D., Friedlander, Y., Sapoznikov, D., & Luria, M. H. (1998). Five minute recordings of heart rate variability for population studies: Repeatability and age–sex characteristics. *Heart*, *80*(2), 156. <https://doi.org/10.1136/hrt.80.2.156>
- Smith, R., Thayer, J. F., Khalsa, S. S., & Lane, R. D. (2017). The hierarchical basis of neurovisceral integration. *Neuroscience & Biobehavioral Reviews*, *75*, 274–296. <https://doi.org/10.1016/j.neubiorev.2017.02.003>
- Song, H.-S., & Lehrer, P. M. (2003). The effects of specific respiratory rates on heart rate and heart rate variability. *Applied Psychophysiology and Biofeedback*, *28*(1), 13–23.
- Thayer, J. F., Hansen, A. L., Saus-Rose, E., & Johnsen, B. H. (2009, April). Heart rate variability, prefrontal neural function, and cognitive performance: the neurovisceral integration perspective on self-regulation, adaptation, and health. *Annals of Behavioral Medicine*, *37*(2), 141–153. <https://doi.org/10.1007/s12160-009-9101-z>
- Thayer, J. F., & Lane, R. D. (2007). The role of vagal function in the risk for cardiovascular disease and mortality. *Biological Psychology*, *74*(2), 224–242. <https://doi.org/10.1016/j.biopsycho.2005.11.013>
- Thayer, J. F., & Lane, R. D. (2009). Claude Bernard and the heart–brain connection: Further elaboration of a model of neurovisceral integration. *Neuroscience & Biobehavioral*, *33*(2), 81–88. <https://doi.org/10.1016/j.neubiorev.2008.08.004>
- Thayer, J. F., Yamamoto, S. S., & Brosschot, J. F. (2010). The relationship of autonomic imbalance, heart rate variability and cardiovascular disease risk factors. *International Journal of Cardiology*, *141*(2), 122–131. <https://doi.org/10.1016/j.ijcard.2009.09.543>
- Thomas, R. J., Mietus, J. E., Peng, C.-K., & Goldberger, A. L. (2005). An electrocardiogram-based technique to assess cardiopulmonary coupling during sleep. *Sleep*, *28*(9), 1151–1161. <https://doi.org/10.1093/sleep/28.9.1151>
- Tobaldini, E., Nobili, L., Strada, S., Casali, K., Braghiroli, A., & Montano, N. (2013). Heart rate variability in normal and pathological sleep. *Frontiers in Physiology*, *4*, 294. <https://doi.org/10.3389/fphys.2013.00294>
- Trinder, J., Kleiman, J., Carrington, M., Smith, S., Breen, S., Tan, N., & Kim, Y. (2001). Autonomic activity during human sleep as a function of time and sleep stage. *Journal of Sleep Research*, *10*(4), 253–264. <https://doi.org/10.1046/j.1365-2869.2001.00263.x>
- Trinder, J., Waloszek, J., Woods, M. J., & Jordan, A. S. (2012). Sleep and cardiovascular regulation. *Pflügers Archiv - European Journal of Physiology*, *463*(1), 161–168. <https://doi.org/10.1007/s00424-011-1041-3>

- Tsuji, H., Venditti, F. J., Jr., Manders, E. S., Evans, J. C., Larson, M. G., Feldman, C. L., & Levy, D. (1994). Reduced heart rate variability and mortality risk in an elderly cohort. The Framingham Heart Study. *Circulation*, *90*(2), 878–883.
- Whitehurst, L. N., Cellini, N., McDevitt, E. A., Duggan, K. A., & Mednick, S. C. (2016). Autonomic activity during sleep predicts memory consolidation in humans. *Proceedings of the National Academy of Sciences*, *113*(26), 7272. <https://doi.org/10.1073/pnas.1518202113>
- Whitehurst, L. N., Chen, P.-C., Naji, M., & Mednick, S. C. (2020). New directions in sleep and memory research: The role of autonomic activity. *Current Opinion in Behavioral Sciences*, *33*, 17–24. <https://doi.org/10.1016/j.cobeha.2019.11.001>
- Whitehurst, L. N., Naji, M., & Mednick, S. C. (2018). Comparing the cardiac autonomic activity profile of daytime naps and nighttime sleep. *Neurobiology of Sleep and Circadian Rhythms*, *5*, 52–57. <https://doi.org/10.1016/j.nbscr.2018.03.001>
- Williams, D. P., Cash, C., Rankin, C., Bernardi, A., Koenig, J., & Thayer, J. F. (2015). Resting heart rate variability predicts self-reported difficulties in emotion regulation: A focus on different facets of emotion regulation. *Frontiers in Psychology*, *6*, 261. <https://doi.org/10.3389/fpsyg.2015.00261>
- Yazar, Ş., & Yazıcı, M. (2016). Impact of menstrual cycle on cardiac autonomic function assessed by heart rate variability and heart rate recovery. *Medical Principles and Practice*, *25*(4), 374–377. <https://doi.org/10.1159/000444322>
- Zhang, J. (2007). Effect of age and sex on heart rate variability in healthy subjects. *Journal of Manipulative and Physiological Therapeutics*, *30*(5), 374–379. <https://doi.org/10.1016/j.jmpt.2007.04.001>

How to cite this article: Chen P-C, Sattari N, Whitehurst LN, Mednick SC. Age-related losses in cardiac autonomic activity during a daytime nap. *Psychophysiology*. 2021;58:e13701. <https://doi.org/10.1111/psyp.13701>