



2020

The First Mitochondrial Genome of the Living-Fossil Sawfly *Macroxyela ferruginea* (Hymenoptera: Xyelidae, Macroxyelinae)

Bo-Ying Zheng
Ministry of Agriculture, China

Ze-Kai Li
Zhejiang University, China

Xiao-Fei Li
Zhejiang University, China

Jia-Chen Zhu
Ministry of Agriculture, China

Michael J. Sharkey
University of Kentucky, msharkey@uky.edu

See next page for additional authors

Follow this and additional works at: https://uknowledge.uky.edu/entomology_facpub



Part of the [Entomology Commons](#)

[Right click to open a feedback form in a new tab to let us know how this document benefits you.](#)

Repository Citation

Zheng, Bo-Ying; Li, Ze-Kai; Li, Xiao-Fei; Zhu, Jia-Chen; Sharkey, Michael J.; Tang, Pu; and Chen, Xue-Xin, "The First Mitochondrial Genome of the Living-Fossil Sawfly *Macroxyela ferruginea* (Hymenoptera: Xyelidae, Macroxyelinae)" (2020). *Entomology Faculty Publications*. 207.
https://uknowledge.uky.edu/entomology_facpub/207

This Article is brought to you for free and open access by the Entomology at UKnowledge. It has been accepted for inclusion in Entomology Faculty Publications by an authorized administrator of UKnowledge. For more information, please contact UKnowledge@lsv.uky.edu.

The First Mitochondrial Genome of the Living-Fossil Sawfly *Macroxyela ferruginea* (Hymenoptera: Xyelidae, Macroxyelinae)

Digital Object Identifier (DOI)

<https://doi.org/10.1080/23802359.2019.1694849>

Notes/Citation Information

Published in *Mitochondrial DNA Part B: Resources*, v. 5, no. 1.

© 2019 The Author(s)

This is an Open Access article distributed under the terms of the Creative Commons Attribution License (<https://creativecommons.org/licenses/by/4.0/>), which permits unrestricted use, distribution, and reproduction in any medium, provided the original work is properly cited.

Authors

Bo-Ying Zheng, Ze-Kai Li, Xiao-Fei Li, Jia-Chen Zhu, Michael J. Sharkey, Pu Tang, and Xue-Xin Chen

The first mitochondrial genome of the living-fossil sawfly *Macroxyela ferruginea* (Hymenoptera: Xyelidae, Macroxyelinae)

Bo-Ying Zheng^{a,b}, Ze-Kai Li^{b,c}, Xiao-Fei Li^{b,d}, Jia-Chen Zhu^{a,b,c}, Michael Sharkey^e, Pu Tang^{a,b,c,d} and Xue-Xin Chen^{a,b,c,d}

^aMinistry of Agriculture Key Lab of Molecular Biology of Crop Pathogens and Insects, Zhejiang University, Hangzhou, China; ^bInstitute of Insect Sciences, Zhejiang University, Hangzhou, China; ^cZhejiang Provincial Key Lab of Biology of Crop Pathogens and Insects, Zhejiang University, Hangzhou, China; ^dState Key Laboratory of Rice Biology, Zhejiang University, Hangzhou, China; ^eDepartment of Entomology, University of Kentucky, Lexington, KY, USA

ABSTRACT

The living-fossil sawfly *Macroxyela ferruginea* (Xyelidae: Macroxyelinae) was one of the oldest species of Hymenoptera. We sequenced the mitochondrial genome, 15,465 bp in size. All 37 typical mitochondrial genes were possessed. There is only one rearrangement of gene order, where *trnM* and *trnQ* were shuffled. We also found this order was shared with *Xyela* sp., which also belongs to family Xyelidae. The 13 protein-coding genes of this sequence and the other 10 species from eight superfamilies in Hymenoptera were all used for phylogenetic analysis by maximum likelihood (ML) analysis and Bayesian inference (BI), with *Ascaloptynx appendiculatus* from Neuroptera as an outgroup. The topology demonstrated that *M. ferruginea* was sister to *Xyela* sp., supporting that they belong to one family Xyelidae.

ARTICLE HISTORY

Received 2 September 2019
Accepted 27 October 2019

KEYWORDS

Mitochondrial genome;
living-fossil sawfly; Xyelidae;
Macroxyela; phylogeny



The living-fossil sawfly *Macroxyela ferruginea* belongs to the genus *Macroxyela* within the subfamily Macroxyelinae (Hymenoptera: Xyelidae) (Smith and Schiff 1998). The superfamily Xyeloidea, a poor-species lineage, only has one family Xyelidae and two extant subfamilies, Macroxyelinae and Xyelinae (Taeger et al. 2010). Furthermore, Xyelidae, with numerous fossil records, is sister to all other extant Hymenoptera. *Macroxyela* is only distributed in North America (Smith and Schiff 1998). Its closest lineage is the genus *Megaxyela* which occurs only in eastern Asia and eastern North American (Blank et al. 2017). Typically, *Macroxyela* is rarely collected, although *M. ferruginea* can be often found on its host angiospermous trees (Smith and Schiff 1998). In terms of morphology, its long hind legs and colorful body are worthy of note.

In this study, we got the mt-genome of *M. ferruginea* by next-generation sequencing. The sample was collected from Plummers Island (Cabin John, MD, USA) (38°58'10"N, 77°10'35"W) during March 1999. After sampling, the voucher specimen (ZJUH_190001) was stored in 100% ethanol and kept in the Parasitic Hymenoptera Collection of Institute of Insect Sciences, Zhejiang University. The whole genomic DNA was extracted from one female adult specimen using DNeasy tissue kit (Qiagen, Hilden, Germany) and remaining specimen is deposited there. The library was constructed by VAHTS™ Universal DNA Library Prep Kit for Illumina® v3, and

sequenced by Illumina HiSeq X Ten sequencer (150 bp paired-end). The reads were filtered by local BLAST with *E* value 1×10^{-5} referencing to all Symphyta mitochondrial genomes dataset, subsequently, assembled by IDBA_UD (Peng et al. 2012).

The mitochondrial genome of *M. ferruginea* is 15,465 bp in length (GenBank accession MK270536), containing 13 protein-coding genes (PCGs), 22 transfer RNA (tRNA) genes, and two ribosomal RNA (rRNA) genes, but part of the control region (D-loop) failed to be sequenced or assembled. All genes show the conservative arrangement compared with the ancestral type of *Drosophila melanogaster*. The only rearrangement of gene order is that *trnM* and *trnQ* were shuffled in this mitogenome sequence. In addition, we compared the order of genes of *M. ferruginea* with its closest lineage *Xyela* sp. from another subfamily Xyelinae (Tang et al. 2019). Both have the same arrangements. The same gene order shared by different subfamilies in mitogenomes evidenced the conservative evolution of this group compared to the other lineages of Hymenoptera.

The complete or nearly complete mitochondrial genomes of the family Xyelidae is very limited, with only one reported species *Xyela* sp. The 13 PCG sequences of *M. ferruginea* and other 10 species from eight representative superfamilies were used for phylogenetic analysis by maximum likelihood (ML) methods in software IQtree v1.6.12 (Nguyen et al. 2015) and

CONTACT Xue-Xin Chen  xxchen@zju.edu.cn  Ministry of Agriculture Key Lab of Molecular Biology of Crop Pathogens and Insects, Zhejiang University, Hangzhou 310058, China

© 2019 The Author(s). Published by Informa UK Limited, trading as Taylor & Francis Group.

This is an Open Access article distributed under the terms of the Creative Commons Attribution License (<http://creativecommons.org/licenses/by/4.0/>), which permits unrestricted use, distribution, and reproduction in any medium, provided the original work is properly cited.

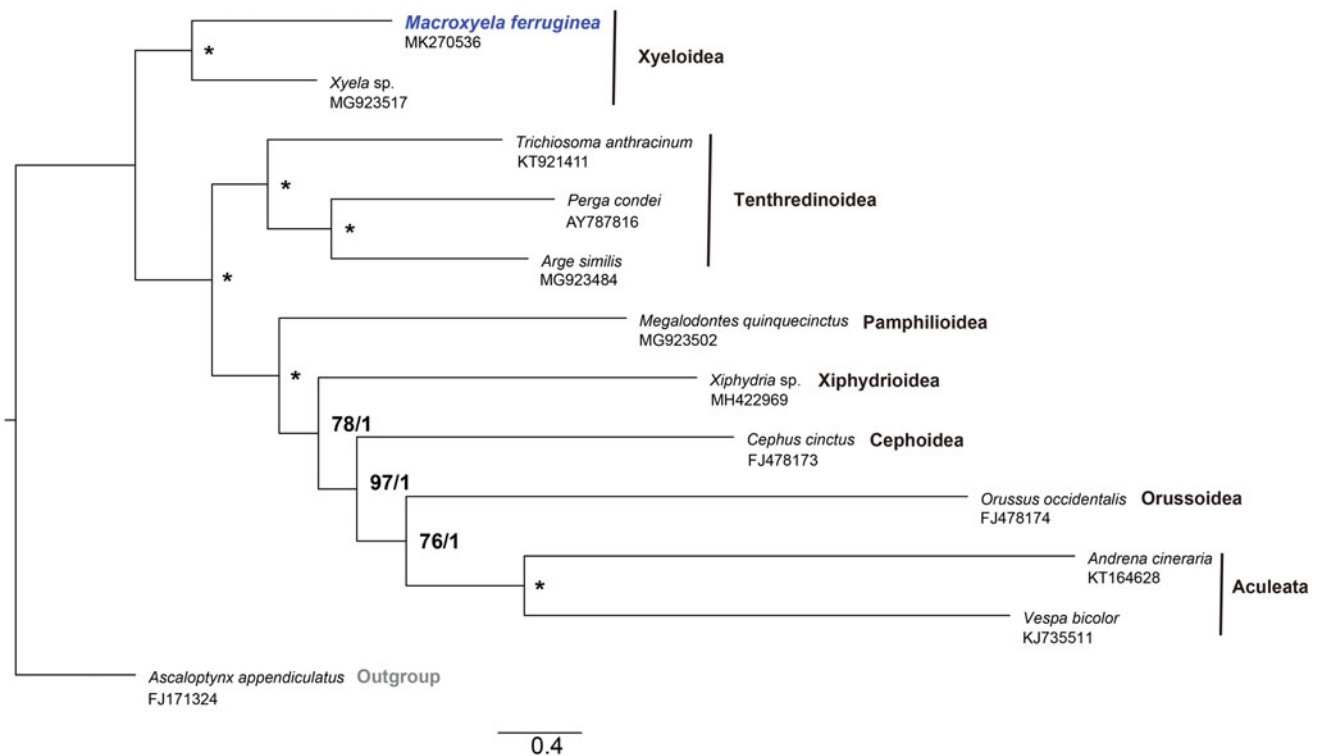


Figure 1. Phylogenetic tree of maximum likelihood (ML) methods and Bayesian inference (BI) using matrixes of 13 PCGs in mitochondrial genomes of 11 representative lineages in Hymenoptera and one outgroup *Ascaloptynx appendiculatus*. The support values of the corresponding nodes are shown above (left is bootstraps of ML, right is posterior probability of BI, “*” indicates that bootstraps = 100 and posterior probability = 1).

Bayesian inference (BI) in MrBayes v3.2.549 (Ronquist et al. 2012), with *Ascaloptynx appendiculatus* from Neuroptera as an outgroup. *M. ferruginea* is sister to *Xyela* sp., a species also belonging to Xyelidae, with a confidence value (bootstraps = 100, posterior probability = 1), a basal group to other lineages of Hymenoptera (Figure 1). This result was consistent with other results from the analyses based on morphological characters and several sequences before (Schulmeister 2003; Sharkey et al. 2012; Ma et al. 2019).

Acknowledgments

We would like to thank Susanne Schulmeister (University of Zurich) for the assistance in specimen identification, and Wang Chunhong (Zhejiang University) for taking pictures of the specimen.

Disclosure statement

No potential conflict of interest was reported by the authors. The authors are responsible for the content and writing of the paper.

Funding

This work was supported by the National Key R&D Program of China [2017YFD0201000], the National Natural Science Foundation of China [31401996, 31702035], and the Fundamental Research Funds for the Central Universities [2019FZA6012].

References

- Blank SM, Kramp K, Smith DR, Sundukov YN, Shinohara A. 2017. Big and beautiful: the Megaxyela species (Hymenoptera, Xyelidae) of East Asia and North America. *Eur J Taxon.* 348:1–46.
- Ma Y, Zheng BY, Zhu JC, van Achterberg C, Tang P, Chen XX. 2019. The first two mitochondrial genomes of wood wasps (Hymenoptera: Symphyta): novel gene rearrangements and higher-level phylogeny of the basal hymenopteran. *Int J Biol Macromol.* 123:1189–1196.
- Nguyen LT, Schmidt HA, Von Haeseler A, Minh BQ. 2015. IQ-TREE: a fast and effective stochastic algorithm for estimating maximum-likelihood phylogenies. *Mol Biol Evol.* 32(1):268–274.
- Peng Y, Leung HCM, Yiu SM, Chin F. 2012. IDBA-UD: a de novo assembler for single-cell and metagenomic sequencing data with highly uneven depth. *Bioinformatics.* 28(11):1420–1428.
- Ronquist F, Teslenko M, Van der MP, Ayres DL, Darling A, Höhna S, Larget B, Liu L, Suchard MA, Huelsenbeck JP. 2012. MrBayes 3.2: efficient Bayesian phylogenetic inference and model choice across a large model space. *Syst Biol.* 61(3):539–542.
- Schulmeister S. 2003. Genitalia and terminal abdominal segments of male basal Hymenoptera (Insecta): morphology and evolution. *Org Divers Evol.* 3(4):253–279.
- Sharkey MJ, Carpenter JM, Vilhelmsen L, Heraty J, Liljebblad J, Dowling APG, Schulmeister S, Murray D, Deans AR, Ronquist F, et al. 2012. Phylogenetic relationships among superfamilies of Hymenoptera. *Cladistics.* 28(1):80–112.
- Smith DR, Schiff NM. 1998. The genera *Macroxyela* Kirby and *Megaxyela* Ashmead (Hymenoptera: Xyelidae) in North America. *Proc Entomol Soc Wash.* 100:636–657.
- Taeger A, Blank SM, Liston AD. 2010. World catalog of Symphyta (Hymenoptera). *Zootaxa.* 2580(1):1–1064.
- Tang P, Zhu JC, Zheng BY, Wei SJ, Sharkey MJ, Chen XX, Vogler AP. 2019. Mitochondrial phylogenomics of the Hymenoptera. *Mol Phylogenet Evol.* 131:8–18.