

University of Kentucky

UKnowledge

Health Management and Policy Presentations

Health Management and Policy

10-31-2016

Aligning Delivery & Financing Systems to Build a Culture of Health

Glen P. Mays

University of Kentucky, glen.mays@cuanschutz.edu

Follow this and additional works at: https://uknowledge.uky.edu/hsm_present



Part of the [Health and Medical Administration Commons](#)

[Right click to open a feedback form in a new tab to let us know how this document benefits you.](#)

Repository Citation

Mays, Glen P., "Aligning Delivery & Financing Systems to Build a Culture of Health" (2016). *Health Management and Policy Presentations*. 141.

https://uknowledge.uky.edu/hsm_present/141

This Presentation is brought to you for free and open access by the Health Management and Policy at UKnowledge. It has been accepted for inclusion in Health Management and Policy Presentations by an authorized administrator of UKnowledge. For more information, please contact UKnowledge@lsv.uky.edu.



Systems for Action

National Coordinating Center

Systems and Services Research to Build a Culture of Health

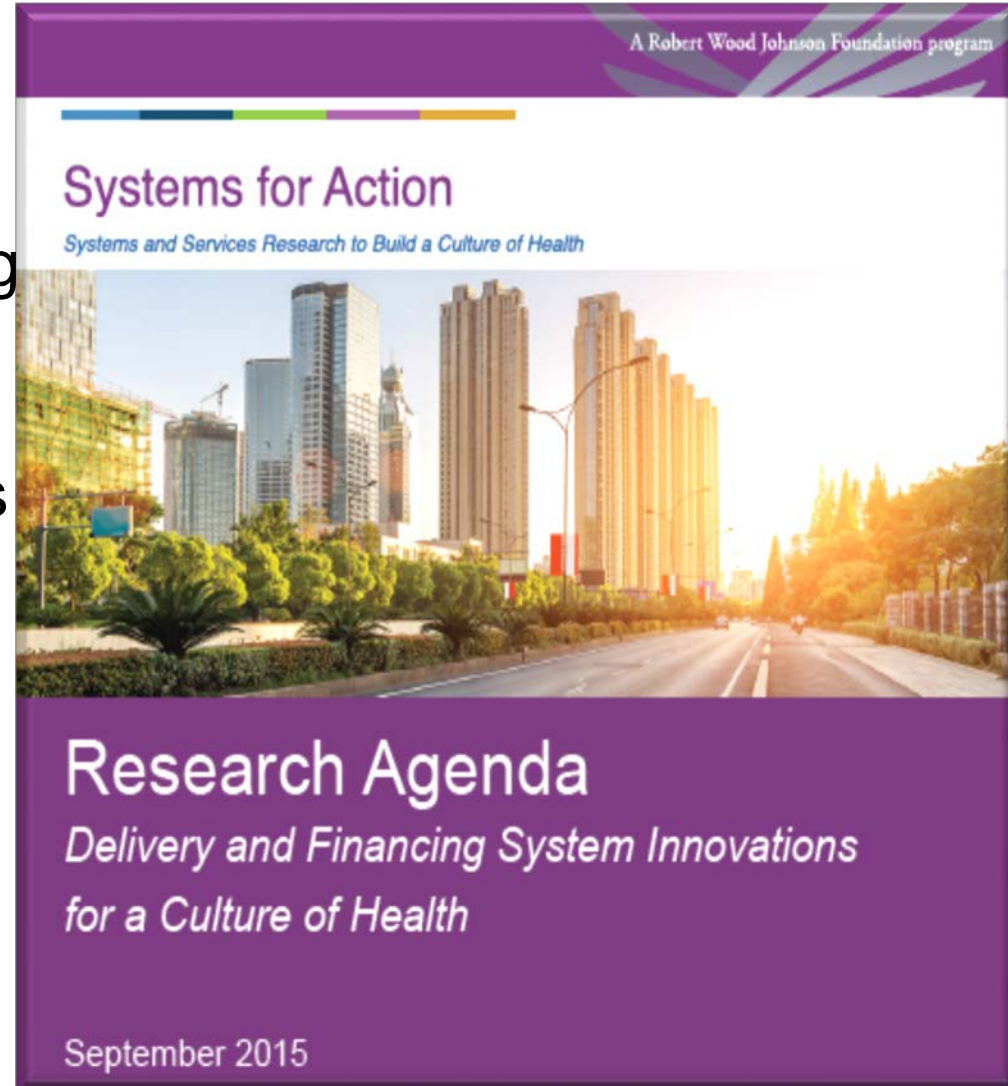
Aligning Delivery & Financing Systems to Build a Culture of Health

Glen Mays, PhD, MPH
University of Kentucky

Mission: Widen the lens beyond health care & public health systems

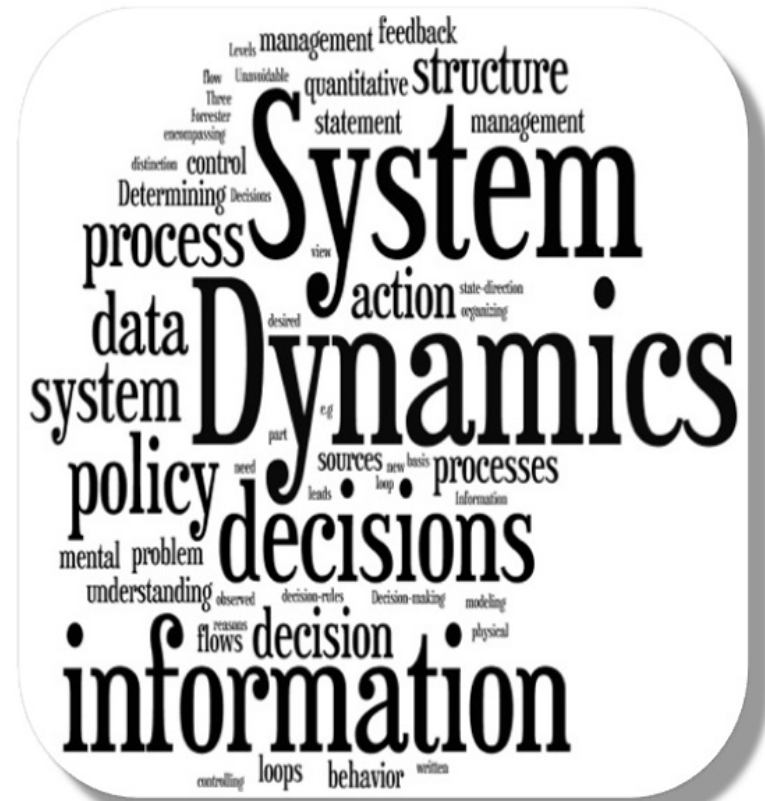
Rigorous research to identify novel mechanisms for aligning delivery and financing systems in **medical care**, **public health**, and **social & community services** in ways that improve **health** and **wellbeing**, achieve **efficiencies** in resource use, and reduce **inequities**.

www.systemsforaction.org

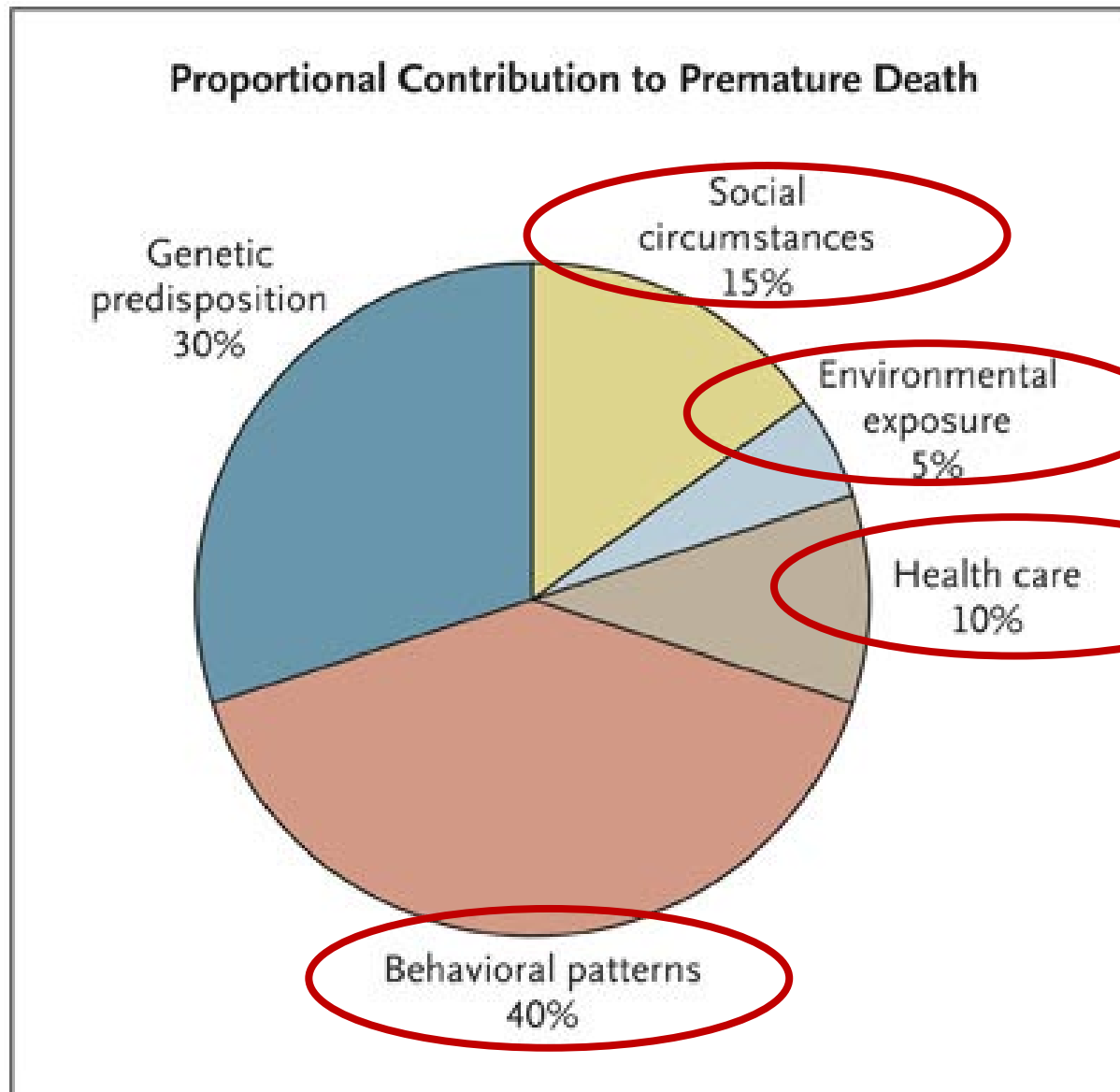


Mission: Widen the lens beyond health care & public health systems

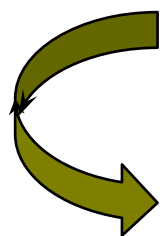
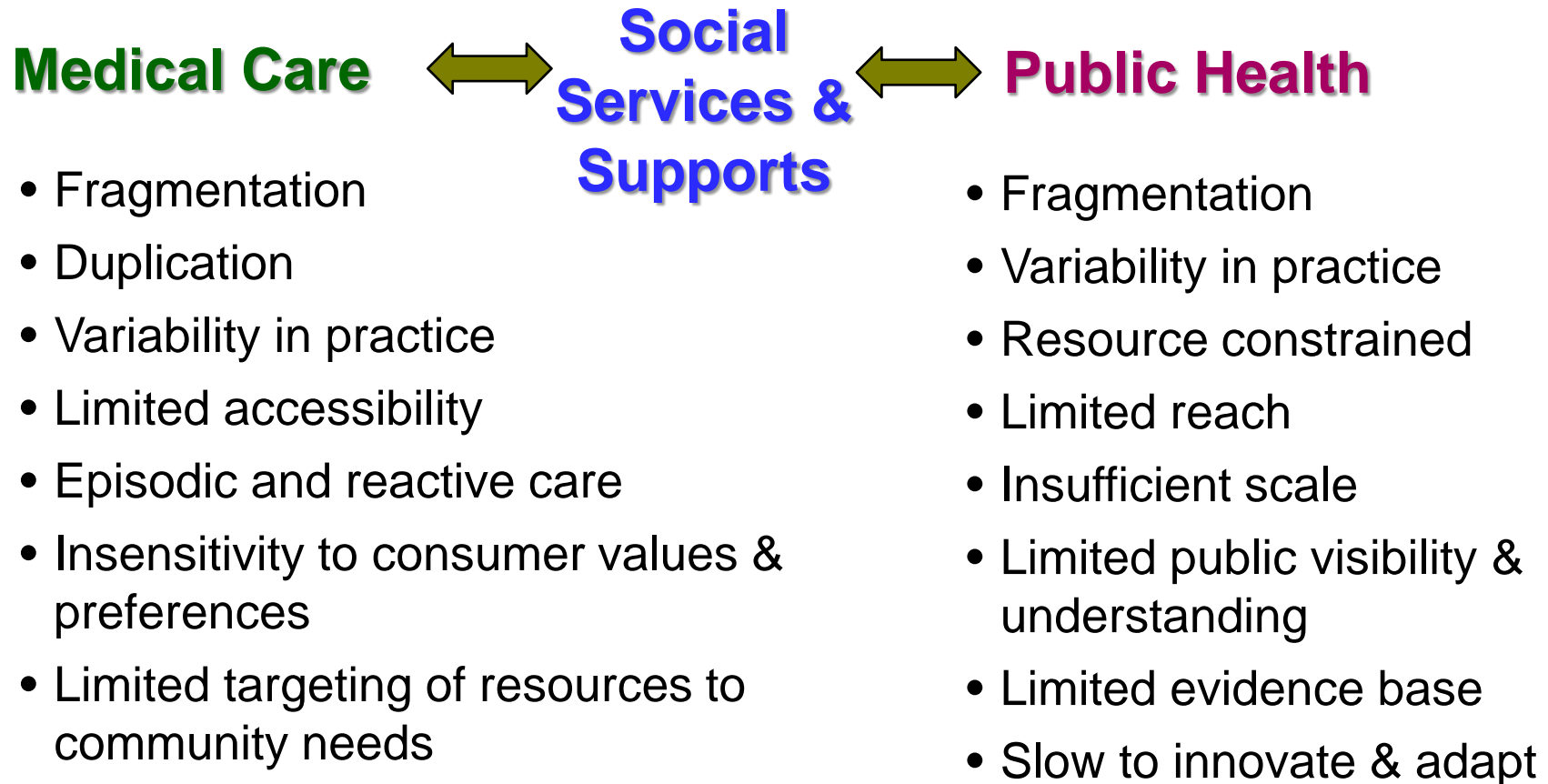
- Delivery Systems + Financing Systems
- Health Sectors + Social/Community Sectors
- Prevention + Treatment
- Health + Wellbeing
- Individuals + Populations
- Equity + Efficiency



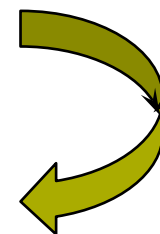
Multiple systems & sectors drive health...



...But existing systems often fail to connect

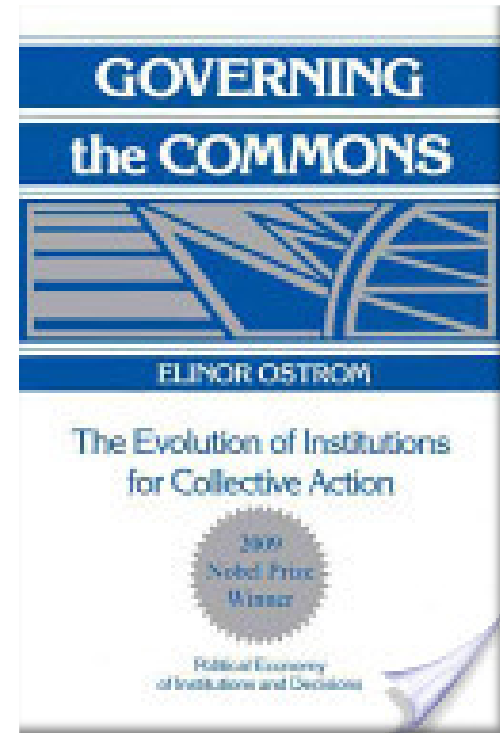


Waste & inefficiency
Inequitable outcomes
Limited population health impact



Challenge: overcoming collective action problems across systems & sectors

- Incentive compatibility → public goods
- Concentrated costs & diffuse benefits
- Time lags: costs vs. improvements
- Uncertainties about what works
- Asymmetry in information
- Difficulties measuring progress
- Weak and variable institutions & infrastructure
- Imbalance: resources vs. needs
- Stability & sustainability of funding



Wide lens: implicated sectors

- Public health
- Medical care: ACOs, PCMCs, AHCs
- Income support
- Nutrition and food security
- Education and workforce development
- Housing
- Transportation
- Criminal justice
- Child and family services
- Community development and finance



Study **novel mechanisms** for aligning systems and services across sectors

- Innovative alliances and partnerships
- Inter-governmental and public-private ventures
- New financing and payment arrangements
- Incentives for individuals, organizations & communities
- Governance and decision-making structures
- Information exchange and decision support
- New technology: m-health, tele-health
- Community engagement, public values and preferences
- Innovative workforce and staffing models
- Cross-sector planning and priority-setting

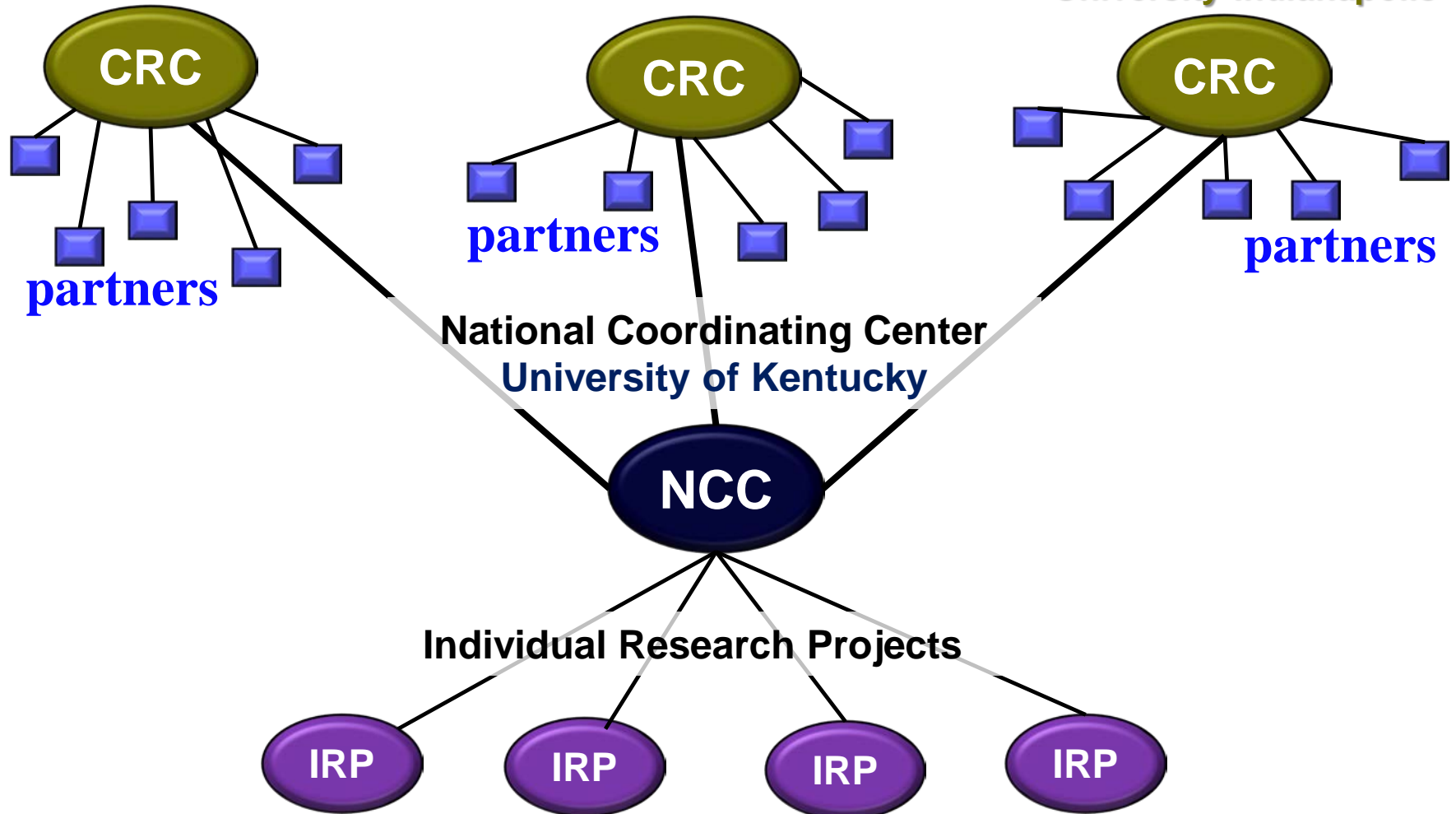
S4A Program Structure

Collaborating Research Centers

University of Chicago

Arizona State University

Indiana University – Purdue
University Indianapolis



Collaborating Research Centers

- ***University of Chicago:*** Randomized trial of a Comprehensive Care, Community and Culture program
- ***Arizona State University:*** Analysis of medical, mental health, and criminal justice system interactions for persons with behavioral health disorders
- ***IUPUI:*** Evaluating integration and decision support strategies for a community-based safety net health care and public health system
- ***University of Kentucky:*** Measuring multi-sector contributions to public health services and population health outcomes.

Individual Research Projects

- ***Michigan State University:*** Randomized trial of community complex care response teams to improve geriatric public health outcomes
- ***Los Angeles Department of Health:*** Housing for Health: estimating cross-sector impacts of providing permanent supportive housing to homeless high utilizers of health care services
- ***University of Delaware:*** Randomized trial of a multi-agency health and human services team for Delaware's Probation Population
- ***Drexel University:*** Impact of Integrating Behavioral Health with Temporary Assistance for Needy Families to Build a Culture of Health across Two-Generations

Pre-Launch Technical Advisory Committee

David A. Asch, MD, MBA

*Professor of Medicine
University of Pennsylvania*

Les Beitsch, MD, JD

*Professor, College of Medicine
Florida State University*

Bobbie Berkowitz, PhD, RN

*Dean, College of Nursing & President of the
American Academy of Nursing
Columbia University*

Kathleen Carley, PhD

*Director of the Center for Computational
Analysis of Social & Organizational Systems
Carnegie Mellon University*

Darrell Gaskins, PhD

*Deputy Director, Center for Health Disparities
Solutions
Johns Hopkins University*

Phil Huang, MD, MPH

*Local Health Official
Austin/Travis County Health & Human
Services Department*

Denise Moreno Ramírez, MS

*Community Engagement Coordinator,
Superfund Research Program
University of Arizona*

Hector Rodriguez, PhD

*Chair, Health Services & Policy Analysis Group
University of California, Berkeley*

Ana Victoria Diez Roux, MD, PhD, MPH

*Dean, School of Public Health
Drexel University*

Ken Wells, MD, MPH

*Professor of Psychiatry
UCLA Center for Health Services and Society*

National Advisory Committee

Judy Ann Bigby, MD

Mathematica Policy Research

Susan N. Dreyfus

Alliance for Strong Families and
Communities

Ian Galloway, MPP

Federal Reserve of San Francisco

Darrell Gaskin, PhD

Johns Hopkins University

Embry M. Howell, PhD, MSPH

The Urban Institute

Phil Huang, MD, MPH

*Austin/Travis County Health & Human
Services Department*

Camara Phyllis Jones, MD, MPH, PhD

Morehouse School of Medicine

Jim Scanlon, PhD

HHS/ASPE

Amy Ellen Schwartz, PhD

Syracuse University

Steve Teutsch, MD, MPH

Los Angeles County (retired)

Tracy Wareing Evans, JD

American Public Human Services
Association

For More Information

Systems for Action

National Coordinating Center

Systems and Services Research to Build a Culture of Health

Supported by The Robert Wood Johnson Foundation

Glen P. Mays, Ph.D., M.P.H.

glen.mays@uky.edu

[@GlenMays](https://twitter.com/GlenMays)

Email: systemsforaction@uky.edu

Web: www.systemsforaction.org

Twitter: [@SystemsforAction](https://twitter.com/SystemsforAction)

Journal: www.FrontiersinPHSSR.org

Blog: publichealtheconomics.org