

University of Kentucky

UKnowledge

Health Management and Policy Presentations

Health Management and Policy

4-7-2014

The Public Health PBRN Program: A Status Update

Glen P. Mays

University of Kentucky, glen.mays@cuanschutz.edu

Follow this and additional works at: https://uknowledge.uky.edu/hsm_present



Part of the [Health and Medical Administration Commons](#), and the [Health Services Research Commons](#)

[Right click to open a feedback form in a new tab to let us know how this document benefits you.](#)

Repository Citation

Mays, Glen P., "The Public Health PBRN Program: A Status Update" (2014). *Health Management and Policy Presentations*. 63.

https://uknowledge.uky.edu/hsm_present/63

This Presentation is brought to you for free and open access by the Health Management and Policy at UKnowledge. It has been accepted for inclusion in Health Management and Policy Presentations by an authorized administrator of UKnowledge. For more information, please contact UKnowledge@lsv.uky.edu.

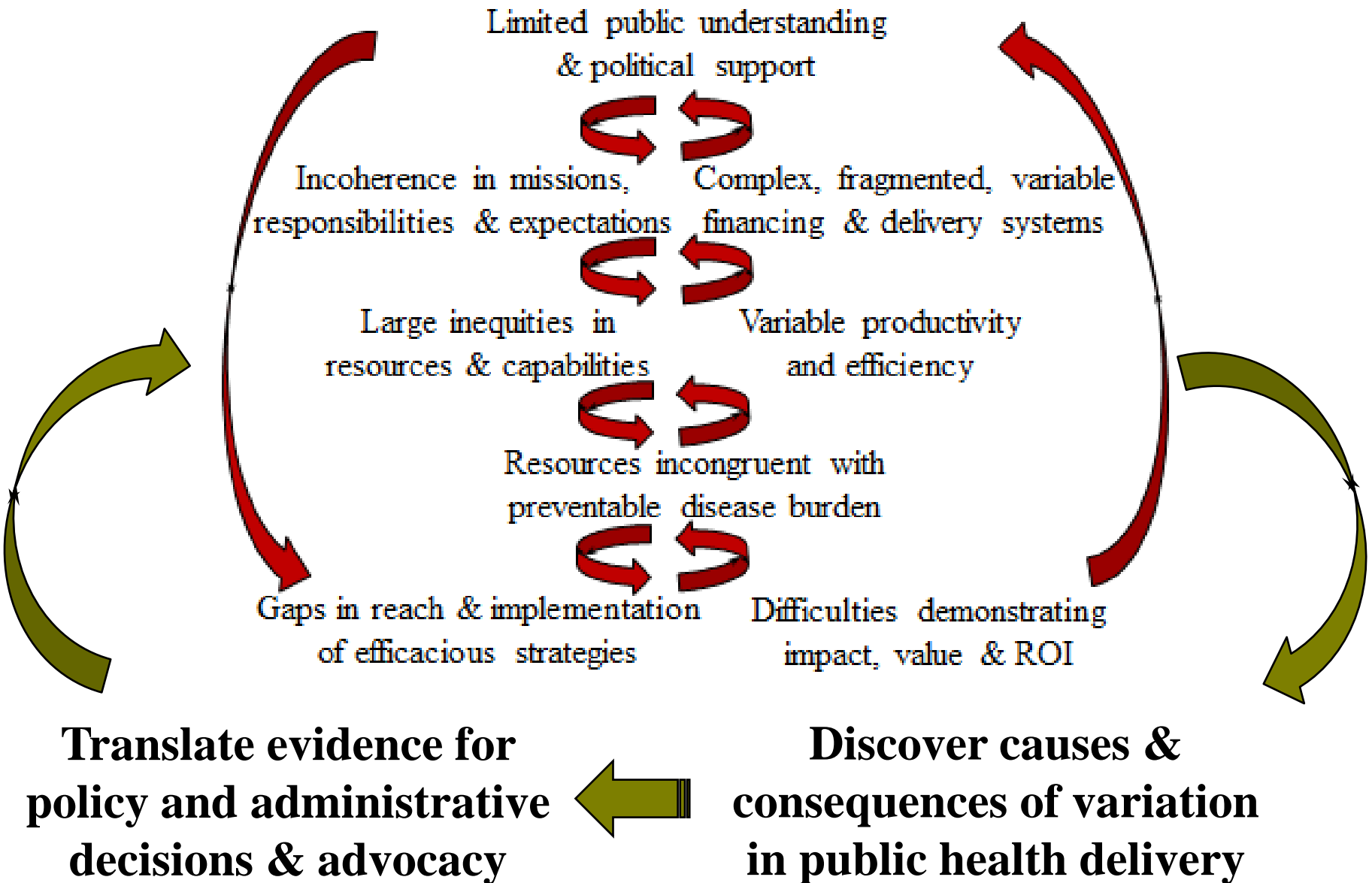
The Public Health PBRN Program: A Status Update

Glen Mays, PhD, MPH
University of Kentucky

glen.mays@uky.edu

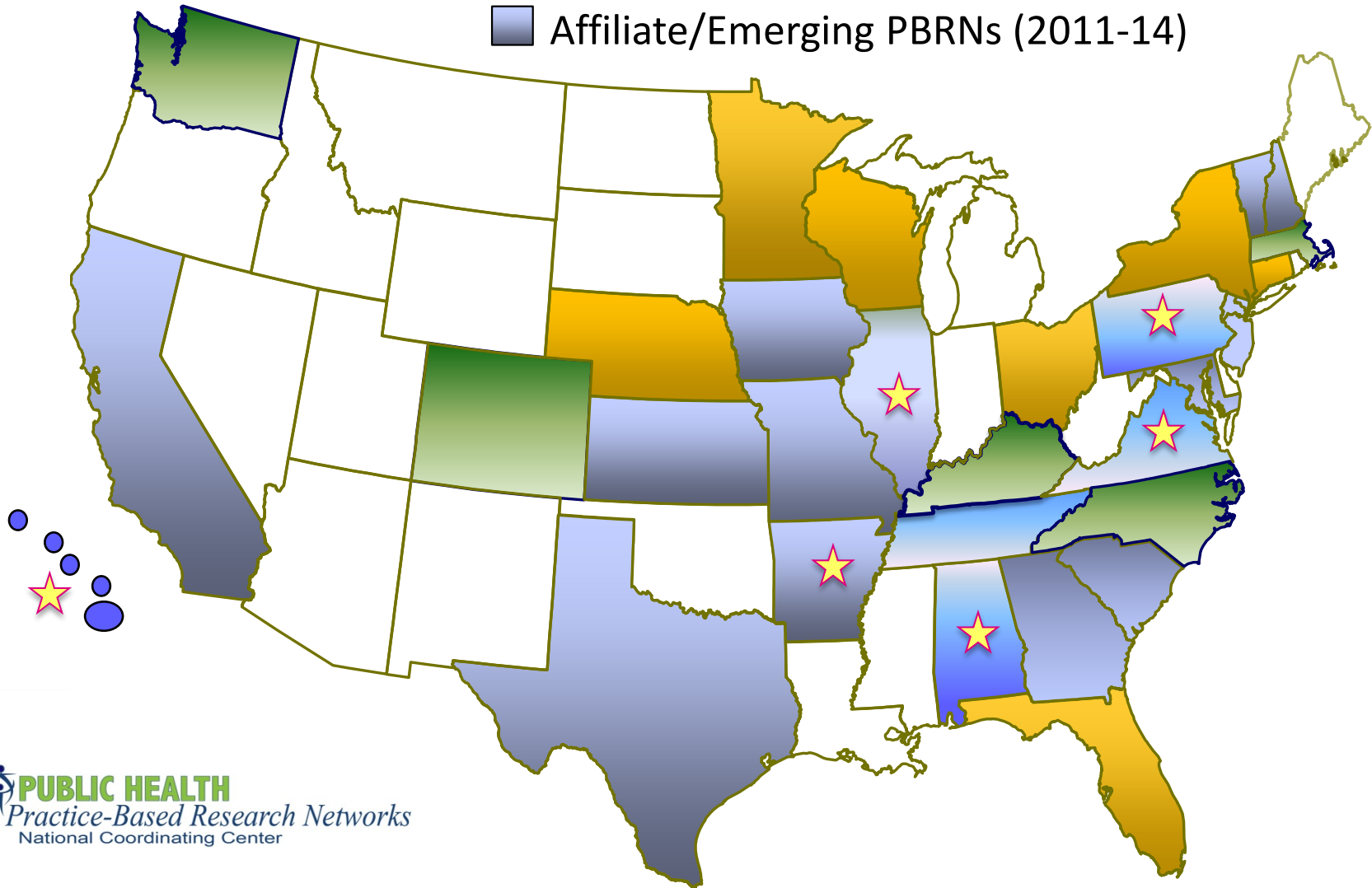
Public Health PBRN Annual Meeting • Lexington KY • 7 April 2014

Vicious cycles to learning systems

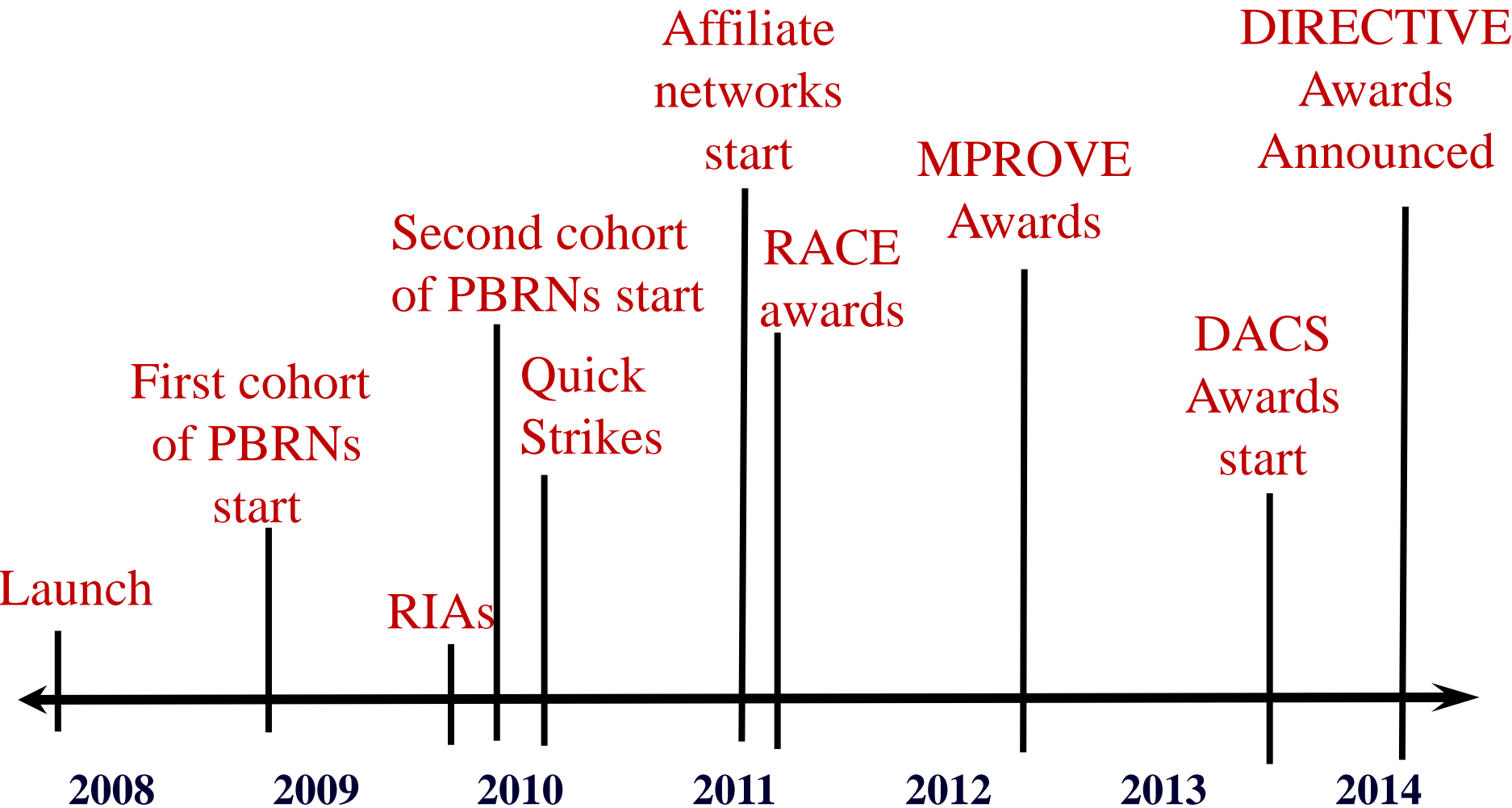


Diffusion of Public Health PBRNs

- First cohort (December 2008 start-up)
- Second cohort (January 2010 start-up)
- Affiliate/Emerging PBRNs (2011-14)



A PBRN Timeline



Research Progression

Delivery System Organization and Structure



Practice Variation



Volume, Intensity, and Quality of Delivery



Cost of Delivery



Value of Delivery

PBRN Reach

- 31 networks
- 1593 local public health agencies
- 35 state agencies
- 52 academic research units
- 58 professional & community organizations

Productivity & Dissemination

- 60 competitively awarded research projects
- 68 articles in peer-reviewed journals
- 221 presentations and conferences & meetings
- 51 reports & tools in the grey literature
- Earned media in elite venues: *Modern Healthcare, Forbes, Kaiser Health News, PBS, Men's Health*
- >15,000 downloads of *Frontiers in PHSSR* articles
- >8,000 downloads from Research Archive
- >2,000 page views on PublicHealthEconomics blog

PBRNs and Practice Engagement

Local Health Departments Engaged in Research Implementation & Translation Activities During Past 12 months

| <u>Activity</u> | PBRN Agencies | | National Sample | | |
|---|---------------------|---------|---------------------|---------|-----|
| | <u>Percent/Mean</u> | | <u>Percent/Mean</u> | | |
| Identifying research topics | 94.1% | | 27.5% | | *** |
| Planning/designing studies | 81.6% | | 15.8% | | *** |
| Recruitment, data collection & analysis | 79.6% | | 50.3% | | ** |
| Disseminating study results | 84.5% | | 36.6% | | ** |
| Applying findings in own organization | 87.4% | | 32.1% | | ** |
| Helping others apply findings | 76.5% | | 18.0% | | *** |
| Research implementation composite | 84.04 | (27.38) | 30.20 | (31.38) | ** |
| N | 209 | | 505 | | |

- Intramural research activities
 - **Public Health Value**: Cost estimation & economic evaluation
 - **Public Health Reform**: Effects of ACA on public health delivery

- Extramural research programs
 - Quick Strike studies
 - Multi-network research activities

■ Data Development

- Periodic census surveys of local and state agencies
- National Longitudinal Survey of Public Health Systems
- Tracking PH expenditures: US Census of Governments, Uniform Public Health Chart of Accounts
- Public Health Activities and Services Tracking (PHAST): compiling existing administrative data across states

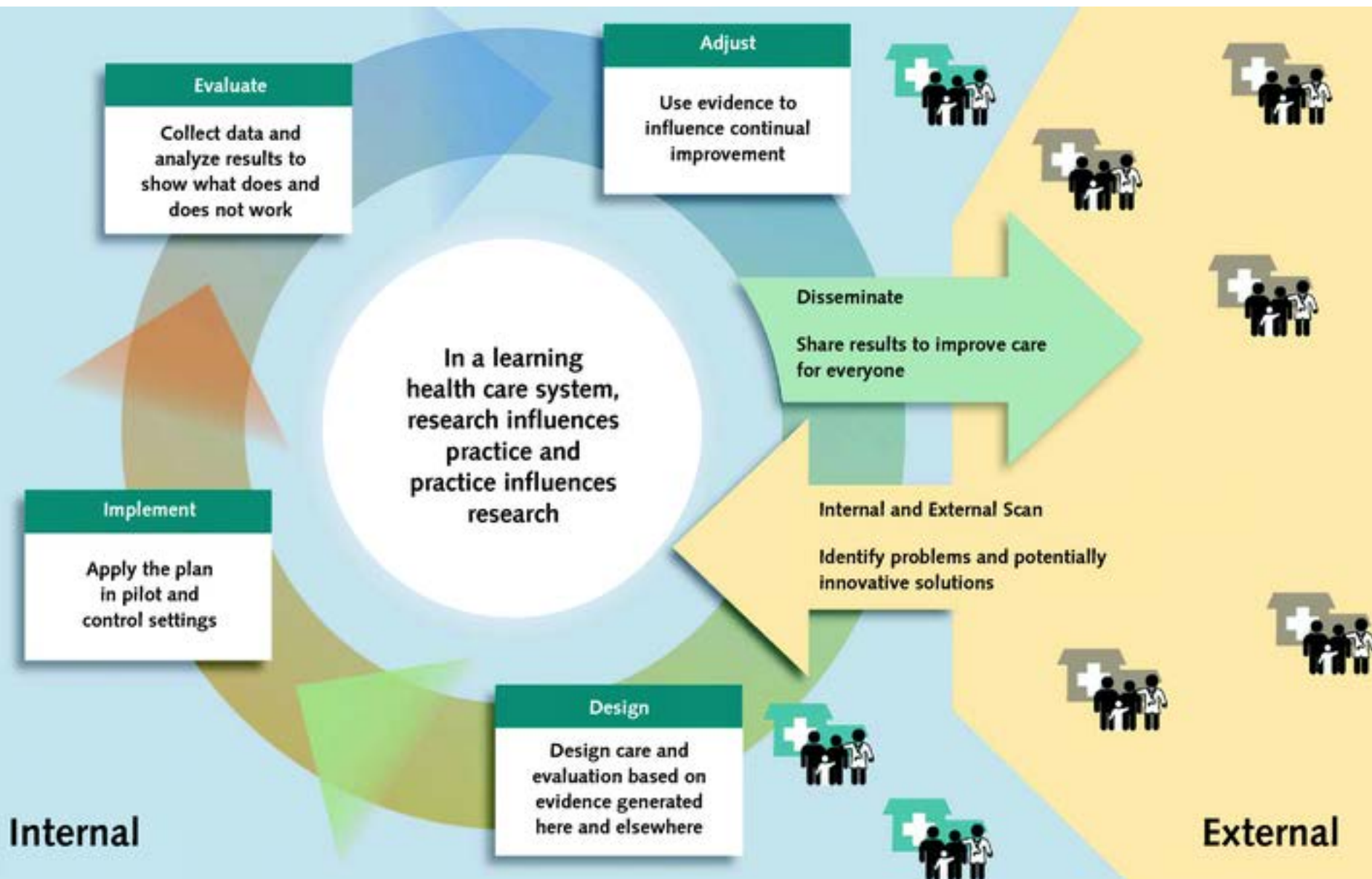
■ Dissemination & Translation

- Weekly Work in Progress Webinars
- Open-access journal: ***Frontiers in PHSSR***
- Newsletters, Podcasts, Blogs
- Briefings with policy stakeholders

Future Directions

- RWJF's *Culture of Health* strategic direction
- Population health improvement strategies
- Bridging public health and health care
- Strategies to enhance value
- Monitoring health reform implementation & impact
- Federal research funding

Toward a “rapid-learning system” in public health



For More Information



Supported by The Robert Wood Johnson Foundation

Glen P. Mays, Ph.D., M.P.H.

glen.mays@uky.edu

Email: publichealthPBRN@uky.edu

Web: www.publichealthsystems.org

Journal: www.FrontiersinPHSSR.org

Archive: works.bepress.com/glen_mays

Blog: publichealtheconomics.org

