



2003

Water Well and Spring Map of the Williamson 30 x 60 Minute Quadrangle, Kentucky

Bart Davidson

University of Kentucky, bdavidson@uky.edu

Right click to open a feedback form in a new tab to let us know how this document benefits you.

Follow this and additional works at: https://uknowledge.uky.edu/kgs_mc

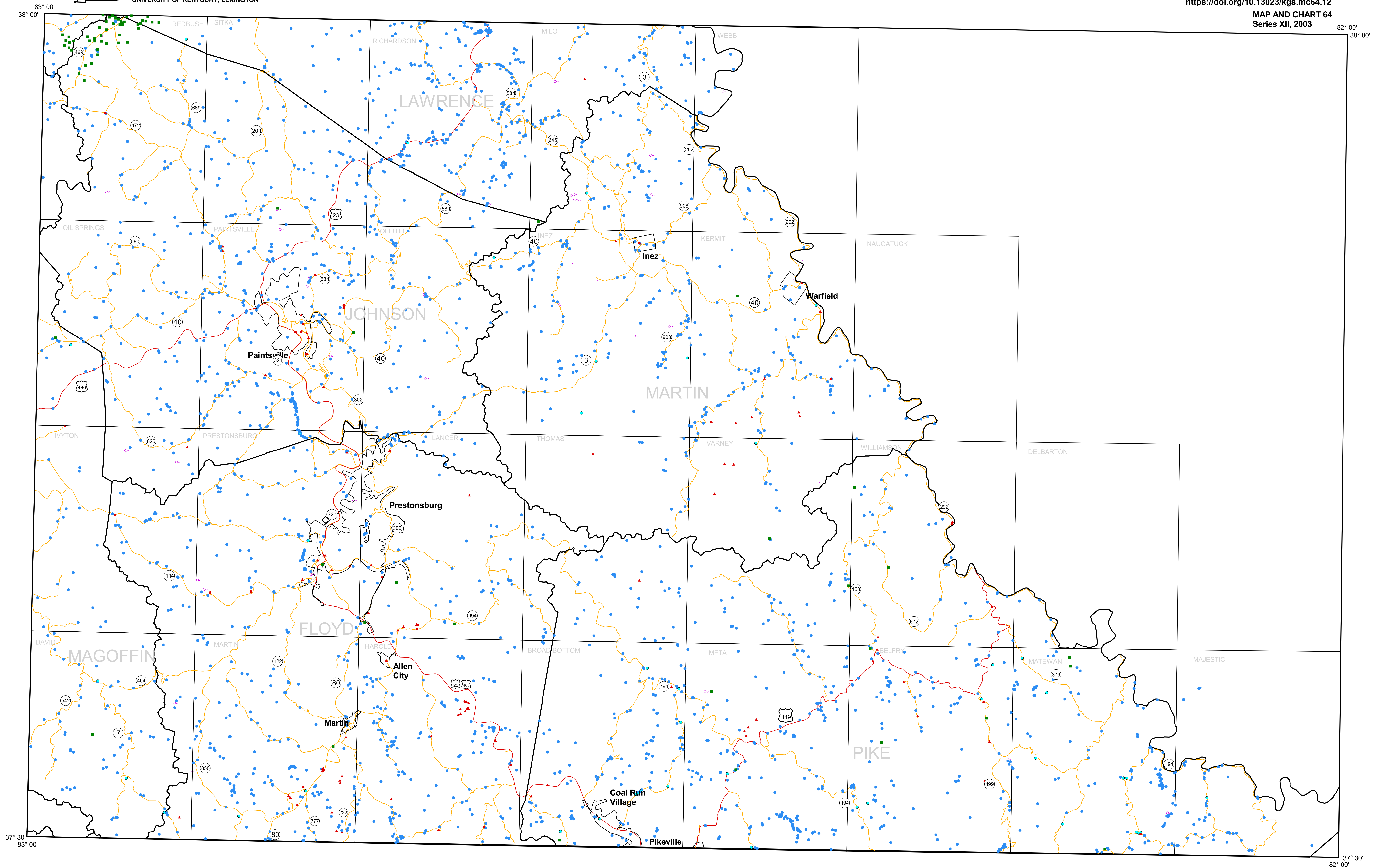
 Part of the [Geology Commons](#)

Repository Citation

Davidson, Bart, "Water Well and Spring Map of the Williamson 30 x 60 Minute Quadrangle, Kentucky" (2003). *Kentucky Geological Survey Map and Chart*. 63.

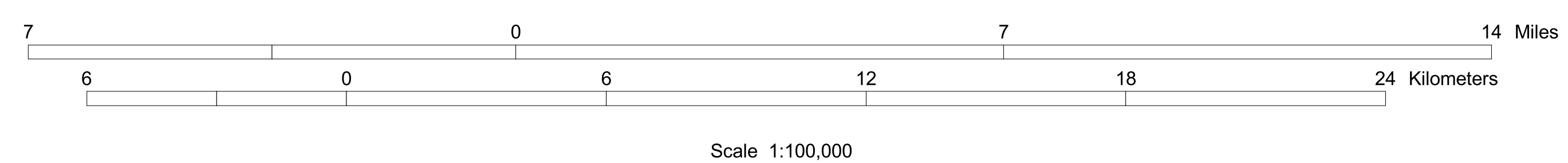
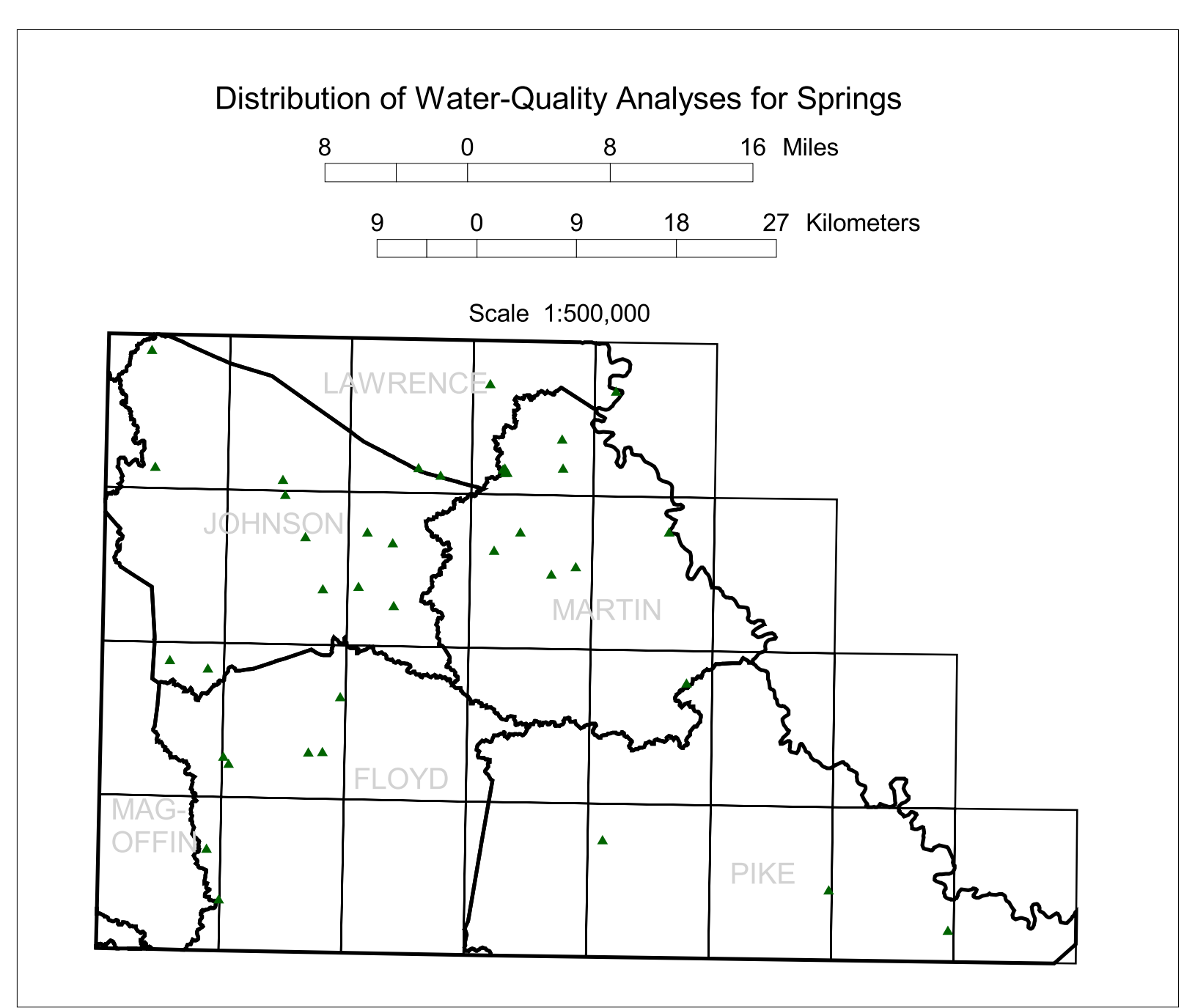
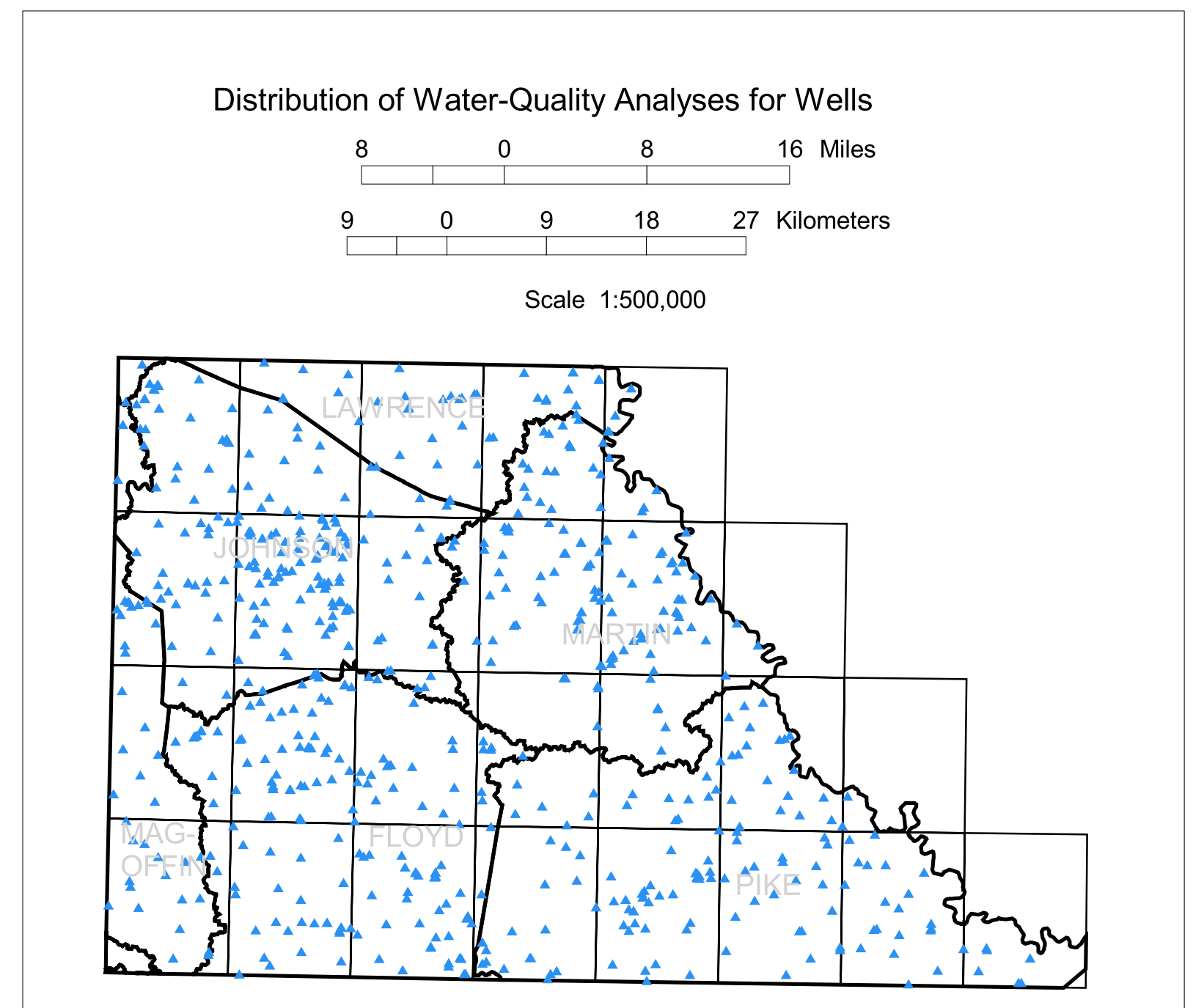
https://uknowledge.uky.edu/kgs_mc/63

This Map and Chart is brought to you for free and open access by the Kentucky Geological Survey at UKnowledge. It has been accepted for inclusion in Kentucky Geological Survey Map and Chart by an authorized administrator of UKnowledge. For more information, please contact UKnowledge@lsv.uky.edu.

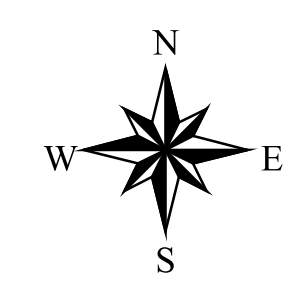
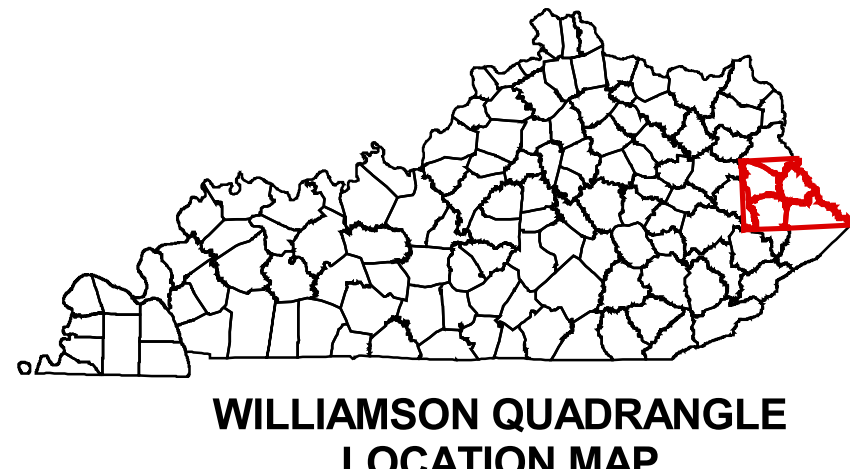


WATER WELL AND SPRING MAP OF THE WILLIAMSON 30 x 60 MINUTE QUADRANGLE, KENTUCKY

Compiled by Bart Davidson



- Type of well
- Domestic (private)
- Industrial
- ▲ Monitoring
- Public
- Spring location
- U.S. roads
- State roads
- USGS 7.5-minute quadrangles



Data for this map were compiled from the Kentucky Groundwater Data Repository. This map represents only information contained in the repository, and may not be representative of all wells or springs in the area. Water wells did not have to be registered with the State prior to 1985. This map was produced using the digital line graph (DLG) base map (1:100,000 scale, universal transverse Mercator, zone 16) available from the U.S. Geological Survey. Digital water-well, spring and dye-trace data, and karst groundwater basin maps are available from the repository at the Kentucky Geological Survey, 228 Mining and Mineral Resources Building, University of Kentucky, phone 859.257.5500 x162. This map is available online at www.uky.edu/kgs.