



2003

Water Well and Spring Map of the Madisonville 30 x 60 Minute Quadrangle, Kentucky

Bart Davidson

University of Kentucky, bdavidson@uky.edu

Right click to open a feedback form in a new tab to let us know how this document benefits you.

Follow this and additional works at: https://uknowledge.uky.edu/kgs_mc

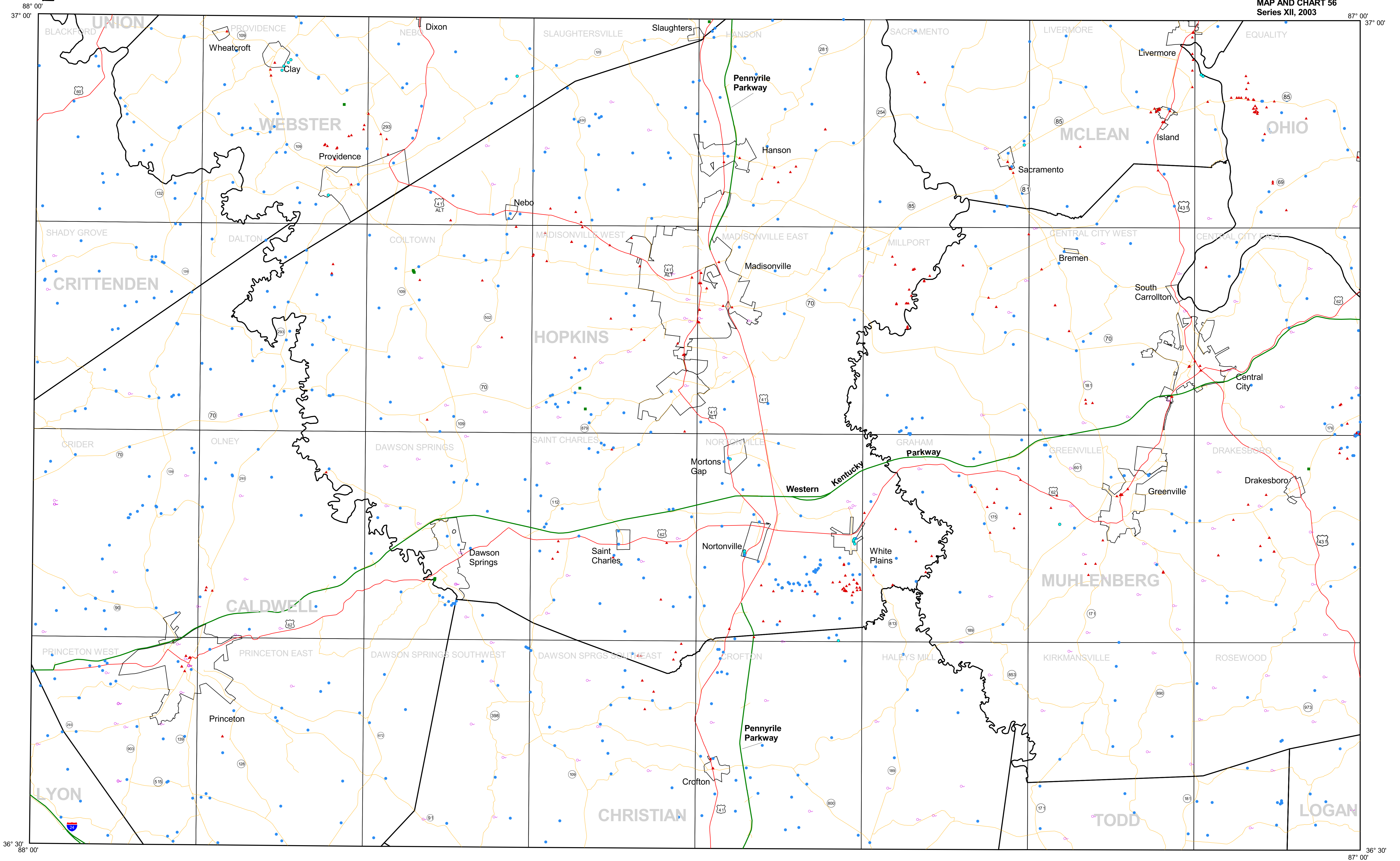
 Part of the [Geology Commons](#)

Repository Citation

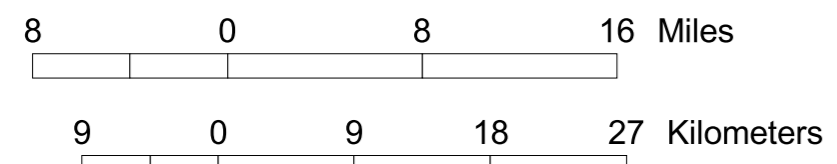
Davidson, Bart, "Water Well and Spring Map of the Madisonville 30 x 60 Minute Quadrangle, Kentucky" (2003). *Kentucky Geological Survey Map and Chart*. 55.

https://uknowledge.uky.edu/kgs_mc/55

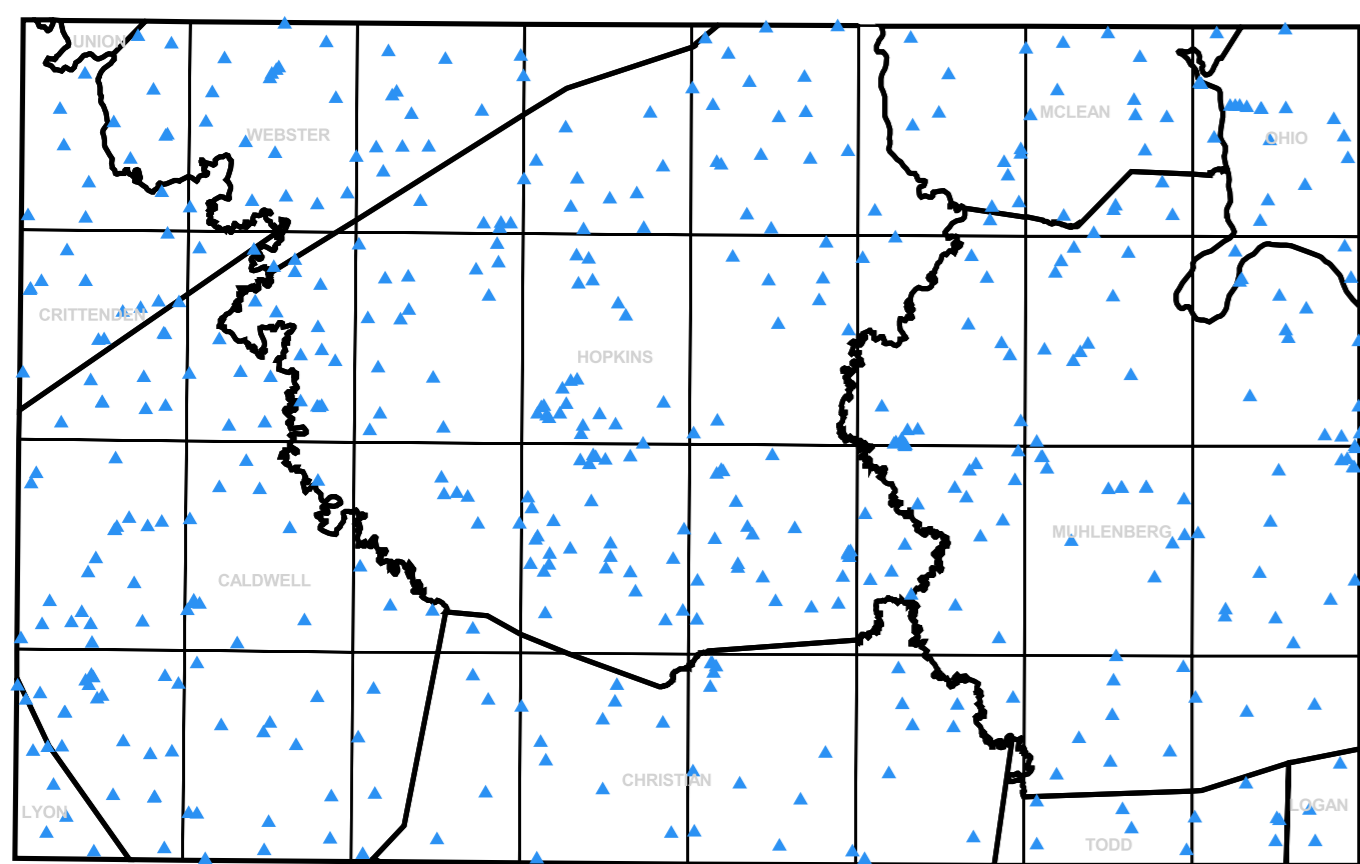
This Map and Chart is brought to you for free and open access by the Kentucky Geological Survey at UKnowledge. It has been accepted for inclusion in Kentucky Geological Survey Map and Chart by an authorized administrator of UKnowledge. For more information, please contact UKnowledge@lsv.uky.edu.



Distribution of Water-Quality Analyses for Wells

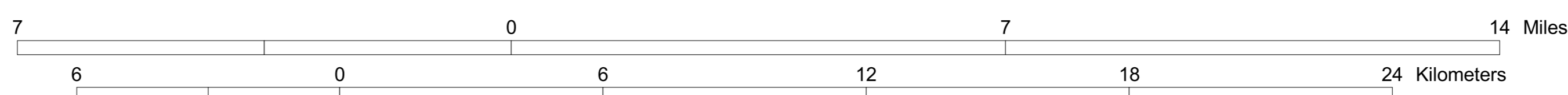


Scale 1:500,000



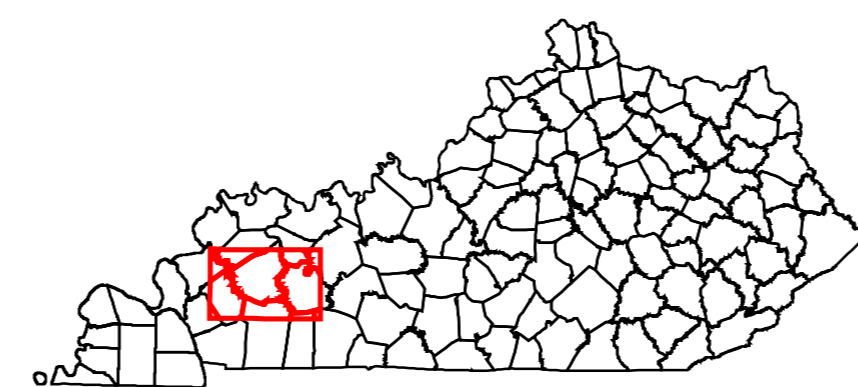
WATER WELL AND SPRING MAP OF THE MADISONVILLE 30 x 60 MINUTE QUADRANGLE, KENTUCKY

Compiled by Bart Davidson

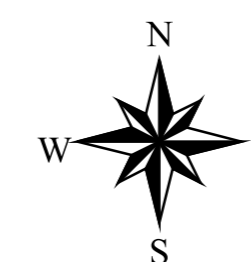


Scale 1:100,000

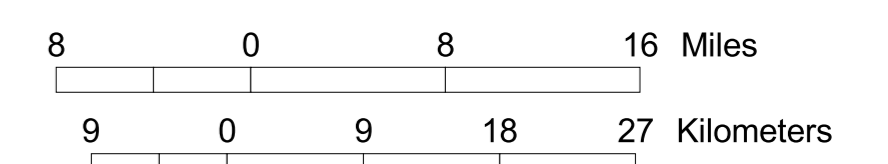
- Type of well
- Domestic (Private)
- Industrial
- Monitoring
- Public
- Spring location
- Parkway and Interstates
- U.S. roads
- State roads
- USGS 7.5-minute quadrangles



MADISONVILLE QUADRANGLE LOCATION MAP



Distribution of Water-Quality Analyses for Springs



Scale 1:500,000

