



6-30-2021

## Analysis of Genetic Variants Associated with Levels of Immune Modulating Proteins for Impact on Alzheimer's Disease Risk Reveal a Potential Role for SIGLEC14

Benjamin C. Shaw

University of Kentucky, [benjamin.shaw@uky.edu](mailto:benjamin.shaw@uky.edu)

Yuriko Katsumata

University of Kentucky, [katsumata.yuriko@uky.edu](mailto:katsumata.yuriko@uky.edu)

James F. Simpson

University of Kentucky, [jfsimp01@uky.edu](mailto:jfsimp01@uky.edu)

David W. Fardo

University of Kentucky, [david.fardo@uky.edu](mailto:david.fardo@uky.edu)

Steven Estus

University of Kentucky, [steve.estus@uky.edu](mailto:steve.estus@uky.edu)

Follow this and additional works at: [https://uknowledge.uky.edu/biostatistics\\_facpub](https://uknowledge.uky.edu/biostatistics_facpub)



Part of the [Biostatistics Commons](#), [Geriatrics Commons](#), and the [Medical Physiology Commons](#)

[Right click to open a feedback form in a new tab to let us know how this document benefits you.](#)

---

### Repository Citation

Shaw, Benjamin C.; Katsumata, Yuriko; Simpson, James F.; Fardo, David W.; and Estus, Steven, "Analysis of Genetic Variants Associated with Levels of Immune Modulating Proteins for Impact on Alzheimer's Disease Risk Reveal a Potential Role for SIGLEC14" (2021). *Biostatistics Faculty Publications*. 53. [https://uknowledge.uky.edu/biostatistics\\_facpub/53](https://uknowledge.uky.edu/biostatistics_facpub/53)

This Article is brought to you for free and open access by the Biostatistics at UKnowledge. It has been accepted for inclusion in Biostatistics Faculty Publications by an authorized administrator of UKnowledge. For more information, please contact [UKnowledge@lsv.uky.edu](mailto:UKnowledge@lsv.uky.edu).

---

# Analysis of Genetic Variants Associated with Levels of Immune Modulating Proteins for Impact on Alzheimer's Disease Risk Reveal a Potential Role for SIGLEC14

Digital Object Identifier (DOI)

<https://doi.org/10.3390/genes12071008>

## Notes/Citation Information

Published in *Genes*, v. 12, issue 7, 1008.

© 2021 by the authors. Licensee MDPI, Basel, Switzerland.

This article is an open access article distributed under the terms and conditions of the Creative Commons Attribution (CC BY) license (<https://creativecommons.org/licenses/by/4.0/>).

Article

# Analysis of Genetic Variants Associated with Levels of Immune Modulating Proteins for Impact on Alzheimer's Disease Risk Reveal a Potential Role for SIGLEC14

Benjamin C. Shaw <sup>1,2</sup>, Yuriko Katsumata <sup>3</sup>, James F. Simpson <sup>1,2</sup>, David W. Fardo <sup>2,3</sup>  and Steven Estus <sup>1,2,\*</sup>

<sup>1</sup> Department of Physiology, University of Kentucky, Lexington, KY 40506, USA; benjamin.shaw@uky.edu (B.C.S.); jfsimp01@uky.edu (J.F.S.)

<sup>2</sup> Sanders-Brown Center on Aging, University of Kentucky, Lexington, KY 40506, USA; david.fardo@uky.edu

<sup>3</sup> Department of Biostatistics, University of Kentucky, Lexington, KY 40506, USA; katsumata.yuriko@uky.edu

\* Correspondence: steve.estus@uky.edu; Tel.: +1-859-218-2388

**Abstract:** Genome-wide association studies (GWAS) have identified immune-related genes as risk factors for Alzheimer's disease (AD), including *TREM2* and *CD33*, frequently passing a stringent false-discovery rate. These genes either encode or signal through immunomodulatory tyrosine-phosphorylated inhibitory motifs (ITIMs) or activation motifs (ITAMs) and govern processes critical to AD pathology, such as inflammation and amyloid phagocytosis. To investigate whether additional ITIM and ITAM-containing family members may contribute to AD risk and be overlooked due to the stringent multiple testing in GWAS, we combined protein quantitative trait loci (pQTL) data from a recent plasma proteomics study with AD associations in a recent GWAS. We found that pQTLs for genes encoding ITIM/ITAM family members were more frequently associated with AD than those for non-ITIM/ITAM genes. Further testing of one family member, *SIGLEC14* which encodes an ITAM, uncovered substantial copy number variations, identified an SNP as a proxy for gene deletion, and found that gene expression correlates significantly with gene deletion. We also found that *SIGLEC14* deletion increases the expression of *SIGLEC5*, an ITIM. We conclude that many genes in this ITIM/ITAM family likely impact AD risk, and that complex genetics including copy number variation, opposing function of encoded proteins, and coupled gene expression may mask these AD risk associations at the genome-wide level.

**Keywords:** ITIM; ITAM; *SIGLEC14*; *SIGLEC5*; copy number variation; CNV; GWAS



**Citation:** Shaw, B.C.; Katsumata, Y.; Simpson, J.F.; Fardo, D.W.; Estus, S. Analysis of Genetic Variants Associated with Levels of Immune Modulating Proteins for Impact on Alzheimer's Disease Risk Reveal a Potential Role for SIGLEC14. *Genes* **2021**, *12*, 1008. <https://doi.org/10.3390/genes12071008>

Academic Editors: Laura Ibanez and Justin Miller

Received: 19 May 2021  
Accepted: 25 June 2021  
Published: 30 June 2021

**Publisher's Note:** MDPI stays neutral with regard to jurisdictional claims in published maps and institutional affiliations.



**Copyright:** © 2021 by the authors. Licensee MDPI, Basel, Switzerland. This article is an open access article distributed under the terms and conditions of the Creative Commons Attribution (CC BY) license (<https://creativecommons.org/licenses/by/4.0/>).

## 1. Introduction

Genome-wide association studies (GWAS) have identified a set of polymorphisms that modulate the risk of Alzheimer's disease (AD) [1–6]. The pathways implicated in this process include innate immunity, cholesterol homeostasis, and protein trafficking [7–9]. Four of these genes, *TREM2*, *CD33*, *PILRA*, and *FCER1G*, are members of the family of non-catalytic tyrosine-phosphorylated receptors (NTRs), which function through immunomodulatory tyrosine-phosphorylated activating motifs (ITAMs) or inhibitory motifs (ITIMs). The underlying immunomodulatory pathway is further implicated by AD-associated variants in phospholipase C (*PLCG2*) and *INPP5D* which encode proteins acting downstream of these ITAM- and ITIM-containing proteins. Functional studies have informed the current hypothesis that the variants associated with AD in the ITAM/ITIM family modulate inflammation and phagocytosis [10–18].

The ITAM family, including *TREM2*, recruit kinases such as spleen tyrosine kinase (Syk) and phosphoinositide 3-kinase (PI3K) to induce downstream signaling, while the ITIM family, including *CD33*, recruit phosphatases such as SHP-1 to dephosphorylate Syk and ITAMs, thereby counteracting ITAM activity [19]. These ITAM and ITIM proteins are predominantly expressed in immune cells such as microglia. Overall, these and other

studies have shown that microglia contribute to AD pathogenesis, a concept that has been reviewed recently [20–22].

The critical barrier to progress in translating GWAS candidate genes to treatments is elucidating the actions of the functional variant at the molecular level, i.e., splicing (sQTL), gene expression (eQTL), or protein level (pQTL), to understand whether the pathway affected is detrimental or beneficial to disease risk. GWAS single nucleotide polymorphisms (SNPs) in AD are frequently identified as eQTLs in the brain [23]. Sun et al. have used GWAS to identify pQTLs for the plasma proteome, including ITIM and ITAM-containing proteins [24]. To investigate the hypothesis that these pQTLs may uncover additional AD-related genes that may have been overlooked in AD GWAS because of their stringent false-discovery rate controls, we examined the Sun et al. cis-pQTL data together with the Jansen et al. AD GWAS results. Parsing the proteins from the genome-wide significant cis-pQTL dataset by whether or not an ITIM/ITAM domain was present, and then examining whether the associated SNP is nominally significant ( $p < 0.05$ ) for AD association, found a significant overrepresentation of ITIM/ITAM encoding genes with nominal AD associations. Since one of these genes, *SIGLEC14*, has been reported to be deleted in some individuals, we investigated further and found that the pQTL and AD SNP, rs1106476, is a proxy for the previously identified deletion polymorphism [25]. We defined this deletion further by identifying additional *SIGLEC14* copy number variants and by determining the effect of *SIGLEC14* copy number on the expression of *SIGLEC14* and the neighboring *SIGLEC5*. We conclude that variants in ITIM/ITAM family members, including *SIGLEC14*, represent underappreciated potential genetic risk factors for AD.

## 2. Materials and Methods

### 2.1. Preparation of gDNA, RNA, and cDNA from Human Tissue

Human blood and anterior cingulate autopsy tissue from 61 donors were generously provided by the Sanders-Brown Alzheimer's disease center neuropathology core and have been described elsewhere [26]. The matched brain and blood samples were from deceased individuals with an average age at death of  $82.4 \pm 8.7$  (mean  $\pm$  SD) years for non-AD and  $81.7 \pm 6.2$  years for AD subjects. The average postmortem interval (PMI) for non-AD and AD subjects was  $2.8 \pm 0.8$  and  $3.4 \pm 0.6$  h, respectively. Non-AD and AD samples were comprised of 48% and 55% female subjects. MMSE scores were, on average,  $28.4 \pm 1.6$  for non-AD subjects and  $11.9 \pm 8.0$  for AD subjects. These samples were used for genotyping and gene expression studies. Three additional blood samples matched to whole-genome sequencing (WGS) data were obtained to confirm WGS observations of additional *SIGLEC14* copies. DNA from these patients was prepared using a QIAamp DNA Blood Mini kit (Qiagen, Germantown, MD, USA) per the manufacturer's instructions.

### 2.2. Genotyping and Copy Number Variant Assays

Copy number variation in *SIGLEC14* was determined using a TaqMan-based copy number variant (CNV) assay (Invitrogen, Waltham, MA, USA; Catalog number 4400291, Assay number Hs03319513\_cn) compared to *RNase P* (Invitrogen, 4403326). Amplification and quantitation were performed per manufacturer instructions. Genotyping the rs1106476 was performed with a custom TaqMan assay (Invitrogen). This assay discriminates rs1106476 and rs872629, which are in perfect LD. As coinherited SNPs, this variant is also known as rs35495434.

### 2.3. Gene Expression by qPCR

Gene expression was quantified by qPCR with PerfeCTa SYBR Green master mix as previously described [14]. *SIGLEC14* was quantified with primers corresponding to a sequence in exons 3 and 5: 5'—CAGGTGAAACGCCAAGGAG—3' and 5'—GCGAGGAACAGGGA CTGG—3'. *SIGLEC5* was quantified with primers corresponding to sequences in exons 4 and 5: 5'—ACCATCTTCAGGAACGGCAT—3' and 5'—GGGAGCATCACAGAGCAGC—3'. Cycling conditions for all qPCRs were as follows: 95 °C, 2 min; 95 °C, 15 s, 60 °C, 15 s,

72 °C, 30 s, 40 cycles. Copy numbers present in the cDNA were determined relative to standard curves that were executed in parallel [19].

#### 2.4. WGS Data Analysis

To investigate the frequency and range of *SIGLEC14* CNV, we performed a read-depth analysis for WGS data. We obtained compressed sequence alignment map (CRAM) files from the AD sequencing project (ADSP) and AD Neuroimaging (ADNI). We extracted paired-end reads mapped to the *SIGLEC14-SIGLEC5* locus under Genome Reference Consortium Human Build 38 (GRCh38/hg38), and then computed the depth at each position using the samtools depth function [27].

#### 2.5. Statistical Analyses

The association of cis-pQTL proteins containing ITIM/ITAM domains and AD-associated SNPs was calculated using a simple chi-square test. Gene expression was analyzed by using JMP14 Pro using one-way analysis of variance (ANOVA) followed by Tukey's post-hoc multiple testing correction and graphed in GraphPad Prism 8.

### 3. Results

#### 3.1. ITIM/ITAM pQTLs Are Overrepresented in AD GWAS Results

To evaluate whether pQTLs for ITIM or ITAM-containing proteins were associated with AD, we compiled a list of ITIM and ITAM-containing proteins from prior reviews [28–31]. The resulting list contained 187 genes and is provided as Supplemental Table S1. The cis-acting pQTLs from Sun et al. and AD associations from Jansen et al. were then matched by chromosomal coordinates [2,24]. Both datasets were provided under Genome Reference Consortium Human Build 37 (GRCh37/hg19). Genes were then subset as either coding for an ITIM/ITAM gene or not and nominally significant ( $p < 0.05$ ) for AD association or not. The SNPs which are associated with both ITIM/ITAM protein levels in plasma and AD risk are shown in Table 1. We found that pQTLs that affect ITIM or ITAM genes were significantly overrepresented in nominally significant AD associations ( $p = 6.51 \times 10^{-5}$ ,  $\chi^2_1 = 15.95$ , Table 2).

**Table 1.** Genes that are nominally significant for AD association with strong pQTL signal.

Gene	SNP	P (pQTL)	$\beta$ (pQTL)	P (AD)	$\beta$ (AD)	N (AD)	ITIM/ITAM
CD33	rs12459419	0 <sup>†</sup>	−0.94	$7.13 \times 10^{-9}$	−0.01330	458,744	ITIM
FCGR3B	rs10919543	$3.20 \times 10^{-67}$	0.44	0.000317	0.00806	445,293	ITAM
LILRA5	rs759819	$2.50 \times 10^{-111}$	−0.54	0.00186	0.00717	454,216	ITAM
LILRB2	rs373032	$7.60 \times 10^{-146}$	−0.72	0.00227	0.00763	463,880	ITIM
SIGLEC9	rs2075803	0 <sup>†</sup>	−1.23	0.00703	0.00576	466,252	ITIM
SIRPB1	rs3848788	$1.20 \times 10^{-213}$	0.75	0.00942	0.00582	458,092	ITAM
COLEC12	rs2846667	$9.30 \times 10^{-12}$	0.20	0.0177	0.00586	449,987	ITAM
FCRL1	rs4971155	$6.30 \times 10^{-26}$	−0.26	0.0197	−0.00520	403,829	ITAM
NCR1	rs2278428	$1.10 \times 10^{-15}$	−0.36	0.0249	0.00815	466,252	ITAM
SIGLEC14	rs1106476	0 <sup>†</sup>	−1.19	0.0284	0.00736	458,063	ITAM
FCRL3	rs7528684	$1.40 \times 10^{-112}$	0.53	0.04	−0.00434	458,744	Both
MRC2	rs146385050	$1.30 \times 10^{-11}$	−0.22	0.041	−0.00612	396,686	ITAM
SLAMF6	rs11291564	$2.60 \times 10^{-12}$	0.20	0.042	−0.02450	17,477	ITAM

† The  $p$ -value in the analyzed summary statistics was reported as exactly 0. This does not impact our analysis, as our threshold was any cis-pQTL at  $p < 0.05$ .

**Table 2.** Overlap of pQTL and AD signals.

pQTLs	ITIM/ITAM (%)	Not ITIM/ITAM (%)	Total
AD $p < 0.05$	13 (28)	54 (10)	67
AD $p > 0.05$	34 (72)	488 (90)	522
<b>Total</b>	<b>47 (100)</b>	<b>542 (100)</b>	<b>589</b>

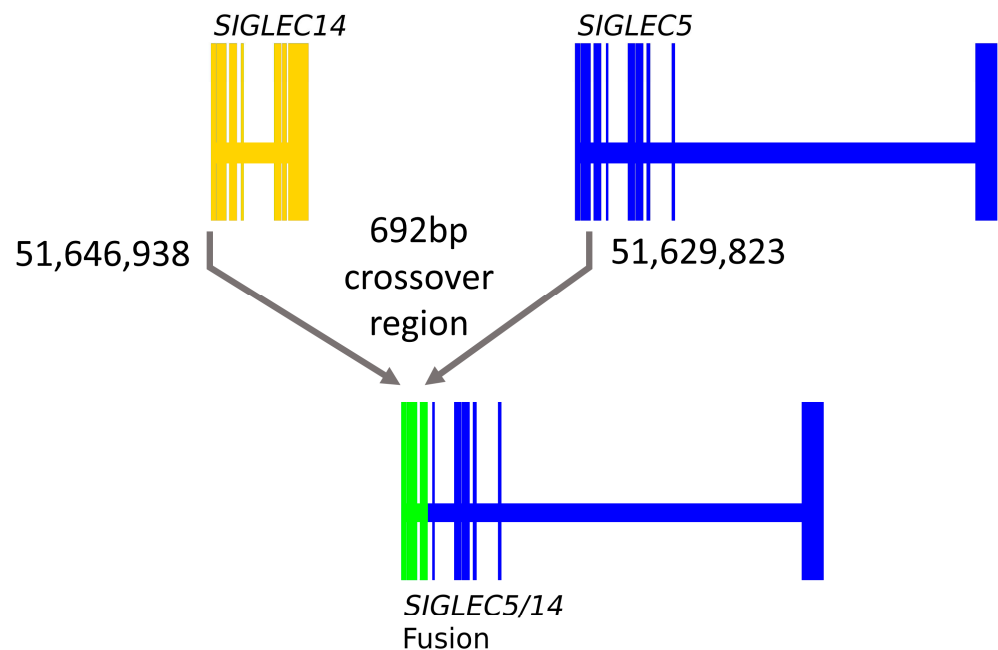
### 3.2. *SIGLEC14* pQTL Is a Proxy for the Deletion Polymorphism

Previous reports have identified a *SIGLEC14* deletion [25]. Given the strong pQTL signal from rs1106476 on *SIGLEC14* reported by Sun et al., and the fact that rs1106476 is within the neighboring *SIGLEC5* gene, yet has a cis-pQTL effect on *SIGLEC14*, we hypothesized that rs1106476 is a proxy for the *SIGLEC14* deletion polymorphism. To test this hypothesis, we genotyped a set of DNA samples for rs1106476 and quantified genomic copy number variation (CNV). We found that the proxy SNP correlates with *SIGLEC14* deletion well but not perfectly ( $p < 0.0001$ ,  $\chi^2 = 38.40$ ) (Table 3). To better understand this deletion, we then sequenced the region containing the *SIGLEC14*-*SIGLEC5* fusion in five minor allele carriers (two homozygous for *SIGLEC14* deletion and three heterozygous) [25]. Based on these sequencing data, relative to reference sequences, we found a 692 bp region of complete identity between *SIGLEC14* and *SIGLEC5*. Within this region, the deletion polymorphism sequence corresponds to *SIGLEC14* at the 5' end, but *SIGLEC5* on the 3' end, with respect to reference sequence data (Figure 1). Overall, this represents a 17 kb deletion.

**Table 3.** Evaluation of rs1106476 as a proxy for *SIGLEC14* deletion.

<i>SIGLEC14</i> Copies	rs1106476 T/T	rs1106476 A/T	rs1106476 A/A	Total
0	0	1	1	2
1	6	13	0	19
2	39	0	0	39
3	2	2	0	4
Total	47	16	1	64

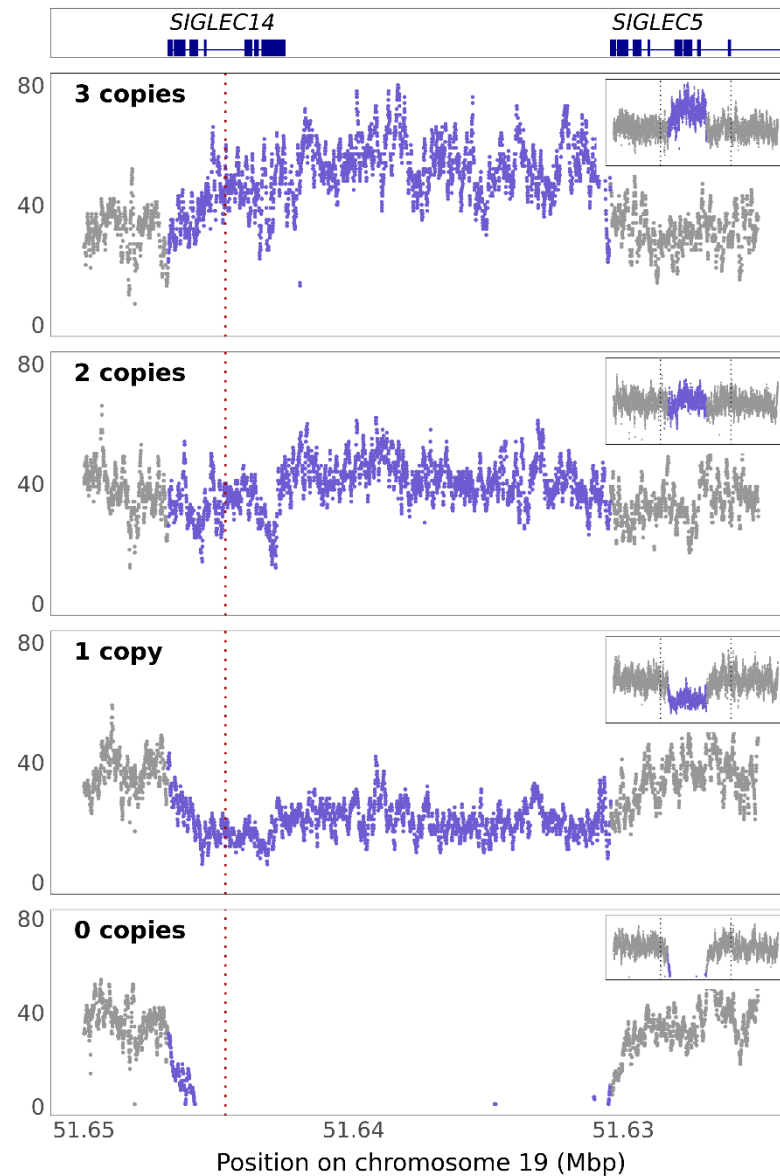
Blue = predicted correlation of *SIGLEC14* deletion vs. rs1106476. Each cell represents the number of DNA samples with the indicated *SIGLEC14* copy number and rs1106476 genotype.



**Figure 1.** Identification of the *SIGLEC14* deletion site. Coordinates in both are for reference genome. Exons 1-3 of *SIGLEC14* and *SIGLEC5* are identical which confounds exact determination of the crossover event. The yellow region depicts *SIGLEC14*, the blue region depicts *SIGLEC5*, while the green region depicts the 692 bp region of complete identity where the crossover deletion occurs.

### 3.3. *SIGLEC14* CNV Is Not Fully Captured by *rs1106476*

As noted in Table 3, we found some individuals that had three copies of *SIGLEC14* as detected by the CNV assay. To validate these findings, we leveraged the ADNI and ADSP WGS datasets and compared read depth in the *SIGLEC14* locus with surrounding sequences (Figure 2). Both datasets contained individuals with *SIGLEC14* copy numbers ranging from 0–3. The presence of three copies of *SIGLEC14* was cross-validated between WGS data and CNV assay in three individuals. Further, the frequencies across populations are equivalent (Table 4;  $p = 6.76 \times 10^{-12}$ ,  $\chi^2 = 69.30$ ). Read depths for Caucasian, African American, and other populations are shown as Supplemental Figures S1–S3.



**Figure 2.** *SIGLEC14* CNVs detected in ADNI and ADSP cohorts. Read depth shown by chromosomal position of whole-genome sequencing in a representative example of each CNV detected. Exon/intron maps for *SIGLEC14* and *SIGLEC5* at figure top for reference. Purple: copy number variation. Inset: expanded view of locus. Red dotted line: location of copy number variation assay. The dotted line in the insets shows the boundaries of the full-size image.

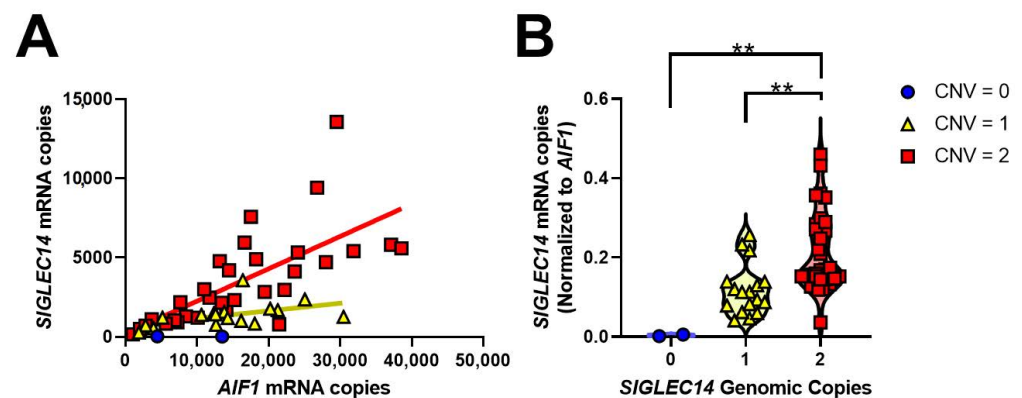
**Table 4.** Summary of the *SIGLEC14* CNV in the 3095 sample ADSP WGS dataset.

<i>SIGLEC14</i> Copy Number	Caucasian	African American	Other	Total
0	24	74	44	142
1	304	348	316	968
2	692	522	652	1866
3	21	53	43	117
4	0	1	1	2
<b>Total</b>	1041	998	1056	3095
<b>Deletion MAF</b>	0.1691	0.2485	0.1913	0.2023
<b>Addition MAF</b>	0.0101	0.0276	0.0213	0.0195

MAF: Minor allele frequency.

### 3.4. *SIGLEC14* Is Expressed in Human Brain, and CNV Correlates with Gene Expression

To test whether gene expression compensation may neutralize the effect of genomic *SIGLEC14* deletion, we quantified *SIGLEC14* expression relative to *SIGLEC14* gene copy number in cDNA prepared from human brain samples. Consistent with RNAseq studies that show *SIGLEC14* is expressed in microglia, *SIGLEC14* expression strongly correlated with expression of the microglial gene *AIF1* ( $p < 0.0001$ ,  $r^2 = 0.409$ , Figure 3A) [19,32]. When *SIGLEC14* expression is normalized to *AIF1* expression, *SIGLEC14* expression was dependent in a step-wise manner with *SIGLEC14* CNV ( $p = 0.0002$ ,  $F_{2,47} = 10.679$ , Figure 3B). Strikingly, individuals with one copy of *SIGLEC14* have a mean *SIGLEC14* expression of 54.6% compared to individuals with two copies. We interpret this to mean that there is no compensatory increase in *SIGLEC14* expression in individuals heterozygous for *SIGLEC14* deletion.

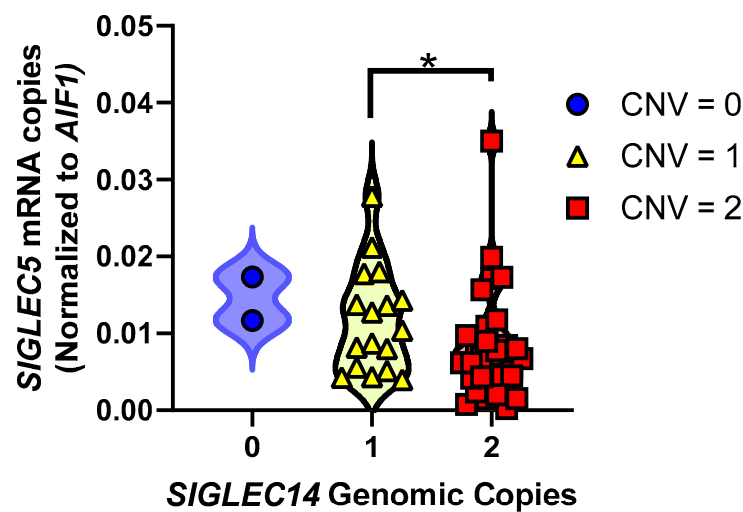


**Figure 3.** *SIGLEC14* expression correlates with microglial gene *AIF1* and *SIGLEC14* CNV. (A) *SIGLEC14* is expressed in microglia ( $p < 0.0001$ ,  $F_{1,48} = 33.19$ ,  $r^2 = 0.409$ ). (B) *SIGLEC14* CNV strongly correlates with *SIGLEC14* gene expression ( $p = 0.0002$ ,  $F_{2,47} = 10.679$ ), Tukey's post-hoc multiple comparisons test. \*\*  $p < 0.01$ . We do not have statistical power to compare expression with CNV > 2, given its low MAF.

### 3.5. *SIGLEC14* Deletion Leads to Increased *SIGLEC5* Expression

To test whether *SIGLEC5* expression changed with respect to *SIGLEC14* deletion, we quantified *SIGLEC5* expression relative to *SIGLEC14* CNV in these same brain samples. Since *SIGLEC5* does not have its own promoter and there are no H3K27 acetylation peaks between *SIGLEC14* and *SIGLEC5*, we hypothesized that an inverse relationship exists between *SIGLEC14* CNV and *SIGLEC5* expression, where a *SIGLEC14* deletion brings *SIGLEC5* closer to the promoter leading to increased transcription (Supplemental Figure S4) [33–35]. We found that *SIGLEC5* expression significantly increases with respect to *SIGLEC14* genomic deletions (Figure 4;  $p = 0.0220$ ,  $F_{2,46} = 4.151$ ).





**Figure 4.** *SIGLEC5* expression inversely correlates with *SIGLEC14* CNV. *SIGLEC5* expression increases with fewer copies of *SIGLEC14*, presumably due to proximity to regulatory elements ( $p = 0.0220$ ,  $F_{2,46} = 4.151$ ), Tukey's post-hoc multiple comparisons test. \*  $p = 0.0389$ .

#### 4. Discussion

The primary finding of this paper is that pQTLs for ITIM and ITAM-containing proteins are overrepresented as being nominally significant for AD risk, suggesting that the ITIM and ITAM family of proteins may contribute to AD pathogenesis. This adds to the current body of work which supports the hypothesis that AD is mediated, at least in part, by immune cell dysfunction [1,4,5,36]. Indeed, transcriptomics and genomics studies have frequently identified genes predominantly expressed in microglia within the CNS as associated with AD risk [37–41]. Within a pQTL study, variants that affect the expression of the ITIM/ITAM family of genes—which govern immune cell activation state—are more commonly associated with AD risk than variants for genes, not in this family (Table 2). Although we hypothesized that variants that enhanced ITAM levels or decreased ITIM levels would be associated with reduced AD risk, this was not observed. This likely indicates that while some of these pQTLs may reflect increased functional signaling, others may involve alterations in splicing to generate soluble isoforms or may increase susceptibility to cleavage from the cell surface. Hence, an SNP that associates with increased plasma protein levels does not necessarily correlate with increased cell surface expression and signaling.

*SIGLEC14* was selected for further investigation based on its previously reported deletion polymorphism and close relationship to another AD-associated gene, *CD33* [2,25]. Since SNPs have previously been recognized as proxies for deletion of other genes [42–44], and *SIGLEC14* deletion has been previously reported [25], we hypothesized that the strong pQTL signal from rs1106476 reported in Sun et al. [24] correlated with *SIGLEC14* deletion. Indeed, we found that rs1106476 is a proxy for *SIGLEC14* deletion and the minor allele count corresponds to the number of *SIGLEC14* deletions in 89% of cases in our dataset (Table 3).

This proxy variant does not, however, predict copy numbers greater than two. For instance, we observed four individuals with three copies of *SIGLEC14*; two of these individuals were homozygous minor for rs1106476 and two were heterozygous for rs1106476 (Table 3). Additional copy number variation is also present in the ADSP and ADNI sequencing projects (Figure 2). These CNVs are equivalent across populations in these datasets (Table 4, Supplemental Figures S1–S3). Based on these data and the recombination peak which spans from upstream of *SIGLEC14* through exon 8 of *SIGLEC5* (Supplemental Figure S5), we hypothesize that the additional copies integrate from a deletion event, though far less frequently than the deletion itself [45]. Across the 3095 individual WGS

dataset in ADSP, we found *SIGLEC14* deletion has a minor allele frequency (MAF) of 0.2023, while insertion occurs at a MAF of only 0.0195, suggesting a 10-times lower rate of integration than deletion (Table 4).

In the brain, *SIGLEC14* is predominantly expressed in microglia, in keeping with its putative role as an immune receptor (Figure 3A). The *SIGLEC14* deletion polymorphism also strongly correlates with *SIGLEC14* gene expression (Figure 3B). Due to the low frequency of the additional copy integration, we do not have sufficient samples with which to correlate *SIGLEC14* expression to additional copy numbers, nor can we conclude whether additional *SIGLEC14* genomic copies are transcribed in frame and subsequently produce protein.

We also find that *SIGLEC14* deletion increases the expression of *SIGLEC5* (Figure 4). For individuals with at least one copy of *SIGLEC14*, the expression of *SIGLEC14* is substantially higher than *SIGLEC5*. Coupled with the lack of an independent promoter or H3K27 acetylation peaks between the two genes in GeneHancer or Encode, respectively, we infer that expression of both genes is governed by a common promoter proximal to *SIGLEC14*, that the integrity of this promoter is preserved after *SIGLEC14* deletion, and that *SIGLEC14* deletion results in an increase in *SIGLEC5* expression due to its closer proximity to this common element. The SIGLEC family of receptors bind sialic acids as ligands to initiate their signaling cascades, and sialylated proteins, as well as gangliosides, are abundant in amyloid plaques [46–48]. This decrease in expression of *SIGLEC14*, an ITAM-coupling protein, and concomitant increase in expression of *SIGLEC5*, an ITIM-containing protein, may lead to a dampened microglial activation state or proportion of activated microglia in deletion carriers. We speculate that decreased *SIGLEC14* expression and increased *SIGLEC5* expression may decrease the phagocytic capacity in AD. This is similar to the inverse relationship between *TREM2* and *CD33*, two well-known AD risk factors. Loss of the ITAM-containing *TREM2* decreases phagocytic capacity, while loss of *CD33* increases phagocytic capacity [11,13,49]. Since *TREM2*, which couples with *DAP12*, is critical for the transition of microglia into a full disease-associated phenotype, *SIGLEC14* may also contribute to this transition [50]. Future studies could investigate whether at the single-cell level *SIGLEC14* CNV affects disease-associated microglial induction.

Copy number variation may represent a relatively unexplored source of genetic variation in AD [51]. GWAS such as Jansen et al. rely on SNPs, which do not always capture the full range of variation [2]. Additionally, “camouflaged” genes such as *SIGLEC5* and *SIGLEC14* with high sequence identity due to gene duplication are challenging for WGS and WES technologies which rely on small fragments of DNA sequence, typically under 250 bp reads [51]. As such, variants which may have disease relevance and association may be overlooked with current methods. *SIGLEC14* is an example of one such possibly overlooked risk contributor in AD. *SIGLEC14* encodes an ITAM protein and signals through *DAP12* similar to *TREM2*, and deletion of *SIGLEC14* is associated with increased AD risk, also similar to SNPs that reduce *TREM2* function [1,3–5]. Ligands for *SIGLEC14*, which include sialylated proteins, are commonly found within amyloid plaques similar to ligands for *TREM2*. We propose that the effect size and significance of association are masked through copy number variation not accounted for using the proxy SNP alone, i.e., loss of *SIGLEC14* function likely increases risk, but the proxy SNP rs1106476 occasionally also marks the individuals with an extra *SIGLEC14* copy, thus reducing the power of rs1106476 association with AD. We thus conclude that *SIGLEC14* represents a potentially overlooked AD genetic risk factor due to complex genetics.

**Supplementary Materials:** The following are available online at <https://www.mdpi.com/article/10.3390/genes12071008/s1>, Figure S1: Whole genome sequencing (WGS) read depth data from the Alzheimer’s Disease Sequencing Project (ADSP) in Caucasian population, Figure S2: WGS read depth data from the ADSP in African American population, Figure S3: WGS read depth data from the ADSP in all other populations, Table S1: List of ITIM/ITAM genes and their aliases.

**Author Contributions:** Conceptualization, B.C.S., D.W.F. and S.E.; data curation, B.C.S. and Y.K.; formal analysis, B.C.S., Y.K., D.W.F. and S.E.; funding acquisition, D.W.F. and S.E.; investigation, B.C.S., Y.K., J.F.S., D.W.F. and S.E.; methodology, B.C.S., Y.K., J.F.S., D.W.F. and S.E.; resources, B.C.S., Y.K., J.F.S., D.W.F. and S.E.; supervision, D.W.F. and S.E.; visualization, B.C.S. and Y.K.; writing—original draft, B.C.S.; writing—reviewing and editing, B.C.S., Y.K., J.F.S., D.W.F. and S.E. All authors have read and agreed to the published version of the manuscript.

**Funding:** This work was funded by grants R21AG068370 (S.E.), RF1AG059717 (S.E.), RF1AG059717-01S1 (S.E. & B.C.S.), R56AG057191 (D.W.F. & Y.K.), R01AG057187 (D.W.F. & Y.K.), R21AG061551 (D.W.F. & Y.K.), R01AG054060 (D.W.F. & Y.K.), and the UK-ADC P30AG028383 from the National Institute on Aging.

**Institutional Review Board Statement:** The study was conducted according to the guidelines of the Declaration of Helsinki and approved by the Institutional Review Board at the University of Kentucky (protocol code 48095 on 9/16/2020).

**Informed Consent Statement:** Informed consent was obtained for all subjects involved in the study.

**Data Availability Statement:** The Sun et al. proteomics dataset is available through the supplementary materials provided in the original publication, accessed on 30 January 2020 [24]. The Jansen et al. AD summary statistics are available through: [https://ctg.cncr.nl/software/summary\\_statistics](https://ctg.cncr.nl/software/summary_statistics), accessed on 10 January 2019.

**Conflicts of Interest:** The authors declare no conflict of interest.

## References

1. Hollingworth, P.; Harold, D.; Sims, R.; Gerrish, A.; Lambert, J.C.; Carrasquillo, M.M.; Abraham, R.; Hamshere, M.L.; Pahwa, J.S.; Moskva, V.; et al. Common variants at ABCA7, MS4A6A/MS4A4E, EPHA1, CD33 and CD2AP are associated with Alzheimer's disease. *Nat. Genet.* **2011**, *43*, 429–435. [[CrossRef](#)] [[PubMed](#)]
2. Jansen, I.E.; Savage, J.E.; Watanabe, K.; Bryois, J.; Williams, D.M.; Steinberg, S.; Sealock, J.; Karlsson, I.K.; Hagg, S.; Athanasiu, L.; et al. Genome-wide meta-analysis identifies new loci and functional pathways influencing Alzheimer's disease risk. *Nat. Genet.* **2019**, *51*, 404–413. [[CrossRef](#)] [[PubMed](#)]
3. Kunkle, B.W.; Grenier-Boley, B.; Sims, R.; Bis, J.C.; Damotte, V.; Naj, A.C.; Boland, A.; Vronskaya, M.; van der Lee, S.J.; Amlie-Wolf, A.; et al. Genetic meta-analysis of diagnosed Alzheimer's disease identifies new risk loci and implicates Abeta, tau, immunity and lipid processing. *Nat. Genet.* **2019**, *51*, 414–430. [[CrossRef](#)] [[PubMed](#)]
4. Lambert, J.C.; Ibrahim-Verbaas, C.A.; Harold, D.; Naj, A.C.; Sims, R.; Bellenguez, C.; DeStafano, A.L.; Bis, J.C.; Beecham, G.W.; Grenier-Boley, B.; et al. Meta-analysis of 74,046 individuals identifies 11 new susceptibility loci for Alzheimer's disease. *Nat. Genet.* **2013**, *45*, 1452–1458. [[CrossRef](#)]
5. Naj, A.C.; Jun, G.; Beecham, G.W.; Wang, L.S.; Vardarajan, B.N.; Buross, J.; Gallins, P.J.; Buxbaum, J.D.; Jarvik, G.P.; Crane, P.K.; et al. Common variants at MS4A4/MS4A6E, CD2AP, CD33 and EPHA1 are associated with late-onset Alzheimer's disease. *Nat. Genet.* **2011**, *43*, 436–441. [[CrossRef](#)]
6. Novikova, G.; Kapoor, M.; Tcw, J.; Abud, E.M.; Efthymiou, A.G.; Chen, S.X.; Cheng, H.; Fullard, J.F.; Bendl, J.; Liu, Y.; et al. Integration of Alzheimer's disease genetics and myeloid genomics identifies disease risk regulatory elements and genes. *Nat. Commun.* **2021**, *12*, 1–14. [[CrossRef](#)]
7. Jones, L.; Holmans, P.A.; Hamshere, M.L.; Harold, D.; Moskva, V.; Ivanov, D.; Pocklington, A.; Abraham, R.; Hollingworth, P.; Sims, R.; et al. Genetic evidence implicates the immune system and cholesterol metabolism in the aetiology of Alzheimer's disease. *PLoS ONE* **2010**, *5*, e13950. [[CrossRef](#)]
8. Karch, C.M.; Goate, A.M. Alzheimer's disease risk genes and mechanisms of disease pathogenesis. *Biol. Psychiatry* **2015**, *77*, 43–51. [[CrossRef](#)]
9. Malik, M.; Parikh, I.; Vasquez, J.B.; Smith, C.; Tai, L.; Bu, G.; LaDu, M.J.; Fardo, D.W.; Rebeck, G.W.; Estus, S. Genetics ignite focus on microglial inflammation in Alzheimer's disease. *Mol. Neurodegener.* **2015**, *10*, 52. [[CrossRef](#)] [[PubMed](#)]
10. Bhattacharjee, A.; Jung, S.J.; Ho, M.; Eskandari-Sedighi, G.; St. Laurent, C.D.; McCord, K.A.; Bains, A.; Gaurav, S.; Sarkar, S.S.; Plemel, J.; et al. The CD33 short isoform is a gain-of-function variant that enhances A $\beta$ 1-42 phagocytosis in microglia. *Mol. Neurodegener.* **2021**, *16*, 1–22. [[CrossRef](#)]
11. Bhattacharjee, A.; Rodrigues, E.; Jung, J.; Luzentales-Simpson, M.; Enterina, J.R.; Galleguillos, D.; St. Laurent, C.D.; Nakhaei-Nejad, M.; Fuchsberger, F.F.; Streith, L.; et al. Repression of phagocytosis by human CD33 is not conserved with mouse CD33. *Commun. Biol.* **2019**, *2*, 450. [[CrossRef](#)]
12. Chan, G.; White, C.C.; Winn, P.A.; Cimpean, M.; Replogle, J.M.; Glick, L.R.; Cuedon, N.E.; Ryan, K.J.; Johnson, K.A.; Schneider, J.A.; et al. CD33 modulates TREM2: Convergence of Alzheimer loci. *Nat. Neurosci.* **2015**, *18*, 1556–1558. [[CrossRef](#)]

13. Griciuc, A.; Serrano-Pozo, A.; Parrado, A.R.; Lesinski, A.N.; Asselin, C.N.; Mullin, K.; Hooli, B.; Choi, S.H.; Hyman, B.T.; Tanzi, R.E. Alzheimer's Disease Risk Gene CD33 Inhibits Microglial Uptake of Amyloid Beta. *Neuron* **2013**, *78*, 631–643. [[CrossRef](#)] [[PubMed](#)]
14. Malik, M.; Chiles, I.I.I.J.; Xi, H.S.; Medway, C.; Simpson, J.; Potluri, S.; Howard, D.; Liang, Y.; Paumi, C.M.; Mukherjee, S.; et al. Genetics of CD33 in Alzheimer's disease and acute myeloid leukemia. *Hum. Mol. Genet.* **2015**, *24*, 3557–3570. [[CrossRef](#)]
15. Malik, M.; Simpson, J.F.; Parikh, I.; Wilfred, B.R.; Fardo, D.W.; Nelson, P.T.; Estus, S. CD33 Alzheimer's Risk-Altering Polymorphism, CD33 Expression, and Exon 2 Splicing. *J. Neurosci.* **2013**, *33*, 13320–13325. [[CrossRef](#)] [[PubMed](#)]
16. Raj, T.; Ryan, K.J.; Replogle, J.M.; Chibrik, L.B.; Rosenkrantz, L.; Tang, A.; Rothamel, K.; Stranger, B.E.; Bennett, D.A.; Evans, D.A.; et al. CD33: Increased inclusion of exon 2 implicates the Ig V-set domain in Alzheimer's disease susceptibility. *Hum. Mol. Genet.* **2014**, *23*, 2729–2736. [[CrossRef](#)] [[PubMed](#)]
17. Siddiqui, S.S.; Springer, S.A.; Verhagen, A.; Sundaramurthy, V.; Alisson-Silva, F.; Jiang, W.; Ghosh, P.; Varki, A. The Alzheimer's disease-protective CD33 splice variant mediates adaptive loss of function via diversion to an intracellular pool. *J. Biol. Chem.* **2017**, *292*, 15312–15320. [[CrossRef](#)]
18. McQuade, A.; Kang, Y.J.; Hasselmann, J.; Jairaman, A.; Sotelo, A.; Coburn, M.; Shabestari, S.K.; Chadarevian, J.P.; Fote, G.; Tu, C.H.; et al. Gene expression and functional deficits underlie TREM2-knockout microglia responses in human models of Alzheimer's disease. *Nat. Commun.* **2020**, *11*, 1–17. [[CrossRef](#)] [[PubMed](#)]
19. Estus, S.; Shaw, B.C.; Devanney, N.; Katsumata, Y.; Press, E.E.; Fardo, D.W. Evaluation of CD33 as a genetic risk factor for Alzheimer's disease. *Acta Neuropathol.* **2019**, *138*, 187–199. [[CrossRef](#)]
20. Griciuc, A.; Tanzi, R.E. The role of innate immune genes in Alzheimer's disease. *Curr. Opin. Neurol.* **2021**, *34*, 228–236. [[CrossRef](#)]
21. Efthymiou, A.G.; Goate, A.M. Late onset Alzheimer's disease genetics implicates microglial pathways in disease risk. *Mol. Neurodegener.* **2017**, *12*, 43. [[CrossRef](#)]
22. Gandy, S.; Heppner, F.L. Microglia as dynamic and essential components of the amyloid hypothesis. *Neuron* **2013**, *78*, 575–577. [[CrossRef](#)]
23. Allen, M.; Zou, F.; Chai, H.S.; Younkin, C.S.; Crook, J.; Pankratz, V.S.; Carrasquillo, M.M.; Rowley, C.N.; Nair, A.A.; Middha, S.; et al. Novel late-onset Alzheimer disease loci variants associate with brain gene expression. *Neurology* **2012**, *79*, 221–228. [[CrossRef](#)] [[PubMed](#)]
24. Sun, B.B.; Maranville, J.C.; Peters, J.E.; Stacey, D.; Staley, J.R.; Blackshaw, J.; Burgess, S.; Jiang, T.; Paige, E.; Surendran, P.; et al. Genomic atlas of the human plasma proteome. *Nature* **2018**, *558*, 73–79. [[CrossRef](#)]
25. Yamanaka, M.; Kato, Y.; Angata, T.; Narimatsu, H. Deletion polymorphism of SIGLEC14 and its functional implications. *Glycobiology* **2009**, *19*, 841–846. [[CrossRef](#)]
26. Zou, F.; Gopalraj, R.K.; Lok, J.; Zhu, H.; Ling, I.F.; Simpson, J.F.; Tucker, H.M.; Kelly, J.F.; Younkin, S.G.; Dickson, D.W.; et al. Sex-dependent association of a common low-density lipoprotein receptor polymorphism with RNA splicing efficiency in the brain and Alzheimer's disease. *Hum. Mol. Genet.* **2007**, *17*, 929–935. [[CrossRef](#)] [[PubMed](#)]
27. Li, H.; Handsaker, B.; Wysoker, A.; Fennell, T.; Ruan, J.; Homer, N.; Marth, G.; Abecasis, G.; Durbin, R.; Genome Project Data Processing Subgroup. The Sequence Alignment/Map format and SAMtools. *Bioinformatics* **2009**, *25*, 2078–2079. [[CrossRef](#)] [[PubMed](#)]
28. Barrow, A.D.; Trowsdale, J. You say ITAM and I say ITIM, let's call the whole thing off: The ambiguity of immunoreceptor signalling. *Eur. J. Immunol.* **2006**, *36*, 1646–1653. [[CrossRef](#)]
29. Dushek, O.; Goyette, J.; van der Merwe, P.A. Non-catalytic tyrosine-phosphorylated receptors. *Immunol. Rev.* **2012**, *250*, 258–276. [[CrossRef](#)]
30. Isakov, N. Immunoreceptor tyrosine-based activation motif (ITAM), a unique module linking antigen and Fc receptors to their signaling cascades. *J. Leukoc. Biol.* **1997**, *61*, 6–16. [[CrossRef](#)]
31. Ravetch, J.V. Immune Inhibitory Receptors. *Science* **2000**, *290*, 84–89. [[CrossRef](#)]
32. Zhang, Y.; Sloan, S.A.; Clarke, L.E.; Caneda, C.; Plaza, C.A.; Blumenthal, P.D.; Vogel, H.; Steinberg, G.K.; Edwards, M.S.; Li, G.; et al. Purification and Characterization of Progenitor and Mature Human Astrocytes Reveals Transcriptional and Functional Differences with Mouse. *Neuron* **2016**, *89*, 37–53. [[CrossRef](#)]
33. An integrated encyclopedia of DNA elements in the human genome. *Nature* **2012**, *489*, 57–74. [[CrossRef](#)]
34. Fishilevich, S.; Nudel, R.; Rappaport, N.; Hadar, R.; Plaschkes, I.; Iny Stein, T.; Rosen, N.; Kohn, A.; Twik, M.; Safran, M.; et al. GeneHancer: Genome-wide integration of enhancers and target genes in GeneCards. *Database* **2017**, *2017*. [[CrossRef](#)]
35. Kent, W.J.; Sugnet, C.W.; Furey, T.S.; Roskin, K.M.; Pringle, T.H.; Zahler, A.M.; Haussler, A.D. The Human Genome Browser at UCSC. *Genome Res.* **2002**, *12*, 996–1006. [[CrossRef](#)]
36. Mawuenyega, K.G.; Sigurdson, W.; Ovod, V.; Munsell, L.; Kasten, T.; Morris, J.C.; Yarasheski, K.E.; Bateman, R.J. Decreased Clearance of CNS-Amyloid in Alzheimer's Disease. *Science* **2010**, *330*, 1774. [[CrossRef](#)]
37. Holtman, I.R.; Raj, D.D.; Miller, J.A.; Schaafsma, W.; Yin, Z.; Brouwer, N.; Wes, P.D.; Möller, T.; Orre, M.; Kamphuis, W.; et al. Induction of a common microglia gene expression signature by aging and neurodegenerative conditions: A co-expression meta-analysis. *Acta Neuropathol. Commun.* **2015**, *3*, 31. [[CrossRef](#)] [[PubMed](#)]
38. Miller, J.A.; Woltjer, R.L.; Goodenbour, J.M.; Horvath, S.; Geschwind, D.H. Genes and pathways underlying regional and cell type changes in Alzheimer's disease. *Genome Med.* **2013**, *5*, 48. [[CrossRef](#)] [[PubMed](#)]

39. Orre, M.; Kamphuis, W.; Osborn, L.M.; Melief, J.; Kooijman, L.; Huitinga, I.; Klooster, J.; Bossers, K.; Hol, E.M. Acute isolation and transcriptome characterization of cortical astrocytes and microglia from young and aged mice. *Neurobiol. Aging* **2014**, *35*, 1–14. [[CrossRef](#)] [[PubMed](#)]
40. Wes, P.D.; Easton, A.; Corradi, J.; Barten, D.M.; Devidze, N.; Decarr, L.B.; Truong, A.; He, A.; Barrezueta, N.X.; Polson, C.; et al. Tau Overexpression Impacts a Neuroinflammation Gene Expression Network Perturbed in Alzheimer’s Disease. *PLoS ONE* **2014**, *9*, e106050. [[CrossRef](#)]
41. Zhang, B.; Gaiteri, C.; Bodea, L.-G.; Wang, Z.; McElwee, J.; Podtelezchnikov, A.A.; Zhang, C.; Xie, T.; Tran, L.; Dobrin, R.; et al. Integrated Systems Approach Identifies Genetic Nodes and Networks in Late-Onset Alzheimer’s Disease. *Cell* **2013**, *153*, 707–720. [[CrossRef](#)] [[PubMed](#)]
42. Abdollahi, M.R.; Huang, S.; Rodriguez, S.; Guthrie, P.A.I.; Smith, G.D.; Ebrahim, S.; Lawlor, D.A.; Day, I.N.M.; Gaunt, T.R. Homogeneous Assay of rs4343, anACEI/D Proxy, and an Analysis in the British Women’s Heart and Health Study (BWHHS). *Dis. Markers* **2008**, *24*, 11–17. [[CrossRef](#)]
43. Hinds, D.A.; Kloek, A.P.; Jen, M.; Chen, X.; Frazer, K.A. Common deletions and SNPs are in linkage disequilibrium in the human genome. *Nat. Genet.* **2006**, *38*, 82–85. [[CrossRef](#)]
44. McCarroll, S.A.; Huett, A.; Kuballa, P.; Chilewski, S.D.; Landry, A.; Goyette, P.; Zody, M.C.; Hall, J.L.; Brant, S.R.; Cho, J.H.; et al. Deletion polymorphism upstream of IRGM associated with altered IRGM expression and Crohn’s disease. *Nat. Genet.* **2008**, *40*, 1107–1112. [[CrossRef](#)] [[PubMed](#)]
45. Machiela, M.J.; Chanock, S.J. LDlink: A web-based application for exploring population-specific haplotype structure and linking correlated alleles of possible functional variants. *Bioinformatics* **2015**, *31*, 3555–3557. [[CrossRef](#)]
46. Ariga, T.; McDonald, M.P.; Yu, R.K. Thematic Review Series: Sphingolipids. Role of ganglioside metabolism in the pathogenesis of Alzheimer’s disease—A review. *J. Lipid Res.* **2008**, *49*, 1157–1175. [[CrossRef](#)] [[PubMed](#)]
47. Yanagisawa, K. Role of gangliosides in Alzheimer’s disease. *Biochim. Biophys. Acta (BBA) Biomembr.* **2007**, *1768*, 1943–1951. [[CrossRef](#)]
48. Salminen, A.; Kaarniranta, K. Siglec receptors and hiding plaques in Alzheimer’s disease. *J. Mol. Med.* **2009**, *87*, 697–701. [[CrossRef](#)]
49. Griciuc, A.; Patel, S.; Federico, A.N.; Choi, S.H.; Innes, B.J.; Oram, M.K.; Cereghetti, G.; McGinty, D.; Anselmo, A.; Sadreyev, R.I.; et al. TREM2 Acts Downstream of CD33 in Modulating Microglial Pathology in Alzheimer’s Disease. *Neuron* **2019**, *103*, 820–835.e827. [[CrossRef](#)]
50. Keren-Shaul, H.; Spinrad, A.; Weiner, A.; Matcovitch-Natan, O.; Dvir-Szternfeld, R.; Ulland, T.K.; David, E.; Baruch, K.; Lara-Astaiso, D.; Toth, B.; et al. A Unique Microglia Type Associated with Restricting Development of Alzheimer’s Disease. *Cell* **2017**, *169*, 1276–1290.e1217. [[CrossRef](#)]
51. Ebbert, M.T.W.; Jensen, T.D.; Jansen-West, K.; Sens, J.P.; Reddy, J.S.; Ridge, P.G.; Kauwe, J.S.K.; Belzil, V.; Pregent, L.; Carrasquillo, M.M.; et al. Systematic analysis of dark and camouflaged genes reveals disease-relevant genes hiding in plain sight. *Genome. Biol.* **2019**, *20*, 97. [[CrossRef](#)] [[PubMed](#)]