

9-2014

Crystal Structure of 1-methoxy-2,2,2-tris(pyrazol-1-yl)ethane

Ganna Lyubartseva

Southern Arkansas University, GannaLyubartseva@saumag.edu

Sean Parkin

University of Kentucky, s.parkin@uky.edu

Morgan D. Coleman

Southern Arkansas University

Uma Prasad Mallik

Southern Arkansas University

Right click to open a feedback form in a new tab to let us know how this document benefits you.

Follow this and additional works at: https://uknowledge.uky.edu/chemistry_facpub

 Part of the [Chemistry Commons](#)

Repository Citation

Lyubartseva, Ganna; Parkin, Sean; Coleman, Morgan D.; and Mallik, Uma Prasad, "Crystal Structure of 1-methoxy-2,2,2-tris(pyrazol-1-yl)ethane" (2014). *Chemistry Faculty Publications*. 31.

https://uknowledge.uky.edu/chemistry_facpub/31

This Article is brought to you for free and open access by the Chemistry at UKnowledge. It has been accepted for inclusion in Chemistry Faculty Publications by an authorized administrator of UKnowledge. For more information, please contact UKnowledge@lsv.uky.edu.

Crystal Structure of 1-methoxy-2,2,2-tris(pyrazol-1-yl)ethane**Notes/Citation Information**

Published in *Acta Crystallographica Section E: Crystallographic Communications*, v. 70, part 9, p. o1047-o1048.

This is an open-access article distributed under the terms of the [Creative Commons Attribution Licence](#), which permits unrestricted use, distribution, and reproduction in any medium, provided the original authors and source are cited.

Digital Object Identifier (DOI)

<https://doi.org/10.1107/S1600536814018789>

Crystal structure of 1-methoxy-2,2,2-tris(pyrazol-1-yl)ethane

Ganna Lyubartseva,^{a*} Sean Parkin,^b Morgan D. Coleman^a and Uma Prasad Mallik^a^aDepartment of Biochemistry and Chemistry, Southern Arkansas University, Magnolia, AR 71753, USA, and ^bDepartment of Chemistry, University of Kentucky, Lexington, KY 40506, USA. *Correspondence e-mail: GannaLyubartseva@saumag.edu

Received 17 August 2014; accepted 18 August 2014

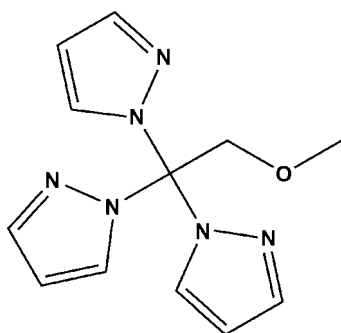
Edited by H. Stoeckli-Evans, University of Neuchâtel, Switzerland

The title compound, C₁₂H₁₄N₆O, consists of three pyrazole rings bound *via* nitrogen to the distal ethane carbon of methoxy ethane. The dihedral angles between the three pyrazole rings are 67.62 (14), 73.74 (14), and 78.92 (12)°. In the crystal, molecules are linked by bifurcated C—H...N hydrogen bonds, forming double-stranded chains along [001]. The chains are linked *via* C—H...O hydrogen bonds, forming a three-dimensional framework structure. The crystal was refined as a perfect (0.5:0.5) inversion twin.

Keywords: crystal structure; tris(pyrazol-1-yl)ethane; scorpionate ligands.**CCDC reference:** 1019968

1. Related literature

For properties of pyrazole-based tridentate ligands, see: Paulo *et al.* (2004); Bigmore *et al.* (2005). For nickel and cobalt complexes of N-donor tridentate scorpionate ligands, see: Lyubartseva *et al.* (2011, 2012, 2013a,b); Lyubartseva & Parkin (2009). For the synthesis of the title compound, see: Maria *et al.* (2007).



2. Experimental

2.1. Crystal data

C ₁₂ H ₁₄ N ₆ O	$V = 1289.94 (5) \text{ \AA}^3$
$M_r = 258.29$	$Z = 4$
Monoclinic, Cc	Mo $K\alpha$ radiation
$a = 12.5828 (3) \text{ \AA}$	$\mu = 0.09 \text{ mm}^{-1}$
$b = 12.3847 (3) \text{ \AA}$	$T = 90 \text{ K}$
$c = 8.4807 (2) \text{ \AA}$	$0.28 \times 0.20 \times 0.16 \text{ mm}$
$\beta = 102.5635 (11)^\circ$	

2.2. Data collection

Nonius KappaCCD diffractometer	11397 measured reflections
Absorption correction: multi-scan (SADABS; Sheldrick, 1996)	2934 independent reflections
$T_{\min} = 0.749$, $T_{\max} = 0.942$	2386 reflections with $I > 2\sigma(I)$
	$R_{\text{int}} = 0.032$

2.3. Refinement

$R[F^2 > 2\sigma(F^2)] = 0.042$	H-atom parameters constrained
$wR(F^2) = 0.102$	$\Delta\rho_{\text{max}} = 0.23 \text{ e \AA}^{-3}$
$S = 1.10$	$\Delta\rho_{\text{min}} = -0.18 \text{ e \AA}^{-3}$
2934 reflections	Absolute structure: Refined as a
174 parameters	perfect (<i>i.e.</i> 50:50) inversion twin
2 restraints	

Table 1

Hydrogen-bond geometry (Å, °).

$D-H\cdots A$	$D-H$	$H\cdots A$	$D\cdots A$	$D-H\cdots A$
$C5-H5A\cdots N2^i$	0.95	2.51	3.453 (4)	171
$C9-H9A\cdots N2^{ii}$	0.95	2.61	3.433 (4)	145
$C4-H4A\cdots O1^{iii}$	0.95	2.53	3.444 (4)	162

Symmetry codes: (i) $x, -y + 1, z + \frac{1}{2}$; (ii) $x, y, z + 1$; (iii) $x + \frac{1}{2}, -y + \frac{1}{2}, z + \frac{1}{2}$.

Data collection: *COLLECT* (Nonius, 1998); cell refinement: *SCALEPACK* (Otwinowski & Minor, 1997); data reduction: *DENZO-SMN* (Otwinowski & Minor, 1997); program(s) used to solve structure: *SHELXS97* (Sheldrick, 2008); program(s) used to refine structure: *SHELXL2014* (Sheldrick, 2008); molecular graphics: *XP in SHELXTL* (Sheldrick, 2008); software used to prepare material for publication: *SHELXL2014* and *PLATON* (Spek, 2009).

Acknowledgements

GL is grateful to the Southern Arkansas University Faculty Research Grant for financial support.

Supporting information for this paper is available from the IUCr electronic archives (Reference: SU2774).

References

- Bigmore, H. R., Lawrence, S. C., Mountford, P. & Tredget, C. S. (2005). *Dalton Trans.* pp. 635–651.
- Lyubartseva, G. & Parkin, S. (2009). *Acta Cryst.* **E65**, m1530.
- Lyubartseva, G., Parkin, S. & Mallik, U. P. (2011). *Acta Cryst.* **E67**, m1656–m1657.
- Lyubartseva, G., Parkin, S. & Mallik, U. P. (2013a). *Acta Cryst.* **E69**, m532–m533.
- Lyubartseva, G., Parkin, S. & Mallik, U. P. (2013b). *Acta Cryst.* **E69**, m537.

- Lyubartseva, G., Parkin, S., Mallik, U. P. & Jeon, H. K. (2012). *Acta Cryst.* **E68**, m888.
- Maria, L., Cunha, S., Videira, M., Gano, L., Paulo, A., Santos, I. C. & Santos, I. (2007). *Dalton Trans.* pp. 3010–3019.
- Nonius (1998). *COLLECT*. Nonius BV, Delft, The Netherlands.
- Otwinowski, Z. & Minor, W. (1997). *Methods in Enzymology*, Vol. 276, *Macromolecular Crystallography, Part A*, edited by C. W. Carter Jr & R. M. Sweet, pp. 307–326. New York: Academic Press.
- Paulo, A., Correia, J. D. G., Campello, M. P. C. & Santos, I. (2004). *Polyhedron*, **23**, 331–360.
- Sheldrick, G. M. (1996). *SADABS*. University of Göttingen, Germany.
- Sheldrick, G. M. (2008). *Acta Cryst.* **A64**, 112–122.
- Spek, A. L. (2009). *Acta Cryst.* **D65**, 148–155.

supporting information

Acta Cryst. (2014). E70, o1047–o1048 [doi:10.1107/S1600536814018789]

Crystal structure of 1-methoxy-2,2,2-tris(pyrazol-1-yl)ethane

Ganna Lyubartseva, Sean Parkin, Morgan D. Coleman and Uma Prasad Mallik

S1. Synthesis and crystallization

The title compound was prepared using the published procedure (Maria *et al.*, 2007). Colourless block-like crystals were obtained by slow evaporation of a diethyl ether solution of pure product. Spectral and other characterizations are in good accordance with the previously reported data (Maria *et al.*, 2007).

S2. Refinement

H atoms were located in difference Fourier maps, but were subsequently included in the refinement using a riding model approximation: C—H = 0.95–0.99 Å with $U_{\text{iso}}(\text{H}) = 1.5U_{\text{eq}}(\text{C-methyl})$ and $= 1.2U_{\text{eq}}(\text{C})$ for other H atoms. The crystal was refined as a perfect (0.5:0.5) inversion twin.

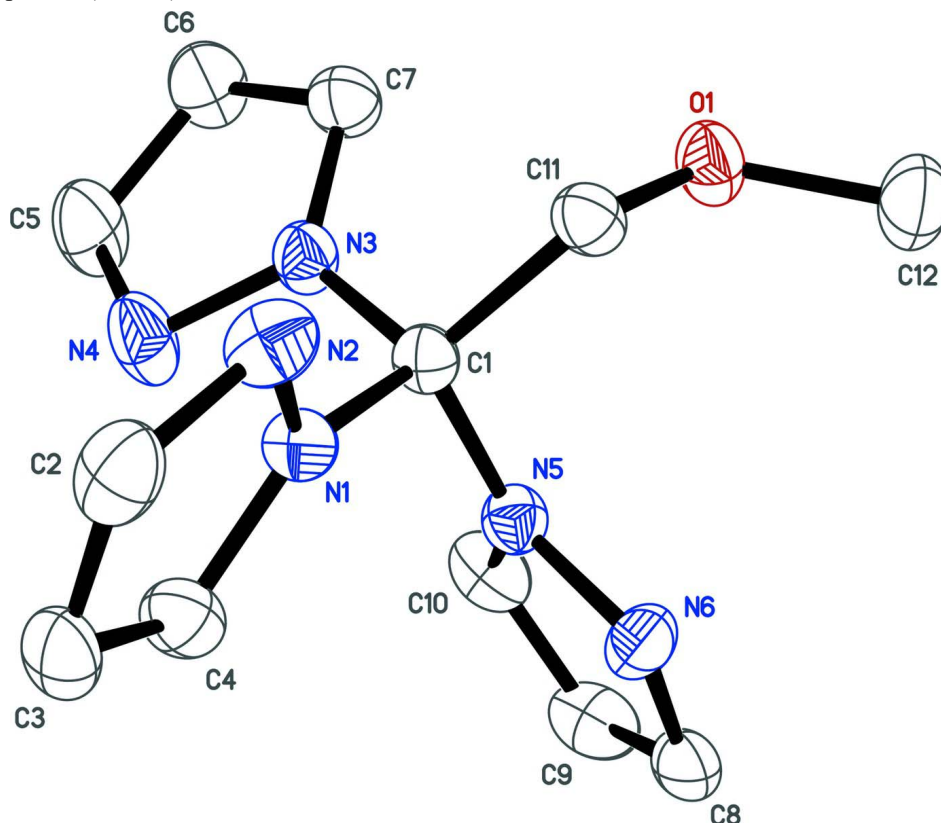


Figure 1

View of molecular structure of the title molecule, with atom labelling. Displacement ellipsoids are drawn at the 50% probability level. H atoms have been omitted for clarity.

1-Methoxy-2,2,2-tris(pyrazol-1-yl)ethane

Crystal data

C₁₂H₁₄N₆O $M_r = 258.29$ Monoclinic, *Cc* $a = 12.5828 (3) \text{ \AA}$ $b = 12.3847 (3) \text{ \AA}$ $c = 8.4807 (2) \text{ \AA}$ $\beta = 102.5635 (11)^\circ$ $V = 1289.94 (5) \text{ \AA}^3$ $Z = 4$ $F(000) = 544$ $D_x = 1.330 \text{ Mg m}^{-3}$ Mo $K\alpha$ radiation, $\lambda = 0.71073 \text{ \AA}$

Cell parameters from 1549 reflections

 $\theta = 1.0\text{--}27.5^\circ$ $\mu = 0.09 \text{ mm}^{-1}$ $T = 90 \text{ K}$

Block, colourless

 $0.28 \times 0.20 \times 0.16 \text{ mm}$

Data collection

Nonius KappaCCD

diffractometer

Radiation source: fine-focus sealed-tube

Detector resolution: 9.1 pixels mm^{-1} φ and ω scans at fixed $\chi = 55^\circ$

Absorption correction: multi-scan

(SADABS; Sheldrick, 1996)

 $T_{\min} = 0.749$, $T_{\max} = 0.942$

11397 measured reflections

2934 independent reflections

2386 reflections with $I > 2\sigma(I)$ $R_{\text{int}} = 0.032$ $\theta_{\max} = 27.5^\circ$, $\theta_{\min} = 2.3^\circ$ $h = -16 \rightarrow 16$ $k = -16 \rightarrow 16$ $l = -10 \rightarrow 11$

Refinement

Refinement on F^2

Least-squares matrix: full

 $R[F^2 > 2\sigma(F^2)] = 0.042$ $wR(F^2) = 0.102$ $S = 1.10$

2934 reflections

174 parameters

2 restraints

Primary atom site location: structure-invariant

direct methods

Secondary atom site location: difference Fourier

map

Hydrogen site location: difference Fourier map

H-atom parameters constrained

 $w = 1/[\sigma^2(F_o^2) + (0.0453P)^2 + 0.5917P]$ where $P = (F_o^2 + 2F_c^2)/3$ $(\Delta/\sigma)_{\max} < 0.001$ $\Delta\rho_{\max} = 0.23 \text{ e \AA}^{-3}$ $\Delta\rho_{\min} = -0.18 \text{ e \AA}^{-3}$

Extinction correction: SHELXL2014 (Sheldrick,

2008), $F_c^* = kF_c[1 + 0.001x F_c^2 \lambda^3 / \sin(2\theta)]^{-1/4}$

Extinction coefficient: 0.0127 (19)

Absolute structure: Refined as a perfect (*i.e.*

50:50) inversion twin.

Special details

Experimental. The crystal was mounted with polyisobutene oil on the tip of a fine glass fibre, which was fastened in a copper mounting pin with electrical solder. It was placed directly into the cold gas stream of a liquid nitrogen based cryostat, according to published methods (Hope, 1994; Parkin & Hope, 1998).

Diffraction data were collected with the crystal at 90 K, which is standard practice in this laboratory for the majority of flash-cooled crystals.

Geometry. All e.s.d.'s (except the e.s.d. in the dihedral angle between two l.s. planes) are estimated using the full covariance matrix. The cell e.s.d.'s are taken into account individually in the estimation of e.s.d.'s in distances, angles and torsion angles; correlations between e.s.d.'s in cell parameters are only used when they are defined by crystal symmetry. An approximate (isotropic) treatment of cell e.s.d.'s is used for estimating e.s.d.'s involving l.s. planes.

Refinement. Refinement progress was checked using PLATON (Spek, 2009) and by an *R*-tensor (Parkin, 2000). The final model was further checked with the IUCr utility *checkCIF*.

Fractional atomic coordinates and isotropic or equivalent isotropic displacement parameters (\AA^2)

	<i>x</i>	<i>y</i>	<i>z</i>	$U_{\text{iso}}^*/U_{\text{eq}}$
O1	0.34875 (17)	0.16856 (16)	0.5089 (3)	0.0305 (5)

N1	0.62903 (19)	0.25690 (19)	0.5191 (3)	0.0229 (5)
N2	0.6299 (2)	0.2508 (2)	0.3598 (3)	0.0291 (6)
N3	0.4892 (2)	0.35743 (18)	0.5996 (3)	0.0255 (6)
N4	0.5617 (2)	0.4320 (2)	0.6770 (4)	0.0378 (7)
N5	0.5520 (2)	0.1924 (2)	0.7270 (3)	0.0236 (5)
N6	0.5898 (2)	0.0891 (2)	0.7266 (3)	0.0296 (6)
C1	0.5280 (2)	0.2497 (2)	0.5740 (3)	0.0212 (6)
C2	0.7343 (3)	0.2658 (3)	0.3557 (4)	0.0336 (7)
H2A	0.7610	0.2658	0.2591	0.040*
C3	0.8001 (2)	0.2816 (2)	0.5100 (4)	0.0318 (7)
H3A	0.8765	0.2933	0.5376	0.038*
C4	0.7295 (3)	0.2762 (2)	0.6118 (4)	0.0303 (7)
H4A	0.7475	0.2845	0.7259	0.036*
C5	0.5010 (3)	0.5170 (3)	0.6921 (5)	0.0426 (9)
H5A	0.5290	0.5831	0.7406	0.051*
C6	0.3900 (3)	0.4977 (3)	0.6277 (5)	0.0394 (8)
H6A	0.3311	0.5461	0.6252	0.047*
C7	0.3848 (3)	0.3954 (3)	0.5699 (4)	0.0307 (7)
H7A	0.3210	0.3574	0.5187	0.037*
C8	0.6077 (3)	0.0592 (3)	0.8804 (4)	0.0330 (7)
H8A	0.6344	-0.0098	0.9187	0.040*
C9	0.5825 (3)	0.1410 (3)	0.9791 (4)	0.0379 (8)
H9A	0.5884	0.1385	1.0927	0.045*
C10	0.5474 (2)	0.2258 (3)	0.8775 (4)	0.0324 (7)
H10A	0.5244	0.2946	0.9067	0.039*
C11	0.4437 (2)	0.1869 (2)	0.4498 (4)	0.0252 (6)
H11A	0.4249	0.2284	0.3478	0.030*
H11B	0.4751	0.1169	0.4266	0.030*
C12	0.3184 (3)	0.0580 (3)	0.5101 (5)	0.0384 (8)
H12A	0.2517	0.0515	0.5511	0.058*
H12B	0.3770	0.0171	0.5800	0.058*
H12C	0.3057	0.0291	0.4000	0.058*

Atomic displacement parameters (Å²)

	U^{11}	U^{22}	U^{33}	U^{12}	U^{13}	U^{23}
O1	0.0238 (11)	0.0263 (11)	0.0426 (13)	-0.0028 (9)	0.0099 (9)	-0.0036 (9)
N1	0.0226 (13)	0.0254 (12)	0.0214 (13)	0.0009 (10)	0.0062 (10)	0.0004 (10)
N2	0.0335 (15)	0.0325 (14)	0.0239 (13)	0.0045 (11)	0.0115 (11)	0.0029 (11)
N3	0.0233 (12)	0.0213 (12)	0.0324 (13)	-0.0003 (10)	0.0072 (10)	-0.0024 (11)
N4	0.0282 (14)	0.0256 (14)	0.0600 (19)	-0.0051 (12)	0.0103 (13)	-0.0140 (13)
N5	0.0247 (12)	0.0237 (12)	0.0227 (12)	-0.0018 (10)	0.0058 (10)	-0.0001 (10)
N6	0.0359 (15)	0.0213 (13)	0.0294 (14)	0.0003 (10)	0.0025 (11)	0.0033 (10)
C1	0.0197 (14)	0.0219 (14)	0.0233 (15)	0.0004 (10)	0.0074 (12)	-0.0010 (11)
C2	0.0357 (17)	0.0306 (17)	0.0400 (19)	0.0029 (14)	0.0203 (15)	0.0051 (14)
C3	0.0222 (15)	0.0285 (15)	0.048 (2)	0.0000 (12)	0.0143 (15)	0.0000 (14)
C4	0.0257 (16)	0.0316 (17)	0.0334 (17)	0.0020 (13)	0.0057 (13)	-0.0024 (13)
C5	0.0370 (18)	0.0272 (18)	0.064 (2)	-0.0032 (14)	0.0130 (17)	-0.0149 (16)

C6	0.0308 (17)	0.0274 (17)	0.061 (2)	0.0062 (14)	0.0116 (16)	-0.0077 (15)
C7	0.0249 (15)	0.0287 (16)	0.0374 (17)	0.0024 (12)	0.0042 (13)	-0.0008 (13)
C8	0.0248 (16)	0.0364 (18)	0.0353 (18)	-0.0083 (14)	0.0009 (13)	0.0113 (15)
C9	0.0300 (17)	0.060 (2)	0.0246 (16)	-0.0035 (16)	0.0075 (13)	0.0056 (15)
C10	0.0260 (16)	0.0457 (19)	0.0282 (16)	-0.0028 (14)	0.0122 (13)	-0.0058 (14)
C11	0.0214 (15)	0.0256 (14)	0.0280 (15)	0.0008 (11)	0.0041 (12)	-0.0027 (12)
C12	0.038 (2)	0.0282 (17)	0.051 (2)	-0.0059 (14)	0.0126 (17)	0.0031 (16)

Geometric parameters (Å, °)

O1—C11	1.411 (3)	C3—H3A	0.9500
O1—C12	1.423 (4)	C4—H4A	0.9500
N1—N2	1.356 (3)	C5—C6	1.405 (5)
N1—C4	1.357 (4)	C5—H5A	0.9500
N1—C1	1.448 (3)	C6—C7	1.355 (5)
N2—C2	1.335 (4)	C6—H6A	0.9500
N3—N4	1.363 (4)	C7—H7A	0.9500
N3—C7	1.365 (4)	C8—C9	1.394 (5)
N3—C1	1.454 (3)	C8—H8A	0.9500
N4—C5	1.323 (4)	C9—C10	1.369 (5)
N5—C10	1.354 (4)	C9—H9A	0.9500
N5—N6	1.364 (3)	C10—H10A	0.9500
N5—C1	1.452 (4)	C11—H11A	0.9900
N6—C8	1.327 (4)	C11—H11B	0.9900
C1—C11	1.534 (4)	C12—H12A	0.9800
C2—C3	1.402 (5)	C12—H12B	0.9800
C2—H2A	0.9500	C12—H12C	0.9800
C3—C4	1.369 (4)		
C11—O1—C12	114.0 (2)	N4—C5—H5A	124.0
N2—N1—C4	112.3 (2)	C6—C5—H5A	124.0
N2—N1—C1	121.0 (2)	C7—C6—C5	105.3 (3)
C4—N1—C1	126.7 (2)	C7—C6—H6A	127.3
C2—N2—N1	103.8 (3)	C5—C6—H6A	127.3
N4—N3—C7	111.9 (2)	C6—C7—N3	106.7 (3)
N4—N3—C1	118.8 (2)	C6—C7—H7A	126.7
C7—N3—C1	129.0 (2)	N3—C7—H7A	126.7
C5—N4—N3	104.2 (3)	N6—C8—C9	112.0 (3)
C10—N5—N6	112.0 (3)	N6—C8—H8A	124.0
C10—N5—C1	130.5 (3)	C9—C8—H8A	124.0
N6—N5—C1	117.4 (2)	C10—C9—C8	105.3 (3)
C8—N6—N5	104.1 (3)	C10—C9—H9A	127.4
N1—C1—N5	106.9 (2)	C8—C9—H9A	127.4
N1—C1—N3	109.8 (2)	N5—C10—C9	106.6 (3)
N5—C1—N3	109.0 (2)	N5—C10—H10A	126.7
N1—C1—C11	109.6 (2)	C9—C10—H10A	126.7
N5—C1—C11	110.1 (2)	O1—C11—C1	110.5 (2)
N3—C1—C11	111.3 (2)	O1—C11—H11A	109.5

N2—C2—C3	112.3 (3)	C1—C11—H11A	109.5
N2—C2—H2A	123.8	O1—C11—H11B	109.5
C3—C2—H2A	123.8	C1—C11—H11B	109.5
C4—C3—C2	104.4 (3)	H11A—C11—H11B	108.1
C4—C3—H3A	127.8	O1—C12—H12A	109.5
C2—C3—H3A	127.8	O1—C12—H12B	109.5
N1—C4—C3	107.1 (3)	H12A—C12—H12B	109.5
N1—C4—H4A	126.4	O1—C12—H12C	109.5
C3—C4—H4A	126.4	H12A—C12—H12C	109.5
N4—C5—C6	112.0 (3)	H12B—C12—H12C	109.5
C4—N1—N2—C2	0.6 (3)	N4—N3—C1—C11	-165.4 (3)
C1—N1—N2—C2	177.0 (3)	C7—N3—C1—C11	21.3 (4)
C7—N3—N4—C5	-1.0 (4)	N1—N2—C2—C3	-0.1 (3)
C1—N3—N4—C5	-175.4 (3)	N2—C2—C3—C4	-0.4 (4)
C10—N5—N6—C8	0.5 (3)	N2—N1—C4—C3	-0.9 (3)
C1—N5—N6—C8	178.0 (2)	C1—N1—C4—C3	-177.1 (3)
N2—N1—C1—N5	144.6 (2)	C2—C3—C4—N1	0.8 (3)
C4—N1—C1—N5	-39.6 (4)	N3—N4—C5—C6	0.9 (4)
N2—N1—C1—N3	-97.3 (3)	N4—C5—C6—C7	-0.5 (5)
C4—N1—C1—N3	78.6 (3)	C5—C6—C7—N3	-0.2 (4)
N2—N1—C1—C11	25.2 (3)	N4—N3—C7—C6	0.8 (4)
C4—N1—C1—C11	-158.9 (3)	C1—N3—C7—C6	174.4 (3)
C10—N5—C1—N1	115.6 (3)	N5—N6—C8—C9	-0.2 (3)
N6—N5—C1—N1	-61.3 (3)	N6—C8—C9—C10	-0.2 (4)
C10—N5—C1—N3	-3.0 (4)	N6—N5—C10—C9	-0.6 (3)
N6—N5—C1—N3	-179.9 (2)	C1—N5—C10—C9	-177.7 (3)
C10—N5—C1—C11	-125.4 (3)	C8—C9—C10—N5	0.4 (3)
N6—N5—C1—C11	57.7 (3)	C12—O1—C11—C1	-124.7 (3)
N4—N3—C1—N1	-43.9 (3)	N1—C1—C11—O1	173.5 (2)
C7—N3—C1—N1	142.8 (3)	N5—C1—C11—O1	56.2 (3)
N4—N3—C1—N5	72.9 (3)	N3—C1—C11—O1	-64.8 (3)
C7—N3—C1—N5	-100.4 (3)		

Hydrogen-bond geometry (\AA , $^\circ$)

$D-H\cdots A$	$D-H$	$H\cdots A$	$D\cdots A$	$D-H\cdots A$
C5—H5A \cdots N2 ⁱ	0.95	2.51	3.453 (4)	171
C9—H9A \cdots N2 ⁱⁱ	0.95	2.61	3.433 (4)	145
C4—H4A \cdots O1 ⁱⁱⁱ	0.95	2.53	3.444 (4)	162

Symmetry codes: (i) $x, -y+1, z+1/2$; (ii) $x, y, z+1$; (iii) $x+1/2, -y+1/2, z+1/2$.