



6-1-2013

## Bioactive Lipids and Cationic Antimicrobial Peptides as New Potential Regulators for Trafficking of Bone Marrow-Derived Stem Cells in Patients with Acute Myocardial Infarction

Anush V. Karapetyan  
*University of Kentucky*

Yuri M. Klyachkin  
*University of Kentucky*

Samy Selim  
*University of Kentucky*

Manjula Sunkara  
*University of Kentucky*

Khaled M. Ziada  
*University of Kentucky*

Follow this and additional works at: [https://uknowledge.uky.edu/internalmedicine\\_facpub](https://uknowledge.uky.edu/internalmedicine_facpub)

 Part of the [Medicine and Health Sciences Commons](#)  
*See next page for additional authors*

[Right click to open a feedback form in a new tab to let us know how this document benefits you.](#)

---

### Repository Citation

Karapetyan, Anush V.; Klyachkin, Yuri M.; Selim, Samy; Sunkara, Manjula; Ziada, Khaled M.; Cohen, Donald A.; Zuba-Surma, Ewa K.; Ratajczak, Janina; Smyth, Susan S.; Ratajczak, Mariusz Z.; Morris, Andrew J.; and Abdel-Latif, Ahmed, "Bioactive Lipids and Cationic Antimicrobial Peptides as New Potential Regulators for Trafficking of Bone Marrow-Derived Stem Cells in Patients with Acute Myocardial Infarction" (2013). *Internal Medicine Faculty Publications*. 30.  
[https://uknowledge.uky.edu/internalmedicine\\_facpub/30](https://uknowledge.uky.edu/internalmedicine_facpub/30)

This Article is brought to you for free and open access by the Internal Medicine at UKnowledge. It has been accepted for inclusion in Internal Medicine Faculty Publications by an authorized administrator of UKnowledge. For more information, please contact [UKnowledge@lsv.uky.edu](mailto:UKnowledge@lsv.uky.edu).

---

# Bioactive Lipids and Cationic Antimicrobial Peptides as New Potential Regulators for Trafficking of Bone Marrow-Derived Stem Cells in Patients with Acute Myocardial Infarction

Digital Object Identifier (DOI)

<http://dx.doi.org/10.1089/scd.2012.0488>

## Notes/Citation Information

Published in *Stem Cells and Development*, v. 22, no. 11, p. 1645-1656.

This is a copy of an article published in the *Stem Cells and Development* (c), 2013, copyright Mary Ann Liebert, Inc.; *Stem Cells and Development* is available online at: <http://online.liebertpub.com>.

## Authors

Anush V. Karapetyan, Yuri M. Klyachkin, Samy Selim, Manjula Sunkara, Khaled M. Ziada, Donald A. Cohen, Ewa K. Zuba-Surma, Janina Ratajczak, Susan S. Smyth, Mariusz Z. Ratajczak, Andrew J. Morris, and Ahmed Abdel-Latif

# Bioactive Lipids and Cationic Antimicrobial Peptides as New Potential Regulators for Trafficking of Bone Marrow-Derived Stem Cells in Patients with Acute Myocardial Infarction

Anush V. Karapetyan,<sup>1,2,\*</sup> Yuri M. Klyachkin,<sup>1,2,\*</sup> Samy Selim,<sup>1,2</sup> Manjula Sunkara,<sup>1,2</sup> Khaled M. Ziada,<sup>1,2</sup> Donald A. Cohen,<sup>3</sup> Ewa K. Zuba-Surma,<sup>4,5</sup> Janina Ratajczak,<sup>4</sup> Susan S. Smyth,<sup>1,2</sup> Mariusz Z. Ratajczak,<sup>4,6</sup> Andrew J. Morris,<sup>1,2</sup> and Ahmed Abdel-Latif<sup>1-3</sup>

Acute myocardial infarction (AMI) triggers mobilization of stem cells from bone marrow (BM) into peripheral blood (PB). Based on our observation that the bioactive sphingophospholipids, sphingosine-1 phosphate (S1P), and ceramide-1 phosphate (C1P) regulate trafficking of hematopoietic stem cells (HSCs), we explored whether they also direct trafficking of non-hematopoietic stem cells (non-HSCs). We detected a 3–6-fold increase in circulating CD34+, CD133+, and CXCR4+ lineage-negative (Lin<sup>-</sup>)/CD45<sup>-</sup> cells that are enriched in non-HSCs [including endothelial progenitors (EPCs) and very small embryonic-like stem cells (VSELs)] in PB from AMI patients ( $P < 0.05$  vs. controls). Concurrently, we measured a ~3-fold increase in S1P and C1P levels in plasma from AMI patients. At the same time, plasma obtained at hospital admission and 6 h after AMI strongly chemoattracted human BM-derived CD34+/Lin<sup>-</sup> and CXCR4+/Lin<sup>-</sup> cells in Transwell chemotaxis assays. This effect of plasma was blunted after depletion of S1P level by charcoal stripping and was further inhibited by the specific S1P1 receptor antagonist such as W146 and VPC23019. We also noted that the expression of S1P receptor 1 (S1P1), which is dominant in naïve BM, is reduced after the exposure to S1P at concentrations similar to the plasma S1P levels in patients with AMI, thus influencing the role of S1P in homing to the injured myocardium. Therefore, we examined mechanisms, other than bioactive lipids, that may contribute to the homing of BM non-HSCs to the infarcted myocardium. Hypoxic cardiac tissue increases the expression of cathelicidin and  $\beta$ -2 defensin, which could explain why PB cells isolated from patients with AMI migrated more efficiently to a low, yet physiological, gradient of stromal-derived factor-1 in Transwell migration assays. Together, these observations suggest that while elevated S1P and C1P levels early in the course of AMI may trigger mobilization of non-HSCs into PB, cathelicidin and  $\beta$ -2 defensin could play an important role in their homing to damaged myocardium.

## Introduction

ACUTE MYOCARDIAL INFARCTION (AMI) leads to ischemic heart disease (IHD) and is one of the most prevalent causes of death and morbidity in the United States and worldwide [1–3]. Despite significant advances in medical therapy and interventional strategies, the prognosis of millions of patients with AMI and IHD remains dismal [4,5]. Currently, there are no therapies that can replace the infarcted myocardium, and therapies are mostly symptomatic. The

shortage of donor hearts available for transplantation creates a need to develop new myocardial regenerative strategies, including stem cell therapies.

Cardiomyocytes undergo continuous renewal, maintained at least in part by bone marrow (BM)-derived cells [6–8]. We focused our studies on non-hematopoietic stem cells (non-HSCs) that include populations such as CD34+, CD133+, and CXCR4+ lineage-negative (Lin<sup>-</sup>)/CD45<sup>-</sup> cells, as they are enriched in very small embryonic-like stem cells (VSELs) [9–11]. While the mechanisms of cardiomyocyte renewal are

<sup>1</sup>Gill Heart Institute and Division of Cardiovascular Medicine, University of Kentucky, Lexington, Kentucky.

<sup>2</sup>Lexington VA Medical Center, Lexington, Kentucky.

<sup>3</sup>Department of Immunology, Microbiology and Molecular Genetics, University of Kentucky, Lexington, Kentucky.

<sup>4</sup>Stem Cell Biology Institute, James Graham Brown Cancer Center, University of Louisville, Louisville, Kentucky.

<sup>5</sup>Department of Cell Biology, Faculty of Biochemistry, Biophysics and Biotechnology, Jagiellonian University, Krakow, Poland.

<sup>6</sup>Department of Physiology, Pomeranian Medical University, Szczecin, Poland.

\*These two authors contributed equally to the article.

poorly understood, this process is capable of renewing up to half of the cardiomyocytes during the normal life span [12]. In rodents, this phenomenon is dynamic, responds to myocardial injury [13], and is maintained, at least in part, by BM-derived cells [14]. AMI initiates innate reparatory mechanisms through which non-HSCs are mobilized from BM into peripheral blood (PB) and chemoattracted to the ischemic myocardium, a process that can potentially contribute to myocardial regeneration as we and others have demonstrated [15–20]. Nevertheless, very little is known about the underlying mechanism and clinical significance of this mobilization phenomenon. Clinical studies investigating stem cell mobilization as a strategy to augment repair of the infarcted myocardium have achieved limited success, probably as result of the low number of mobilized non-HSCs homing to damaged heart tissue [21–24].

Similarly, the process of recruitment of stem cells from BM into PB itself is still not fully understood. The  $\alpha$ -chemokine stromal derived factor-1 (SDF-1) has been identified as a potent stem cell chemoattractant present in PB plasma [25]. Recently, however, other factors, notably bioactive lipids—sphingosine-1 phosphate (S1P) and ceramide-1 phosphate (C1P), have been identified in PB as major HSCs chemoattractants that enhance their egress from BM into PB [26–29]. SDF-1 has been also reported to become up-regulated in hypoxia inducible factor-1 $\alpha$  (HIF-1 $\alpha$ ) manner at sites of organ tissue injury (eg, in infarcted myocardium) [30–32]. While a role for the SDF-1/CXCR4 axis in stem cell trafficking is undisputed, its exclusive role in homing to a highly proteolytic microenvironment, such as the ischemic/infarcted myocardium, is less established, and redundant mechanisms may exist [27,33,34]. The limited contribution of SDF-1 to myocardial regeneration may be explained by its active degradation at the sites of inflammation and myocardial infarction by metalloproteinases [33,35,36]. However, as recently demonstrated, despite SDF-1 degradation by proteases, the chemotactic responsiveness of HSCs to even low SDF-1 gradient could be significantly enhanced by members of the family of cationic antimicrobial peptides (CAMPs), including products of complement cascade (CC) activation— anaphylatoxin C3a [37–40] and fibroblast- and leukocyte-derived-cathelicidin and  $\beta$ -2 defensin [41]. Thus, an increase in the level of CAMPs at sites of injury enhances the responsiveness of stem cells to even very low levels of SDF-1.

Based on the above literature, we hypothesized and show for the first time that bioactive lipids (S1P and C1P) and elements of the innate immune system (cathelicidin and  $\beta$ -2 defensin) are up-regulated during AMI and can potentially contribute to mobilization of non-HSCs from BM into PB followed by their homing to the ischemic myocardium.

## Materials and Methods

The study population consisted of 40 patients with acute ST-elevation myocardial infarction (STEMI). We enrolled 30 age- and sex-matched subjects to the study population into the control (CTRL) group. The CTRL group is asymptomatic with no history of coronary artery disease but with a similar risk factor profile to the STEMI group. Patients with STEMI were referred within 12 h of symptom onset for primary percutaneous coronary intervention (PPCI). Patients were excluded if they had a systemic inflammatory process,

cancer, recent motor vehicle accident, recent surgery, active infection, history of MI or revascularization [coronary artery bypass graft, percutaneous coronary intervention (PCI)], unsuccessful revascularization, or onset of the symptoms > 12 h. PB samples (3 mL of PB each) were obtained at presentation in all patients baseline denoting the time of arrival to the hospital (BSL) followed by samples at 6, 12, 24, and 48 after PCI, and only PPCI patients were enrolled. BM samples were obtained from normal individuals, and the BM cells were examined by smear and flow cytometry for any pathological findings before being utilized in the chemotaxis experiments. The study protocol complies with the Declaration of Helsinki and was approved by the institutional ethics committee. All patients provided written informed consent.

## Quantitation of C1P and S1P

PB samples were obtained in ethylenediaminetetraacetic acid tubes, and plasma was isolated by centrifuging whole blood for 10 min at 800g. Supernatant was then removed and centrifuged at 9,400g for 10 min to remove platelets, and the supernatant was then used for lipid measurements. RBCs were isolated using the leukocyte depletion kit (Pall, Inc., East hills, NY) and purified by centrifuging at 600g for 10 min followed by washing in normal saline at the same speed. To assess the effect of activated complement on S1P and C1P release, RBCs were incubated for 3 h at 37°C with saline, an antibody against RBCs alone (BD Biosciences, San Jose, CA), normal human serum complement alone at a 1:5 dilution (Quidel, Santa Clara, CA), or antibody and complement together. Lipids were extracted from plasma, supernatant, and RBCs using acidified organic solvents, as previously described [42]. An analysis of S1P and C1P was carried out using a Shimadzu UFLC coupled with an AB Sciex 4000-Qtrap hybrid linear ion trap triple quadrupole mass spectrometer in multiple reaction monitoring mode as previously described [43]. The mobile phase consisted of 75/25 of methanol/water with formic acid (0.5%) and 5 mM ammonium formate (0.1%) as solvent A and 99/1 of methanol/water with formic acid (0.5%) and 5 mM ammonium formate (0.1%) as solvent B. For the analysis of various C1P species, the separation was achieved by maintaining 75% of solvent B for 3 min, then increasing to 100% B over the next 3 min, and maintaining at 100% B for the last 18 min. The column was equilibrated back to the initial conditions in 3 min. The flow rate was 0.5 mL/min with a column temperature of 60°C. The sample injection volume was 10  $\mu$ L. The mass spectrometer was operated in the positive electrospray ionization mode with optimal ion source settings determined by synthetic standards with a declustering potential of 46 V, entrance potential of 10 V, collision energy of 19 V, collision cell exit potential of 14 V, curtain gas of 30 psi, ion spray voltage of 5,500 V, ion source gas1/gas2 of 40 psi, and temperature of 550°C.

## Flow cytometric analysis and fluorescence-activated cell sorting of circulating primitive stem cells from PB

Erythrocytes were lysed twice using BD Pharm Lyse lysing buffer (BD Biosciences) at room temperature for 10 min and subsequently washed in phosphate-buffered saline (PBS)

to yield total nucleated cells (TNCs). TNCs were subsequently stained for hematopoietic lineages markers (Lin) using the following fluorescein isothiocyanate-conjugated antibodies (Abs) against humans: CD2 (clone RPA-2.10); CD3 (clone UCHT1); CD14 (clone M5E2); CD16 (clone 3G8); CD19 (clone HIB19); CD24 (clone ML5); CD56 (clone NCAM16.2); CD66b (clone G10F5); and CD235a (clone GA-R2). These Abs were purchased from BD Biosciences. The cells were simultaneously stained for the panleukocytic marker—CD45 (PE-Cy7-conjugated Abs, clone HI30; BD Biosciences) and one of the following antigens: CXCR4 (APC-conjugated Abs, clone 12G5; BD Biosciences), CD34 (APC-conjugated Abs, clone 581; BD Biosciences), CD133 (CD133/1, APC-conjugated Abs; Miltenyi Biotec, Auburn, CA), S1P receptor-1 (PE-conjugated Abs, clone 218713; R&D Systems, Minneapolis, MN), and S1P3 (primary antibody followed by a secondary antibody labeled with PE-Cy7; Santa Cruz Biotechnology, Santa Cruz, CA). Staining was performed in PBS with 2% fetal bovine serum (FBS; Invitrogen, Carlsbad, CA) at 4°C for 30 min. Cells were subsequently washed, re-suspended, and analyzed using an LSR II (BD Biosciences). At least  $10^6$  events were acquired from each sample. The absolute numbers of circulating stem cells were calculated (individually for each patient) per 1  $\mu$ L of PB based on the percentage content of these cells detected by flow cytometry and the absolute number of white blood cells per 1  $\mu$ L of PB. FlowJo software was used for the analysis (Tree Star, Ashland, OR).

### Chemotaxis assays

Cell migration assays were performed using the chemotactic (Boyden) chamber (Neuroprobe, Gaithersburg, MD). BM- and PB-derived cells were lysed as described earlier. Cells were then suspended in S1P free medium (RPMI with 0.1% FBS) for 3 h before the migration assays. The lower chambers were loaded with CTRLs or the testing agents. Cell suspension ( $1 \times 10^6$  cells/100  $\mu$ L) was loaded into the upper chambers on a 5  $\mu$ m membrane; the chambers were incubated (37°C, 95% humidity, and 5% CO<sub>2</sub>) for 3 h; and subsequently, cells in the lower chambers were harvested, stained against the lineage markers CD34 and CXCR4 as detailed earlier, and counted by fluorescence-activated cell sorting. The lower chambers contained no chemoattractant medium—Vehicle (RPMI medium with 0.1% FBS, ie, CTRL) or plasma isolated from STEMI patients during the peak mobilization of stem cells. To examine the role of bioactive lipids in inducing BM-derived stem cell migration, simultaneous experiments utilizing charcoal-stripped plasma in the lower chamber were performed. Similar to examining the role of S1P1 in this mobilization, BM-derived cells were incubated with 10  $\mu$ M of the selective S1P1 receptor antagonist W146 at 10  $\mu$ M (Cayman Chemicals, Ann Arbor, MI) or VPC23019 at 10  $\mu$ M (Avanti Polar Lipids, Alabaster, AL) for 1 h before the migration assay. To examine the role of LL37 in PBCs migration, PB cells isolated from patients with AMI ( $1 \times 10^6$  cells/100  $\mu$ L) were loaded in the upper chambers. The lower chamber was loaded with RPMI medium with 0.1% FBS alone or supplemented with SDF-1 at 2 ng/mL (PeproTech, Rocky Hills, NJ) alone, LL37 at 2.5 ng/mL (AnaSpec, Fremont, CA) alone, or the combination of SDF-1 (2 ng/mL) and LL37 (2.5 ng/mL). Chemotaxis in these experiments was conducted as detailed

earlier. All migration results are reported as fold migration compared with CTRLs.

### Myocardial ischemia and cardiac fibroblast isolation experiments

Six C57/B6 mice were utilized in the myocardial hypoxia experiments. Hearts were excised and cannulated for the Langendorff apparatus, using perfusion buffer containing 4.7 mM K<sup>+</sup> and 1.8 mM Ca<sup>++</sup>. The CTRLs were allowed to beat for 50 min in warmed and oxygenated perfusion buffer and then removed, and left ventricles were flash frozen in liquid nitrogen. The ischemic hearts were hung and allowed to beat for 5 or 6 min with flow in the warmed and oxygenated perfusion buffer; then, the flow was stopped for 30 min, and the hearts were bathed in the warmed buffer. After ischemia, flow was restarted and the hearts started beating in about 0.5–1 min after onset of flow and continued beating for 20 min to simulate reperfusion injury. The left ventricles from ischemic hearts were then flash frozen as detailed earlier. Frozen myocardial samples were utilized for the real time-polymerase chain reaction (RQ-PCR) experiments.

Cardiac fibroblasts were isolated from C57/B6 mice after sacrificing mice and isolating the hearts. Left ventricular tissues were minced into small pieces (less than 1 mm in diameter) using razor blades. The minced left ventricular tissues were incubated with HBSS solution (Invitrogen) containing glucose, NaCl, KCl, and NaHCO<sub>3</sub>; and supplemented with diaspase and collagenase B (Roche, Indianapolis, IN) for 30 min followed by washing twice. Cell pellets were incubated overnight in Dulbecco's modified Eagle medium (Invitrogen) supplemented with 10% FBS (Thermoscientific, Waltham, MA) overnight. Floating cells were washed, and adherent cells were allowed to grow to 70%–80% confluence. Hypoxia experiments were conducted in hypoxia incubators, and cells were maintained at <1% O<sub>2</sub>, 5% CO<sub>2</sub>, and 37°C for either 2 h followed by 1 h reperfusion or 72 h hypoxia followed by reperfusion. Cells were then harvested and flash frozen for RQ-PCR.

### Statistical analysis

Data are expressed as mean  $\pm$  standard error of the means. Differences were analyzed using the unpaired Student *t*-test or analysis of variance (one way or multiple comparisons) as appropriate. Post hoc multiple comparison procedures were performed using 2-sided Dunnett or Dunn tests as appropriate with CTRL samples as the CTRL category. The significance level throughout the analyses was chosen to be 0.05. All statistical analyses were performed using the SPSS (version 16) statistical software (SPSS, Inc., Chicago, IL). All authors had full access to and took full responsibility for the integrity of the data. All authors have read and agreed with the article as written.

## Results

### Concurrent temporal elevation of plasma S1P and C1P levels and non-HSCs numbers in PB after AMI

Our recent studies demonstrated the critical role of bioactive lipids such as S1P and C1P in the mobilization and homing of BM-derived HSCs [27,28]. Since we expect that

similar mechanisms are involved in the release of non-HSCs from their BM niches in AMI, we examined the changes in S1P levels in PB plasma after acute myocardial injury and as compared with CTRLs. Figure 1 shows that, in comparison to CTRLs, the levels of the bioactive lipid S1P were elevated after AMI, particularly in the early phases after myocardial ischemia and started decreasing after successful revascularization. The level of S1P increased 3 fold to  $0.31 \pm 0.02 \mu\text{M}$  as compared with  $0.14 \pm 0.02$  in CTRLs ( $P < 0.01$ ). S1P levels then decreased after 6 h from the acute event but continued to be elevated at 48 h compared with CTRLs (Fig. 1). In whole blood, RBCs and platelets contain significantly higher levels of S1P and C1P compared with plasma (Fig. 2A). Release of S1P and C1P from RBCs could, therefore, account for higher plasma levels in the setting of AMI. Activation of CC and the resultant generation of C5b-C9 (membrane attack complex) may enhance release of S1P from RBCs. The CC was activated in AMI patients [44–48], and in our AMI population, C5b-C9 levels were elevated in serum (Supplementary Fig. S1; Supplementary Data are available online at [www.liebertpub.com/scd](http://www.liebertpub.com/scd)). On incubation with activated CC components, RBCs released S1P and C1P in a manner that could account for the elevated plasma levels of S1P and C1P in plasma of AMI patients (Fig. 2B, C). The higher plasma levels at BSL may also reflect the release of C1P from damaged cardiomyocytes as recently shown in the murine model of acute heart ischemia [48]. However, the role of C1P in non-HSC mobilization requires further studies, given the limited and transient increase in its levels and somehow the lack of temporal correlation with the number of mobilized non-HSCs. It is important to mention that there are no receptors identified for C1P, and, thus, receptor knockout or receptor-blocking experiments are not possible at this time. Nonetheless, our recent data in mice suggest an important cooperative role of bioactive lipids in the egress from BM of endothelial progenitor cells (EPCs), mesenchymal stem cells (MSCs), and VSELs and the subsequent homing of these circulating cells to the damaged heart tissue [26].

We observed a temporal correlation between the elevation in plasma levels of bioactive lipids and the peak mobilization of non-HSCs after acute myocardial injury (Fig. 3A–C). The absolute numbers of non-HSCs populations such as  $\text{Lin}^-/\text{CD45}^-/\text{CD34}^+$ ,  $\text{Lin}^-/\text{CD45}^-/\text{CXCR}^+$ , and  $\text{Lin}^-/\text{CD45}^-/\text{CD133}^+$  cells peaked at the early stages after myocardial ischemia ( $4.8 \pm 1.3$  vs.  $0.7 \pm 0.04$  cells/ $\mu\text{L}$  of PB,  $8.6 \pm 2.5$  vs.  $0.7 \pm 0.06$  cells/ $\mu\text{L}$  of PB, and  $1.7 \pm 0.5$  vs.  $0.6 \pm 0.03$  cells/ $\mu\text{L}$  of PB 6 h after presentation in STEMI patients vs. CTRLs respectively,  $P < 0.05$ ). This mobilization correlated with the early elevation of plasma levels of S1P and total C1P, thus suggesting a chemotactic role for bioactive lipids.

#### BM-derived stem cells express S1P receptors

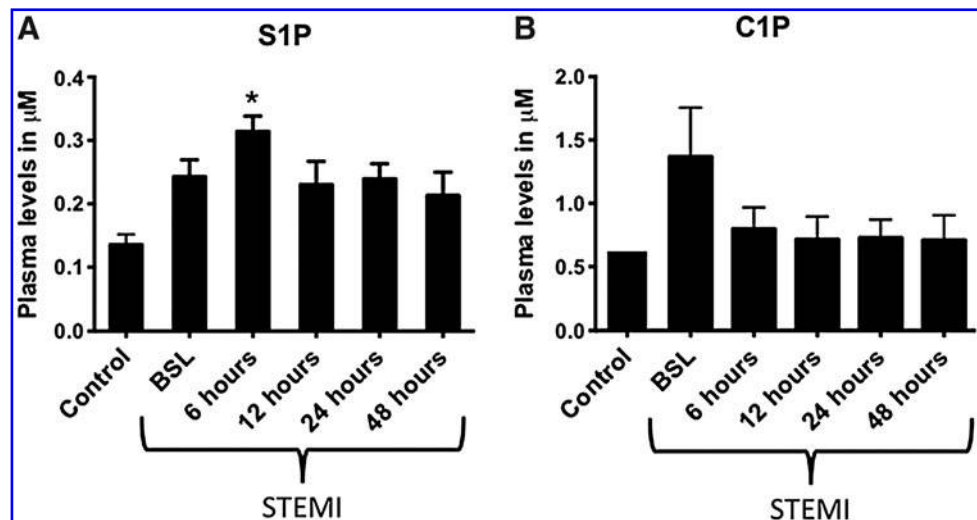
Given the potential role of bioactive lipids in the mobilization of non-HSCs, we examined the expression of various S1P receptors (S1Prs) on the surface of bone marrow stem and progenitor cells (BMSPCs) isolated from normal individuals and found high expression of type 1 and type 3 S1P receptors—S1Pr1 and S1Pr3 respectively (Fig. 4). These receptors play an important role in trafficking of lympho/hematopoietic cells [49,50].

We focused on the subset of BM-derived cells  $\text{Lin}^-/\text{CD34}^+$  cells that are enriched in stem and progenitor cells, and flow cytometry analysis revealed that  $\text{Lin}^-/\text{CD34}^+$  express both S1Pr1 ( $14.7\% \pm 1.4\%$ ) and S1Pr3 ( $9.9\% \pm 0.9\%$ ) (Fig. 4). Furthermore and as described with lympho/hematopoietic cells [51,52], this expression was dynamic, and both receptors were internalized in the presence of S1P (Fig. 4). The expression of S1Prs on PB lineage-negative cells in the early phases after AMI was significantly lower than in their counterparts isolated from the BM (data not shown). The increased level of plasma S1P could explain the possible internalization of S1Prs on circulating peripheral blood stem and progenitor cells (PBSPCs). Of note, since C1P receptors are not yet identified, we could not perform similar receptor expression studies for this bioactive lipid.

#### BM-derived stem cells migrate toward plasma isolated from acute myocardial ischemia patients in an S1P-dependent manner

Since the plasma levels of S1P were elevated simultaneously with the peak mobilization of non-HSCs at 6 h after revascularization, we sought to examine the role of bioactive lipids in the migration of BMSPCs using in vitro migration assays. Figure 5A and B shows that  $\text{Lin}^-/\text{CD34}^+$  and

**FIG. 1.** Elevated levels of bioactive lipids at early times after AMI. Bar graphs showing the plasma levels of sphingosine-1 phosphate (A) and ceramide-1 phosphate (B) in patients with STEMI and controls; showing peak levels early in STEMI patients. ( $*P < 0.05$  as compared with controls). AMI, acute myocardial infarction; BSL, baseline denoting the time of arrival to the hospital; C1P, ceramide-1 phosphate; S1P, sphingosine-1 phosphate; STEMI, ST-elevation myocardial infarction.



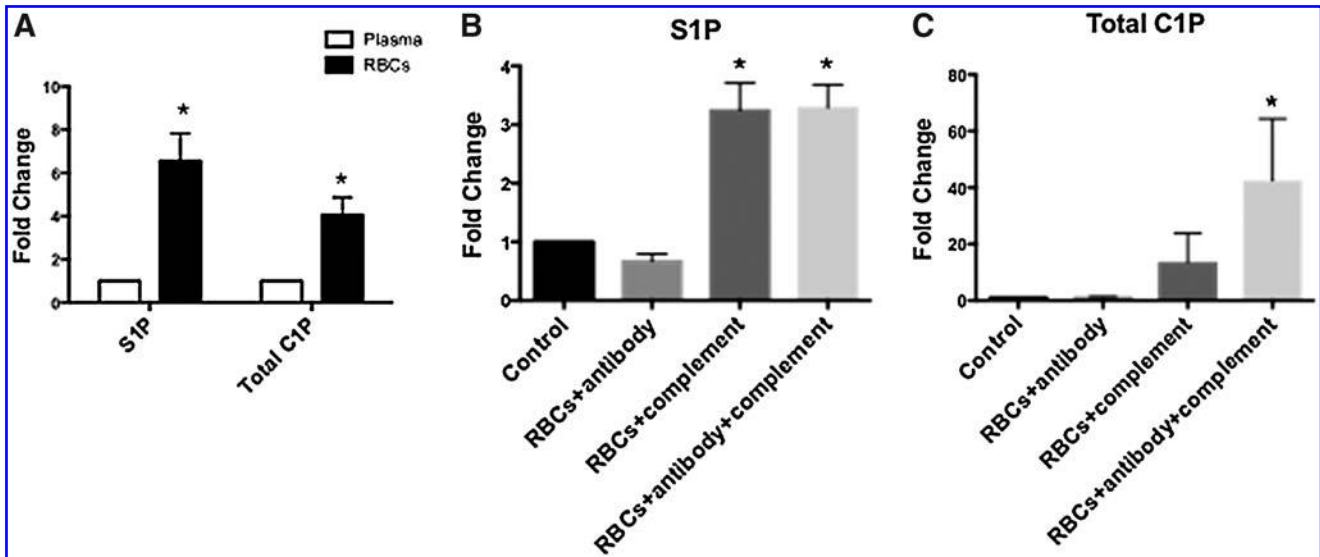


FIG. 2. RBCs contain high concentrations of bioactive lipids that are released on complement activation. Bar graphs showing the content of S1P in the plasma and purified RBCs (A). Content of S1P and C1P is significantly higher in the RBCs compartment compared with plasma. On incubation with activated complement and activated complement together with antibodies against RBCs, cells release both S1P (B) and C1P (C). (\**P*<0.05 as compared with plasma or control). C1P, ceramide-1 phosphate; RBCs, red blood cells; S1P, sphingosine-1 phosphate.

Lin<sup>-</sup>/CXCR4<sup>+</sup> BMSCs migrate toward intact plasma isolated from STEMI patients at the peak mobilization of non-HSCs. This migration was inhibited by delipidation of the plasma (charcoal stripping), which removed >90% of the S1P (Supplementary Fig. S2). In addition, pretreatment of BM cells with the selective S1Pr1 antagonist, W146 (10 μM), or the S1Pr1/S1Pr3 receptor antagonist, VPC23019 (10 μM) also significantly reduced the migration of BM cells toward plasma from AMI patients. Neither W146 nor VC23019 altered cell viability (Supplementary Fig. S3). These data in total support a potential role for bioactive lipids present in the plasma of STEMI patients in the mobilization and

egress of stem cells from the BM to the PB. Our data demonstrate multiple mechanisms responsible for stem cell mobilization and homing in ischemic heart injury. For instance, we noted increased expression of CXCR4 on mobilized PB endothelial cells and cardiac fibroblasts under hypoxic conditions that may facilitate these phenomena (data not shown). Furthermore, exposure to S1P at 250 nM increases the expression of CXCR4 on circulating mobilized EPCs, which suggest an important interplay between bioactive lipids and CXCR4 that can orchestrate stem cell mobilization and homing in ischemic conditions as has been recently shown [53].

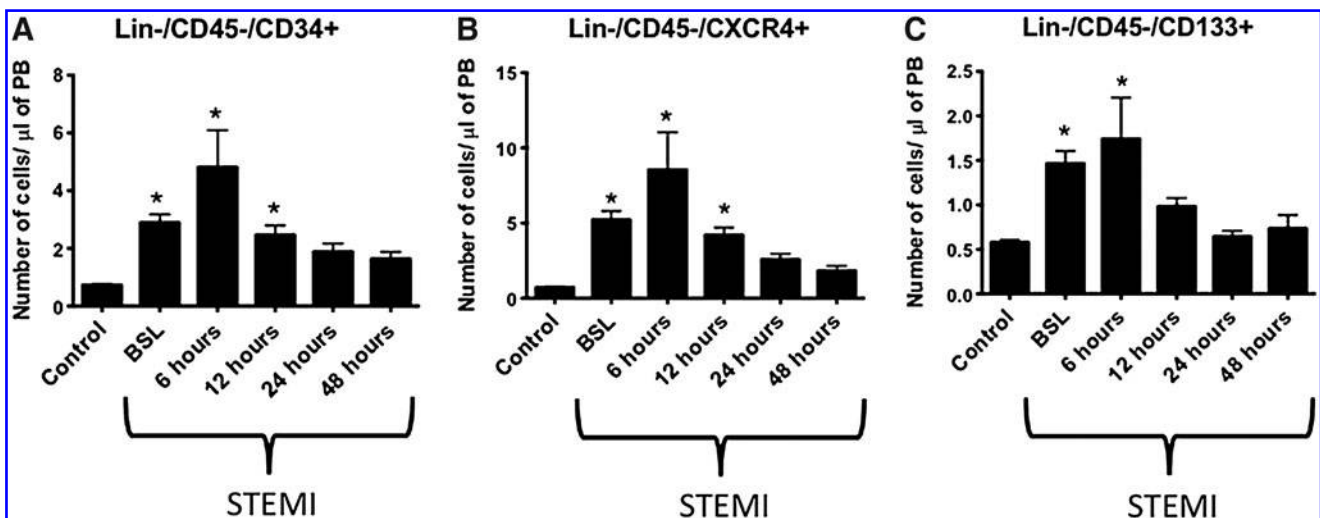
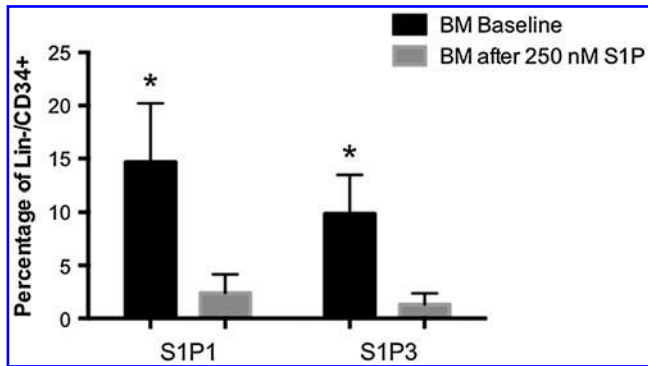


FIG. 3. Temporal increase in number of circulating BMSPCs at early times after AMI. Bar graphs showing the absolute numbers of circulating non-hematopoietic stem cells (Lin<sup>-</sup>/CD45<sup>-</sup>/CD34<sup>+</sup> (A), CXCR4<sup>+</sup> (B), and CD133<sup>+</sup> (C)) enriched in very small embryonic-like stem cells in the PB of AMI patients and controls; showing a peak mobilization early in STEMI patients. (\**P*<0.05 as compared with controls). PB, peripheral blood; BMSPCs, bone marrow stem and progenitor cells.



**FIG. 4.** S1P receptors are expressed in naïve BMSPCs, and surface expression is reduced after exposure to S1P. Bar graphs showing the expression of S1P receptor 1 and 3 on the surface of BM-derived Lin<sup>-</sup>/CD34<sup>+</sup> stem cells. The graphs show a relatively higher expression of S1P receptors in the BM stem cells that are reduced significantly after 2 h exposure to S1P (250 nM) (\**P* < 0.05 as compared with controls). BM, bone marrow.

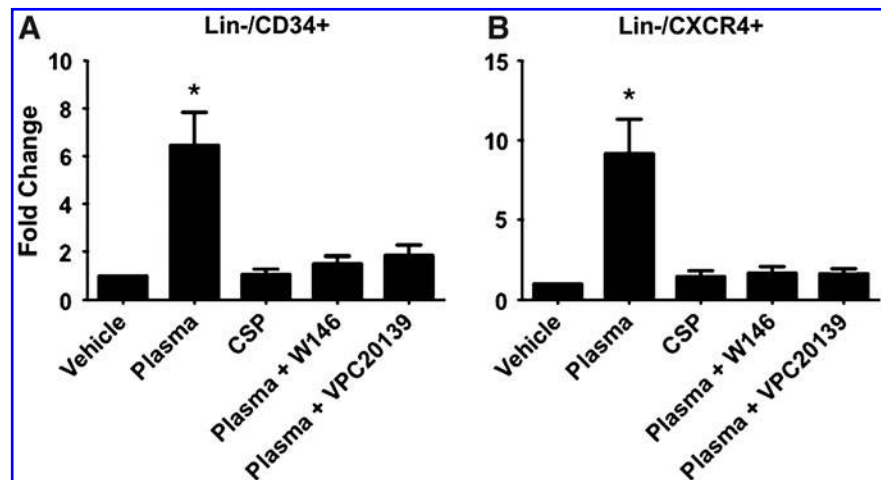
*Ischemic cardiac tissues express antimicrobial cationic peptides cathelicidin and  $\beta$ -2 defensin that enhance responsiveness of circulating in PB cells to SDF-1 gradient*

Our data highlighted the potential role of S1P and the dynamic expression of its receptors in the chemotaxis of non-HSCs from the BM to the PB in the setting of AMI (Figs. 1–5). However, the reduced expression of S1Pr1 and S1Pr3 after exposure to S1P levels similar to those encountered in the PB (~250  $\mu$ M) in the early phases after AMI (Fig. 4) suggest that other mechanisms than those involving bioactive lipids may be involved in their homing from PB to the myocardium. To support this further, previous experiments have indicated that S1P lyase activity is increased in the ischemic myocardium, thus leading to S1P degradation, lower local levels of S1P, and myocardial injury [54]. Therefore, it is unlikely that S1P will play a major role in the homing of circulating non-HSCs to myocardium.

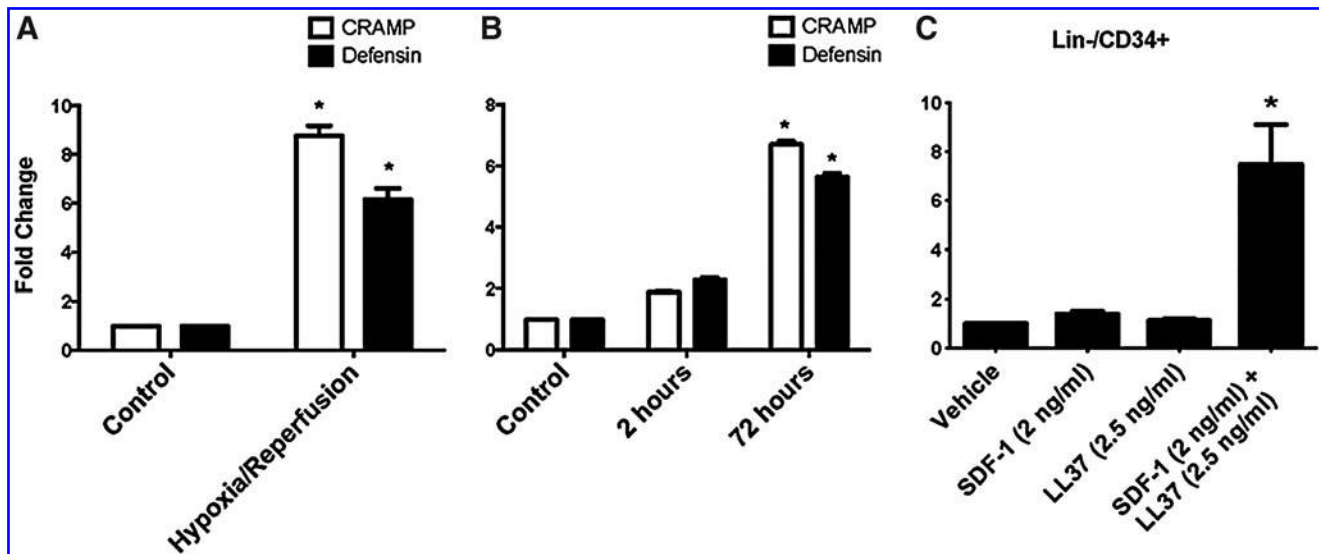
Several reports suggest the involvement of the SDF-1 that is up-regulated in HIF-1 $\alpha$  manner in infarcted myocardium in homing of stem cells to damaged heart tissues [55]. However, since infarcted myocardium is enriched in proteolytic enzymes [eg, metalloproteinases—matrix metalloproteinases (MMPs)] [56] that degrade SDF-1 [35,36], its actual chemotactic gradient is usually low. As we have recently demonstrated, despite SDF-1 degradation by MMPs, the chemotactic responsiveness of stem cells to even low SDF-1 gradient could be significantly enhanced by members of the family of CAMPs, including products of CC activation—anaphylatoxin C3a [57] and fibroblast- and leukocyte-derived cathelicidin and  $\beta$ -2 defensin [41]. Given the above data, we investigated the expression and potential role of CAMPs in homing of non-HSCs into infarcted myocardium.

Our assessment of the CC activation indicates that the time course of this process correlated with our observation of the peak elevation of S1P (Supplementary Fig. S1). Thus, activation of CC may simultaneously release C3a in the plasma that enhances responsiveness of BM cells to low SDF-1 gradient. Next, we investigated whether the myocardium expresses 2 other CAMPs (cathelicidin and  $\beta$ -2 defensin) whose expression is regulated by hypoxia. To address this question, we first employed the langendorff apparatus, and murine cardiac ventricular tissues were subjected to ischemic/reperfusion injury (30 min ischemia followed by 20 min reperfusion). Figure 6A shows increased expression of both CAMPs in hypoxia/reperfusion as compared with CTRL myocardium. We then examined cardiac fibroblasts subjected to hypoxia using a hypoxic chamber, and the expression of cathelicidin and  $\beta$ -2 defensin was measured in parallel with the expression of HIF-1 $\alpha$ . Figure 6B shows that both CAMPs were up-regulated in hypoxia. Finally, we employed Transwell chemotactic assays to examine the hypothesis that human PBSPCs respond to a low gradient of SDF-1 in the presence of cathelicidin, which was similar to our previous observations with HSCs [41]. Figure 6C shows that LL37 enhanced the migration of PB-derived Lin<sup>-</sup>/CD34<sup>+</sup> cells toward low SDF-1 gradient that is ineffective in inducing this migration by itself. Interestingly, neither C3a alone as shown in the past [39] nor LL37 alone, as

**FIG. 5.** BMSPCs migrate toward plasma from AMI patients in an S1P/S1P receptor-dependent fashion. Bar graphs showing the migration of lineage-negative (Lin<sup>-</sup>)/CD34<sup>+</sup> and CXCR4-positive cells toward plasma isolated from patients with AMI. As shown, Lin<sup>-</sup>/CD34<sup>+</sup> (A) and Lin<sup>-</sup>/CXCR4<sup>+</sup> (B) cells migrate toward plasma isolated from AMI patients at peak stem cell mobilization (\**P* < 0.05 as compared with controls). This mobilization was blunted by CSP and the use of selective S1P receptor 1 blocker (W146) and S1P receptor 1 and 3 selective blocker (VPC20139), where the number of migrated BM stem cells was not significantly different from vehicle. CSP, charcoal stripped plasma; Lin<sup>-</sup>, lineage-negative cells.







**FIG. 6.** Cardiomyocytes increase the expression of cathelicidins after ischemic injury, and cathelicidins prime BMSPCs to lower levels of SDF1. Bar graphs showing the increased mRNA expression of murine CRAMP and Defensin in murine cardiac tissues subjected to 30 min hypoxia followed by 20 min reperfusion as compared with controls (A). The expression of CRAMP and Defensin was also increased in cardiac fibroblasts subjected to 72 h of hypoxia in hypoxic chambers followed by reperfusion as compared with 2 h of hypoxia and controls (B) ( $*P < 0.05$  as compared with controls). (C) Demonstrates bar graphs for the migration of lineage-negative (Lin<sup>-</sup>)/CD34<sup>+</sup>-positive cells toward RPMI medium supplemented with 0.1% fetal bovine serum alone (Vehicle), supplemented with SDF-1 (2 ng/mL) alone, LL37 (2.5 ng/mL) alone, or SDF-1 in addition to LL37. As shown, Lin<sup>-</sup>/CD34<sup>+</sup> cells migrate in significantly higher numbers toward SDF-1 in the presence of the priming factor LL37 ( $*P < 0.05$  as compared with controls). CRAMP, cathelicidins related antimicrobial protein; SDF-1, stromal derived factor-1.

demonstrated here, was effective in inducing measurable migration of PB-derived stem cells.

## Discussion

AMI initiates multiple innate reparatory mechanisms, including the activation of the CC that is responsible for the release of bioactive lipids such as S1P and C1P from their natural reservoirs in RBCs, platelets, and local endothelial cells. In this study, we identify an important role of bioactive lipids in the mobilization of BMSPCs into the PB after AMI. We also demonstrate that AMI results in increased expression of cathelicidins in the myocardium, resulting in a potential role in priming circulating mobilized PBSPCs to physiological SDF-1 levels and, hence, potentially improving their homing to the ischemic myocardium. Taken together, these data suggest that while the levels of SDF-1 in the myocardial tissue may be influenced by the elevated levels of proteases, an increase in CAMPs level enhances the responsiveness of non-HSCs to SDF-1 gradient and may potentially be aiding in their homing. These findings underscore the therapeutic potential of strategies targeting the modulation of bioactive lipids, cathelicidins, and their receptors in BMSPCs-based myocardial regenerative studies.

It is well known that S1P is transported in PB mainly by erythrocytes and is also associated with albumin and high-density lipoprotein [58,59]. Our data show a 4–7-fold higher content of S1P and C1P in erythrocytes compared with plasma (Fig. 2). Erythrocytes can take up and release S1P, and this buffering function likely explains the  $\sim \times 25$  higher concentration of S1P in PB as compared with tissues. Innate

immune system activation after ischemic myocardial injury, including the CC [44–48], may play an important role in the release of S1P from blood cells such as activated platelets [60–62], RBCs [58,63], and endothelial cells [28,64]. We demonstrate for the first time that plasma levels of S1P and C1P are significantly elevated after AMI (Fig. 1). The elevated plasma levels of these bioactive lipids correlated with the activation of the CC as evidenced by the elevated plasma levels of C5b-9 (Supplementary Fig. S1). Furthermore, exposure of erythrocytes to activated complement ex-vivo results in the release of bioactive lipids (Fig. 2), which could explain the correlation between elevated plasma levels of S1P in the setting of AMI and systemic complement activation.

The number of circulating hematopoietic stem and progenitor cells increases in PB in response to systemic or local inflammation, strenuous exercise and stress, tissue/organ injury, and pharmacological agents. We and others have demonstrated the mobilization of BMSPCs, including VSELs, in PB shortly after acute myocardial injury [17–19,65–67]. The utilization of BM-derived populations enriched in VSELs has been previously examined in animal and human studies [68–70]. During these experiments, the regenerative capacity of VSELs has been shown to improve the left ventricular function after myocardial infarction. In the human study, the benefit was observed mostly in patients with reduced left ventricular function at baseline. Furthermore, in our initial studies characterizing VSELs, we demonstrated the cardiac differentiation capacity of BM-derived VSELs in vitro [10,71].

It is, however, important to mention that the surface markers outlined in our study are not unique to any given population of BM- or PB-derived stem cells. CD34<sup>+</sup> and

CD133+ cells isolated from the PB have been shown to differentiate into endothelial cells *in vitro* and home to ischemic limb in animal *in vivo* models [72–74]. EPCs are mobilized in the setting of ischemic cardiac injury in correlation with elevated levels of vascular endothelial growth factor (VEGF) and express CD34, CD133, VEGF receptor 2, and CXCR4 [17,18,75]. Thus, these non-HSCs represent multiple overlapping subpopulations of stem/progenitor cells such as EPCs, MSCs, and VSELs that are capable of repopulating the injured heart and aid directly or indirectly [76,77] in its regeneration.

Overall, the mobilization process has been postulated to be directed by a decrease in SDF-1–CXCR4 and VLA-4–VCAM-1 interactions in BM, reversal of the trans-endothelial chemotactic gradient between the BM microenvironment and plasma, activation of the coagulation cascade, and, finally, as recently postulated, activation of CC [27,28,40]. Interestingly, many of the earlier mentioned mechanisms and cells are activated in the setting of AMI. The CC is activated locally at sites of myocardial infarction with elevated levels of C5b-9 both in the myocardium and plasma [48]. Recent evidence suggests the role of C5b-9 and other members of the CC in the mobilization and homing of BM stem cells [28,38,39]. We demonstrate the activation of the CC in the plasma after AMI. Our experiments also indicate that the exposure of peripheral RBCs to activated complement results in the release of bioactive lipids and, thus, can explain the temporal correlation between the elevated levels of C5b-9 and bioactive lipids in the plasma of patients with AMI (Fig. 2). Taken together, these data support our hypotheses that AMI activates the CC, which, in turn, activates the release of bioactive lipids from RBCs.

Recently, S1P and C1P have been shown to be important mediators in the signaling cascades involved in apoptosis/survival, proliferation, stress responses, and cell trafficking [78,79]. However, there are no data on the role of bioactive lipids in the mobilization of BMSPCs in IHD. The data shown here for the first time support an important role of bioactive lipids in the mobilization of BMSPCs after MI. We noted an elevated level of S1P and C1P in the plasma of MI patients shortly after the onset of myocardial ischemia. These levels showed a temporal correlation with the increased numbers of circulating BMSPCs, suggesting a role of bioactive lipids in this mobilization (Figs. 1 and 3). Furthermore, plasma samples isolated from AMI patients at peak BMSPCs mobilization were capable of chemoattracting BMSPCs in migration assays, a phenomenon that was blocked by delipidation of the plasma and selective S1Pr1 antagonists (Fig. 5).

On the other hand, assessing the role of C1P in this phenomenon will be more challenging, as there are no known receptor knockout or blocking agents for C1P. However, our recent data from murine models demonstrate an increase in C1P level in the myocardium after hypoxic injury and chemotactic responsiveness of BM-derived EPCs, MSCs, and VSELs to C1P gradient. These data support an involvement of this bioactive lipid in regeneration of damaged tissues [48]. Thus, our findings extend the role of bioactive lipids in myocardial ischemia and mobilization of BMSPCs into PB. However, we are aware that more work is needed to demonstrate *in vivo* models that damaged myocardium may chemoattract circulating PB non-HSC in a bioactive lipid-

dependent manner. To address this question, our previous data as well as the literature demonstrate a reduction in S1P in the myocardium after AMI secondary to the up-regulation of S1P lyase (data not shown). On the other, since C1P is elevated in the myocardium after ischemia/reperfusion [48], this suggests its potential role in homing of circulating BMSPCs to the ischemic myocardium [26,80].

Studies mobilizing BM derived cells using granulocyte colony stimulating factor or transplanting BM-derived cells after ischemia-induced damage have faced limited engraftment and modest success [21,24,81–85]. Evidence from animal studies demonstrate that BM cells mobilized in the setting of AMI home to the myocardium but differentiate at very low rates to cardiomyocytes [86]. Further evidence suggests that paracrine factors released from BMSCs such as cKit+ cells recruit and stimulate resident cardiac stem cells to proliferate, differentiate, and repair the myocardium after ischemic injury [87]. Regardless of the mechanisms of benefit, better engraftment of the transplanted cells is needed. After myocardial infarction, there is an elevation in the MMPs at the site of infarction as early as few hours after the acute event [56]. Elevated MMPs have been shown to degrade traditional chemokines such as SDF-1 [35] and monocyte chemoattractant protein [36] among others, thus lowering their chemoattractant activity. Recent evidence suggests the role of cathelicidins in priming BM-derived HSCs migration to lower levels of SDF-1 and their contribution to HSCs homing to the BM after irradiation injury [41]. We demonstrate that CAMPs are overexpressed after myocardial ischemia in cardiac tissues as well as cardiac fibroblasts. On the same note, the human CAMP-LL37 primes mobilized PBSPCs isolated from patients following AMI to low, yet physiological, levels of SDF-1 (2 ng/mL) (Fig. 6). This is in agreement with other studies which showed that pre-incubating endothelial progenitor cells with LL37 enhanced their homing and recruitment to areas of hind limb ischemia and the process of neovascularization [88]. Taken together, these data support a potential novel role for CAMPs in the homing of BMSPCs to the ischemic myocardium. These findings may have important therapeutic implications in planning future BMSPCs-based myocardial regenerative studies. Since the members of the innate immune system have been successfully employed to enhance homing of HSCs into BM [37,89,90], we are currently examining similar pathways in enhancing the homing of transplanted BM-derived stem cells into the ischemic myocardium after AMI in animal models.

In conclusion, this study highlights the potential role of bioactive lipids and cathelicidin in the mobilization and homing of BM derived cells to the ischemic myocardium with their potential role in cardiomyocyte chimerism. Multiple new therapies that modulate the plasma levels of S1P or S1Pr expression are approved by the FDA and can be utilized in improving the mobilization of BM-derived stem cells in myocardial ischemia. Similarly, priming of BM-derived cells with LL37 or a product of the activated CC such as C3a can be used to improve their homing to the ischemic myocardium and, thus, overcome a major hurdle in stem cell regenerative myocardial therapies. We are currently examining both strategies in our laboratory to improve the mobilization and homing of BMSPCs to the ischemic myocardium.

## Acknowledgments

Funding Sources—Drs. Abdel-Latif, Karapetyan and Ziada and their work are supported in part by the National Center for Research Resources and the National Center for Advancing Translational Sciences, National Institutes of Health, through grant UL1TR000117. Dr. Smyth is supported by the NIH grant (UL1TR000117), the Heart Lung and Blood Institute (R01HL078663). This material is also based on work supported in part by resources at the Lexington VA Medical Center. Dr. Ratajczak is supported by NIH 2R01 DK074720, Maestro grant 2011/02/A/NZ4/00035 and Stella and Henry Hoenig Endowment. Dr. Morris is supported by NIH grants HL078663, GM050388, 1P20RR021954, and UL1RR033173.

## Author Disclosure Statement

No competing financial interests exist.

## References

- Roger VL, AS Go, DM Lloyd-Jones, RJ Adams, JD Berry, TM Brown, MR Carnethon, S Dai, G de Simone, et al. (2011). Heart disease and stroke statistics—2011 update: a report from the American Heart Association. *Circulation* 123:e18–e209.
- Braunwald E and M Bristow. (2000). Congestive heart failure: fifty years of progress. *Circulation* 102:IV14–IV23.
- McMurray J and M Pfeffer. (2005). Heart failure. *Lancet* 365:1877–1889.
- Levy D, S Kenchaiah, MG Larson, EJ Benjamin, MJ Kupka, KK Ho, JM Murabito and VS Ramachandran. (2002). Long-term trends in the incidence of and survival with heart failure. *N Engl J Med* 347:1442–1444.
- Roger VL, SA Weston, MM Redfield, JP Hellermann-Homan, J Killian, BP Yawn and SJ Jacobsen. (2004). Trends in heart failure incidence and survival in a community-based population. *JAMA* 292:344–350.
- Deb A, S Wang, KA Skelding, D Miller, D Simper and NM Caplice. (2003). Bone marrow-derived cardiomyocytes are present in adult human heart: a study of gender-mismatched bone marrow transplantation patients. *Circulation* 107:1247–1249.
- Quaini F, K Urbanek, AP Beltrami, N Finato, CA Beltrami, B Nadal-Ginard, J Kajstura, A Leri and P Anversa. (2002). Chimerism of the transplanted heart. *N Engl J Med* 346:5–15.
- Rupp S, M Koyanagi, M Iwasaki, J Bauer, S von Gerlach, D Schranz, AM Zeiher and S Dimmeler. (2008). Characterization of long-term endogenous cardiac repair in children after heart transplantation. *Eur Heart J* 29:1867–1872.
- Kucia M, M Halasa, M Wysoczynski, M Baskiewicz-Masiuk, S Moldenhawer, E Zuba-Surma, R Czajka, W Wojakowski, B Machalinski and M Ratajczak. (2007). Morphological and molecular characterization of novel population of CXCR4+ SSEA-4+ Oct-4+ very small embryonic-like cells purified from human cord blood: preliminary report. *Leukemia* 21:297–303.
- Kucia M, R Reza, FR Campbell, E Zuba-Surma, M Majka, J Ratajczak and MZ Ratajczak. (2006). A population of very small embryonic-like (VSEL) CXCR4(+)/SSEA-1(+)/Oct-4+ stem cells identified in adult bone marrow. *Leukemia* 20:857–869.
- Kucia M, M Wysoczynski, J Ratajczak and M Ratajczak. (2008). Identification of very small embryonic like (VSEL) stem cells in bone marrow. *Cell Tissue Res* 331:125–134.
- Bergmann O, RD Bhardwaj, S Bernard, S Zdunek, F Barnabe-Heider, S Walsh, J Zupicich, K Alkass, BA Buchholz, et al. (2009). Evidence for cardiomyocyte renewal in humans. *Science* 324:98–102.
- Hsieh PC, VF Segers, ME Davis, C MacGillivray, J Gannon, JD Molkenin, J Robbins and RT Lee. (2007). Evidence from a genetic fate-mapping study that stem cells refresh adult mammalian cardiomyocytes after injury. *Nat Med* 13:970–974.
- de Weger RA, I Verbrugge, AH Bruggink, MM van Oosterhout, Y de Souza, DF van Wichen, FH Gmelig-Meyling, N de Jonge and LF Verdonck. (2008). Stem cell-derived cardiomyocytes after bone marrow and heart transplantation. *Bone Marrow Transplant* 41:563–569.
- Abdel-Latif A, EK Zuba-Surma, KM Ziada, M Kucia, DA Cohen, AM Kaplan, G Van Zant, S Selim, SS Smyth and MZ Ratajczak. (2010). Evidence of mobilization of pluripotent stem cells into peripheral blood of patients with myocardial ischemia. *Exp Hematol* 38:1131–1142.
- Lev E, N Kleiman, Y Birnbaum, D Harris, M Korbling and Z Estrov. (2005). Circulating endothelial progenitor cells and coronary collaterals in patients with non-ST segment elevation myocardial infarction. *J Vasc Res* 42:408–414.
- Massa M, V Rosti, M Ferrario, R Campanelli, I Ramajoli, R Rosso, G De Ferrari, M Ferlini, L Goffredo, A et al. (2005). Increased circulating hematopoietic and endothelial progenitor cells in the early phase of acute myocardial infarction. *Blood* 105:199–206.
- Shintani S, T Murohara, H Ikeda, T Ueno, T Honma, A Katoh, K Sasaki, T Shimada, Y Oike and T Imaizumi. (2001). Mobilization of endothelial progenitor cells in patients with acute myocardial infarction. *Circulation* 103:2776–2779.
- Wojakowski W, M Tendera, M Kucia, E Zuba-Surma, E Paczkowska, J Ciosek, M Halasa, M Krol, M Kazmierski, et al. (2009). Mobilization of bone marrow-derived Oct-4+ SSEA-4+ very small embryonic-like stem cells in patients with acute myocardial infarction. *J Am Coll Cardiol* 53:1–9.
- Wojakowski W, M Tendera, A Zebzda, A Michalowska, M Majka, M Kucia, K Maslankiewicz, R Wyderka, M Król, et al. (2006). Mobilization of CD34(+), CD117(+), CXCR4(+), c-met(+) stem cells is correlated with left ventricular ejection fraction and plasma NT-proBNP levels in patients with acute myocardial infarction. *Eur Heart J* 27:283–289.
- Abdel-Latif A, R Bolli, EK Zuba-Surma, IM Tleyjeh, CA Hornung and B Dawn. (2008). Granulocyte colony-stimulating factor therapy for cardiac repair after acute myocardial infarction: a systematic review and meta-analysis of randomized controlled trials. *Am Heart J* 156:216–226.
- Valgimigli M, G Rigolin, C Cittanti, P Malagutti, S Curello, G Percoco, A Bugli, P Della, L Bragotti, et al. (2005). Use of granulocyte-colony stimulating factor during acute myocardial infarction to enhance bone marrow stem cell mobilization in humans: clinical and angiographic safety profile. *Eur Heart J* 26:1838–1845.
- Zohnhofer D, A Dibra, T Koppa, A de Waha, RS Ripa, J Kastrup, M Valgimigli, A Schomig and A Kastrati. (2008). Stem cell mobilization by granulocyte colony-stimulating factor for myocardial recovery after acute myocardial infarction: a meta-analysis. *J Am Coll Cardiol* 51:1429–1437.
- Zohnhofer D, I Ott, J Mehilli, K Schömig, F Michalk, T Ibrahim, G Meisetschläger, J von Wedel, H Bollwein, et al. (2006). Stem cell mobilization by granulocyte colony-stimulating factor in patients with acute myocardial infarction: a randomized controlled trial. *JAMA* 295:1003–1010.

25. Kucia M, K Jankowski, R Reza, M Wysoczynski, L Bandura, DJ Allendorf, J Zhang, J Ratajczak and MZ Ratajczak. (2004). CXCR4-SDF-1 signalling, locomotion, chemotaxis and adhesion. *J Mol Histol* 35:233–245.
26. Kim C, G Schneider, A Abdel-Latif, K Mierzejewska, M Sunkara, S Borkowska, J Ratajczak, AJ Morris, M Kucia and MZ Ratajczak. (2012). Ceramide-1-phosphate regulates migration of multipotent stromal cells (MSCs) and endothelial progenitor cells (EPCs) - implications for tissue regeneration. *Stem Cells* [Epub ahead of print]; DOI: doi: 10.1002/stem.1291.
27. Ratajczak MZ, CH Kim, A Abdel-Latif, G Schneider, M Kucia, AJ Morris, MJ Laughlin and J Ratajczak. (2012). A novel perspective on stem cell homing and mobilization: review on bioactive lipids as potent chemoattractants and cationic peptides as underappreciated modulators of responsiveness to SDF-1 gradients. *Leukemia* 26:63–72.
28. Ratajczak MZ, H Lee, M Wysoczynski, W Wan, W Marlicz, MJ Laughlin, M Kucia, A Janowska-Wieczorek and J Ratajczak. (2010). Novel insight into stem cell mobilization-plasma sphingosine-1-phosphate is a major chemoattractant that directs the egress of hematopoietic stem progenitor cells from the bone marrow and its level in peripheral blood increases during mobilization due to activation of complement cascade/membrane attack complex. *Leukemia* 24:976–985.
29. Juarez JG, N Harun, M Thien, R Welschinger, R Baraz, A Dela Pena, SM Pitson, M Rettig, JF Dipersio, KF Bradstock and LJ Bendall. (2011). Sphingosine-1-phosphate facilitates trafficking of hematopoietic stem cells and their mobilization by CXCR4 antagonists in mice. *Blood* 119:707–716.
30. Ceradini DJ, AR Kulkarni, MJ Callaghan, OM Tepper, N Bastidas, ME Kleinman, JM Capla, RD Galiano, JP Levine and GC Gurtner. (2004). Progenitor cell trafficking is regulated by hypoxic gradients through HIF-1 induction of SDF-1. *Nat Med* 10:858–864.
31. Lakkisto P, V Kyto, H Forsten, JM Siren, H Segersvard, LM Voipio-Pulkki, M Laine, K Pulkki and I Tikkanen. (2010). Heme oxygenase-1 and carbon monoxide promote neo-vascularization after myocardial infarction by modulating the expression of HIF-1 $\alpha$ , SDF-1 $\alpha$  and VEGF-B. *Eur J Pharmacol* 635:156–164.
32. Youn SW, SW Lee, J Lee, HK Jeong, JW Suh, CH Yoon, HJ Kang, HZ Kim, GY Koh, et al. (2011). COMP-Ang1 stimulates HIF-1 $\alpha$ -mediated SDF-1 overexpression and recovers ischemic injury through BM-derived progenitor cell recruitment. *Blood* 117:4376–4386.
33. Agarwal U, W Ghalayini, F Dong, K Weber, YR Zou, SY Rabbany, S Rafii and MS Penn. (2010). Role of cardiac myocyte CXCR4 expression in development and left ventricular remodeling after acute myocardial infarction. *Circ Res* 107:667–676.
34. Kim CH, W Wu, M Wysoczynski, A Abdel-Latif, M Sunkara, A Morris, M Kucia, J Ratajczak and MZ Ratajczak. (2012). Conditioning for hematopoietic transplantation activates the complement cascade and induces a proteolytic environment in bone marrow: a novel role for bioactive lipids and soluble C5b-C9 as homing factors. *Leukemia* 26:106–116.
35. McQuibban GA, GS Butler, JH Gong, L Bendall, C Power, I Clark-Lewis and CM Overall. (2001). Matrix metalloproteinase activity inactivates the CXC chemokine stromal cell-derived factor-1. *J Biol Chem* 276:43503–43508.
36. McQuibban GA, JH Gong, JP Wong, JL Wallace, I Clark-Lewis and CM Overall. (2002). Matrix metalloproteinase processing of monocyte chemoattractant proteins generates CC chemokine receptor antagonists with anti-inflammatory properties *in vivo*. *Blood* 100:1160–1167.
37. Lee HM, M Wysoczynski, R Liu, DM Shin, M Kucia, M Botto, J Ratajczak and MZ Ratajczak. (2010). Mobilization studies in complement-deficient mice reveal that optimal AMD3100 mobilization of hematopoietic stem cells depends on complement cascade activation by AMD3100-stimulated granulocytes. *Leukemia* 24:573–582.
38. Jalili A, L Marquez-Curtis, N Shirvaikar, M Wysoczynski, M Ratajczak and A Janowska-Wieczorek. (2010). Complement C1q enhances homing-related responses of hematopoietic stem/progenitor cells. *Transfusion* 50:2002–2010.
39. Jalili A, N Shirvaikar, L Marquez-Curtis, Y Qiu, C Korol, H Lee, AR Turner, MZ Ratajczak and A Janowska-Wieczorek. (2010). Fifth complement cascade protein (C5) cleavage fragments disrupt the SDF-1/CXCR4 axis: further evidence that innate immunity orchestrates the mobilization of hematopoietic stem/progenitor cells. *Exp Hematol* 38:321–332.
40. Ratajczak MZ, R Reza, M Wysoczynski, M Kucia, JT Baran, DJ Allendorf, J Ratajczak and GD Ross. (2004). Transplantation studies in C3-deficient animals reveal a novel role of the third complement component (C3) in engraftment of bone marrow cells. *Leukemia* 18:1482–1490.
41. Wu W, CH Kim, R Liu, M Kucia, W Marlicz, N Greco, J Ratajczak, MJ Laughlin and MZ Ratajczak. (2012). The bone marrow-expressed antimicrobial cationic peptide LL-37 enhances the responsiveness of hematopoietic stem progenitor cells to an SDF-1 gradient and accelerates their engraftment after transplantation. *Leukemia* 26:736–745.
42. Mathews TP, AJ Kennedy, Y Kharel, PC Kennedy, O Nicoara, M Sunkara, AJ Morris, BR Wamhoff, KR Lynch and TL Macdonald. (2010). Discovery, biological evaluation, and structure-activity relationship of amidine based sphingosine kinase inhibitors. *J Med Chem* 53:2766–2778.
43. Selim S, M Sunkara, AK Salous, SW Leung, EV Berdyshev, A Bailey, CL Campbell, R Charnigo, AJ Morris and SS Smyth. (2011). Plasma levels of sphingosine 1-phosphate are strongly correlated with haematocrit, but variably restored by red blood cell transfusions. *Clin Sci (London)* 121:565–572.
44. Arumugam TV, IA Shiels, TM Woodruff, DN Granger and SM Taylor. (2004). The role of the complement system in ischemia-reperfusion injury. *Shock* 21:401–409.
45. Bjerre M, TK Hansen and A Flyvbjerg. (2008). Complement activation and cardiovascular disease. *Horm Metab Res* 40:626–634.
46. Ren G, O Dewald and NG Frangogiannis. (2003). Inflammatory mechanisms in myocardial infarction. *Curr Drug Targets Inflamm Allergy* 2:242–256.
47. Riedemann NC and PA Ward. (2003). Complement in ischemia reperfusion injury. *Am J Pathol* 162:363–367.
48. Sumitra M, P Manikandan, M Nayeem, BM Manohar, B Lokanadam, S Vairamuthu, S Subramaniam and R Puvanakrishnan. (2005). Time course studies on the initiation of complement activation in acute myocardial infarction induced by coronary artery ligation in rats. *Mol Cell Biochem* 268:149–158.
49. Mandala S, R Hajdu, J Bergstrom, E Quackenbush, J Xie, J Milligan, R Thornton, GJ Shei, D Card, C Keohane, M Rosenbach, J Hale, CL Lynch, K Rupperecht, W Parsons and H Rosen. (2002). Alteration of lymphocyte trafficking by sphingosine-1-phosphate receptor agonists. *Science* 296:346–349.
50. Sanna MG, J Liao, E Jo, C Alfonso, MY Ahn, MS Peterson, B Webb, S Lefebvre, J Chun, N Gray and H Rosen. (2004).

- Sphingosine 1-phosphate (S1P) receptor subtypes S1P1 and S1P3, respectively, regulate lymphocyte recirculation and heart rate. *J Biol Chem* 279:13839–13848.
51. Sensken SC and MH Graler. (2010). Down-regulation of S1P1 receptor surface expression by protein kinase C inhibition. *J Biol Chem* 285:6298–6307.
52. Thangada S, KM Khanna, VA Blaho, ML Oo, DS Im, C Guo, L Lefrancois and T Hla. (2010). Cell-surface residence of sphingosine 1-phosphate receptor 1 on lymphocytes determines lymphocyte egress kinetics. *J Exp Med* 207: 1475–1483.
53. Golan K, Y Vagima, A Ludin, T Itkin, S Cohen-Gur, A Kalinkovich, O Kollet, C Kim, A Schajnovitz, et al. (2012). S1P promotes murine progenitor cell egress and mobilization via S1P1-mediated ROS signaling and SDF-1 release. *Blood* 119:2478–2488.
54. Bandhuvula P, N Honbo, GY Wang, ZQ Jin, H Fyrst, M Zhang, AD Borowsky, L Dillard, JS Karliner and JD Saba. (2011). S1P lyase: a novel therapeutic target for ischemia-reperfusion injury of the heart. *Am J Physiol Heart Circ Physiol* 300:H1753–H1761.
55. Karshovska E, A Zerneck, G Sevilimis, A Millet, M Hristov, CD Cohen, H Schmid, F Krotz, HY Sohn, et al. (2007). Expression of HIF-1 $\alpha$  in injured arteries controls SDF-1 $\alpha$  mediated neointima formation in apolipoprotein E deficient mice. *Arterioscler Thromb Vasc Biol* 27:2540–2547.
56. Peterson JT, H Li, L Dillon and JW Bryant. (2000). Evolution of matrix metalloprotease and tissue inhibitor expression during heart failure progression in the infarcted rat. *Cardiovasc Res* 46:307–315.
57. Ratajczak J, R Reca, M Kucia, M Majka, DJ Allendorf, JT Baran, A Janowska-Wieczorek, RA Wetsel, GD Ross and MZ Ratajczak. (2004). Mobilization studies in mice deficient in either C3 or C3a receptor (C3aR) reveal a novel role for complement in retention of hematopoietic stem/progenitor cells in bone marrow. *Blood* 103:2071–2078.
58. Hanel P, P Andreani and MH Graler. (2007). Erythrocytes store and release sphingosine 1-phosphate in blood. *FASEB J* 21:1202–1209.
59. Okajima F. (2002). Plasma lipoproteins behave as carriers of extracellular sphingosine 1-phosphate: is this an atherogenic mediator or an anti-atherogenic mediator? *Biochim Biophys Acta* 1582:132–137.
60. Schaphorst KL, E Chiang, KN Jacobs, A Zaiman, V Natarajan, F Wigley and JG Garcia. (2003). Role of sphingosine-1 phosphate in the enhancement of endothelial barrier integrity by platelet-released products. *Am J Physiol Lung Cell Mol Physiol* 285:L258–L267.
61. Yatomi Y, T Ohmori, G Rile, F Kazama, H Okamoto, T Sano, K Satoh, S Kume, G Tigyi, Y Igarashi and Y Ozaki. (2000). Sphingosine 1-phosphate as a major bioactive lysosphospholipid that is released from platelets and interacts with endothelial cells. *Blood* 96:3431–3438.
62. Yatomi Y, F Ruan, S Hakomori and Y Igarashi. (1995). Sphingosine-1-phosphate: a platelet-activating sphingolipid released from agonist-stimulated human platelets. *Blood* 86:193–202.
63. Pappu R, SR Schwab, I Cornelissen, JP Pereira, JB Regard, Y Xu, E Camerer, YW Zheng, Y Huang, JG Cyster and SR Coughlin. (2007). Promotion of lymphocyte egress into blood and lymph by distinct sources of sphingosine-1-phosphate. *Science* 316:295–298.
64. Venkataraman K, YM Lee, J Michaud, S Thangada, Y Ai, HL Bonkovsky, NS Parikh, C Habrukowich and T Hla. (2008). Vascular endothelium as a contributor of plasma sphingosine 1-phosphate. *Circ Res* 102:669–676.
65. Grundmann F, C Scheid, D Braun, C Zobel, H Reuter, R Schwinger and J Müller-Ehmsen. (2007). Differential increase of CD34, KDR/CD34, CD133/CD34 and CD117/CD34 positive cells in peripheral blood of patients with acute myocardial infarction. *Clin Res Cardiol* 96:621–627.
66. Kucia M, B Dawn, G Hunt, Y Guo, M Wysoczynski, M Majka, J Ratajczak, F Rezzoug, ST Ildstad, R Bolli and MZ Ratajczak. (2004). Cells expressing early cardiac markers reside in the bone marrow and are mobilized into the peripheral blood following myocardial infarction. *Circ Res* 95:1191–1199.
67. Leone A, S Rutella, G Bonanno, A Abbate, A Rebutzi, S Giovannini, M Lombardi, L Galiuto, G Liuzzo, et al. (2005). Mobilization of bone marrow-derived stem cells after myocardial infarction and left ventricular function. *Eur Heart J* 26:1196–1204.
68. Dawn B, S Tiwari, MJ Kucia, EK Zuba-Surma, Y Guo, SK Sanganalath, A Abdel-Latif, G Hunt, RJ Vincent, et al. (2008). Transplantation of bone marrow-derived very small embryonic-like stem cells attenuates left ventricular dysfunction and remodeling after myocardial infarction. *Stem Cells* 26:1646–1655.
69. Tendera M, W Wojakowski, W Ruzyllo, L Chojnowska, C Kepka, W Tracz, P Musialek, W Piwowarska, J Nessler, et al. (2009). Intracoronary infusion of bone marrow-derived selected CD34+ CXCR4+ cells and non-selected mononuclear cells in patients with acute STEMI and reduced left ventricular ejection fraction: results of randomized, multicentre Myocardial Regeneration by Intracoronary Infusion of Selected Population of Stem Cells in Acute Myocardial Infarction (REGENT) Trial. *Eur Heart J* 30:1313–1321.
70. Zuba-Surma EK, Y Guo, H Taher, SK Sanganalath, G Hunt, RJ Vincent, M Kucia, A Abdel-Latif, XL Tang, et al. (2011). Transplantation of expanded bone marrow-derived very small embryonic-like stem cells (VSEL-SCs) improves left ventricular function and remodelling after myocardial infarction. *J Cell Mol Med* 15:1319–1328.
71. Wojakowski W, M Tendera, M Kucia, E Zuba-Surma, K Milewski, D Wallace-Bradley, M Kazmierski, P Buszman, E Hrycek, et al. (2010). Cardiomyocyte differentiation of bone marrow-derived Oct-4+CXCR4+SSEA-1+ very small embryonic-like stem cells. *Int J Oncol* 37:237–247.
72. Asahara T and A Kawamoto. (2004). Endothelial progenitor cells for postnatal vasculogenesis. *Am J Physiol Cell Physiol* 287:C572–C579.
73. Asahara T, T Murohara, A Sullivan, M Silver, R van der Zee, T Li, B Witzenbichler, G Schatteman and JM Isner. (1997). Isolation of putative progenitor endothelial cells for angiogenesis. *Science* 275:964–967.
74. Peichev M, AJ Naiyer, D Pereira, Z Zhu, WJ Lane, M Williams, MC Oz, DJ Hicklin, L Witte, MA Moore and S Rafii. (2000). Expression of VEGFR-2 and AC133 by circulating human CD34(+) cells identifies a population of functional endothelial precursors. *Blood* 95:952–958.
75. Brehm M, P Ebner, F Picard, R Urbien, G Turan and BE Strauer. (2009). Enhanced mobilization of CD34(+) progenitor cells expressing cell adhesion molecules in patients with STEMI. *Clin Res Cardiol* 98:477–486.
76. Ratajczak J, M Kucia, K Mierzejewska, W Marlicz, Z Pietrkowski, W Wojakowski, NJ Greco, M Tendera and MZ Ratajczak. (2013). Paracrine proangiopoietic effects of human umbilical cord blood-derived purified CD133(+)

- cells-implications for stem cell therapies in regenerative medicine. *Stem Cells Dev* 22(3):422–430.
77. Ratajczak MZ, M Kucia, T Jadczyk, NJ Greco, W Wojakowski, M Tendera and J Ratajczak. (2012). Pivotal role of paracrine effects in stem cell therapies in regenerative medicine: can we translate stem cell-secreted paracrine factors and microvesicles into better therapeutic strategies? *Leukemia* 26:1166–1173.
  78. Arana L, P Gangoiti, A Ouro, M Trueba and A Gomez-Munoz. (2010). Ceramide and ceramide 1-phosphate in health and disease. *Lipids Health Dis* 9:15.
  79. Chalfant CE and S Spiegel. (2005). Sphingosine 1-phosphate and ceramide 1-phosphate: expanding roles in cell signaling. *J Cell Sci* 118:4605–4612.
  80. Cui J, RM Engelman, N Maulik and DK Das. (2004). Role of ceramide in ischemic preconditioning. *J Am Coll Surg* 198:770–777.
  81. Abdel-Latif A, R Bolli, I Tleyjeh, V Montori, E Perin, C Horning, E Zuba-Surma, M Al-Mallah and B Dawn. (2007). Adult bone marrow-derived cells for cardiac repair: a systematic review and meta-analysis. *Arch Intern Med* 167 989–997.
  82. Assmus B, J Honold, V Schachinger, M Britten, U Fischer-Rasokat, R Lehmann, C Teupe, K Pistorius, et al. (2006). Transcoronary transplantation of progenitor cells after myocardial infarction. *N Engl J Med* 355:1222–1232.
  83. Engelmann M, H Theiss, C Hennig-Theiss, A Huber, B Wintersperger, A Werle-Ruedinger, S Schoenberg, G Steinbeck and W Franz. (2006). Autologous bone marrow stem cell mobilization induced by granulocyte colony-stimulating factor after subacute ST-segment elevation myocardial infarction undergoing late revascularization: final results from the G-CSF-STEMI (granulocyte colony-stimulating factor st-segment elevation myocardial infarction) trial. *J Am Coll Cardiol* 48:1712–1721.
  84. Fan L, L Chen, X Chen and F Fu. (2007). A meta-analysis of stem cell mobilization by granulocyte colony-stimulating factor in the treatment of acute myocardial infarction. *Cardiovasc Drugs Ther* 22:45–54.
  85. Perin EC, GV Silva, Y Zheng, A Gahremanpour, J Canales, D Patel, MR Fernandes, LH Keller, X Quan, et al. (2012). Randomized, double-blind pilot study of transendocardial injection of autologous aldehyde dehydrogenase-bright stem cells in patients with ischemic heart failure. *Am Heart J* 163:415–421e1.
  86. Fukuhara S, S Tomita, T Nakatani, C Yutani and S Kitamura. (2005). Endogenous bone-marrow-derived stem cells contribute only a small proportion of regenerated myocardium in the acute infarction model. *J Heart Lung Transplant* 24:67–72.
  87. Loffredo FS, ML Steinhauser, J Gannon and RT Lee. (2011). Bone marrow-derived cell therapy stimulates endogenous cardiomyocyte progenitors and promotes cardiac repair. *Cell Stem Cell* 8:389–398.
  88. Pfosser A, C El-Aouni, I Pfisterer, M Dietz, F Globisch, G Stachel, T Trenkwalder, O Pinkenburg, J Horstkotte, et al. (2010). NF kappaB activation in embryonic endothelial progenitor cells enhances neovascularization via PSGL-1 mediated recruitment: novel role for LL37. *Stem Cells* 28:376–385.
  89. Lee HM, W Wu, M Wysoczynski, R Liu, EK Zuba-Surma, M Kucia, J Ratajczak and MZ Ratajczak. (2009). Impaired mobilization of hematopoietic stem/progenitor cells in C5-deficient mice supports the pivotal involvement of innate immunity in this process and reveals novel promobilization effects of granulocytes. *Leukemia* 23:2052–2062.
  90. Wysoczynski M, R Reca, H Lee, W Wu, J Ratajczak and MZ Ratajczak. (2009). Defective engraftment of C3aR<sup>-/-</sup> hematopoietic stem progenitor cells shows a novel role of the C3a-C3aR axis in bone marrow homing. *Leukemia* 23:1455–1461.

Address correspondence to:

*Dr. Ahmed Abdel-Latif*  
*Gill Heart Institute and Division of Cardiovascular Medicine*  
*University of Kentucky*  
*740 South Limestone Street*  
*BBSRB Building, Room 253*  
*Lexington, KY 40536-0200*

*E-mail: abdel-latif@uky.edu*

Received for publication September 16, 2012

Accepted after revision January 2, 2013

Prepublished on Liebert Instant Online January 2, 2013

**This article has been cited by:**

1. Mariusz Z Ratajczak, Malwina Suszynska, Sylwia Borkowska, Janina Ratajczak, Gabriela Schneider. 2014. The role of sphingosine-1 phosphate and ceramide-1 phosphate in trafficking of normal stem cells and cancer cells. *Expert Opinion on Therapeutic Targets* **18**:1, 95-107. [[CrossRef](#)]
2. Witold N Nowak, Sebastian Borys, Katarzyna Kusińska, Karolina Bukowska-Strakova, Przemysław Witek, Teresa Koblik, Alicja Józkowicz, Maciej Tadeusz Małecki, Józef Dulak. 2014. Number of circulating pro-angiogenic cells, growth factor and anti-oxidative gene profiles might be altered in type 2 diabetes with and without diabetic foot syndrome. *Journal of Diabetes Investigation* **5**:1, 99-107. [[CrossRef](#)]
3. Christian Waeber, Thomas Walther. 2014. Sphingosine-1-Phosphate as a Potential Target for the Treatment of Myocardial Infarction. *Circulation Journal* **78**:4, 795-802. [[CrossRef](#)]
4. Prabhakara R. Nagareddy, Ahmed Asfour, Yuri M. Klyachkin, Ahmed Abdel-Latif. 2013. A novel role for bioactive lipids in stem cell mobilization during cardiac ischemia. *Journal of Thrombosis and Thrombolysis* . [[CrossRef](#)]
5. Antonio Gomez-Muñoz, Patricia Gangoiti, Lide Arana, Alberto Ouro, Io-Guané Rivera, Marta Ordoñez, Miguel Trueba. 2013. New insights on the role of ceramide 1-phosphate in inflammation. *Biochimica et Biophysica Acta (BBA) - Molecular and Cell Biology of Lipids* **1831**:6, 1060-1066. [[CrossRef](#)]
6. P. Alvarez, E. Carrillo, C. Vélez, F. Hita-Contreras, A. Martínez-Amat, F. Rodríguez-Serrano, H. Boulaiz, R. Ortiz, C. Melguizo, J. Prados, A. Aránega. 2013. Regulatory Systems in Bone Marrow for Hematopoietic Stem/Progenitor Cells Mobilization and Homing. *BioMed Research International* **2013**, 1-12. [[CrossRef](#)]