

University of Kentucky

UKnowledge

Oswald Research and Creativity Competition

Office of Undergraduate Research

2020

The Pinnacle

Allyson McNulty
University of Kentucky

Notes:

Allyson McNulty won the first place in the Design category.

Dr. Lindsey Fay was the faculty mentor.

[Right click to open a feedback form in a new tab to let us know how this document benefits you.](#)

Follow this and additional works at: <https://uknowledge.uky.edu/oswald>



Part of the [Art and Design Commons](#)

[Right click to open a feedback form in a new tab to let us know how this document benefits you.](#)

Recommended Citation

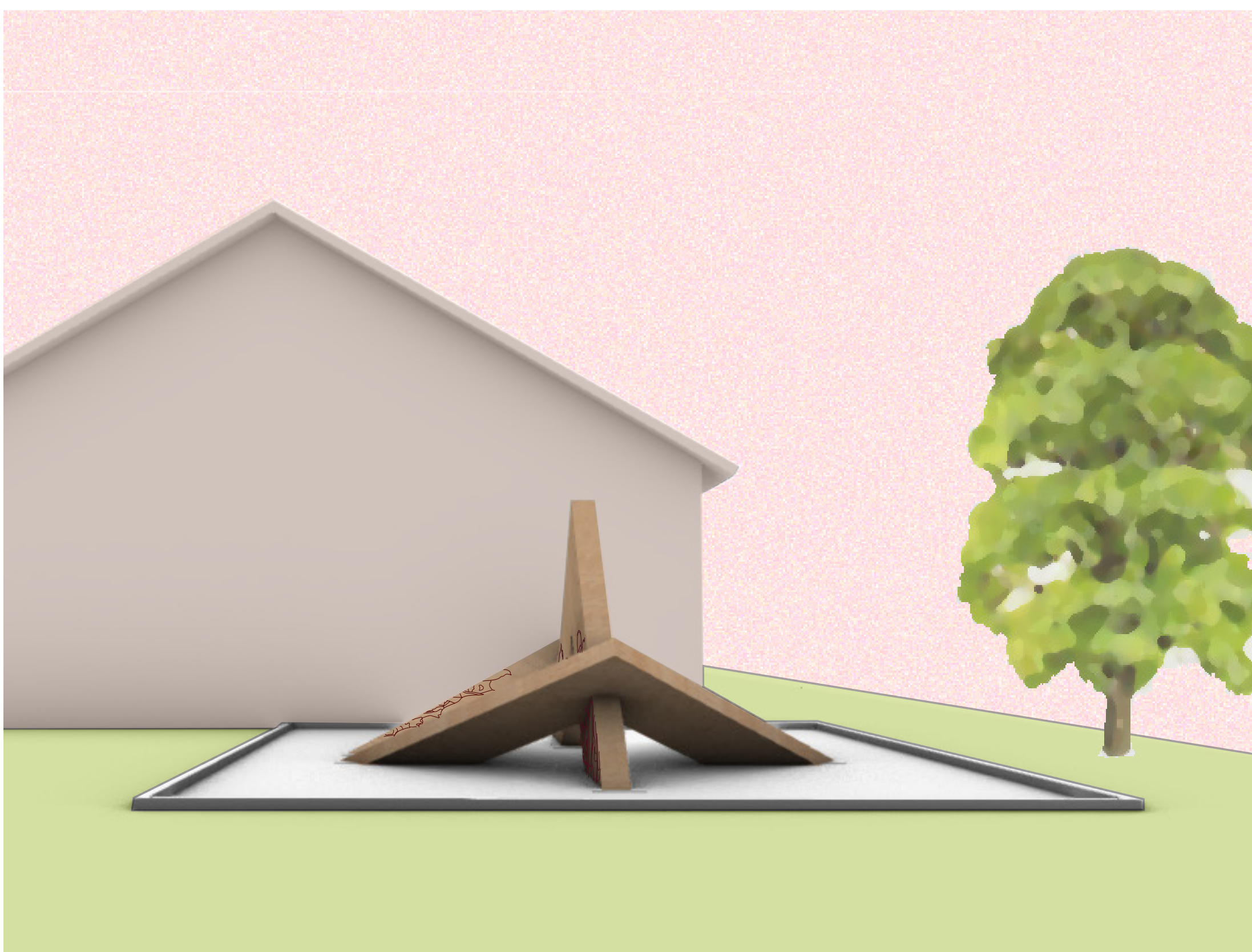
McNulty, Allyson, "The Pinnacle" (2020). *Oswald Research and Creativity Competition*. 29.
<https://uknowledge.uky.edu/oswald/29>

This Article is brought to you for free and open access by the Office of Undergraduate Research at UKnowledge. It has been accepted for inclusion in Oswald Research and Creativity Competition by an authorized administrator of UKnowledge. For more information, please contact UKnowledge@lsv.uky.edu.

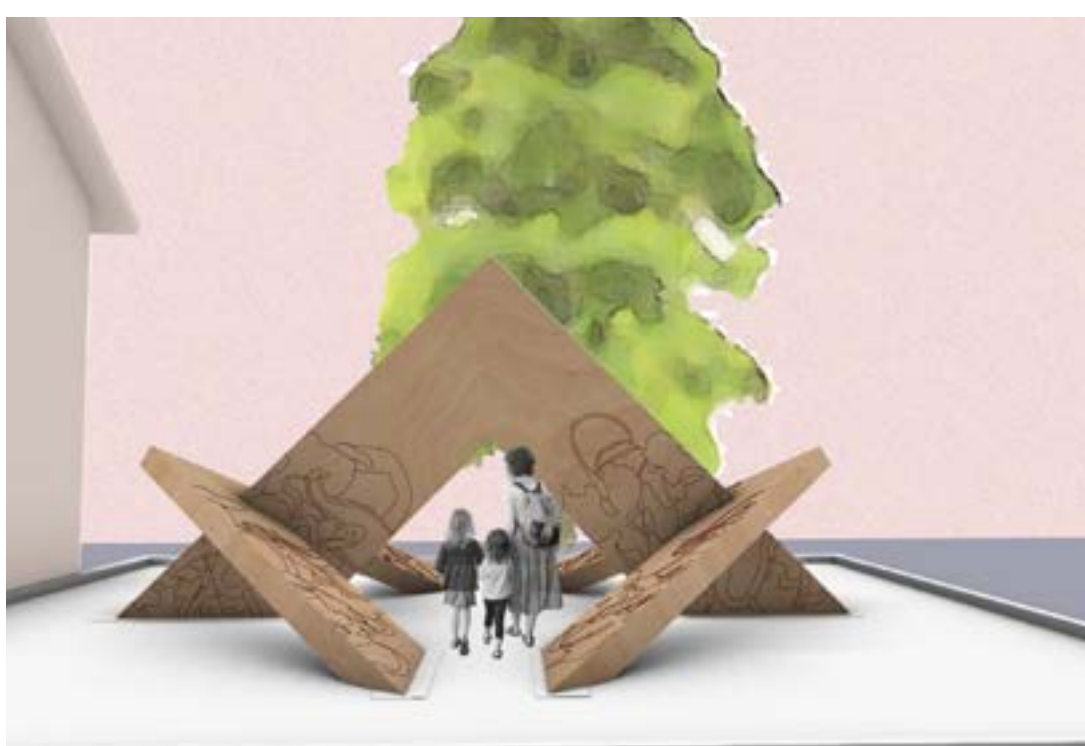


The Pinnacle

Family is more than a wife, a husband, and their children. Family is support and reliance, it is unconditional love. It's a concept many of us understand and feel a deep connection. This contemplative playscape is dedicated to Sarah West and her family, a former faculty member of the College of Design. This design is unified from three individual components, representative of each family member. The center piece acts as Sarah and her memory as a mother, wife, and artist. Alone, this piece could not stand. Two additional pieces brace and interlock into this center form, allowing the design to stand on its own. Together, these three members create an experience that is unique to both children and adults. It becomes a place for reflection and gathering, a place for resting and hiding, a place to jump, to run, to climb. It allows children's imagination to run wild, while still being a place to remember Sarah and her impact.



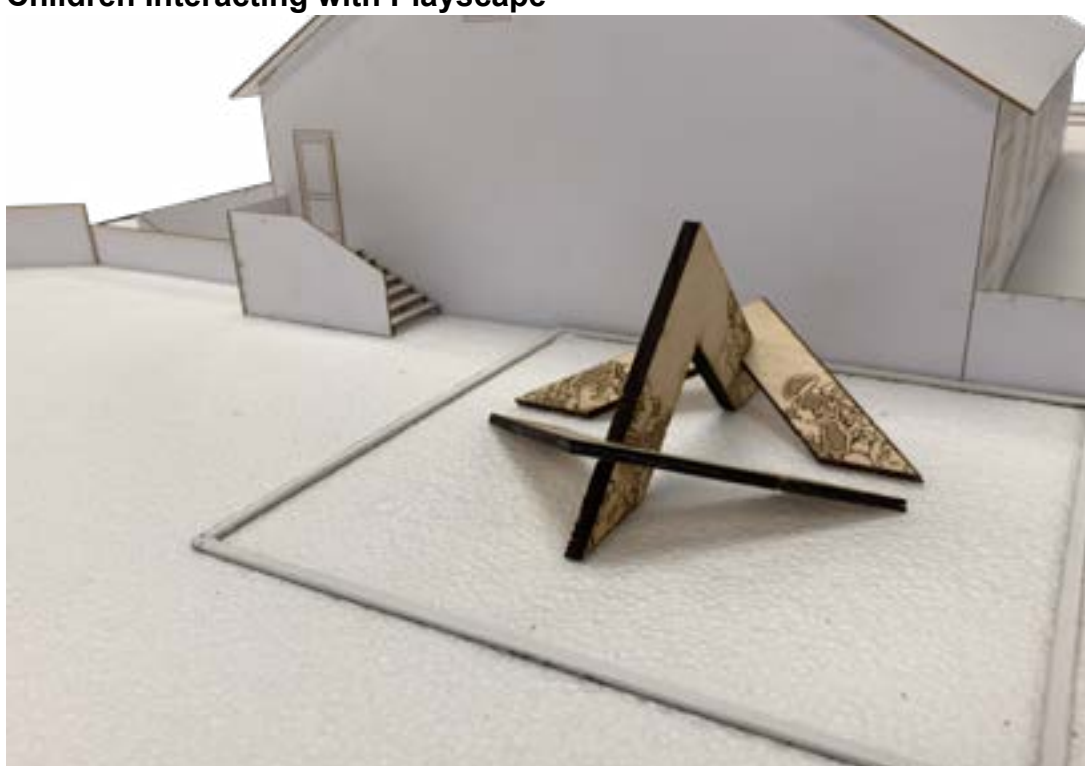
Perspective Location Description (i.e. View from Mound Looking Towards Meeting House)



Children Interacting with Playscape



Children Interacting with Playscape



Site Model



Site Model



Color Option 1



Color option 2



Color option 3