

University of Kentucky

UKnowledge

Molecular Modeling and Biopharmaceutical
Center Faculty Publications

Molecular Modeling and Biopharmaceutical

2-11-2021

Clinical Data Mining Reveals Analgesic Effects of Lapatinib in Cancer Patients

Shuo Zhou
University of Kentucky

Fang Zheng
University of Kentucky, fzhen2@uky.edu

Chang-Guo Zhan
University of Kentucky, chang-guo.zhan@uky.edu

Follow this and additional works at: https://uknowledge.uky.edu/mmhc_facpub

 Part of the [Pharmacy and Pharmaceutical Sciences Commons](#)

[Right click to open a feedback form in a new tab to let us know how this document benefits you.](#)

Repository Citation

Zhou, Shuo; Zheng, Fang; and Zhan, Chang-Guo, "Clinical Data Mining Reveals Analgesic Effects of Lapatinib in Cancer Patients" (2021). *Molecular Modeling and Biopharmaceutical Center Faculty Publications*. 21.

https://uknowledge.uky.edu/mmhc_facpub/21

This Article is brought to you for free and open access by the Molecular Modeling and Biopharmaceutical at UKnowledge. It has been accepted for inclusion in Molecular Modeling and Biopharmaceutical Center Faculty Publications by an authorized administrator of UKnowledge. For more information, please contact UKnowledge@lsv.uky.edu.

Clinical Data Mining Reveals Analgesic Effects of Lapatinib in Cancer Patients

Digital Object Identifier (DOI)

<https://doi.org/10.1038/s41598-021-82318-w>

Notes/Citation Information

Published in *Scientific Reports*, v. 11, issue 1, article no. 3528.

© The Author(s) 2021

This article is licensed under a Creative Commons Attribution 4.0 International License, which permits use, sharing, adaptation, distribution and reproduction in any medium or format, as long as you give appropriate credit to the original author(s) and the source, provide a link to the Creative Commons licence, and indicate if changes were made. The images or other third party material in this article are included in the article's Creative Commons licence, unless indicated otherwise in a credit line to the material. If material is not included in the article's Creative Commons licence and your intended use is not permitted by statutory regulation or exceeds the permitted use, you will need to obtain permission directly from the copyright holder. To view a copy of this licence, visit <https://creativecommons.org/licenses/by/4.0/>.



OPEN

Clinical data mining reveals analgesic effects of lapatinib in cancer patients

Shuo Zhou^{1,2}, Fang Zheng^{1,2}✉ & Chang-Guo Zhan^{1,2}✉

Microsomal prostaglandin E2 synthase 1 (mPGES-1) is recognized as a promising target for a next generation of anti-inflammatory drugs that are not expected to have the side effects of currently available anti-inflammatory drugs. Lapatinib, an FDA-approved drug for cancer treatment, has recently been identified as an mPGES-1 inhibitor. But the efficacy of lapatinib as an analgesic remains to be evaluated. In the present clinical data mining (CDM) study, we have collected and analyzed all lapatinib-related clinical data retrieved from clinicaltrials.gov. Our CDM utilized a meta-analysis protocol, but the clinical data analyzed were not limited to the primary and secondary outcomes of clinical trials, unlike conventional meta-analyses. All the pain-related data were used to determine the numbers and odd ratios (ORs) of various forms of pain in cancer patients with lapatinib treatment. The ORs, 95% confidence intervals, and *P* values for the differences in pain were calculated and the heterogeneous data across the trials were evaluated. For all forms of pain analyzed, the patients received lapatinib treatment have a reduced occurrence (OR 0.79; CI 0.70–0.89; *P* = 0.0002 for the overall effect). According to our CDM results, available clinical data for 12,765 patients enrolled in 20 randomized clinical trials indicate that lapatinib therapy is associated with a significant reduction in various forms of pain, including musculoskeletal pain, bone pain, headache, arthralgia, and pain in extremity, in cancer patients. Our CDM results have demonstrated the significant analgesic effects of lapatinib, suggesting that lapatinib may be repurposed as a novel type of analgesic.

Currently used non-steroid anti-inflammatory drugs (NSAIDs) target cyclooxygenase (COX)-1 and/or COX-2 with the goal to decrease biosynthesis of pro-inflammatory prostaglandin E2 (PGE₂) for pain relief. This is because, in general, pain starts from tissue damage/injury and the corresponding inflammation response¹. So, excessive inflammation is the root etiology of pain. NSAIDs are still the most accessible analgesics in clinical market^{2,3}. However, all the COX-1/2 inhibitors have undesirable adverse effects, including significant cardiovascular, cerebrovascular, and cardiovascular risks^{4,5}, because the COX-1/2 inhibition also blocks normal production of other physiologically necessary prostaglandins. As an inducible enzyme, microsomal prostaglandin E2 synthase 1 (mPGES-1), which exists in the downstream of the COX enzymes⁶, is a more promising, ideal target for anti-inflammatory pain relief. This is because the mPGES-1 inhibition will directly and only block the inducible over-production of PGE₂ without blocking the normal production of other prostaglandins and basal level of PGE₂ for physiological homeostasis, as confirmed in extensive studies using mPGES-1 knockouts^{7–15}. Hence, a highly selective mPGES-1 inhibitor is expected to retain the anti-inflammatory and analgesic effects of COX-1/2 inhibitors, but without the COX-1/2 inhibition-caused side effects. To develop an improved anti-inflammatory drug, various mPGES-1 inhibitors have been reported in the literature^{16–37}. Unfortunately, few of the previously reported potent inhibitors of human mPGES-1 have been demonstrated to also be potent inhibitors of mouse or rat mPGES-1, preventing the use of well-established mouse/rat models of pain or other inflammation-related diseases for preclinical studies³⁸.

To develop a next generation of anti-inflammatory drug targeting mPGES-1 for pain relief, we recently modeled and validated human mPGES-1 structure in an open conformation showing a more conserved glutathione (GSH)-binding site³⁹. The open-conformation structure was then used to virtually screen FDA-approved drugs for their potential inhibitory activity against human mPGES-1⁴⁰. Following the virtual screening, *in vitro* activity assays revealed that lapatinib, approved by FDA to treat HER2-positive metastatic breast cancer in women who have already had chemotherapy and trastuzumab (Herceptin), can potentially inhibit human mPGES-1

¹Molecular Modeling and Biopharmaceutical Center, College of Pharmacy, University of Kentucky, 789 South Limestone Street, Lexington, KY 40536, USA. ²Department of Pharmaceutical Sciences, College of Pharmacy, University of Kentucky, 789 South Limestone Street, Lexington, KY 40536, USA. ✉email: fzheng2@uky.edu; zhan@uky.edu

($IC_{50} = 0.8 \mu\text{M}$) and less potently inhibit mouse mPGES-1 ($IC_{50} = 12 \mu\text{M}$)⁴⁰. Even if lapatinib has a 15-fold lower inhibitory activity against mouse mPGES-1 compared to human mPGES-1, oral administration (PO) of lapatinib significantly and dose-dependently decreased the air-pouch PGE_2 level in carrageenan-induced mouse model of inflammation, demonstrating the desirable anti-inflammatory effects⁴⁰. These data suggest that lapatinib should have even stronger anti-inflammatory effects in humans. Further analysis⁴⁰ of available clinical pharmacokinetic (PK) data revealed that the maximum drug concentration (C_{max}) values of lapatinib from five different clinical trials are much higher than the IC_{50} in humans (e.g. $C_{\text{max}} = 8.598 \mu\text{M}$ under the FDA-approved oral dose of 1500 mg once a day), suggesting that lapatinib might have significant anti-inflammatory and analgesic effects even with an oral dose a few times lower than 1500 mg.

Notably, there have been hundreds of lapatinib-involved clinical trials (including 327 trials registered in clinicaltrials.gov) so far. However, none of the trials has had pain relief listed as one of the primary or secondary outcomes. To the best of our knowledge, only one of the trials was designed to investigate the impact of lapatinib monotherapy on the quality of life (QoL) and pain symptoms in patients with HER2+ relapsed or refractory inflammatory breast cancer⁴¹. Specifically, a Phase II trial concluded that lapatinib monotherapy may “provide relief from symptoms, including pain, in the short term”⁴¹. However, their sample size was too small ($n = 17$ for the lapatinib group) to achieve the statistical significance in terms of the analgesic effects of lapatinib. There has been no report of any relevant meta-analysis concerning analgesic effects of lapatinib. This is because, in general, conventional methods of meta-analysis have been focused on analysis of available clinical data listed as the primary or secondary outcomes of clinical trials, and the required primary or secondary outcomes of clinical trials are not available for pain relief with lapatinib.

Nevertheless, as well known, many cancer patients suffer from pain. For this reason, we may reasonably assume that the pain information for the cancer patients could have been buried in other sections (e.g. adverse events) other than the primary and secondary outcomes in the released clinical trial records. So, in order to examine the possible analgesic effects of lapatinib, we decided to conduct a more detailed clinical data mining (CDM) study beyond the conventional meta-analysis. Specifically, we first collected all available lapatinib-related clinical data about pain beyond the primary and secondary outcomes of clinical trials, and then analyzed the collected clinical data by using a meta-analysis protocol. In other words, our meta-analysis was not limited to the primary and secondary outcomes of clinical trials such that more clinical data were available for our CDM or non-conventional meta-analysis. According to our CDM results, lapatinib therapy is associated with a significant reduction in various forms of pain, including musculoskeletal pain, bone pain, headache, arthralgia, and pain in extremity, in cancer patients. Our CDM data have clearly demonstrated the favorable analgesic effects of lapatinib.

Results

Search results and study quality. As described in the “Methods” section, all lapatinib-related clinical trial data about pain were retrieved from the MEDLINE database through clinicaltrials.gov, and the clinical data collected for analysis were not limited to the primary or secondary outcomes of the clinical trials. Within the clinical trials involving lapatinib, only randomized studies with a proper control group were selected for analysis. As a result, 20 randomized, controlled trials were identified based on the criteria mentioned in the Methods section, including a total of 12,765 cancer patients (see Table 1 and Supporting Information Tables S1 to 4 for the clinical data). In all these selected trials, four were quadruple-blind^{42–45}, one was triple-blind⁴⁶, five were double-blind^{47–51}, one was single-blind⁵², and the other trials were not masked^{53–61}. 14 trials recruited breast cancer patients^{43–46,48,50,51,55–61}, three trials recruited head and neck cancer patients^{47,49,52}, two trials recruited gastric cancer patients^{42,53}, and one trial recruited cervical cancer patients⁵⁴. Three studies were purely placebo-controlled^{44,46,52}, three studies had a paclitaxel component^{50,51,53}, five studies had a trastuzumab component^{55–58,60}, two studies had a letrozole component^{43,45}, two trials had a pazopanib component^{48,54}, two trials had radiotherapy intervention^{47,49}, one trial had both Paclitaxel and oxaliplatin components⁴², one trial had both paclitaxel and trastuzumab components⁵⁹, and one trial had both trastuzumab and aromatase inhibitors (AI)⁶¹. All these trials were randomized with about equal numbers of individuals assigned to the lapatinib therapy and control groups, except for NCT00371566 which used a 2:1 ratio⁵² and NCT00558103 which used a 3:1 ratio⁴⁸. Dosage of lapatinib ranged from 750 to 1500 mg daily. Summarized in Table S2 (Supporting Information) is analysis of the risks of bias about the clinical trials collected.

Major pain events. Among all investigated clinical trials, 23 different forms of pain were complained by the patients. Most of these forms of pain had a relatively small sample size when we combined the data from different trials, making the analyses on those forms of pain unreliable. Hence, only the forms of pain with more than 5000 patients involved in both the treatment and control groups are discussed here as the “major pain events”. A total of six forms of pain met these criteria, namely headache, bone pain, arthralgia, myalgia, pain in extremity, and musculoskeletal pain. Within the top-six, the patient count ranged from 6563 to 12,661. Outside of the top-six, the largest patient count was only 3438 (see Supporting Information Table S3).

Within the top-six forms of pain, all the trials for each form of pain are given in Supporting Information (Figures S2-1 to S2-3) with the meta-analysis. Depicted in Fig. 1 are only the largest two trials for each form of pain.

A total of 391 bone pain events occurred among 6563 patients in 8 related trials, as seen in Figure S2-1 (upper panel). Within the 8 trials, in each of the largest two trials (Fig. 1A), the treatment group with lapatinib significantly decreased the bone pain events compared to the control group: $P = 0.0155$ for NCT00490139 (with a total of 4137 patients) and $P = 0.0204$ for NCT00073528 (with a total of 1278 patients). For each of the remaining trials, the sample size was too small to demonstrate the significance difference ($P > 0.05$) between the lapatinib group and control group. Overall, according to the meta-analysis, lapatinib was associated with 25% reduction in the odds of bone pain (OR 0.75; 95% CI 0.61–0.93; $P = 0.0071$). Here, OR (Odds Ratio) represents the ratio of odds

Clinical trial #	No. of individuals tolled	Male (%)	Patient type	Mean age (standard deviation) in years	Lapatinib dosage
NCT00486954 ⁴³	272	79	Gastric cancer	60.5 (10.2)	1500 mg q.d
NCT00387127 ⁴⁷	66	90	Head and neck cancer	56.1 (6.2)	1500 mg q.d
NCT00558103 ⁴⁸	51	0	Breast cancer	53.0 (11.3)	1500 mg q.d
NCT00374322 ⁴⁶	3147	0	Breast cancer	52.0 (9.9)	1500 mg q.d
NCT00430781 ⁵⁴	150	0	Cervical cancer	49.5 (10.9)	1500 mg q.d
NCT00680901 ⁴²	537	75	Gastric cancer	58.9 (11.2)	1500 mg q.d
NCT00553358 ⁵⁵	301	0	Breast cancer	50.0 (23–80)*	1000 mg q.d
NCT00371566 ⁵²	105	81	Head and neck cancer	57.1 (10.8)	1500 mg q.d
NCT00424255 ⁴⁹	685	83	Head and neck cancer	53.8 (9.1)	1500 mg q.d
NCT00490139 ³⁶	4137	0	Breast cancer	51.0 (10.2)	1000 mg q.d
NCT00073528 ⁴³	1278	0	Breast cancer	63.1 (9.8)	1500 mg q.d
NCT00429299 ⁵⁷	82	0	Breast cancer	49.3 (26–68)*	1000 mg q.d
NCT00390455 ⁴⁴	278	0	Breast cancer	N/A	1500 mg q.d
NCT00422903 ⁴⁵	92	0	Breast cancer	70 (47–88)*	1500 mg q.d
NCT00524303 ⁵⁸	63	0	Breast cancer	50.4 (10.0)	1000 mg q.d
NCT00075270 ⁵⁰	579	0	Breast cancer	51.8 (10.7)	1500 mg q.d
NCT00770809 ⁵⁹	230	0	Breast cancer	49.4 (24–75)*	750 mg q.d
NCT00281658 ⁵¹	443	0	Breast cancer	49.2 (10.3)	1500 mg q.d
NCT00968968 ⁶⁰	35	0	Breast cancer	56.5 (11.4)	1000 mg q.d
NCT01160211 ⁶¹	234	0	Breast cancer	56.4 (10.2)	1000 mg q.d

Table 1. Basic information about the clinical trials analyzed in the meta-analysis. *The trials in which the age information was reported as mean (range). N/A not available.

of the pain event in the lapatinib group to odds of the event in the control group (see Supporting Information for the OR formula) (Figure S2-1, upper panel).

A total of 1449 arthralgia events occurred among 11,268 patients in 15 related trials, as seen in Figure S2-1 (middle panel). Within the 15 trials, in each of the largest two trials (Fig. 1B), the treatment group with lapatinib significantly decreased the arthralgia events compared to the control group: $P = 0.0001$ for NCT00490139 and $P = 0.0008$ for NCT00374322 (with a total of 3147 patients). For each of the remaining trials, the sample size was too small for the arthralgia events to demonstrate significant difference. Overall, lapatinib was associated with 20% reduction in the odds of arthralgia (OR 0.80; 95% CI 0.70–0.93; $P = 0.0025$) (Figure S2-1 middle panel).

A total of 433 musculoskeletal pain events occurred among 7664 patients in 10 related trials, as seen in Figure S2-1 (bottom panel). Within the 10 trials, the largest trial (see Fig. 1C for the largest two trials) was NCT00490139 in which the treatment group with lapatinib significantly decreased the musculoskeletal pain events compared to the control group ($P = 0.0240$). For each of the remaining trials, the difference between the two groups was not statistically significant. Overall, lapatinib was associated with 21% reduction in the odds of musculoskeletal pain (OR 0.79; 95% CI 0.65–0.96; $P = 0.0189$) (Figure S2-1 bottom panel).

A total of 1320 headache events were reported among 12,661 patients in 19 related trials, as shown in Figure S2-2 (upper panel). Within the 19 trials, in each of the largest two trials (Fig. 1D), the treatment group with lapatinib significantly decreased the headache events compared to the control group: $P = 0.0008$ for NCT00490139 and $P = 0.0085$ for NCT00374322. For each of the remaining trials, the sample size was too small for the headache events to demonstrate significant difference. Overall, lapatinib was associated with 19% reduction in the odds of headache (OR 0.81; 95% CI 0.70–0.95; $P = 0.0078$) (Figure S2-2 upper panel).

A total of 597 pain-in-extremity events occurred among 6887 patients in 10 related trials (Figure S2-2, bottom panel). Within the 10 trials, the largest trial NCT00490139 (see Fig. 1E for the largest two trials) revealed that the treatment group with lapatinib significantly decreased the pain-in-extremity events compared to the control group ($P = 0.0217$). For each of the remaining trials, the difference between the two groups was not statistically significant. Overall, lapatinib was associated with 18% reduction in the odds of pain in extremity (OR 0.82; 95% CI 0.70–0.98; $P = 0.0269$) (Figure S2-2, bottom panel).

Notably, within the five forms of pain events discussed above, the largest trial is always NCT00490139 in which the treatment group with lapatinib significantly decreased each form of pain events compared to the control group.

A total of 969 myalgia events occurred among 8121 patients in 14 related trials. In each of these trials, the difference between the two groups in myalgia events was not statistically significant, although the largest trial (NCT00490139, $P = 0.0596$) was close to $P = 0.05$. Overall, lapatinib was associated with 4% reduction in the odds of myalgia (OR 0.96; 95% CI 0.81–1.14; $P = 0.6647$) (Figure S2-3. Interestingly, when only the largest two trials (Fig. 1F) are included in the analysis (ignoring the smaller trials), lapatinib significantly reduced the pain events, with 18% reduction in the odds of myalgia (OR 0.82; 95% CI 0.68–0.98; $P = 0.0261$).

When all the above-mentioned data for the six forms of pain were combined, a total of 2370 pain events were recorded among 6435 patients (within the six forms of pain) in the treatment group while there were 2789

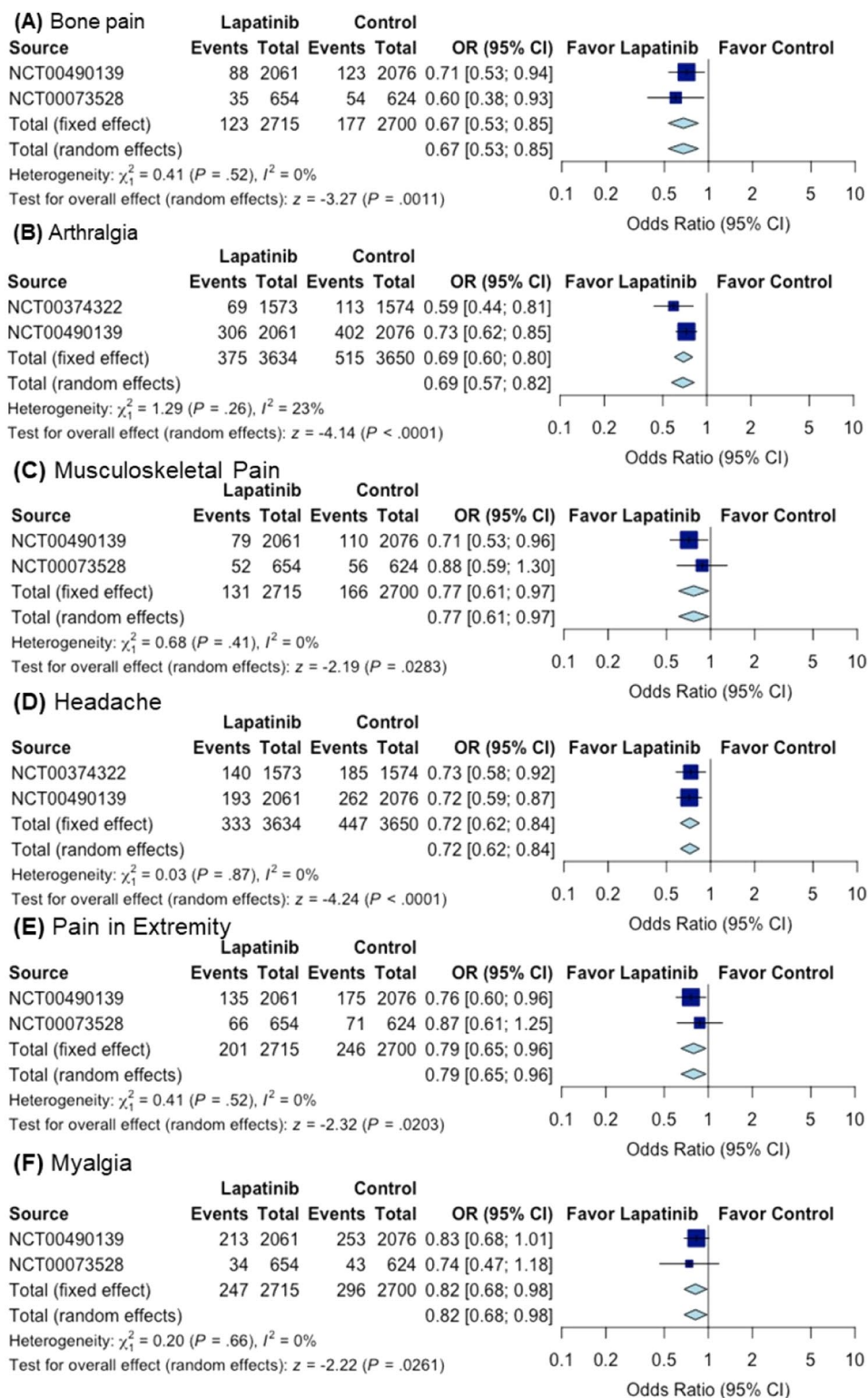


Figure 1. Overall effect of lapatinib treatment on (A) bone pain, (B) arthralgia, (C) musculoskeletal pain, (D) headache, (E) pain in extremity, and (F) myalgia in the largest two trials for each form of pain. The corresponding figures of the full meta-analysis with all the trials for each form of pain are provided in Supporting Information (Figures S2-1 to S2-3). Sizes of data markers are proportional to the amount of data contributed by each trial. OR odds ratio, CI confidence interval.

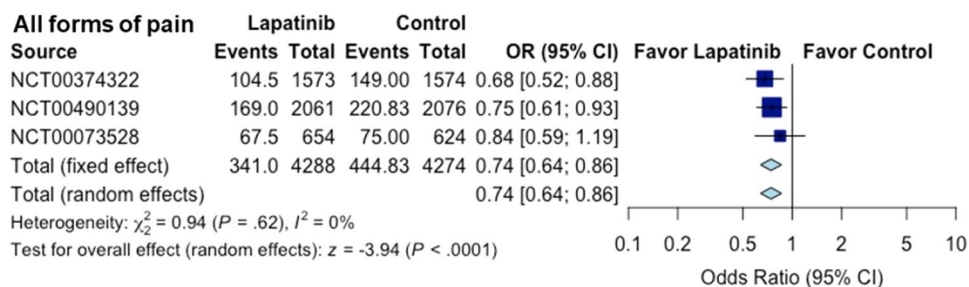


Figure 2. Overall effect of the lapatinib treatment on various forms of pain in all the trials included in Fig. 1. The corresponding figure of the full meta-analysis with all the trials for the six forms of pain is provided in Supporting Information (Figure S2-4). Sizes of data markers are proportional to the amount of data contributed by each trial. OR odds ratio, CI confidence interval.

pain events (within the six forms of pain) among 6318 patients in the control group. We calculated the average pain event counts in each trial and used this data to analyze the overall analgesic effect. According to the meta-analysis with all the trials (Figure S2-4), lapatinib was associated with a significant 21% reduction in the odds of the major pain events (OR 0.79; CI 0.70–0.89; $P = 0.0002$). When only the largest trials involved in Fig. 1 are included, lapatinib was associated with a significant 26% reduction in the odds of the major pain events (OR 0.74; CI 0.64–0.86; $P < 0.0001$) (Fig. 2).

For the above meta-analyses, all P values for heterogeneity were greater than 0.1 and all Higgins' I^2 values were less than 25%, indicating no significant study bias was observed in the corresponding funnel plots (Figure S3-1 to S3-7).

In the ROBIS analysis, we did not observe any significant source of biases in these reviews. The analysis table can be found in the Supporting Information.

Lapatinib is an effective pain-relieving agent against various forms of pain. The general analgesic effects on various forms of pain have been clearly manifested in this non-conventional meta-analysis. In all the analyses we observed < 1 OR values, which means that lapatinib can relieve these forms of pain in cancer patients. Besides, in at least five out of six analyses (headache, bone pain, arthralgia, pain in extremity, and musculoskeletal pain), the P values were < 0.05 , which means that the reduction of OR on these forms of pain was statistically significant.

Both Higgins' I^2 and P for heterogeneity showed that there was no significant heterogeneity in the trials we used for analysis. Funnel plots (Figure S3-1 to S3-7) also showed there was no significant study bias across these trials, with only one outlier in the arthralgia analysis.

Other factors have limited impacts on the analgesic effects of lapatinib. As listed in Table 1, the trials involved in the meta-analysis are different on several factors not related to lapatinib, and we would like to know whether these factors impact pain-related outcomes. Hence, we grouped the trials in the overall effect analysis by these other factors to investigate their impacts on the analgesic effects of lapatinib.

As seen in Figure S4-1, the analgesic effects of lapatinib in the masked group (OR 0.79; 95% CI 0.66–0.95) was almost the same as the open label group (OR 0.79; 95% CI 0.67–0.94) with $P > 0.99$, indicating no significant difference.

Similarly, as showed in Figure S4-2, we found that the cancer type of the patient recruited did not have a significant influence on the analgesic effects of lapatinib. Particularly, for gastric cancer patients: OR 0.71; 95% CI 0.27–1.89. For head and neck cancer patients: OR 0.69; 95% CI 0.40–1.18. For breast cancer patients: OR 0.80; 95% CI 0.70–0.91. For cervical cancer patients: OR 0.60; 95% CI 0.20–1.77. For the differences between different subgroups: $P = 0.91$.

As discussed in our previous report⁴⁰, the blood concentration of lapatinib should be well above the necessary concentration to inhibit mPGES-1 under all doses used in these clinical trials, thus the difference should not be distinguishable. As showed in Figure S4-3, the differences between these groups with different doses were very small. Particularly, for 1500 mg/day group: OR 0.80; 95% CI 0.68–0.94. For 1000 mg/day group: OR 0.78; 95% CI 0.64–0.95. For 750 mg/day group: OR 0.83; 95% CI 0.36–1.94. For subgroup differences: $P = 0.95$. These observations agree with our prediction of the analgesic effects of lapatinib.

Although only three trials were purely placebo-controlled, in all the other trials the additional components were present in both the treatment and control groups. Since the existence of lapatinib was the only variable between the experimental and control groups, the effects of lapatinib can still be reasonably evaluated in this case. As showed in Figure S4-4, the analysis indicated that the presence of other drugs had no significant influence on the analgesic effects of lapatinib in all these cases. However, notably, when paclitaxel was also used, lapatinib users had a relatively higher chance to report pain (OR 1.14; 95% CI 0.82–1.60), while in all the other groups the chance of pain was all reduced. When we compared the paclitaxel using group with the pure placebo control group (OR 0.69; 95% CI 0.54–0.89), the difference was statistically significant (Figure S4-5). This phenomenon, however, was not observed when patients took other drugs together with paclitaxel (i.e. when CapeOx was taken

together with paclitaxel: OR 0.41; 95% CI 0.16–1.09; when trastuzumab was taken together with paclitaxel: OR 0.83; 95% CI 0.36–1.94). The reason of this interesting observation is not very clear at this point; additional clinical data will be needed to see whether it was just caused by error/uncertainty due to the small sample sizes.

Since these three trials showed significant differences with the other trials, we further tested removing these three trials in the myalgia analysis, and the obtained new results (without these three trials) showed that the pain-relieving effects were statistically significant (Figure S5-1. OR 0.84; 95% CI 0.72–0.99; $P = 0.0376$). We also tested to remove these three trials in the analysis of all other forms of pain, resulting in significant improvement on the statistical significance (P value) for all forms of pain (Figure S5-2 to S5-6).

The analgesic effects of lapatinib are not related to EGFR/HER2 inhibition. Since lapatinib is an FDA-approved drug for cancer treatment, one might wonder whether the analgesic effects of lapatinib were caused by the inhibition of EGFR/HER2 rather than mPGES-1. We investigated the adverse effects data from trial NCT00656136, a phase III trial of another FDA-approved EGFR/HER2 dual inhibitor afatinib⁶². As depicted in Figure S6, although the sample size is small, the data clearly showed that afatinib had no observable analgesic effects. Notably, the data shown in Figure S6 suggest the afatinib treatment actually increased the events of pain in extremity ($P = 0.0132$), whereas the lapatinib decreased the events of pain in extremity according to the above analysis (Figure S2-2, bottom panel). Therefore, we believe that the analgesic effects of lapatinib are not caused by the inhibition of EGFR/HER2.

Discussion

This CDM study is the first meta-analysis (conducted in a non-conventional way) on the analgesic effects of lapatinib. Conventional methods of meta-analysis have been focused on analysis of available clinical data listed as the primary or secondary outcomes of clinical trials, whereas the required primary or secondary outcomes of clinical trials for the conventional meta-analysis are not available for pain relief with lapatinib. In order to examine the possible analgesic effects of lapatinib, we first collected all available lapatinib-related clinical data about pain beyond the primary and secondary outcomes of clinical trials, and then analyzed the collected clinical data by using a meta-analysis protocol in a non-conventional way. So, our non-conventional meta-analysis was not limited to the primary and secondary outcomes of clinical trials such that more clinical data became available for the meta-analysis. According to our CDM results, lapatinib therapy is associated with a significant reduction in various forms of pain, including musculoskeletal pain, bone pain, headache, arthralgia, and pain in extremity, in cancer patients. Our CDM data have clearly demonstrated the favorable analgesic effects of lapatinib in cancer patients.

Because pain was not considered as a primary or secondary (due to successful anti-cancer effect) outcome during any clinical trial with lapatinib so far, the pain data available is limited to the pain events (i.e. there was pain or not) without any information about the pain severity using any pain scoring system. A pain killer might be able to relieve the pain, but not necessarily be able to completely kill the pain; in such event, the subject would still report the pain event without any pain severity information.

Although the present CDM or non-conventional meta-analysis used clinical data for cancer patients only, it is reasonable to assume that lapatinib will also work similarly on non-cancerous patients with the same forms of pain. Nevertheless, we should try to lower the dose of lapatinib to minimize other known adverse effects.

Further, all the clinical trials analyzed in this study were not originally designed to investigate the analgesic effects. As a result, none of the trials, including that by Kaufman et al.⁴¹, evaluated the severity of pain (pain intensity with an appropriate pain score). A pain score-based clinical trial could better quantify the efficacy of lapatinib in pain relief, guiding the best possible dosage for analgesic effects to minimize its adverse effects. Besides, all these trials were conducted in cancer patients. Although we have demonstrated that the analgesic effects of lapatinib are not related to its anti-cancer effects and lapatinib is expected to have the similar analgesic effects in non-cancer patients, we still would like to have more direct evidence for the analgesic effects of lapatinib in non-cancer patients with pain. The direct evidence may be provided by conducting a new, sophisticatedly designed clinical trial in a general pain population which may manifest the true analgesic power of lapatinib. Only an appropriately designed clinical trial can verify whether lapatinib can be used to effectively relieve pain. A truly effective non-opioid analgesic would be particularly valuable for chronic pain patients (who suffer pain for at least 3 months) to relieve the long-lasting pain.

In addition, it is also necessary to assess any possible side effects of lapatinib in non-cancer patients along with the efficacy study. Concerning commonly experienced occurring adverse effects of lapatinib reported in the oncology trials, in a Phase I dose-escalation study⁶³, the highest dose of lapatinib used was 7000 mg per day in twice-daily dosing with no dose-limiting toxicity (DLT) found, demonstrating the safety. On the other hand, lapatinib does have some dose-dependent adverse effects; diarrhea is the most common adverse effect with the high doses. With the commonly used doses (1250 mg and 1500 mg once daily) of lapatinib, diarrhea may occur in some patients within 6 days¹⁴. If occurs, diarrhea usually lasts 4 to 5 days⁶⁴ before the body has adapted to the drug. Lapatinib-induced diarrhea is usually low-grade (Grade 1, i.e. an increase of less than 4 stools a day)⁶⁴. To balance the possible beneficial and adverse effects of lapatinib for pain relief, one of the primary measures for a clinical trial should be the overall quality of life (QoL) defined by the American Chronic Pain Association (ACPA)⁶⁵. The ACPA-defined QoL is measured by asking each subject to choose the most reasonable one of the 11 descriptions associated with the QoL scale of 0 (the worst QoL: Stay in bed all day; Feel hopeless and helpless about life) to 10 (the best QoL: Go to work/volunteer each day; Normal daily activities each day; Have a social life outside of work; Take an active part in family life). If the analgesic efficacy of lapatinib can be demonstrated, and if there are no intolerable side effects in non-cancer patients as well, lapatinib may be repurposed as a novel type of pain killer to improve the overall QoL of non-cancer patients.

In addition, the general strategy of the CDM or non-conventional meta-analysis used in this study may also be used to examine various therapeutic effects of other drugs beyond the primary and secondary outcomes of the clinical trials.

Methods

Data sources and searches. The primary aim of this CDM or non-conventional meta-analysis was to determine the analgesic effects of lapatinib in cancer patients. A comprehensive MEDLINE database search on clinicaltrials.gov was performed to find studies using the search term lapatinib, Tykerb, or GW572016. Data concerning study design, baseline patient characteristics, treatment and results (specifically the Adverse Effects section) were extracted from these reports. All the clinical trials were updated until June 30, 2020.

Study selection and data extraction. After the comprehensive initial database search, there were 327 related records identified. Because the information about pain was buried in the adverse effect data, trials without adverse effect data posted or without using lapatinib in the treatment group were excluded, leaving 101 studies available for further investigation. Among the remaining trials, non-randomized trials or single-armed trials were also removed, leaving 20 trials for final analysis (Figure S1). Within the 20 trials, the adverse effect data can be obtained from the related publications for 17 trials, and for the remaining three clinical trials the authors only published their partial results as abstracts^{45,56,60}. Notably, for all the 20 trials, the adverse effect data have been posted online. Hence, all the pain-related data were collected from clinicaltrials.gov. Since data in the “Serious adverse effects” section across all the trials are all very small (for all forms of pain, no trial has a reported patient count greater than 5, see Table S1), these data were not included in this meta-analysis. Only data from the “Other adverse effects” section were used in this analysis.

Statistical analysis. The R package meta 4.11-0⁶⁶ was used for all the related analyses and plotting. The Cochrane statistic and Higgins’ I^2 were calculated for the assessment of heterogeneity across the trials. Odds ratios (OR) and 95% confidence intervals (CI) of various forms of pain were calculated with both fixed and random-effects model (DerSimonian-Laird estimator for τ^2) from each data point in each study using the Mantel-Haenszel method. The patients allocated to an intervention in a specific trial were only compared with those in the control group of the same trial, avoiding direct comparisons of patients across different trials with other different conditions. *P* value of less than 0.05 was judged as statistically significant. To assess study bias, we generated funnel plots of the logarithm of treatment effects and compared it with their standard errors for each meta-analysis. The ROBIS⁶⁷ was used to assess the risks of bias in this meta-analysis.

It should be noted that possible confounders, such as demographic factors and other pathologies including psychiatric disorders, have not been accounted for in the statistical analysis, because these factors were not considered in the original studies for the pain events. The desirable data for examining these confounders are not available in the original clinical reports.

Received: 3 July 2020; Accepted: 14 January 2021

Published online: 11 February 2021

References

- Basbaum, A. I., Bautista, D. M., Scherrer, G. & Julius, D. Cellular and molecular mechanisms of pain. *Cell* **139**, 267–284 (2009).
- Hyllested, M., Jones, S., Pedersen, J. & Kehlet, H. Comparative effect of paracetamol, NSAIDs or their combination in postoperative pain management: a qualitative review. *Br. J. Anaesth.* **88**, 199–214 (2002).
- Mason, L., Moore, R. A., Edwards, J. E., Derry, S. & McQuay, H. J. Topical NSAIDs for chronic musculoskeletal pain: systematic review and meta-analysis. *BMC Musculoskelet. Disord.* **5**, 28 (2004).
- Nissen, S. E. *et al.* Cardiovascular safety of celecoxib, naproxen, or ibuprofen for arthritis. *N. Engl. J. Med.* **375**, 2519–2529. <https://doi.org/10.1056/NEJMoa1611593> (2016).
- Felson, D. T. Safety of nonsteroidal antiinflammatory drugs. *N. Engl. J. Med.* **375**, 2595–2596. <https://doi.org/10.1056/NEJMe1614257> (2016).
- Fahmi, H. MPGES-1 as a novel target for arthritis. *Curr. Opin. Rheumatol.* **16**, 623–627 (2004).
- Engblom, D. *et al.* Microsomal prostaglandin E synthase-1 is the central switch during immune-induced pyresis. *Nat. Neurosci.* **6**, 1137–1138. <https://doi.org/10.1038/nn1137> (2003).
- Trebino, C. E. *et al.* Impaired inflammatory and pain responses in mice lacking an inducible prostaglandin E synthase. *Proc. Natl. Acad. Sci. USA* **100**, 9044–9049. <https://doi.org/10.1073/pnas.1332766100> (2003).
- Saha, S., Engström, L., Mackerlova, L., Jakobsson, P. J. & Blomqvist, A. Impaired febrile responses to immune challenge in mice deficient in microsomal prostaglandin E synthase-1. *Am. J. Physiol. Regul. Integr. Comp. Physiol.* **288**, 100–107 (2005).
- Cheng, Y. *et al.* Cyclooxygenases, microsomal prostaglandin E synthase-1, and cardiovascular function. *J. Clin. Investig.* **116**, 1391–1399 (2006).
- Wang, M. *et al.* Deletion of microsomal prostaglandin E synthase-1 augments prostacyclin and retards atherogenesis. *Proc. Natl. Acad. Sci. USA* **103**, 14507–14512 (2006).
- Wang, M. *et al.* Microsomal prostaglandin E synthase-1 deletion suppresses oxidative stress and angiotensin II-induced abdominal aortic aneurysm formation. *Circulation* **117**, 1302–1309 (2008).
- Sampey, A. V., Monrad, S. & Crofford, L. J. Microsomal prostaglandin E synthase-1: the inducible synthase for prostaglandin E2. *Arthritis Res. Ther.* **7**, 114–117 (2005).
- Kojima, F. *et al.* Defective generation of a humoral immune response is associated with a reduced incidence and severity of collagen-induced arthritis in microsomal prostaglandin E synthase-1 null mice. *J. Immunol.* **180**, 8361–8368 (2008).
- Kojima, E., Matnani, R. G., Kawai, S., Ushikubi, F. & Crofford, L. J. Potential roles of microsomal prostaglandin E synthase-1 in rheumatoid arthritis. *Inflamm. Regen.* **31**, 157–166 (2011).
- Schiffler, M. A. *et al.* Discovery and characterization of 2-acylaminoimidazole microsomal prostaglandin E synthase-1 inhibitors. *J. Med. Chem.* **59**, 194–205. <https://doi.org/10.1021/acs.jmedchem.5b01249> (2016).

17. Hieke, M. *et al.* Discovery and biological evaluation of a novel class of dual microsomal prostaglandin E2 synthase-1/5-lipoxygenase inhibitors based on 2-[(4,6-diphenethoxy)pyrimidin-2-yl]thio]hexanoic acid. *J. Med. Chem.* **54**, 4490–4507. <https://doi.org/10.1021/jm200092b> (2011).
18. Hanke, T. *et al.* Aminothiazole-featured pirinixic acid derivatives as dual 5-lipoxygenase and microsomal prostaglandin E2 synthase-1 inhibitors with improved potency and efficiency in vivo. *J. Med. Chem.* **56**, 9031–9044. <https://doi.org/10.1021/jm401557w> (2013).
19. Terracciano, S. *et al.* Structural insights for the optimization of dihydropyrimidin-2(1H)-one based mPGES-1 inhibitors. *ACS Med. Chem. Lett.* **6**, 187–191. <https://doi.org/10.1021/ml500433j> (2015).
20. Shiro, T., Kakiguchi, K., Takahashi, H., Nagata, H. & Tobe, M. 7-Phenyl-imidazoquinolin-4(5H)-one derivatives as selective and orally available mPGES-1 inhibitors. *Bioorg. Med. Chem.* **21**, 2868–2878. <https://doi.org/10.1016/j.bmc.2013.03.069> (2013).
21. Shiro, T., Kakiguchi, K., Takahashi, H., Nagata, H. & Tobe, M. Synthesis and biological evaluation of substituted imidazoquinoline derivatives as mPGES-1 inhibitors. *Bioorg. Med. Chem.* **21**, 2068–2078. <https://doi.org/10.1016/j.bmc.2013.01.018> (2013).
22. Shiro, T. *et al.* Synthesis and SAR study of imidazoquinolines as a novel structural class of microsomal prostaglandin E(2) synthase-1 inhibitors. *Bioorg. Med. Chem. Lett.* **22**, 285–288. <https://doi.org/10.1016/j.bmcl.2011.11.015> (2012).
23. Liedtke, A. J. *et al.* Arylpyrrolizines as inhibitors of microsomal prostaglandin E2 synthase-1 (mPGES-1) or as dual inhibitors of mPGES-1 and 5-lipoxygenase (5-LOX). *J. Med. Chem.* **52**, 4968–4972. <https://doi.org/10.1021/jm900481c> (2009).
24. Shang, E. *et al.* Benzo[d]isothiazole 1,1-dioxide derivatives as dual functional inhibitors of 5-lipoxygenase and microsomal prostaglandin E(2) synthase-1. *Bioorg. Med. Chem. Lett.* **24**, 2764–2767. <https://doi.org/10.1016/j.bmcl.2014.04.006> (2014).
25. Wu, T. Y. *et al.* Biarylimidazoles as inhibitors of microsomal prostaglandin E2 synthase-1. *Bioorg. Med. Chem. Lett.* **20**, 6978–6982. <https://doi.org/10.1016/j.bmcl.2010.09.129> (2010).
26. Wiegand, A., Hanekamp, W., Griessbach, K., Fabian, J. & Lehr, M. Pyrrole alcanoic acid derivatives as nuisance inhibitors of microsomal prostaglandin E2 synthase-1. *Eur. J. Med. Chem.* **48**, 153–163. <https://doi.org/10.1016/j.ejmech.2011.12.009> (2012).
27. Chini, M. G. *et al.* Design and synthesis of a second series of triazole-based compounds as potent dual mPGES-1 and 5-lipoxygenase inhibitors. *Eur. J. Med. Chem.* **54**, 311–323. <https://doi.org/10.1016/j.ejmech.2012.05.014> (2012).
28. Giroux, A. *et al.* Discovery of disubstituted phenanthrene imidazoles as potent, selective and orally active mPGES-1 inhibitors. *Bioorg. Med. Chem. Lett.* **19**, 5837–5841. <https://doi.org/10.1016/j.bmcl.2009.08.085> (2009).
29. Xu, D. *et al.* MF63 [2-(6-chloro-1H-phenanthro[9,10-d]imidazol-2-yl)-isophthalonitrile], a selective microsomal prostaglandin E synthase-1 inhibitor relieves pyresis and pain in preclinical models of inflammation. *J. Pharmacol. Exp. Ther.* **326**, 754–763. <https://doi.org/10.1124/jpet.108.138776> (2008).
30. Lee, K. *et al.* Fragment-based discovery of novel and selective mPGES-1 inhibitors. Part 1: identification of sulfonamido-1,2,3-triazole-4,5-dicarboxylic acid. *Bioorg. Med. Chem. Lett.* **23**, 75–80. <https://doi.org/10.1016/j.bmcl.2012.11.019> (2013).
31. Cote, B. *et al.* Substituted phenanthrene imidazoles as potent, selective, and orally active mPGES-1 inhibitors. *Bioorg. Med. Chem. Lett.* **17**, 6816–6820. <https://doi.org/10.1016/j.bmcl.2007.10.033> (2007).
32. Riendeau, D. *et al.* Inhibitors of the inducible microsomal prostaglandin E2 synthase (mPGES-1) derived from MK-886. *Bioorg. Med. Chem. Lett.* **15**, 3352–3355. <https://doi.org/10.1016/j.bmcl.2005.05.027> (2005).
33. Bruno, A. *et al.* Effects of AF3442 [N-(9-ethyl-9H-carbazol-3-yl)-2-(trifluoromethyl)benzamide], a novel inhibitor of human microsomal prostaglandin E synthase-1, on prostanoid biosynthesis in human monocytes in vitro. *Biochem. Pharmacol.* **79**, 974–981. <https://doi.org/10.1016/j.bcp.2009.11.011> (2010).
34. Koeberle, A. *et al.* Discovery of benzo[g]indol-3-carboxylates as potent inhibitors of microsomal prostaglandin E(2) synthase-1. *Bioorg. Med. Chem.* **17**, 7924–7932. <https://doi.org/10.1016/j.bmc.2009.10.025> (2009).
35. Walker, D. P. *et al.* Synthesis and biological evaluation of substituted benzoxazoles as inhibitors of mPGES-1: use of a conformation-based hypothesis to facilitate compound design. *Bioorg. Med. Chem. Lett.* **23**, 1120–1126. <https://doi.org/10.1016/j.bmcl.2012.11.107> (2013).
36. Wang, J. *et al.* Selective inducible microsomal prostaglandin E(2) synthase-1 (mPGES-1) inhibitors derived from an oxicam template. *Bioorg. Med. Chem. Lett.* **20**, 1604–1609. <https://doi.org/10.1016/j.bmcl.2010.01.060> (2010).
37. Chen, X. *et al.* Long-acting cocaine hydrolase for addiction therapy. *Proc. Natl. Acad. Sci. USA* **113**, 422–427. <https://doi.org/10.1073/pnas.1517713113> (2016).
38. Chen, X. *et al.* Development of Fc-fused cocaine hydrolase for cocaine addiction: catalytic and pharmacokinetic properties. *AAPS J.* **20**, 53. <https://doi.org/10.1208/s12248-12018-10214-12249> (2018).
39. Zhou, S. *et al.* In silico observation of the conformational opening of the glutathione-binding site of microsomal prostaglandin E2 synthase-1. *J. Chem. Inf. Model.* **59**, 3839–3845 (2019).
40. Zhou, S. *et al.* DREAM-in-CDM approach and identification of a new generation of anti-inflammatory drug targeting mPGES-1. *Sci. Rep.* **10**, 10187. <https://doi.org/10.1038/s41598-10020-67283-10180> (2020).
41. Kaufman, B. *et al.* Impact of lapatinib monotherapy on QOL and pain symptoms in patients with HER2+ relapsed or refractory inflammatory breast cancer. *Curr. Med. Res. Opin.* **26**, 1065–1073. <https://doi.org/10.1185/03007991003680323> (2010).
42. Hecht, J. R. *et al.* Lapatinib in combination with capecitabine plus oxaliplatin in human epidermal growth factor receptor 2-positive advanced or metastatic gastric, esophageal, or gastroesophageal adenocarcinoma: TRIO-013/LOGiC—a randomized phase III trial. *J. Clin. Oncol.* **34**, 443–451 (2015).
43. Schwartzberg, L. S. *et al.* Lapatinib plus letrozole as first-line therapy for HER2+ hormone receptor-positive metastatic breast cancer. *Oncologist* **15**, 122–129 (2010).
44. Burstein, H. J. *et al.* Endocrine therapy with or without inhibition of epidermal growth factor receptor and human epidermal growth factor receptor 2: a randomized, double-blind, placebo-controlled phase III trial of fulvestrant with or without lapatinib for postmenopausal women with hormone receptor-positive advanced breast cancer—CALGB 40302 (Alliance). *J. Clin. Oncol.* **32**, 3959 (2014).
45. Guarneri, V. *et al.* Preoperative letrozole plus lapatinib/placebo for HR+/HER2 negative operable breast cancer: Biomarker analyses of the randomized phase II LET-LOB study. *J. Clin. Oncol.* **31**(Suppl. 15), 530. https://doi.org/10.1200/jco.2013.31.15_suppl.530 (2013).
46. Goss, P. E. *et al.* Adjuvant lapatinib for women with early-stage HER2-positive breast cancer: a randomised, controlled, phase 3 trial. *Lancet Oncol.* **14**, 88–96 (2013).
47. Harrington, K. *et al.* Randomised Phase II study of oral lapatinib combined with chemoradiotherapy in patients with advanced squamous cell carcinoma of the head and neck: rationale for future randomised trials in human papilloma virus-negative disease. *Eur. J. Cancer* **49**, 1609–1618 (2013).
48. Cristofanilli, M. *et al.* A randomized phase II study of lapatinib versus pazopanib in patients with HER2+ inflammatory breast cancer. *Breast Cancer Res. Treat.* **137**, 471–482 (2013).
49. Harrington, K. *et al.* Postoperative adjuvant lapatinib and concurrent chemoradiotherapy followed by maintenance lapatinib monotherapy in high-risk patients with resected squamous cell carcinoma of the head and neck: a phase III, randomized, double-blind, placebo-controlled study. *J. Clin. Oncol.* **33**, 4202–4209 (2015).
50. Di Leo, A. *et al.* Phase III, double-blind, randomized study comparing lapatinib plus paclitaxel with placebo plus paclitaxel as first-line treatment for metastatic breast cancer. *J. Clin. Oncol.* **26**, 5544 (2008).
51. Guan, Z. *et al.* Randomized trial of lapatinib versus placebo added to paclitaxel in the treatment of human epidermal growth factor receptor 2-overexpressing metastatic breast cancer. *J. Clin. Oncol.* **31**, 1947–1953 (2013).

52. Del Campo, J. *et al.* Effects of lapatinib monotherapy: results of a randomised phase II study in therapy-naïve patients with locally advanced squamous cell carcinoma of the head and neck. *Br. J. Cancer* **105**, 618 (2011).
53. Satoh, T. *et al.* Lapatinib plus paclitaxel versus paclitaxel alone in the second-line treatment of HER2-amplified advanced gastric cancer in Asian populations: TyTAN—a randomized, phase III study. *J. Clin. Oncol.* **32**, 2039–2049 (2014).
54. Monk, B. J. *et al.* Phase II, open-label study of pazopanib or lapatinib monotherapy compared with pazopanib plus lapatinib combination therapy in patients with advanced and recurrent cervical cancer. *J. Clin. Oncol.* **28**, 3562–3569 (2010).
55. Baselga, J., Bradbury, I. & Eidtmann, H. First results of the NeoALTTO trial (BIG 01–06/EGF 106903): Lapatinib with Trastuzumab for HER2-positive early breast cancer (NeoALTTO): a randomized open label multicenter phase 3 trial. *Lancet* **379**, 633–640 (2012).
56. Piccart-Gebhart, M. *et al.* P118 ALTTO (adjuvant lapatinib and/or trastuzumab treatment optimisation) study [BIG 2–06/N063D/EGF106708]: a phase III study for HER2-overexpressing early breast cancer (BC). *Breast* **16**, S46–S47 (2007).
57. Guarneri, V. *et al.* Preoperative chemotherapy plus trastuzumab, lapatinib, or both in human epidermal growth factor receptor 2-positive operable breast cancer: results of the randomized phase II CHER-LOB study. *J. Clin. Oncol.* **30**, 1989–1995 (2012).
58. Holmes, F. A. *et al.* Pathologic complete response after preoperative anti-HER2 therapy correlates with alterations in PTEN, FOXO, phosphorylated Stat5, and autophagy protein signaling. *BMC Res. Notes* **6**, 507 (2013).
59. Carey, L. A. *et al.* Molecular heterogeneity and response to neoadjuvant human epidermal growth factor receptor 2 targeting in CALGB 40601, a randomized phase III trial of paclitaxel plus trastuzumab with or without lapatinib. *J. Clin. Oncol.* **34**, 542 (2016).
60. Lin, N. U. *et al.* Human epidermal growth factor receptor 2 (HER2) suppression with the addition of lapatinib to trastuzumab in HER2-positive metastatic breast cancer (HALT: LPT112515). *J. Clin. Oncol.* **31**(Suppl. 15), 664. https://doi.org/10.1200/jco.2013.31.15_suppl.tps664 (2013).
61. Johnston, S. R. *et al.* Phase III, randomized study of dual human epidermal growth factor receptor 2 (HER2) blockade with lapatinib plus trastuzumab in combination with an aromatase inhibitor in postmenopausal women with HER2-positive, hormone receptor-positive metastatic breast cancer: ALTERNATIVE. *J. Clin. Oncol.* **36**, 741–748 (2018).
62. Miller, V. A. *et al.* Afatinib versus placebo for patients with advanced, metastatic non-small-cell lung cancer after failure of erlotinib, gefitinib, or both, and one or two lines of chemotherapy (LUX-Lung 1): a phase 2b/3 randomised trial. *Lancet Oncol.* **13**, 528–538 (2012).
63. Chien, A. J. *et al.* Phase I dose-escalation study of 5-day intermittent oral lapatinib therapy in patients with human epidermal growth factor receptor 2-overexpressing breast cancer. *J. Clin. Oncol.* **32**, 1472–1479 (2014).
64. Tykerb (Lapatinib): https://www.hcp.novartis.com/products/tykerb/?site=43700040598463281&source=01030&gclid=EAJalQobChMIupDgsum-4AIVEY3ICh1I2QZLEAAAYASAAEgKtDvD_BwE&gclid=aw.ds (last seen: September 11, 2020).
65. ACPA. American Chronic Pain Association: Quality of life scale—a measure of function for people with pain. https://www.theacpa.org/wp-content/uploads/2017/08/Life_Scale_3.pdf. (2017).
66. Schwarzer, G., Carpenter, J. R. & Rücker, G. *Meta-analysis with R* (Springer, Berlin, 2015).
67. Whiting, P. *et al.* ROBIS: a new tool to assess risk of bias in systematic reviews was developed. *J. Clin. Epidemiol.* **69**, 225–234 (2016).

Acknowledgements

This work was supported in part by the funding of the Molecular Modeling and Biopharmaceutical Center (MMBC) at the University of Kentucky College of Pharmacy, the National Institutes of Health (NIH Grant P20 GM130456), and the National Science Foundation (NSF Grant CHE-1111761). The authors also acknowledge the Computer Center at the University of Kentucky for supercomputing time on a Dell Supercomputer Cluster consisting of 388 nodes or 4816 processors.

Author contributions

S.Z. performed the clinical data mining and prepared the figures and tables. F.Z. and C.-G.Z. designed the study and analyzed the data. All authors contributed to the writing, with C.G.-Z. finalizing the manuscript.

Competing interests

The authors declare no competing interests.

Additional information

Supplementary Information The online version contains supplementary material available at <https://doi.org/10.1038/s41598-021-82318-w>.

Correspondence and requests for materials should be addressed to F.Z. or C.-G.Z.

Reprints and permissions information is available at www.nature.com/reprints.

Publisher's note Springer Nature remains neutral with regard to jurisdictional claims in published maps and institutional affiliations.



Open Access This article is licensed under a Creative Commons Attribution 4.0 International License, which permits use, sharing, adaptation, distribution and reproduction in any medium or format, as long as you give appropriate credit to the original author(s) and the source, provide a link to the Creative Commons licence, and indicate if changes were made. The images or other third party material in this article are included in the article's Creative Commons licence, unless indicated otherwise in a credit line to the material. If material is not included in the article's Creative Commons licence and your intended use is not permitted by statutory regulation or exceeds the permitted use, you will need to obtain permission directly from the copyright holder. To view a copy of this licence, visit <http://creativecommons.org/licenses/by/4.0/>.

© The Author(s) 2021