

University of Kentucky

UKnowledge

Epidemiology and Environmental Health Faculty
Publications

Epidemiology and Environmental Health

12-12-2016

DNA Methylation Signatures of Chronic Low-Grade Inflammation Are Associated with Complex Diseases

Symen Ligthart

Erasmus University, Netherlands

Carola Marzi

German Research Center for Environmental Health, Germany

Stella Aslibekyan

University of Alabama - Birmingham

Michael M. Mendelson

Boston University

Follow this and additional works at: https://uknowledge.uky.edu/epidemiology_facpub

Karen N. Conneely



Part of the [Cardiology Commons](#), [Cardiovascular Diseases Commons](#), [Epidemiology Commons](#), [Genetics Commons](#), and the [Gerontology Commons](#)

[Right click to open a feedback form in a new tab to let us know how this document benefits you.](#)

See next page for additional authors

Repository Citation

Ligthart, Symen; Marzi, Carola; Aslibekyan, Stella; Mendelson, Michael M.; Conneely, Karen N.; Tanaka, Toshiko; Colicino, Elena; Waite, Lindsay L.; Joehanes, Roby; Guan, Weihua; Brody, Jennifer A.; Elks, Cathy; Marioni, Riccardo; Jhun, Min A.; Agha, Golareh; Bressler, Jan; Ward-Caviness, Cavin K.; Chen, Brian H.; Huan, Tianxiao; Bakulski, Kelly; Salfati, Elias L.; WHI-EMPC Investigators; Fiorito, Giovanni; CHARGE epigenetics of Coronary Heart Disease; Wahl, Simone; Schramm, Katharina; Sha, Jin; Hernandez, Dena G.; Just, Allan C.; Smith, Jennifer A.; and Arnett, Donna K., "DNA Methylation Signatures of Chronic Low-Grade Inflammation Are Associated with Complex Diseases" (2016). *Epidemiology and Environmental Health Faculty Publications*. 16.

https://uknowledge.uky.edu/epidemiology_facpub/16

This Article is brought to you for free and open access by the Epidemiology and Environmental Health at UKnowledge. It has been accepted for inclusion in Epidemiology and Environmental Health Faculty Publications by an authorized administrator of UKnowledge. For more information, please contact UKnowledge@lsv.uky.edu.

DNA Methylation Signatures of Chronic Low-Grade Inflammation Are Associated with Complex Diseases

Digital Object Identifier (DOI)

<https://doi.org/10.1186/s13059-016-1119-5>

Notes/Citation Information

Published in *Genome Biology*, v. 17, 255, p. 1-15.

© The Author(s). 2016

This article is distributed under the terms of the Creative Commons Attribution 4.0 International License (<http://creativecommons.org/licenses/by/4.0/>), which permits unrestricted use, distribution, and reproduction in any medium, provided you give appropriate credit to the original author(s) and the source, provide a link to the Creative Commons license, and indicate if changes were made. The Creative Commons Public Domain Dedication waiver (<http://creativecommons.org/publicdomain/zero/1.0/>) applies to the data made available in this article, unless otherwise stated.

Due to the large number of funding sources, only the first few are listed in this section. For the complete list of funding sources, please download this article.

Authors

Symen Ligthart, Carola Marzi, Stella Aslibekyan, Michael M. Mendelson, Karen N. Conneely, Toshiko Tanaka, Elena Colicino, Lindsay L. Waite, Roby Joehanes, Weihua Guan, Jennifer A. Brody, Cathy Elks, Riccardo Marioni, Min A. Jhun, Golareh Agha, Jan Bressler, Cavin K. Ward-Caviness, Brian H. Chen, Tianxiao Huan, Kelly Bakulski, Elias L. Salfati, WHI-EMPC Investigators, Giovanni Fiorito, CHARGE epigenetics of Coronary Heart Disease, Simone Wahl, Katharina Schramm, Jin Sha, Dena G. Hernandez, Allan C. Just, Jennifer A. Smith, and Donna K. Arnett

METHOD

Open Access



DNA methylation signatures of chronic low-grade inflammation are associated with complex diseases

Symen Ligthart^{1†}, Carola Marzi^{2,3†}, Stella Aslibekyan^{4†}, Michael M. Mendelson^{5,6,7†}, Karen N. Conneely⁸, Toshiko Tanaka⁹, Elena Colicino¹⁰, Lindsay L. Waite¹¹, Roby Joehanes¹², Weihua Guan¹³, Jennifer A. Brody¹⁴, Cathy Elks¹⁵, Riccardo Marioni^{16,17,18}, Min A. Jhun¹⁹, Golareh Agha¹⁰, Jan Bressler²⁰, Cavin K. Ward-Caviness²¹, Brian H. Chen²², Tianxiao Huan⁷, Kelly Bakulski²³, Elias L. Salfati²⁴, WHI-EMPC Investigators, Giovanni Fiorito^{25,26}, CHARGE epigenetics of Coronary Heart Disease, Simone Wahl^{2,3}, Katharina Schramm^{27,28}, Jin Sha⁴, Dena G. Hernandez²⁹, Allan C. Just¹⁰, Jennifer A. Smith¹⁹, Nona Sotoodehnia¹⁴, Luke C. Pilling³⁰, James S. Pankow³¹, Phil S. Tsao^{32,33}, Chunyu Liu^{7,34}, Wei Zhao¹⁹, Simonetta Guarrera^{25,26}, Vasiliki J. Michopoulos³⁵, Alicia K. Smith³⁵, Marjolein J. Peters³⁶, David Melzer³⁰, Pantel Vokonas³⁷, Myriam Fornage²⁰, Holger Prokisch^{27,28}, Joshua C. Bis¹⁴, Audrey Y. Chu⁷, Christian Herder^{38,39}, Harald Grallert^{2,3}, Chen Yao⁷, Sonia Shah^{18,40}, Allan F. McRae^{18,40}, Honghuang Lin³⁴, Steve Horvath⁴¹, Daniele Fallin²³, Albert Hofman^{1,42}, Nicholas J. Wareham¹⁵, Kerri L. Wiggins¹⁴, Andrew P. Feinberg²³, John M. Starr^{16,17}, Peter M. Visscher^{16,18,40}, Joanne M. Murabito⁵, Sharon L. R. Kardia¹⁹, Devin M. Absher¹¹, Elisabeth B. Binder^{35,43}, Andrew B. Singleton²⁹, Stefania Bandinelli⁴⁴, Annette Peters²¹, Melanie Waldenberger², Giuseppe Matullo^{25,26}, Joel D. Schwartz⁴⁵, Ellen W. Demerath³¹, André G. Uitterlinden³⁶, Joyce B. J. van Meurs³⁶, Oscar H. Franco¹, Yii-Der Ida Chen⁴⁶, Daniel Levy^{5,7}, Stephen T. Turner⁴⁷, Ian J. Deary^{16,17}, Kerry J. Ressler^{35,48,49}, Josée Dupuis³⁴, Luigi Ferrucci⁹, Ken K. Ong¹⁵, Themistocles L. Assimes⁵⁰, Eric Boerwinkle²⁰, Wolfgang Koenig^{51,52,53}, Donna K. Arnett⁵⁴, Andrea A. Baccarelli¹⁰, Emelia J. Benjamin^{5,55,56} and Abbas Dehghan^{1,57*}

Abstract

Background: Chronic low-grade inflammation reflects a subclinical immune response implicated in the pathogenesis of complex diseases. Identifying genetic loci where DNA methylation is associated with chronic low-grade inflammation may reveal novel pathways or therapeutic targets for inflammation.

(Continued on next page)

* Correspondence: a.dehghan@erasmusmc.nl; a.dehghan@imperial.ac.uk

†Equal contributors

¹Department of Epidemiology, Erasmus University Medical Center, Rotterdam, The Netherlands

⁵⁷Department of Biostatistics and Epidemiology, MRC-PHE Centre for Environment and Health, School of Public Health, Imperial College London, London, UK

Full list of author information is available at the end of the article



(Continued from previous page)

Results: We performed a meta-analysis of epigenome-wide association studies (EWAS) of serum C-reactive protein (CRP), which is a sensitive marker of low-grade inflammation, in a large European population ($n = 8863$) and trans-ethnic replication in African Americans ($n = 4111$). We found differential methylation at 218 CpG sites to be associated with CRP ($P < 1.15 \times 10^{-7}$) in the discovery panel of European ancestry and replicated ($P < 2.29 \times 10^{-4}$) 58 CpG sites (45 unique loci) among African Americans. To further characterize the molecular and clinical relevance of the findings, we examined the association with gene expression, genetic sequence variants, and clinical outcomes. DNA methylation at nine (16%) CpG sites was associated with whole blood gene expression in cis ($P < 8.47 \times 10^{-5}$), ten (17%) CpG sites were associated with a nearby genetic variant ($P < 2.50 \times 10^{-3}$), and 51 (88%) were also associated with at least one related cardiometabolic entity ($P < 9.58 \times 10^{-5}$). An additive weighted score of replicated CpG sites accounted for up to 6% inter-individual variation (R^2) of age-adjusted and sex-adjusted CRP, independent of known CRP-related genetic variants.

Conclusion: We have completed an EWAS of chronic low-grade inflammation and identified many novel genetic loci underlying inflammation that may serve as targets for the development of novel therapeutic interventions for inflammation.

Keywords: Inflammation, DNA methylation, Epigenome-wide association study, C-reactive protein, Body mass index, Diabetes, Coronary heart disease

Background

Chronic low-grade inflammation is a complex immune response that plays an important role in the pathogenesis of multiple chronic diseases, including diabetes and cardiovascular disease [1, 2]. C-reactive protein (CRP) is a sensitive marker of chronic low-grade inflammation in community-dwelling adults [3] and is associated in population-based studies with an increased risk of incident coronary heart disease (CHD), stroke, and non-vascular mortality [4]. Several pathways have been identified for chronic low-grade inflammation [1, 5] and genetic studies have found candidate loci through discovery of genetic sequence determinants of circulating CRP levels [6]. However, most of the molecular mechanisms underlying inter-individual variation in inflammation in the general population and the inter-relation with complex diseases remain to be elucidated.

Epigenetic modifications comprise biochemical alterations to the genome that leave the underlying nucleic acid sequence unchanged but can affect phenotypic expression. DNA methylation is a pivotal and stable epigenetic mechanism whereby a methyl group is attached to the DNA sequence, most often a cytosine nucleotide that neighbors a guanine nucleotide. DNA methylation is affected by both genetic and environmental factors and regulates gene expression and chromosome stability [7]. Investigating DNA methylation in chronic low-grade inflammation may point to functional epigenetic changes that occur in the context of inflammation.

We performed the first meta-analysis of epigenome-wide association studies (EWAS) of methylation of DNA on chronic low-grade inflammation using CRP as a sensitive inflammatory biomarker (Fig. 1). We first

conducted a discovery meta-analysis, comprising 8863 participants of European ancestry. Since race or ethnicity may affect epigenetic associations [8], we conducted trans-ethnic replication in 4111 individuals of African-American ancestry. We further investigated the association between replicated DNA methylation sites and both *cis*- gene expression and genetic variants. Finally, differentially methylated CpG sites were examined for association with cardiometabolic phenotypes to study potential epigenetic links between inflammation and cardiometabolic diseases.

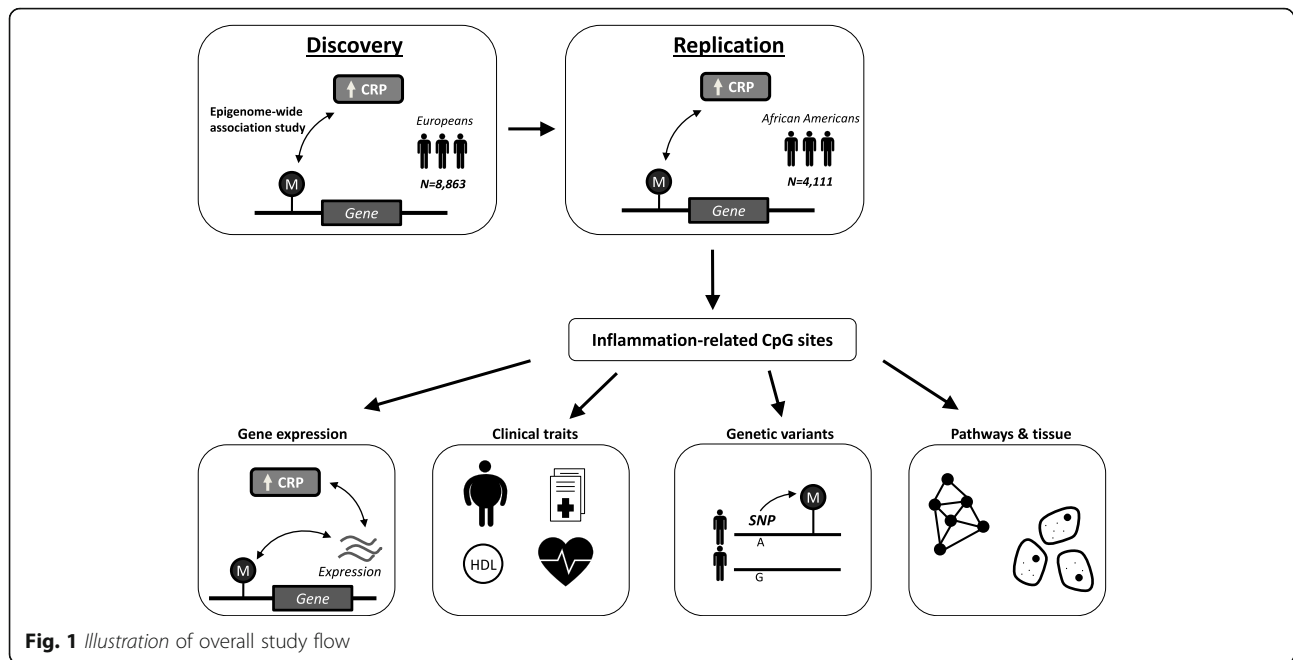
Results

Clinical characteristics

The nine participating discovery ($n = 8863$) and four replication cohorts ($n = 4111$) and the clinical characteristics of the participants are presented in Table 1 (further details, Additional file 1: Table S1). The mean age in the participating studies ranged from 41 years in the Grady Trauma Project (GTP) cohort to 87 years in Lothian Birth Cohort (LBC) 1921. The majority (54%) of the samples were from women. Some of the cohorts differed based on selection criteria for entry into the study. The Normative Aging Study (NAS) only included men, while the Women's Health Initiative (WHI) only included women. Mean serum CRP levels (SD) ranged from 2.3 (3.7) mg/L in the Kooperative Gesundheitsforschung in der Region Augsburg (KORA) study to 7.2 (8.4) mg/L in the African-American CHD cases of WHI.

Discovery meta-analysis

We identified 218 CpG sites significantly associated ($P < 1.15 \times 10^{-7}$) with CRP in the meta-analysis of European participants, adjusted for age, sex, white blood cell

**Table 1** Characteristics of the discovery ($n = 8863$) and replication ($n = 4111$) studies

Study	n	Country	Age (years)	Women (%)	CRP (mg/L)	BMI (kg/m ²)
Discovery (European)						
CHS	187	USA	76 (5)	56	6.6 (11.0)	31 (6)
EPIC-Norfolk	1287	UK	60 (9)	54	3.3 (5.4)	27 (4)
FHS	2427	USA	66 (9)	52	3.1 (6.7)	28 (5)
InCHIANTI	498	Italy	63 (16)	55	3.2 (3.5)	27 (4)
KORA	1700	Germany	61 (9)	51	2.3 (3.7)	28 (5)
LBC 1921	169	UK	87 (0)	54	3.7 (8.4)	26 (4)
LBC 1936	296	UK	70 (1)	50	5.3 (6.8)	28 (4)
NAS	648	USA	73 (7)	0	3.3 (6.1)	28 (4)
Rotterdam	702	Netherlands	60 (8)	54	2.7 (4.7)	28 (5)
WHI controls	471	USA	68 (6)	100	3.8 (5.5)	28 (6)
WHI cases	478	USA	69 (6)	100	4.9 (6.4)	29 (6)
Replication (African American)						
ARIC	2264	USA	56 (6)	64	5.9 (7.8)	30 (6)
CHS	193	USA	73 (5)	65	5.2 (5.6)	29 (5)
GENOA	939	USA	66 (8)	71	6.7 (12.3)	31 (6)
GTP	112	USA	41 (13)	70	5.9 (8.1)	33 (8)
WHI controls	309	USA	62 (6)	100	6.1 (7.5)	31 (7)
WHI cases	294	USA	64 (7)	100	7.2 (8.4)	32 (6)

Characteristics are mean (SD), unless otherwise specified

ARIC Atherosclerosis Risk in Communities, BMI body mass index, CHS Cardiovascular Health Study, CRP C-reactive protein, EPIC-Norfolk European Prospective Investigation into Cancer and Nutrition Norfolk, FHS Framingham Heart Study, GENOA Genetic Epidemiology Network of Arteriopathy, InCHIANTI Invecchiare in Chianti, KORA Kooperative Gesundheitsforschung in der Region Augsburg, LBC Lothian Birth Cohort, NAS Normative Aging Study, UK United Kingdom, USA United States of America, WHI Women's Health Initiative

proportions, technical covariates, smoking, and body mass index (BMI) (Manhattan and QQ-plot, Fig. 2, Additional file 2: Table S2, and Additional file 3: Table S3). Serum CRP was positively associated with 125 CpG sites and negatively associated with 93. The top CpG site was cg10636246 at 1q23.1 located within 1500 bp of the transcription start site of *Absent in melanoma 2* (*AIM2*) (effect size = -0.0069 , $P = 2.53 \times 10^{-27}$), an interferon-gamma-induced protein involved in the innate immune response by inducing caspase-1-activating inflammatory formation in macrophages.

Replication meta-analysis

Of the 218 CpG sites significantly associated with CRP in our discovery meta-analysis, 58 replicated ($P < 2.29 \times 10^{-4}$) in a trans-ethnic replication meta-analysis of 4111 individuals of African-American ancestry (Table 2). The replicated CpG sites annotated to 45 separate loci. The most significant CpG site in the discovery panel (cg10636246; *AIM2*) was also strongly related to serum CRP in individuals of African-American ancestry (effect size = -0.0081 , $P = 6.31 \times 10^{-9}$). Effect estimates of the 58 replicated CpG sites assessed in the European and African-American panel were highly correlated ($r = 0.97$). Cochran's Q statistics displayed homogeneity for $> 95\%$ of the 58 replicated loci in both the European discovery panel and the African-American replication panel (study specific effect estimates, Additional file 4). In addition, we conducted a meta-analysis combining the European and African-American whole blood samples resulting in 258 significant CpGs (Additional file 5).

Sensitivity analyses

Further adjustment of the replicated CpG sites for additional potential confounders (waist circumference, total/HDL-cholesterol ratio, prevalent diabetes, hypertension treatment, lipid treatment, hormone replacement therapy, and prevalent CHD) did not substantially change the effect estimates and P values. Additional file 6: Figure S3 depicts the correlation between the effect estimates and $-\log_{10} P$ values in the primary model compared to the multivariable adjusted model, respectively. Furthermore, 18 CpGs were found to be associated with serum CRP levels in CD4+ cells in the GOLDN study ($P < 0.05$) (Additional file 7: Table S6).

Methylation and genetic scores

Additive weighted methylation and genetic scores were constructed to calculate percentage of total CRP variance explained. A methylation score including eight independent CpGs (cg10636246, cg17501210, cg18608055, cg03957124, cg04987734, cg04523589, cg17980786, and cg02341197) explained 5.8% of the variance of CRP in Atherosclerosis Risk in Communities (ARIC), 2.3% in

KORA, 5.0% in NAS, and 4.6% in RS. A genetic score including 18 independent CRP single nucleotide polymorphisms (SNPs) explained 4.9% of the CRP variance in RS and the methylation and genetic scores together explained 9.0%. Notably, no significant interaction or association was observed between the genetic and methylation scores, suggesting that they independently explain variance in CRP.

Association with cardiometabolic phenotypes

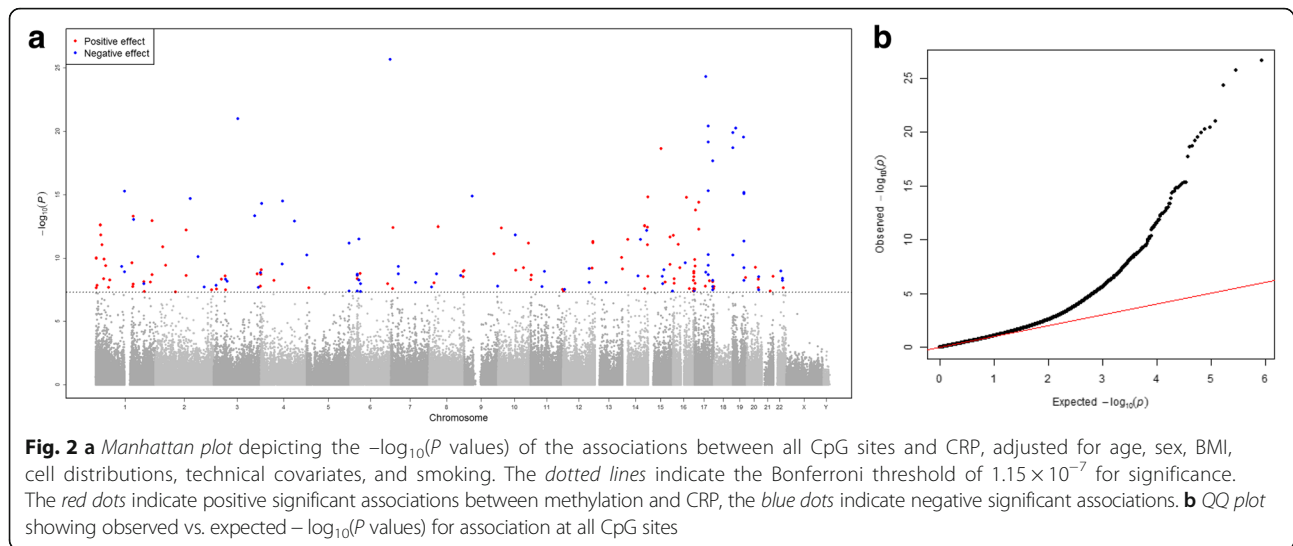
We examined the associations between the 58 replicated CRP-related CpG sites and nine cardiometabolic traits and diseases (BMI, lipids, glycemic phenotypes, prevalent CHD, and incident CHD). After Bonferroni correction for multiple testing based on 58 CpG sites and nine phenotypes ($P < 0.05/522 = 9.58 \times 10^{-5}$), we observed 89 significant associations with 51 unique CpG sites (Additional file 8: Table S7). There was major overlap with BMI (46 CpGs). CpGs that were significantly associated with higher BMI, fasting glucose, fasting insulin, risk of diabetes, triglycerides, and risk of CHD were also associated with higher CRP levels. For HDL-cholesterol and total cholesterol, CpGs were associated with lower CRP levels (Fig. 3).

Gene expression analyses

Of the 58 replicated CpG sites, nine (16%) were significantly associated with expression of nine unique genes in *cis* ($P < 8.47 \times 10^{-5}$) (Additional file 9: Table S8). Furthermore, of those nine genes, the expression levels of four genes were associated with serum CRP levels ($P < 0.05$). In these four cases, we could show corresponding triangular relationships between DNA methylation, gene expression, and serum CRP levels. For example, increased methylation at cg10636246 was associated with lower serum CRP levels and lower expression of *AIM2* and lower expression of *AIM2* was associated with lower CRP levels (Fig. 4).

Genetic correlates of DNA methylation in cis

In the RS, we identified 20 *cis*-mQTL pairs (19 unique SNPs and 20 unique CpG sites) for the replicated CpG sites, ten of these *cis*-mQTL pairs could be replicated in the Framingham Heart Study (FHS) ($P < 2.5 \times 10^{-3}$) (Additional file 10: Table S9). For example, the strongest correlation was observed between rs12677618 and cg25392060 (located 4903 bp away from each other; $\beta = -0.011$; $P = 2.73 \times 10^{-126}$). None of the ten replicated *cis*-mQTL variants was significantly associated with serum CRP levels after Bonferroni correction for multiple testing ($P > 0.005$) in the largest published genome-wide association study (GWAS) to date of 66,185 individuals [6].



GWAS catalog, pathway analysis, and tissue enrichment

The 58 CpG sites were annotated to 47 genes, which are associated in GWAS with 18 phenotypes (Additional file 11: Table S10). We found enrichment in GWAS of epilepsy, renal cell carcinoma, and lipoprotein-associated phospholipase A2 (Lp-PLA2) activity and mass.

Pathway enrichment analyses were carried out in 47 unique genes that were annotated to the 58 replicated CpG sites in the Ingenuity Pathway Analysis (IPA) database. The top pathways included growth hormone signaling, IL-9 signaling, atherosclerosis, and IL-6 signaling (Additional file 12: Table S11).

Analysis of tissue specific DNase I hotspots yielded enrichment predominantly in epithelium, blood vessels, and various blood cells (especially CD14+ macrophages) (Additional file 6: Table S4).

Discussion

This meta-analysis of EWAS of CRP, a sensitive marker of chronic low-grade inflammation, identified and validated 58 CpG sites in or near 45 unique loci in leukocytes of individuals of European and African descent. The associations were robust to adjustment for potential confounders and explained more than 6% of the variation in circulating CRP concentrations. We demonstrated that several inflammation-related CpG sites were associated with expression of nearby genes and many CpG sites showed pleiotropic associations with cardiometabolic phenotypes as well as the clinical disease CHD.

DNA methylation may differ by race or ethnicity [8], challenging replication across individuals of varying descent in epigenetic studies. We were able to replicate up to 27% of our findings with comparable effect estimates, demonstrating that our results are generalizable across Europeans and African Americans. The trans-ethnic

replication approach of our study strengthens the confidence of true-positive findings and supports the notion that despite differing baseline epigenetic profiles, different ethnicities may have consistent epigenetic associations with respect to inflammation.

Increased DNA methylation at the top signal cg10636246 near *AIM2* was associated with lower expression of *AIM2* and lower CRP levels. In agreement, lower *AIM2* expression was associated with lower serum CRP levels. As an inflammasome receptor for double-stranded DNA activating inflammatory cascades, *AIM2* is implicated in host defense mechanisms against bacterial and viral pathogens and thus is key in the human innate immune response [9, 10]. The data suggest that methylation near *AIM2* plays a role in low-grade inflammation in the general population. Nevertheless, the results from the current study do not infer causal directionality.

Several of our hits were associated with future clinical events. For example, three inflammation-related CpG sites were also associated with incident CHD. Hypomethylation at cg18181703 (*SOCS3*), cg06126421 (*TUBB*), and cg05575921 (*AHRR*) were associated with higher CRP levels and increased risk of future CHD. The gene product of *SOCS3*, suppressor of cytokine signaling 3, plays a pivotal role in the innate immune system as a regulator of cytokine signaling [11]. The role of *SOCS3* in atherosclerosis has been established [12]. We observed that lower DNA methylation was associated with increased expression of *SOCS3* and increased serum CRP. Differential methylation at the *AHRR* loci has been robustly demonstrated to be associated with cigarette smoking [13]. The association of *AHRR* methylation with CRP and incident CHD may highlight a connection between CRP and cardiovascular disease that is shared between cigarette smoking and independent mechanisms.

Table 2 DNA methylation sites associated with serum CRP levels

CpG sites	Chr	Position	Effect size EA	P value EA	Effect size AA	P value AA	Gene
cg10636246	1	159046973	-0.0069	2.53×10^{-27}	-0.0081	6.31×10^{-09}	<i>AIM2</i>
cg17501210	6	166970252	-0.0065	2.06×10^{-26}	-0.0076	9.45×10^{-05}	<i>RPS6KA2</i>
cg02650017	17	47301614	-0.0021	4.87×10^{-25}	-0.0011	7.71×10^{-06}	<i>PHOSPHO1</i>
cg12992827	3	101901234	-0.0057	9.73×10^{-22}	-0.0086	4.42×10^{-14}	<i>NFKBIZ</i>
cg16936953	17	57915665	-0.0077	3.74×10^{-21}	-0.0125	1.13×10^{-13}	<i>TMEM49</i>
cg19821297	19	12890029	-0.0051	5.19×10^{-21}	-0.0055	6.58×10^{-06}	<i>GCDH</i>
cg07573872	19	1126342	-0.0052	1.24×10^{-20}	-0.0068	2.98×10^{-09}	<i>SBNO2</i>
cg26470501	19	45252955	-0.0045	2.85×10^{-20}	-0.0051	4.08×10^{-07}	<i>BCL3</i>
cg12054453	17	57915717	-0.0082	6.96×10^{-20}	-0.0117	4.25×10^{-12}	<i>TMEM49</i>
cg18608055	19	1130866	-0.0043	1.94×10^{-19}	-0.0078	2.96×10^{-11}	<i>SBNO2</i>
cg06192883	15	52554171	0.0045	2.29×10^{-19}	0.0073	8.29×10^{-12}	<i>MYO5C</i>
cg18181703	17	76354621	-0.0053	2.13×10^{-18}	-0.0091	7.08×10^{-13}	<i>SOCS3</i>
cg18942579	17	57915773	-0.0056	4.77×10^{-16}	-0.0098	8.70×10^{-12}	<i>TMEM49</i>
cg19769147	14	105860954	0.0029	1.51×10^{-15}	0.0029	6.60×10^{-05}	<i>PACS2</i>
cg20995564	2	145172035	-0.0051	2.04×10^{-15}	-0.0089	2.69×10^{-10}	<i>ZEB2</i>
cg02734358	4	90227074	-0.0048	3.09×10^{-15}	-0.0051	5.51×10^{-05}	<i>GPRIN3</i>
cg07094298	4	2748026	-0.0056	4.76×10^{-15}	-0.0058	5.32×10^{-06}	<i>TNIP2</i>
cg01059398	3	172235808	-0.0042	4.51×10^{-14}	-0.0068	2.27×10^{-05}	<i>TNFSF10</i>
cg06690548	4	139162808	-0.0048	1.21×10^{-13}	-0.0029	1.52×10^{-07}	<i>SLC7A11</i>
cg02003183	14	103415882	0.0047	3.59×10^{-13}	0.0051	4.36×10^{-05}	<i>CDC42BPB</i>
cg26804423	7	8201134	0.0027	3.87×10^{-13}	0.0038	4.82×10^{-07}	<i>ICA1</i>
cg13585930	10	72027357	-0.0037	1.42×10^{-12}	-0.0046	7.95×10^{-05}	<i>NPFFR1</i>
cg03957124	6	37016869	-0.0030	3.13×10^{-12}	-0.0039	1.39×10^{-05}	<i>FGD2</i>
cg12053291	12	125282342	0.0029	5.99×10^{-12}	0.0038	9.80×10^{-05}	<i>SCARB1</i>
cg02481950	16	21665002	0.0022	7.84×10^{-12}	0.0034	2.92×10^{-06}	<i>METTL9</i>
cg04987734	14	103415873	0.0041	8.40×10^{-12}	0.0051	1.40×10^{-04}	<i>CDC42BPB</i>
cg15551881	9	123688715	0.0039	4.62×10^{-11}	0.0049	3.99×10^{-07}	<i>TRAF1</i>
cg27023597	17	57918262	-0.0050	5.02×10^{-11}	-0.0070	5.96×10^{-06}	<i>MIR21</i>
cg05575921	5	373378	-0.0059	5.44×10^{-11}	-0.0063	1.17×10^{-04}	<i>AHRR</i>
cg27469606	19	1154485	-0.0020	5.62×10^{-11}	-0.0023	1.96×10^{-06}	<i>SBNO2</i>
cg01409343	17	57915740	-0.0037	3.56×10^{-10}	-0.0081	6.12×10^{-10}	<i>TMEM49</i>
cg21429551	7	30635762	-0.0069	4.42×10^{-10}	-0.0080	1.68×10^{-05}	<i>GARS</i>
cg23761815	10	73083123	0.0022	8.86×10^{-10}	0.0029	6.85×10^{-05}	<i>SLC29A3</i>
cg08548559	22	31686097	-0.0038	9.94×10^{-10}	-0.0049	9.88×10^{-05}	<i>PIK3IP1</i>
cg26610247	8	142297175	0.0029	1.07×10^{-09}	0.0041	4.59×10^{-06}	<i>TSNARE1</i>
cg27050612	17	46133198	-0.0019	1.30×10^{-09}	-0.0029	8.23×10^{-05}	<i>NFE2L1</i>
cg15721584	3	181326755	0.0055	1.71×10^{-09}	0.0072	1.14×10^{-05}	<i>SOX2OT</i>
cg06126421	6	30720080	-0.0052	1.80×10^{-09}	-0.0059	1.53×10^{-04}	<i>TUBB</i>
cg00851028	1	234905772	0.0023	1.95×10^{-09}	0.0042	1.46×10^{-05}	-
cg24174557	17	57903544	-0.0038	1.97×10^{-09}	-0.0051	1.65×10^{-04}	<i>TMEM49</i>
cg05316065	8	130799007	-0.0027	2.26×10^{-09}	-0.0051	2.28×10^{-07}	<i>GSDMC</i>
cg04523589	3	48265146	0.0022	2.49×10^{-09}	0.0031	4.47×10^{-05}	<i>CAMP</i>
cg17980786	3	32933637	0.0026	4.58×10^{-09}	0.0055	1.47×10^{-09}	<i>TRIM71</i>
cg25325512	6	37142220	-0.0031	5.31×10^{-09}	-0.0052	4.94×10^{-05}	<i>PIM1</i>

Table 2 DNA methylation sites associated with serum CRP levels (*Continued*)

cg00812761	4	53799391	0.0025	5.60×10^{-09}	0.0036	1.36×10^{-04}	SCFD2
cg27637521	17	76355202	-0.0016	5.69×10^{-09}	-0.0017	3.69×10^{-05}	SOCS3
cg26846781	17	61620942	0.0018	5.99×10^{-09}	0.0033	3.03×10^{-05}	KCNH6
cg00159243	12	109023799	-0.0026	8.22×10^{-09}	-0.0036	1.38×10^{-04}	SELPLG
cg15310871	8	20077936	0.0022	8.63×10^{-09}	0.0027	2.96×10^{-05}	ATP6V1B2
cg15020801	17	46022809	0.0024	1.67×10^{-08}	0.0033	9.47×10^{-05}	PNPO
cg03128029	2	203143288	-0.0027	1.90×10^{-08}	-0.0036	2.03×10^{-04}	NOP58
cg22749855	17	76353952	-0.0024	3.22×10^{-08}	-0.0035	5.15×10^{-05}	SOCS3
cg02341197	21	34185927	0.0030	3.92×10^{-08}	0.0045	2.54×10^{-05}	C21orf62
cg12269535	6	43142014	-0.0028	4.39×10^{-08}	-0.0046	1.57×10^{-04}	SRF
cg25392060	8	142297121	0.0025	5.60×10^{-08}	0.0036	2.15×10^{-04}	TSNARE1
cg27184903	15	29285727	0.0024	5.84×10^{-08}	0.0052	4.91×10^{-07}	APBA2
cg18663307	21	46341389	0.0029	6.98×10^{-08}	0.0048	1.04×10^{-04}	ITGB2
cg09182678	22	50328711	-0.0016	9.02×10^{-08}	-0.0019	1.26×10^{-04}	DENND6B

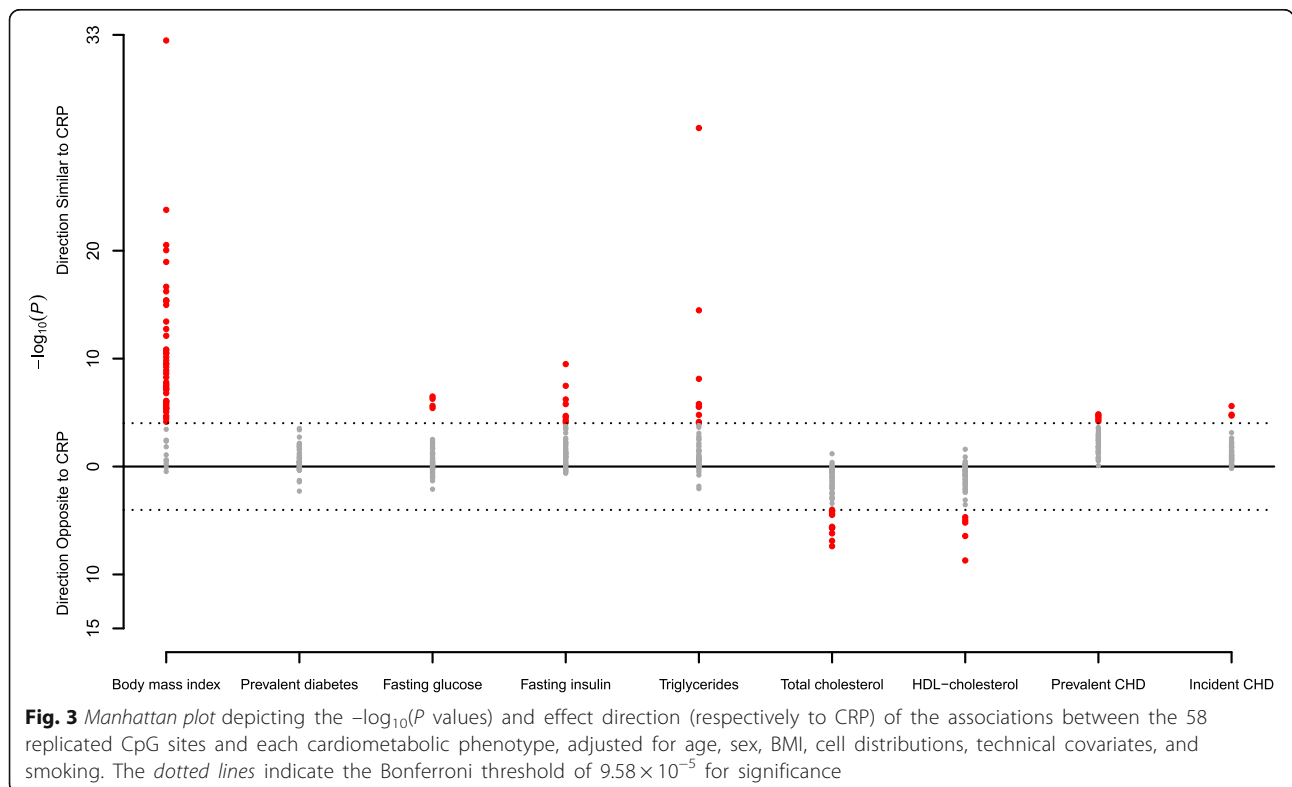
Effect sizes represent the changes in normalized DNA methylation Beta-values per 1-unit increase in natural log-transformed CRP (mg/L)

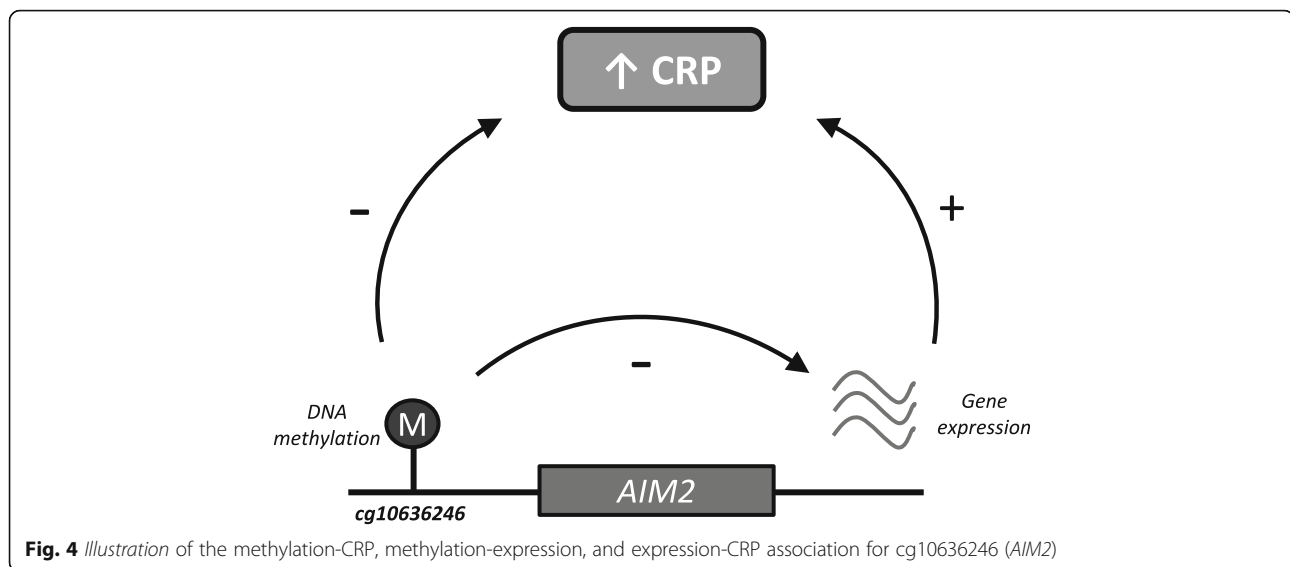
Chr and Position are in GRCh37/hg19

AA African American, EA European Ancestry

Furthermore, we found two CpG sites that have recently been identified in an EWAS of incident type 2 diabetes [14]. We hypothesize that inflammation-related epigenetic features may explain at least part of the observed associations between CRP, a sensitive marker of chronic low-grade inflammation, and related clinical events including CHD and diabetes.

Many replicated CpG sites demonstrated associations with cardiometabolic phenotypes, emphasizing the substantial epigenetic overlap with those phenotypes. Taken together, these pleiotropic epigenetic associations across various phenotypes may provide novel insights into shared epigenetic mechanisms and provide opportunities to link chronic low-grade inflammation and cardiometabolic





phenotypes. Our findings may help to focus on genomic regulation of pertinent loci that may be attractive targets for perturbation or therapeutic intervention.

CRP is affected by both genetic and environmental factors [15]. Although we may have slightly overestimated the variance explained since the testing cohorts participated in the discovery and replication meta-analysis, the CRP methylation score augmented the explained variance beyond that accounted for by the CRP genetic score. This suggests that the methylation score harbors information that may be independent from the genetic factors underlying CRP. In agreement with a previous report on the added value of a methylation score in explaining variance in BMI, we further add that methylation may explain further variation of complex traits that have substantial environmental components [16].

In the present study, we were able to present stringent triangular relationships between DNA methylation, gene expression, and serum CRP levels at four loci. However, firm conclusions regarding causal directionality are challenging in epigenetic studies. Although ten (17%) of the replicated methylation sites had *cis*-mQTLs, we were not able to detect a significant association between these mQTLs and CRP levels in the largest published CRP GWAS, which may be due to the limited power, or the findings represent methylation changes downstream of CRP. However, our findings were biologically plausible and consistent with previous observations. For example, GWAS enrichment analysis suggested enrichment in genes identified for renal cell carcinoma. CRP is commonly elevated in renal cell carcinoma patients [17]. Furthermore, pathway analyses identified regulatory mechanisms related to inflammatory processes such as STAT3 and IL-6 signaling pathway, the pro-inflammatory upstream regulator of serum CRP levels

[18]. Taken together, these results suggest that DNA methylation plays a role in establishing or maintaining CRP levels in the general population.

The major strengths of the present study are its large sample size and multi-ethnic nature, allowing a valid interpretation of results for both European and African-American populations. Furthermore, careful and comprehensive adjusting models reduced the chance of confounding. In addition, DNA methylation was quantified in whole blood, which is primarily composed of leukocytes, a key component of the human immune system and therefore highly relevant to systemic inflammation. The combination of epigenomics with genomics and transcriptomics data as well as enrichment analyses allowed the exploration of functional properties of our findings.

The study has limitations. The 450 K array captures approximately 2–4% of the total human DNA methylation, mainly in genic regions, thus limits the discovery of potentially important CpG sites that are not measured on the array. Furthermore, although we adjusted the analyses for measured or estimated cell type proportions, we cannot completely rule out the presence of residual confounding by white blood cell distributions. Residual confounding from differences in unmeasured cell count heterogeneity introduced by correlation between CRP and unknown cell subtypes may bias our results. Also, the annotation of CpGs and SNPs to genes is challenging in genomic studies. We annotated primarily based on distances, which may have incorrectly annotated genes. Further, we replicated our findings from the European discovery in African Americans. The differences in ethnicities and the African-American sample size may have limited replication of the findings. Our study was limited to blood samples and while this has been

demonstrated to be a good surrogate tissue [19], we would not be able to infer tissue specific methylation changes. Specifically, as CRP is synthesized in the liver, our current study design would not allow us to detect hepatic methylation changes. We did not observe associations with nearby gene expression for all CpGs we identified. However, the limited sample size for methylation-expression analyses, failure for expression probes to pass quality control, tissue-specificity, and long-distance effects may explain this observation. Furthermore, DNA methylation may also affect chromosome stability and alternative splicing, two functional consequences of DNA methylation which we have not investigated in the present study. Finally, we cannot exclude residual confounding and cannot determine causal directionality.

Conclusions

We performed the first meta-analysis of EWAS of CRP, a sensitive marker of low-grade inflammation. We identified 58 DNA methylation sites that are significantly associated with CRP levels in individuals of both European and African-American ancestry. Since inflammation is implicated in the development of multiple complex diseases, the discoveries from the current study may contribute to the identification of novel therapies and interventions for treatment of inflammation and its clinical consequences.

Methods

Discovery and replication study population

Our study was conducted within the framework of the Epigenetics working group of the Cohorts for Heart and Aging Research in Genomic Epidemiology (CHARGE) consortium [20]. The discovery study population comprised 8863 individuals from the following 11 cohort studies (listed in alphabetical order): the Cardiovascular Health Study (CHS), the European Prospective Investigation into Cancer and Nutrition (EPIC) Norfolk study, the FHS, the Invecchiare in Chianti study (InCHIANTI), the KORA study, the LBCs 1921 and 1936 (LBC1921/1936), the NAS, the Rotterdam Study (RS), and the WHI. All individuals in the discovery cohorts were of European descent. The trans-ethnic replication population consisted of 4111 African-American individuals from the ARIC study, the CHS, the Genetic Epidemiology Network of Arteriopathy (GENOA) study, the GTP, and the WHI. The studies are described in detail in Additional file 13: Supplemental methods. Individuals with autoimmune diseases (rheumatoid arthritis, lupus erythematosus, Crohn's disease, type 1 diabetes) and individuals receiving immune-modulating agents were excluded from all analyses, when disease status and medication data were available. Individuals without such

data were assumed to be disease-free and non-users. All participants gave written informed consent and protocols were approved by local institutional review boards and ethic committees.

C-reactive protein measurements

Serum CRP was measured in mg/L using high-sensitivity assays in all studies except the LBCs, in which CRP was measured with the use of a normal sensitivity assay. CRP was measured in blood samples drawn at the same time and center visit as blood was drawn for DNA methylation quantification. CRP values were natural log-transformed ($\ln\text{CRP}$). Study-specific methods on the quantification of CRP are described in Additional file 13: Supplemental methods. Distributions of the natural log-transformed serum CRP levels per study are depicted in Additional file 6: Figure S1.

DNA methylation quantification

For the quantification of the DNA methylation, DNA was extracted from whole blood in all studies. All studies used the Illumina Infinium Human Methylation450K BeadChip (Illumina Inc, San Diego, CA, USA) for DNA methylation measurement except GENOA, which used the Illumina Infinium HumanMethylation27K BeadChip (Illumina Inc, San Diego, CA, USA). The 450 K Beadchip assays methylation of >480,000 CpGs and is enriched for gene regions and covers 99% of all genes. DNA methylation data pre-processing was conducted independently in different studies and β values were normalized using study-specific methods. We used methylation β values to represent the proportion of the total signal intensity, which is in the range of 0–1. Further study-specific methods and filtering criteria can be found in Additional file 13: Supplemental methods and Additional file 2: Table S2. A CpG site was deemed polymorphic when a SNP in the 1000 Genomes Project (Phase 1) with a minor allele frequency ≥ 0.01 resided at the position of the cytosine or guanine on either strand, or within 10 bp from the CpG within the probe binding site [8]. Polymorphic CpG sites were excluded from all analyses. Also, cross-reactive probes were excluded from all analyses [21]. In total, 434,253 probes were available for analysis.

Epigenome-wide association study

The EWAS was performed at each center separately. Individuals with CRP values > 4 standard deviations (SD) from the respective cohort mean $\ln\text{CRP}$ were excluded from all analyses. In the primary model, we used linear mixed effect regression models to study the methylation β -values, specified as the dependent variable, as a function of $\ln\text{CRP}$ adjusting for age, sex, white blood cell proportions, technical covariates (array number and

position on array), smoking (current, former and never), and BMI. Technical covariates were modeled as random effects. Measured or estimated (Houseman method implemented in the *minfi* package in R [22, 23]) leukocyte proportions were included to account for cell type admixture (Additional file 2: Table S2). When applicable, models were additionally adjusted for study specific covariates such as study site (fixed effect) and family structure (random effect). Regression models and adjustments were comparable in the discovery and replication analyses. The effect size represents the change in DNA methylation per 1-unit increase in lnCRP.

Meta-analysis

Fixed effects meta-analyses were conducted using the inverse-variance weighted method implemented in METAL, corrected for double lambda control (individual studies and meta-analysis) [24]. In the discovery phase, a Bonferroni correction was applied to correct for multiple testing with a significance threshold of $0.05/434,253 = 1.15 \times 10^{-7}$. We then examined the significant CpG sites for trans-ethnic replication in 4111 individuals of African-American ancestry using a Bonferroni-corrected significance threshold for the number of CpG sites taken forward for replication. Between-study heterogeneity was examined with Cochran's Q statistic with a Bonferroni-corrected significance threshold for the number of replicated CpG sites. We performed a power calculation for the replication analysis using the GPower 3.1 tool (Additional file 6: Figure S2) [25]. Additionally, the European and African-American samples were combined in one meta-analysis.

Sensitivity analyses

In a subset of the discovery cohorts that had further confounders available (CHS, FHS, InCHIANTI, KORA, NAS, RS, and WHI), the replicated CpG sites were additionally adjusted for other potential confounders. These covariates were selected based on strong associations with CRP in observational research [15]. In addition to the variables of the primary model, the sensitivity model included waist circumference, total/high-density lipoprotein (HDL)-cholesterol ratio, prevalent diabetes (defined as fasting glucose ≥ 7.0 mmol/L, non-fasting glucose ≥ 11.1 mmol/L, or the use of diabetes medication), hypertension treatment (use of diuretics, anti-adrenergic agents, β -blockers, calcium channel blockers, and RAAS inhibitors), lipid treatment (use of statins, ezetimibe, and colestyramine), hormone replacement therapy, and prevalent CHD. Since the population for analysis in the second model was expected to be slightly smaller compared to the primary model due to missing data for certain covariates, we repeated the primary model to include only individuals present in the second model.

To investigate the association between the replicated CpG sites and serum CRP levels in CD4+ cells, we tested the association in the Genetics of Lipid Lowering Drugs and Diet Network (GOLDN) study which quantified DNA methylation in CD4+ cells. Associations with a consistent effect direction and $P < 0.05$ were considered significant.

Annotation of CpG sites

We used the genome coordinates provided by Illumina (GRCh37/hg19) to identify independent loci. A distance criterion of 500 kb on either side of each epigenome-wide significant signal was used to define independent loci. In addition to the gene annotation provided by Illumina based on RefSeq database, the UCSC database was explored to further annotate the CpG sites to potential genes (nearest gene).

Methylation and genetic score

To calculate the variance explained by the replicated CpGs, we first selected independent CpGs based on pairwise Pearson correlation R^2 . To this end, we first ranked the significant CpGs by discovery P value in ascending order. We then iteratively excluded CpGs correlated with the top CpG site ($r^2 > 0.1$) until we reached a list of independent CpGs ($n = 8$). The eight CpGs were used to construct a methylation score weighted by the effect estimates from regression in the FHS with lnCRP as the dependent variable and residuals of the DNA methylation (after regressing out age, sex, batch effect, cell counts, smoking, and BMI) as the independent variable. Using a linear regression model, we calculated the CRP variance explained by the methylation score (multiple R^2 , adjusting for age and sex) in ARIC, KORA, NAS, and RS. Furthermore, an additive effect-size weighted genetic score for CRP was constructed in RS to include 18 SNPs identified in the largest GWAS of CRP (genotyping information RS in Additional file 13: Supplemental methods) [6]. We calculated weighted dosages by multiplying the dosage of each risk allele (0, 1, or 2) with the published effect estimate. We calculated the CRP variance explained by the genetic score and both the methylation and genetic score combined [6]. Additionally, the interaction between the methylation and genetic score on CRP was studied using a multiplicative interaction term. Finally, we assessed the association between the genetic and methylation scores.

Association with cardiometabolic phenotypes

The association between the significant CpGs and BMI, total cholesterol, HDL-cholesterol, triglycerides, fasting glucose, fasting insulin, prevalent diabetes, prevalent CHD, and incident CHD was explored in CHS, FHS, InCHIANTI, KORA, NAS, RS, and WHI. The analyses

on fasting glucose and fasting insulin only included non-diabetic individuals. Diabetes was defined as fasting glucose ≥ 7.0 mmol/L, non-fasting glucose ≥ 11.1 mmol/L or the use of glucose-lowering medication. The lipid traits and fasting glucose were analyzed in mmol/L, whilst fasting insulin was analyzed in pmol/L. Fasting insulin and triglycerides were natural log-transformed. CHD (available in ARIC, CHS, EPICOR, FHS, KORA, NAS, RS, and WHI) was defined as fatal or non-fatal myocardial infarction, coronary revascularization, and unstable angina. The statistical models for the cross-phenotype analyses were similar to the basic CRP model (including age, sex, white blood cell counts, technical covariates, and smoking) with DNA methylation as the dependent variable. The associations were also adjusted for BMI, except the association with BMI itself. We conducted fixed effect meta-analyses using the inverse-variance method for total cholesterol, HDL-cholesterol, fasting glucose, fasting insulin, and prevalent diabetes. For incident CHD, associations were analyzed using (penalized) Cox regression models. Results of the cross-phenotype associations with BMI and triglycerides were meta-analyzed combining P values, taking into account the study sample size and direction of effect. Both methods are implemented in METAL. We used a Bonferroni corrected P value of 0.05 divided by the number of significant CpGs multiplied by nine phenotypes as a threshold of significant cross-phenotype association.

Gene expression analyses

To assess the relations of replicated CpGs with gene expression, we examined the association between replicated CpGs and whole blood gene expression of *cis*-genes (250 kb upstream and downstream of the CpG). The methylation-expression analyses were conducted in 3699 individuals from the FHS, KORA, and RS with both DNA methylation and gene expression available from the same blood samples. In RS and KORA, we first created residuals for both DNA methylation and messenger RNA (mRNA) expression after regressing out age, sex, blood cell counts (fixed effect), and technical covariates (random effect). We then examined the association between the residuals of DNA methylation (independent variable) and mRNA expression (dependent variable) using a linear regression model. In FHS, we removed 25 surrogate variables (SVs) [26] from the gene expression, along with sex, age, and imputed blood cell fractions as fixed effects, and technical covariates, such as batch effects and lab effects as random effects. We also removed 25 separately computed SVs from the methylation data, along with sex, age, and imputed blood cell fractions as fixed effects, and technical covariates, such as batch effects and lab effects as random

effects. We then associated the two data using a simple linear model. Expression probes were aligned to genes and unique methylation-gene expression results from FHS ($n = 2262$), KORA ($n = 707$), and RS ($n = 730$) were meta-analyzed using the sample size weighted method implemented in METAL, based on P values and direction of the effects. To reduce the type 1 error, results for the methylation-expression associations were adjusted for multiple testing using the Bonferroni correction (0.05/590 tests: $P < 8.47 \times 10^{-5}$). Furthermore, for the significant methylation-expression associations, we tested the association between the gene expression and serum CRP levels. We examined the association between gene expression (dependent variable) and CRP levels (independent variable) in a linear model adjusted for age, sex, blood cell counts, technical covariates (plate ID and RNA quality score), tobacco smoking, and BMI. Results from GTP ($n = 114$), FHS ($n = 5328$), InCHIANTI ($n = 590$), KORA ($n = 724$), and RS ($n = 870$) were meta-analyzed using the sample size weighted method implemented in METAL ($P < 0.05$ was considered significant) [24]. Information on gene expression quantification in the specific studies can be found in Additional file 13: Supplemental methods.

Genetic correlates of DNA methylation

We studied genetic variants in the proximity (± 250 kb) of the inflammation-related CpGs for a methylation quantitative trait effect on the percentage of methylation of the CpG site (*cis*-mQTL). The discovery analyses were conducted in the RS in which 730 participants were available with both genetic and epigenetic data. Genotyping information for the RS is described in Additional file 13: Supplemental methods. We used the expression quantitative trait loci (eQTL) mapping pipeline to study associations between genetic variants in a 500 kb window around the CpG site and the percentage of methylation at this CpG site [27]. This pipeline has been applied previously to study eQTL. Instead of analyzing gene expression, we modeled the correlation between genetic variants and DNA methylation and adjusted for 20 principal components derived from the DNA methylation data to account for potential unrelated variation in the DNA methylation caused by environmental or technical effects (batch effects). The threshold of significance for *cis*-mQTLs was defined according to the pipeline specifications by a false discovery rate of 5%. When multiple *cis*-mQTLs were identified for the same CpG site, only the SNP with the lowest P value was reported. Next, significant *cis*-mQTLs were replicated in FHS. The *cis*-mQTL analysis in FHS was performed on 2408 individuals having both genotype and methylation data. Genotyping information for FHS is described in Additional file 13: Supplemental methods. We removed

50 principal components from the epigenomics data, along with sex, age, and imputed blood cell fractions as fixed effects, and technical covariates, such as batch effects and lab effects as random effects. We then associate the epigenomic residual data with the genotypic data accounting for ten principal components computed using the Eigenstrat software using fixed effect linear model. We collected effect value, T statistics, and *P* value. We used a Bonferroni corrected *P* value of $0.05/20 = 2.5 \times 10^{-3}$ (based on 20 findings in the discovery) for significant replication in FHS. Subsequently, replicated *cis*-mQTLs were tested for association with serum CRP in the largest published CRP GWAS ($n = 66,185$) to strengthen the causal inference from our findings [6].

GWAS catalog, pathway analysis, and tissue enrichment

We used the National Human Genome Research Institute (NHGRI) GWAS catalog to query whether genes annotated to replicated CpGs were enriched for genes identified in published GWAS [28]. Altogether, 7600 SNPs, annotated to 4498 genes, associated with 988 phenotypes at GWAS *P* value $\leq 5 \times 10^{-8}$, were retrieved on 25 August 2016 from the NHGRI GWAS catalog. Methylation CpGs were matched by gene symbols with the reported genes in the GWAS catalog. CpGs not annotated to a gene were discarded. Enrichment statistics were performed using one-sided Fisher's test. Next, enrichment of canonical pathways was explored using Ingenuity® Pathway Analysis software tool (IPA®, QIAGEN Redwood City, <http://www.qiagen.com/ingenuity>). Replicated CpGs which mapped to a UCSC Refseq gene were included in pathway analyses. Pathway analyses were performed using the IPA software tool (IPA build version 338830 M, content version: 23814503, release date 2016-10-04, analysis date 2015-08-03; <http://www.ingenuity.com/>). Gene enrichment in canonical pathways was assessed in the core analysis module using Fisher's exact test right-tailed. Furthermore, we used experimentally derived Functional element Overlap analysis of Regions from EWAS (eFORGE) to identify tissue specific or cell-type specific signals [29]. eFORGE analyzes a set of differentially methylated CpGs for enrichment of overlap with DNase I hypersensitivity sites in different cell types of the ENCODE project. All 58 replicated CpGs were entered as the input of the eFORGE analysis. The set of 58 CpGs were tested for enrichment for overlap with putative functional elements compared to matched background CpGs. The functional elements considered are DNase I hotspots from the ENCODE project. The matched background is a set of the same number of CpGs as the test set, matched for gene relationship and CpG island relationship annotation. Thousand matched background

sets were applied. The enrichment analysis was performed for different tissues, since functional elements may differ across tissues. Enrichment outside the 99.9th percentile ($-\log_{10}$ binomial *p* value: ≥ 3.38) was considered statistically significant (red).

Additional files

Additional file 1: Table S1. Clinical characteristics of the individuals in the discovery and replication studies. (PDF 590 kb)

Additional file 2: Table S2. Study-specific quality control and analysis details. (PDF 475 kb)

Additional file 3: Table S3. Discovery and replication results of the 218 significant associations in the discovery population. (XLSX 41 kb)

Additional file 4: Table S4. Study-specific effect estimates for the replicated hits. (PDF 330 kb)

Additional file 5: Table S5. Meta-analysis results including all European and African-American whole blood studies. (XLSX 25 kb)

Additional file 6: Figures S1–S4. (PDF 1036 kb)

Additional file 7: Table S6. Association results of the 58 replicated hits in CD4+ cells in the GOLDN study. (XLSX 14 kb)

Additional file 8: Table S7. Associations of the replicated loci with nine cardiometabolic phenotypes. Significant CpG-phenotype associations are highlighted in yellow. (XLSX 12 kb)

Additional file 9: Table S8. Significant methylation-expression results and corresponding expression-CRP results for the replicated CpGs. (XLSX 11 kb)

Additional file 10: Table S9. Significant associations between DNA methylation and corresponding nearby genetic variants and between the genetic variant and CRP in the largest published GWAS of CRP ($n = 66,185$). (XLSX 12 kb)

Additional file 11: Table S10. GWAS enrichment analysis. (PDF 335 kb)

Additional file 12: Table S11. Canonical pathways identified using IPA. (PDF 339 kb)

Additional file 13: Supplemental text. (PDF 1005 kb)

Abbreviations

BMI: Body mass index; CHD: Coronary heart disease; CpG: Cytosine-phosphate-guanine; CRP: C-reactive protein; DNA: Deoxyribonucleic acid; eQTL: Expression quantitative trait locus; EWAS: Epigenome-wide association study; GWAS: Genome-wide association study; HDL-cholesterol: High-density lipoprotein cholesterol; mQTL: Methylation quantitative trait locus; NHGRI: National Human Genome Research Institute; SNP: Single nucleotide polymorphism; SV: Surrogate variable

Acknowledgements

The authors thank the staff and participants of the ARIC study for their important contributions. We thank Mr. Michael Verbiest, Ms. Mila Jhamai, Ms. Sarah Higgins, Mr. Marijn Verkerk, and Lisette Stolk PhD for their help in creating the methylation database in the Rotterdam Study. The authors are grateful to the study participants, the staff from the Rotterdam Study, and the participating general practitioners and pharmacists. The authors appreciate technical assistance from Jodie L. Van de Rostyne, Pamela I. Hammond, Julie M. Cunningham, and the Mayo Clinic Advanced Genomics Technology Center. They also thank the families that participated in the GENOA study.

Funding

The Atherosclerosis Risk in Communities (ARIC) study is carried out as a collaborative study supported by the National Heart, Lung, and Blood Institute (NHLBI) contracts (HHSN268201100005C, HHSN268201100006C, HHSN268201100007C, HHSN268201100008C, HHSN268201100009C, HHSN268201100010C, HHSN268201100011C, and HHSN268201100012C). Funding support for "Building on GWAS for NHLBI-diseases: the U.S. CHARGE

consortium" was provided by the National Institutes of Health (NIH) through the American Recovery and Reinvestment Act of 2009 (ARRA) (5RC2HL102419).

CHS: Infrastructure for the CHARGE Consortium is supported in part by the NHLBI grant R01HL105756. The CHS research was supported by NHLBI contracts HHSN268201200036C, HHSN26820080007C, N01HC55222, N01HC85079, N01HC85080, N01HC85081, N01HC85082, N01HC85083, and N01HC85086; and NHLBI grants U01HL080295, R01HL087652, R01HL092111, R01HL105756, R01HL103612, R01HL111089, R01HL116747, and R01HL120393 with additional contribution from the National Institute of Neurological Disorders and Stroke (NINDS). Additional support was provided through R01AG023629 from the National Institute on Aging (NIA) as well as the Laughlin Family, Alpha Phi Foundation, and Locke Charitable Foundation. A full list of principal CHS investigators and institutions can be found at CHS-NHLBI.org. The provision of genotyping data was supported in part by the National Center for Advancing Translational Sciences, CTSI grant UL1TR000124, and the National Institute of Diabetes and Digestive and Kidney Disease Diabetes Research Center (DRC) grant DK063491 to the Southern California Diabetes Endocrinology Research Center. The content is solely the responsibility of the authors and does not necessarily represent the official views of the NIH.

EPIC-Norfolk is supported by programme grants from the Medical Research Council (MRC) (G9502233; G0401527) and Cancer Research UK (C864/A8257). The generation and management of the Illumina 450 K methylation array data in this cohort is supported through the MRC Cambridge initiative in metabolomic science (MR/L00002/1). CEE, KKO, and NJW are supported by MRC programme grants (MC_UU_12015/1 and MC_UU_12015/2). FHS is funded by the U.S. NIH contract N01-HC-25195 and HHSN2682015000011. The laboratory work for this investigation was funded by the Division of Intramural Research, NHLBI, NIH, and by a Director's Challenge Award, NIH (DL). The analytical component of this project was funded by the Division of Intramural Research, NHLBI, and the Center for Information Technology, NIH, Bethesda, MD. This study utilized the computational resources of the Biowulf system at the NIH, Bethesda, MD (https://hpc.nih.gov/docs/user_guides.html). MMM is partly supported by the Tommy Kaplan Fund, Boston Children's Hospital. EJB was supported by 1R01 HL64753, R01 HL076784, 1R01 AG028321, and 1P50HL120163. Support for the Genetic Epidemiology Network of Arteriopathy (GENOA) was provided by the NHLBI (HL054457, HL100185, and HL119443) of the NIH. GOLDN is supported by NIH grant R01HL104135.

Methylation and expression work for GTP was primarily supported by the National Institute of Mental Health (MH096764 and MH071537 to KJR). Support was also received from Emory and Grady Memorial Hospital General Clinical Research Center, the Max Planck Society, the Behrens-Weise Foundation, NIH National Centers for Research Resources (M01RR00039), and the National Center for Advancing Translational Sciences of the NIH (UL1TR000454).

The KORA study was initiated and financed by the Helmholtz Zentrum München – German Research Center for Environmental Health, which is funded by the German Federal Ministry of Education and Research (BMBF) and by the State of Bavaria. Furthermore, KORA research was supported within the Munich Center of Health Sciences (MC-Health), Ludwig-Maximilians-Universität, as part of LMUinnovativ. The research leading to these results has received funding from the European Union's Seventh Framework Programme (FP7/2007-2013) under grant agreement no. 603288 (SysVasc) and HEALTH-F2-2013-602736 (PAIN-OMICS) and BMBF e:Med project: e:AtheroSysMed - Systems medicine of myocardial infarction and stroke. Furthermore, this study was supported in part by a grant from the BMBF to the German Center for Diabetes Research (DZD). In addition, part of this work was financed by the German National Genome Research Network (NGFNplus, project no. 01GS0834) and through additional funds from the University of Ulm.

The present work on the US Department of Veterans Affairs (VA) Normative Aging Study has been supported by funding from the U.S. National Institute of Environmental Health Sciences (NIEHS) (R01ES015172, R01ES021733). The VA Normative Aging Study is supported by the Cooperative Studies Program/ERIC, US Department of Veterans Affairs, and is a research component of the Massachusetts Veterans Epidemiology Research and Information Center (MAVERIC). Additional support to the VA Normative Aging Study was provided by the US Department of Agriculture, Agricultural Research Service (contract 53-K06-510). The views expressed

in this paper are those of the authors and do not necessarily represent the views of the US Department of Veterans Affairs.

The generation and management of the Illumina 450 K methylation array data (EWAS data) for the Rotterdam Study was executed by the Human Genotyping Facility of the Genetic Laboratory of the Department of Internal Medicine, Erasmus MC, the Netherlands. The EWAS data were funded by the Genetic Laboratory of the Department of Internal Medicine, Erasmus MC, and by the Netherlands Organization for Scientific Research (NWO; project number 184021007). The Rotterdam Study is funded by Erasmus Medical Center and Erasmus University, Rotterdam, Netherlands Organization for the Health Research and Development (ZonMw), the Research Institute for Diseases in the Elderly (RIDE), the Ministry of Education, Culture and Science, the Ministry for Health, Welfare and Sports, the European Commission (DG XII), and the Municipality of Rotterdam.

Availability of data and materials

The DNA methylation datasets analyzed during the current study are available at the following public repositories: dbGAP (FHS: phs000724.v5.p10; GOLDN: phs000741.v1.p1; NAS: phs000853.v1.p1; WHI: phs000200.v10.p3), GEO (GTP: GSE72680), and EGA (LBC: EGAS00001000910). The DNA methylation dataset from ARIC is available on request at <https://www2.csc.unc.edu/aric/distribution-agreements>; the CHS data can be requested at <https://chs-nhlbi.org/node/6222>; for the EPIC data contact Ken K. Ong (Ken.Ong@mrc-epid.cam.ac.uk); EPICOR data are available upon request from HuGeF (<http://www.hugef-torino.org/>) by means of a project agreement. Requests should be sent to info@hugef-torino.org; for the GENOA data contact Sharon L.R. Kardina (skardina@umich.edu) and Jennifer A. Smith (smjenn@umich.edu); the InCHIANTI data are available on request at <http://inchiastudy.net/wp/inchiasti-dataset/>; the KORA data can be requested at KORA-gen (<http://www.helmholtz-muenchen.de/kora-gen>); for the RS data, request at <http://www.epib.nl/research/ergo.htm> or contact M. Arfan Ikram (m.ikram@erasmusmc.nl). The genotype and expression datasets from the FHS are available in the dbGAP repository (phs000724.v5.p10, phs000363.v15.p10). The gene expression dataset from the GTP, InCHIANTI, and RS are available in the GEO repository (GSE58137, GSE48152, and GSE33828). The source codes used for the analysis are available to download from <https://github.com/slighthart/EWAS-CRP> and deposited at Zenodo.org under doi:10.5281/zenodo.166797.

Authors' contributions

SL, SA, and AD designed the study and wrote the analysis plan. SL, CM, KNC, TT, EC, LLW, RJ, WG, JAB, CE, RM, MAJ, GA, JB, CKWC, JS, ACJ, CL, JCB, and KLW conducted the epigenome-wide association studies in the different participating studies. SL, RJ, and KS performed the methylation-expression association. SL, KNC, RJ, KS, LCP, and MJP conducted the expression-CRP associations. GA, JB, CKWC, BHC, TH, ELS, and GF analyzed the replicated CpG sites with incident coronary heart disease. NS, JSP, SG, VJM, AYC, HL, JMM, JMS, SLRK, SB, AP, OHF, STT, LF, TA, WK, and AD were responsible for the measurement of CRP and further phenotyping in the studies. SW, DGH, JAS, NS, WZ, AKS, MF, HP, CH, HG, SS, AFM, SH, DF, APF, SLRK, DMA, EBB, ABS, MW, EWD, AGU, JBJvM, YDIC, DL, KKO, and STT performed measurements of methylation status. PT, DM, PV, SH, AH, NJW, JMS, PMV, SLRK, DMA, AP, SB, GM, JDS, IID, KJR, LF, TA, EAB, DKA, AAB, and EJB led the participating studies. SL wrote the first draft of the manuscript, which was first edited by CM, SA, MMM, KNC, EC, WG, SW, NS, AKS, MW, DL, JD, EJB, and AD. All authors contributed to the interpretation of the results and the writing of the paper. All authors read and approved the final manuscript.

Competing interests

OHF works in ErasmusAGE, a center for aging research across the life course funded by Nestlé Nutrition (Nestec Ltd.), Metagenics Inc., and AXA. Nestlé Nutrition (Nestec Ltd.), Metagenics Inc., and AXA had no role in the design and conduct of the study; collection, management, analysis, and interpretation of the data; and preparation, review or approval of the manuscript.

Ethics approval and consent to participate

All participants provided written informed consent to participate in the studies and for publication of the findings of the study. The ARIC study is approved by the University of Mississippi Medical Center IRB, Wake Forest University Health Sciences IRB, University of Minnesota IRB, and John

Hopkins University IRB. The CHS study is approved by the Wake Forest University Health Sciences IRB, University of California, Davis IRB, John Hopkins University IRB, and University of Pittsburgh IRB, and University of Washington IRB (UW 37714-EG). The EPIC study complies with the principles of the Declaration of Helsinki and ethical approval was given by the Norfolk Local Research Ethics Committee and the East Norfolk and Waveney NHS Research Governance Committee. All subjects of the EPICOR study signed an informed consent at their inclusion into the EPIC-Italy cohort. The EPICOR study was approved by the Ethical Committee of the Human Genetics Foundation (Turin, Italy). The Framingham Heart Study Offspring Cohort examination 8 was approved by the Boston University Medical Center Institutional Review Board (#H-22762) and the DNA methylation subproject by the NHLBI'S IRB (#11-H-N127). The GENOA study was approved at the IRBs of the University of Michigan, Mayo Clinic, and University of Mississippi Medical Center. For the GTP study, all procedures were approved by the IRBs of Emory University School of Medicine and Grady Memorial Hospital. The GOLDN study protocol was approved by IRBs at the University of Minnesota, University of Utah, Tufts University/New England Medical Center, and University of Alabama at Birmingham; all research procedures heeded the principles of the Declaration of Helsinki and all participants provided written informed consent. The InCHIANTI study protocol was approved by the Italian National Institute of Research and Care of Aging Institutional Review and Medstar Research Institute (Baltimore, MD). The KORA study has been approved by the Bayerische Landesärztekammer (IRB: 00001087). Ethics permission for LBC1921 was obtained from the Lothian Research Ethics Committee (wave 3: LREC/1702/98/4/183). Ethics permission for LBC1936 was obtained from the Multi-Centre Research Ethics Committee for Scotland (wave 1: MREC/01/0/56) and the Lothian Research Ethics Committee (wave 1: LREC/2003/2/29). The NAS study was approved by the Institutional Review Board of the Harvard T.H. Chan School of Public Health. The Rotterdam Study has been approved by Medical Ethics Committee of the Erasmus MC and the Dutch Ministry of Health, Welfare and Sport. The WHI study had been approved by the IRB of the Stanford University (IRB-34553).

Author details

¹Department of Epidemiology, Erasmus University Medical Center, Rotterdam, The Netherlands. ²Institute of Epidemiology II, Research Unit of Molecular Epidemiology, Helmholtz Zentrum München, German Research Center for Environmental Health, Neuherberg, Germany. ³German Center for Diabetes Research (DZD e.V.), Partner Munich, Germany. ⁴Department of Epidemiology, University of Alabama at Birmingham, Birmingham, AL, USA. ⁵Boston University School of Medicine, Boston, MA, USA. ⁶Department of Cardiology, Boston Children's Hospital, Boston, MA, USA. ⁷Population Sciences Branch, National Heart, Lung, and Blood Institute, National Institutes of Health, Bethesda, MD, USA. ⁸Department of Human Genetics, Emory University School of Medicine, Atlanta, GA, USA. ⁹Translational Gerontology Branch, National Institute on Aging, Baltimore, MD, USA. ¹⁰Department of Environmental Health, Harvard T.H. Chan School of Public Health, Boston, MA, USA. ¹¹HudsonAlpha Institute for Biotechnology, Huntsville, AL, USA. ¹²Hebrew SeniorLife, Harvard Medical School, Boston, MA, USA. ¹³Division of Biostatistics, School of Public Health, University of Minnesota, Minneapolis, MN, USA. ¹⁴Cardiovascular Health Research Unit, Department of Medicine, University of Washington, Seattle, WA, USA. ¹⁵MRC Epidemiology Unit, Institute of Metabolic Science, University of Cambridge, Cambridge, UK. ¹⁶Centre for Cognitive Ageing and Cognitive Epidemiology, University of Edinburgh, Edinburgh, UK. ¹⁷Medical Genetics Section, Centre for Genomic and Experimental Medicine, Institute of Genetics and Molecular Medicine, University of Edinburgh, Edinburgh, UK. ¹⁸Queensland Brain Institute, The University of Queensland, Brisbane, QLD, Australia. ¹⁹Department of Epidemiology, School of Public Health, University of Michigan, Ann Arbor, MI, USA. ²⁰Human Genetics Center, School of Public Health, University of Texas Health Science Center at Houston, Houston, TX, USA. ²¹Institute of Epidemiology II, Helmholtz Zentrum München, German Research Center for Environmental Health, Neuherberg, Germany. ²²Longitudinal Studies Section, Translational Gerontology Branch, Intramural Research Program, National Institute on Aging, National Institutes of Health, Baltimore, MD, USA. ²³Center for Epigenetics, Johns Hopkins University School of Medicine, Baltimore, MD, USA. ²⁴Department of Medicine - Division of Cardiovascular Medicine, Stanford University School of Medicine, Stanford, CA, USA. ²⁵Human Genetics Foundation, Torino, Italy. ²⁶Department of Medical Sciences, University of Torino, Torino, Italy. ²⁷Institute of Human Genetics, Helmholtz Center Munich,

German Research Center for Environmental Health, Neuherberg, Germany. ²⁸Institute of Human Genetics, Technical University Munich, München, Germany. ²⁹Laboratory of Neurogenetics, National Institute on Aging, Bethesda, MD, USA. ³⁰Epidemiology and Public Health, University of Exeter Medical School, RILD Building Level 3 Research, Exeter, UK. ³¹Division of Epidemiology & Community Health, School of Public Health, University of Minnesota, Minneapolis, MN, USA. ³²Stanford University School of Medicine, Palo Alto, CA, USA. ³³VA Palo Alto Health Care System, Palo Alto, CA, USA. ³⁴Department of Biostatistics, Boston University School of Public Health, Boston, MA 02118, USA. ³⁵Department of Psychiatry and Behavioral Sciences, Emory University School of Medicine, Atlanta, GA, USA. ³⁶Department of Internal Medicine, Erasmus University Medical Center, Rotterdam, The Netherlands. ³⁷VA Boston Healthcare System and Boston University Schools of Public Health and Medicine, Jamaica Plain, Boston, MA, USA. ³⁸Institute of Clinical Diabetology, German Diabetes Center, Leibniz Center for Diabetes Research at Heinrich Heine University Düsseldorf, Düsseldorf, Germany. ³⁹German Center for Diabetes Research (DZD e.V.), München-Neuherberg, Germany. ⁴⁰University of Queensland Diamantina Institute, Translational Research Institute, The University of Queensland, Brisbane, QLD, Australia. ⁴¹UCLA, Department of Human Genetics, Gonda Research Center, David Geffen School of Medicine, Los Angeles, CA, USA. ⁴²Department of Epidemiology, Harvard T.H. Chan School of Public Health, Boston, MA, USA. ⁴³Max-Planck Institute of Psychiatry, Munich, Germany. ⁴⁴Geriatric Unit, Azienda Sanitaria Firenze (ASF), Florence, Italy. ⁴⁵Department of Environmental Health and Epidemiology, Harvard T.H. Chan School of Public Health, Boston, MA, USA. ⁴⁶Department of Pediatrics, Harbor-UCLA Medical Center, Torrance, CA, USA. ⁴⁷Division of Nephrology and Hypertension, Mayo Clinic, Rochester, MN, USA. ⁴⁸Division of Depression & Anxiety Disorders, McLean Hospital, Belmont, MA, USA. ⁴⁹Department of Psychiatry, Harvard Medical School, Boston, MA, USA. ⁵⁰Department of Medicine, Stanford University School of Medicine, Stanford, CA, USA. ⁵¹Department of Internal Medicine II-Cardiology, University of Ulm Medical Center, Ulm, Germany. ⁵²Deutsches Herzzentrum München, Technische Universität München, Munich, Germany. ⁵³DZHK (German Center for Cardiovascular Research), partner site Munich Heart Alliance, Munich, Germany. ⁵⁴University of Kentucky, College of Public Health, Lexington, KY, USA. ⁵⁵Department of Epidemiology, Boston University School of Public Health, Boston, MA, USA. ⁵⁶Boston University and the NHLBI's Framingham Heart Study, Boston, MA, USA. ⁵⁷Department of Biostatistics and Epidemiology, MRC-PHE Centre for Environment and Health, School of Public Health, Imperial College London, London, UK.

Received: 7 October 2016 Accepted: 30 November 2016

Published online: 12 December 2016

References

- Hansson GK, Hermansson A. The immune system in atherosclerosis. *Nat Immunol.* 2011;12:204–12.
- Donath MY, Shoelson SE. Type 2 diabetes as an inflammatory disease. *Nat Rev Immunol.* 2011;11:98–107.
- Pepys MB. The acute phase response and C-reactive protein. *Oxford Textbook Med.* 1995;2:1527–33.
- Emerging Risk Factors Collaboration. C-reactive protein concentration and risk of coronary heart disease, stroke, and mortality: an individual participant meta-analysis. *Lancet.* 2010;375:132–40.
- Xu H, Barnes GT, Yang Q, Tan G, Yang D, Chou CJ, et al. Chronic inflammation in fat plays a crucial role in the development of obesity-related insulin resistance. *J Clin Invest.* 2003;112:1821.
- Dehghan A, Dupuis J, Barbalic M, Bis JC, Eiriksdottir G, Lu C, et al. Meta-analysis of genome-wide association studies in > 80 000 subjects identifies multiple loci for C-reactive protein levels. *Circulation.* 2011;123:731–8.
- Jones PA. Functions of DNA methylation: islands, start sites, gene bodies and beyond. *Nat Rev Genet.* 2012;13:484–92.
- Barfield RT, Almlil LM, Kilaru V, Smith AK, Mercer KB, Duncan R, et al. Accounting for population stratification in DNA methylation studies. *Genet Epidemiol.* 2014;38:231–41.
- Hornung V, Ablasser A, Charrel-Dennis M, Bauerfeind F, Horvath G, Caffrey DR, et al. AIM2 recognizes cytosolic dsDNA and forms a caspase-1-activating inflammasome with ASC. *Nature.* 2009;458:514–8.
- Martinon F, Tschopp J. Inflammatory caspases and inflammasomes: master switches of inflammation. *Cell Death Differ.* 2007;14:10–22.

11. Carow B, Rottenberg ME. SOCS3, a major regulator of infection and inflammation. *Front Immunol.* 2014;5:58.
12. Ortiz-Munoz G, Martin-Ventura JL, Hernandez-Vargas P, Mallavia B, Lopez-Parra V, Lopez-Franco O, et al. Suppressors of cytokine signaling modulate JAK/STAT-mediated cell responses during atherosclerosis. *Arterioscler Thromb Vasc Biol.* 2009;29:525–31.
13. Gao X, Jia M, Zhang Y, Breitling LP, Brenner H. DNA methylation changes of whole blood cells in response to active smoking exposure in adults: a systematic review of DNA methylation studies. *Clin Epigenetics.* 2015;7:1–10.
14. Chambers JC, Loh M, Lehne B, Drong A, Kriebel J, Motta V, et al. Epigenome-wide association of DNA methylation markers in peripheral blood from Indian Asians and Europeans with incident type 2 diabetes: a nested case–control study. *Lancet Diab Endocrinol.* 2015;3:526–34.
15. Schnabel RB, Lunetta KL, Larson MG, Dupuis J, Lipinska I, Rong J, et al. The relation of genetic and environmental factors to systemic inflammatory biomarker concentrations. *Circ Cardiovasc Genet.* 2009;2:229–37.
16. Shah S, Bonder MJ, Marioni RE, Zhu Z, McRae AF, Zernakova A, et al. Improving phenotypic prediction by combining genetic and epigenetic associations. *Am J Hum Genet.* 2015;97:75–85.
17. Jabs WJ, Busse M, Krüger S, Jocham D, Steinhoff J, Doeberl C. Expression of C-reactive protein by renal cell carcinomas and unaffected surrounding renal tissue. *Kidney Int.* 2005;68:2103–10.
18. Kishimoto T, Akira S, Narazaki M, Taga T. Interleukin-6 family of cytokines and gp130. *Blood.* 1995;86:1243–54.
19. Dick KJ, Nelson CP, Tsaprouni L, Sandling JK, Aïssi D, Wahl S, et al. DNA methylation and body-mass index: a genome-wide analysis. *Lancet.* 2014;383:1990–8.
20. Psaty BM, O'Donnell CJ, Gudnason V, Lunetta KL, Folsom AR, Rotter JJ, et al. Cohorts for heart and aging research in genomic epidemiology (CHARGE) consortium design of prospective meta-analyses of genome-wide association studies from 5 cohorts. *Circ Cardiovasc Genet.* 2009;2:73–80.
21. Chen Y-A, Lemire M, Choufani S, Butcher DT, Grafodatskaya D, Zanke BW, et al. Discovery of cross-reactive probes and polymorphic CpG sites in the Illumina Infinium HumanMethylation450 microarray. *Epigenetics.* 2013;8:203–9.
22. Houseman EA, Accomando WP, Koestler DC, Christensen BC, Marsit CJ, Nelson HH, et al. DNA methylation arrays as surrogate measures of cell mixture distribution. *BMC Bioinformatics.* 2012;13:86.
23. Aryee MJ, Jaffe AE, Corrada-Bravo H, Ladd-Acosta C, Feinberg AP, Hansen KD, et al. Minfi: a flexible and comprehensive Bioconductor package for the analysis of Infinium DNA methylation microarrays. *Bioinformatics.* 2014;30:1363–9.
24. Willer CJ, Li Y, Abecasis GR. METAL: fast and efficient meta-analysis of genomewide association scans. *Bioinformatics.* 2010;26:2190–1.
25. Faul F, Erdfelder E, Buchner A, Lang A-G. Statistical power analyses using G* Power 3.1: Tests for correlation and regression analyses. *Behav Res Methods.* 2009;41:1149–60.
26. Parker HS, Leek JT, Favorov AV, Consideine M, Xia X, Chavan S, et al. Preserving biological heterogeneity with a permuted surrogate variable analysis for genomics batch correction. *Bioinformatics.* 2014;30:2757–63.
27. Westra H-J, Peters MJ, Esko T, Yaghootkar H, Schurmann C, Kettunen J, et al. Systematic identification of trans eQTLs as putative drivers of known disease associations. *Nat Genet.* 2013;45:1238–43.
28. Welter D, MacArthur J, Morales J, Burdett T, Hall P, Junkins H, et al. The NHGRI GWAS Catalog, a curated resource of SNP-trait associations. *Nucleic Acids Res.* 2014;42:D1001–6.
29. Breeze CE, et al. "eFORGE: a tool for identifying cell type-specific signal in epigenomic data." *Cell Reports* 17.8. 2016:2137–2150.

Submit your next manuscript to BioMed Central and we will help you at every step:

- We accept pre-submission inquiries
- Our selector tool helps you to find the most relevant journal
- We provide round the clock customer support
- Convenient online submission
- Thorough peer review
- Inclusion in PubMed and all major indexing services
- Maximum visibility for your research

Submit your manuscript at
www.biomedcentral.com/submit

