

University of Kentucky

UKnowledge

Agricultural Economics Presentations

Agricultural Economics

10-2009

Market Situation and Outlook for Hogs, Poultry and Small Ruminants

A. Lee Meyer

University of Kentucky, lmeyer@uky.edu

Follow this and additional works at: https://uknowledge.uky.edu/agecon_present



Part of the [Agricultural Economics Commons](#), and the [Animal Sciences Commons](#)

[Right click to open a feedback form in a new tab to let us know how this document benefits you.](#)

Repository Citation

Meyer, A. Lee, "Market Situation and Outlook for Hogs, Poultry and Small Ruminants" (2009). *Agricultural Economics Presentations*. 12.

https://uknowledge.uky.edu/agecon_present/12

This Presentation is brought to you for free and open access by the Agricultural Economics at UKnowledge. It has been accepted for inclusion in Agricultural Economics Presentations by an authorized administrator of UKnowledge. For more information, please contact UKnowledge@lsv.uky.edu.

Market Situation and Outlook for Hogs, Poultry and Small Ruminants

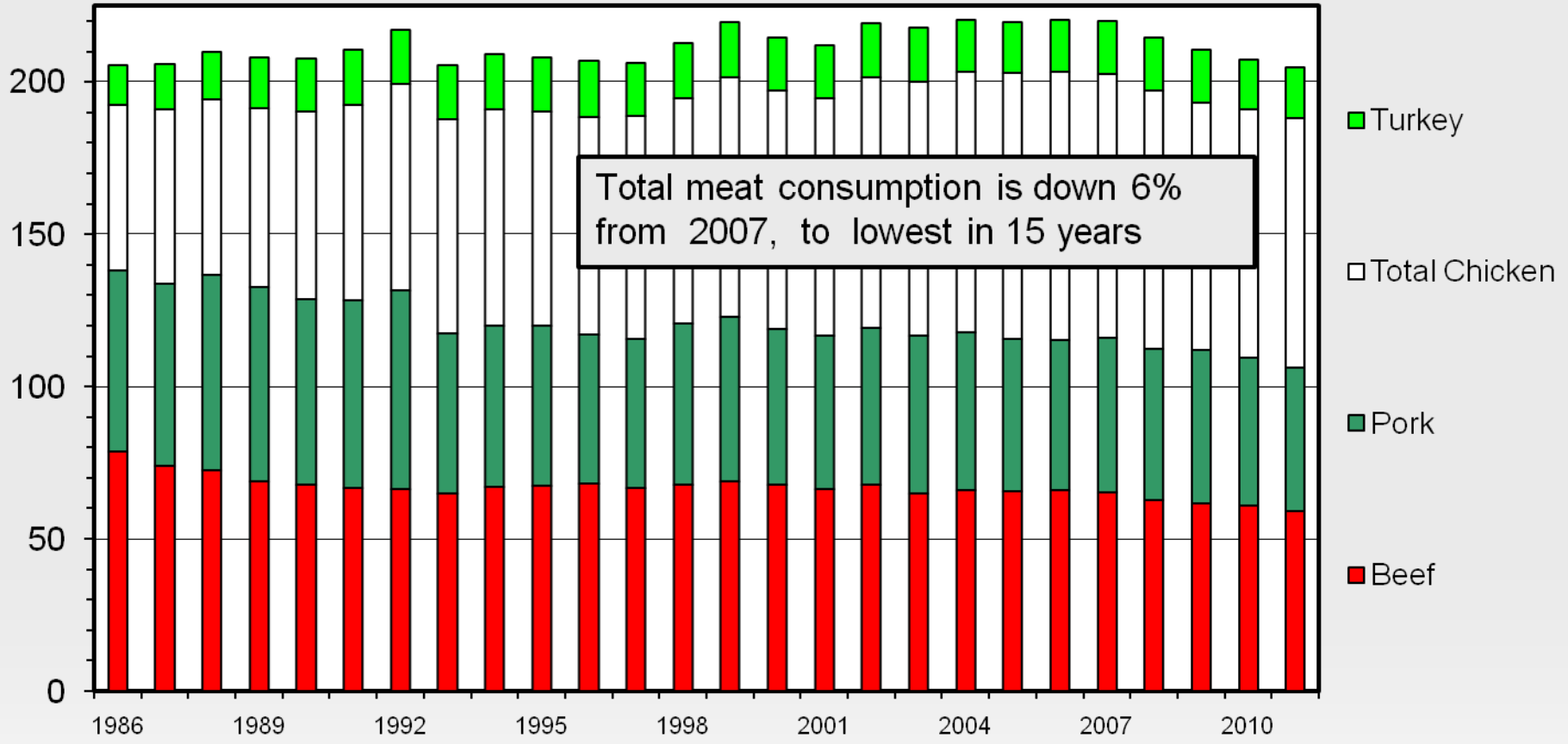
Lee Meyer

Extension Marketing Specialist

U S RED MEAT & POULTRY CONSUMPTION

Per Capita, Retail Weight, Annual

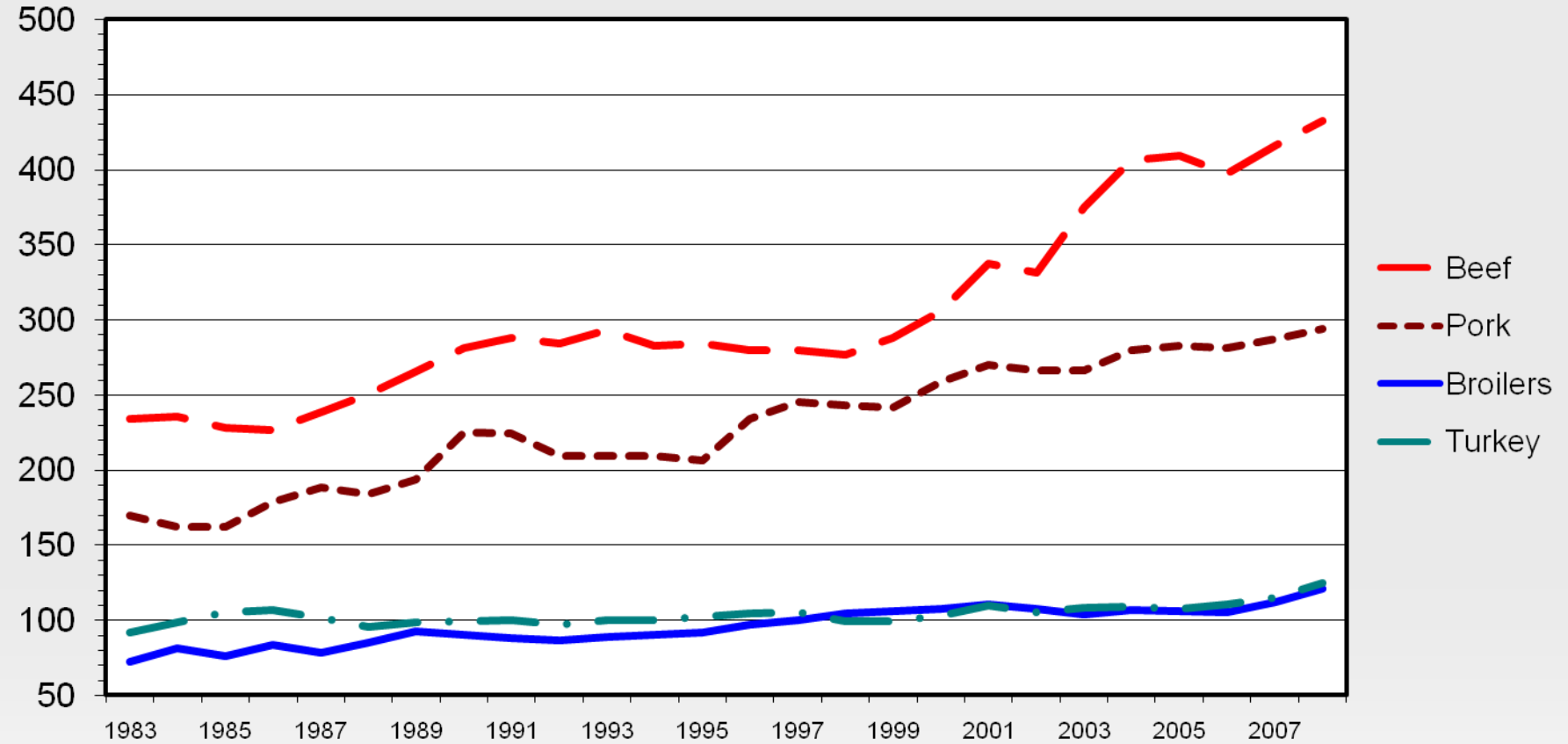
Pounds



RETAIL MEAT AND POULTRY PRICES

Nominal, Annual

Cents Per Pound



Global Meat Situation

➤ Trade – Exchange Rate Roller Coaster

- Dollar increased 25% in value against Brazil's real, hurting U.S. sales, but then dropped back
- Dollar vs. the Yen, dropped from 110 (Dec. '08) to 92 (Oct. '09) → US products more expensive
- Increasing world incomes will increase demand for meat products (+5%, \$900 m)

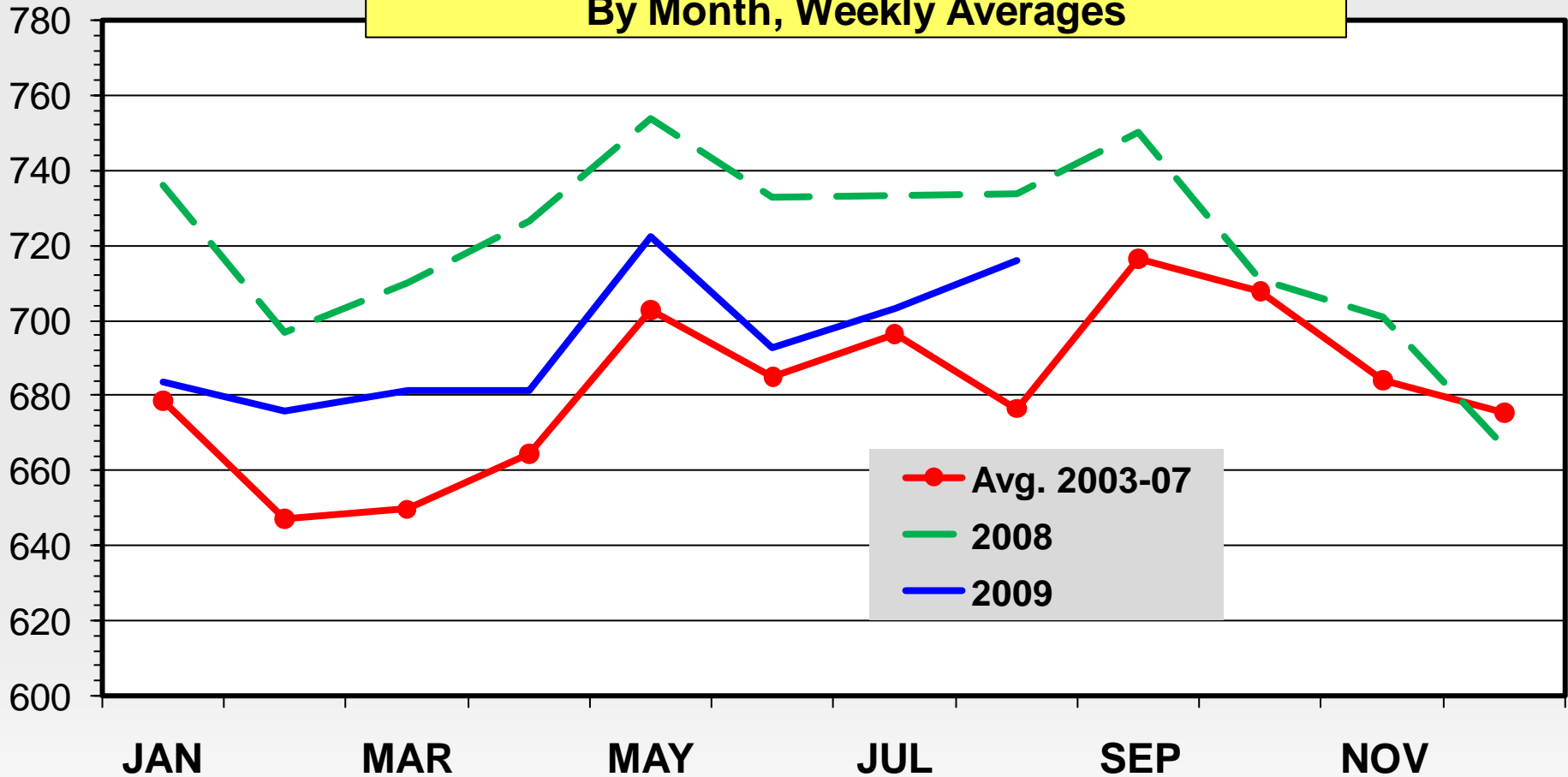
Broiler Market Overview

- Production costs up → 4% prod. drop
- Steady '09 prices (~\$.80) , mixed parts prices (wings up, weak breast meat prices)
- For 2010 – prod up 2%, modest price improvement
- Trade – competition from Brazil, increases may depend on the world economy

BROILER PRODUCTION

Federally Inspected, Ready-to-Cook Weight,
By Month, Weekly Averages

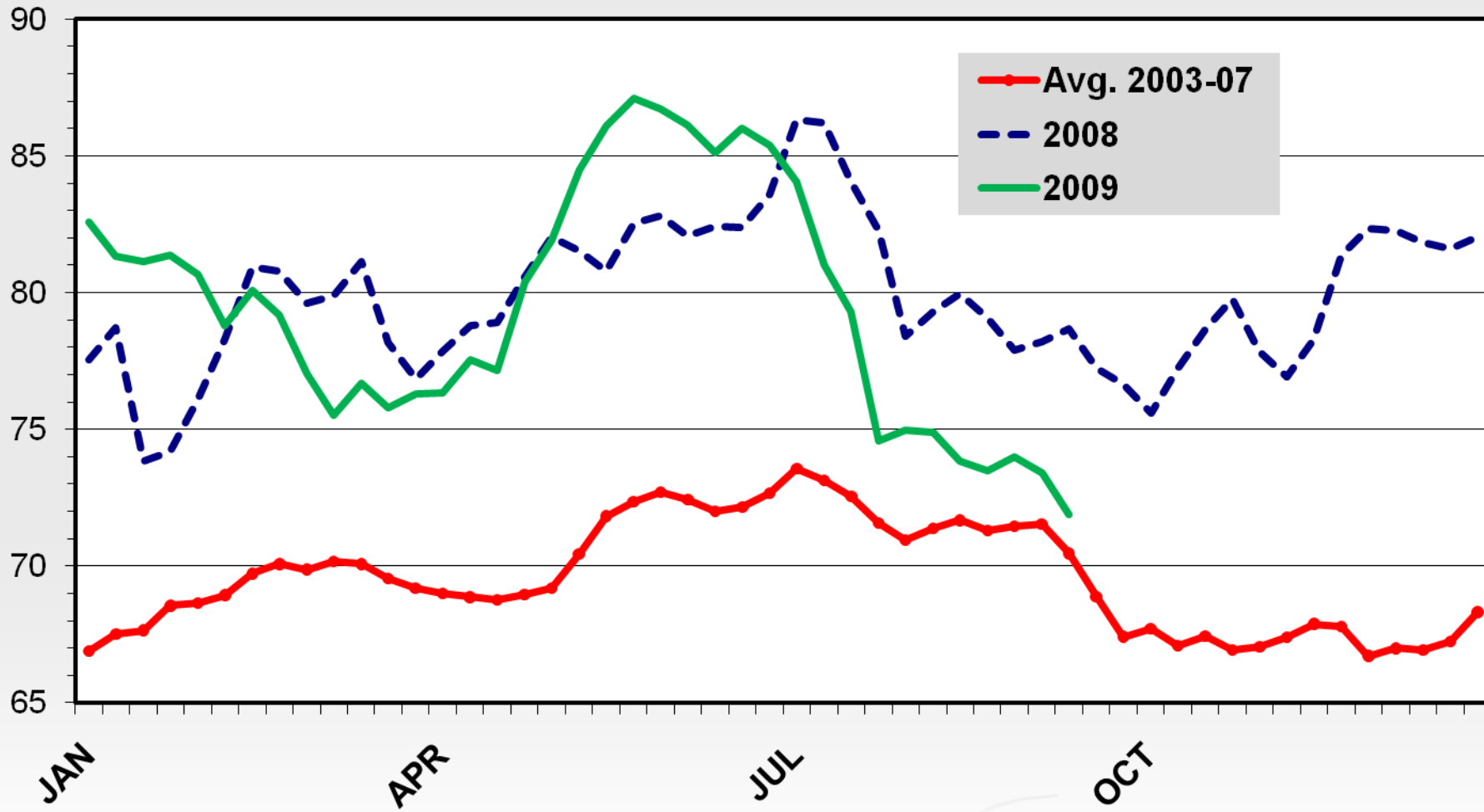
Mil. Pounds



BROILER PRICES

12-City Composite, Weekly

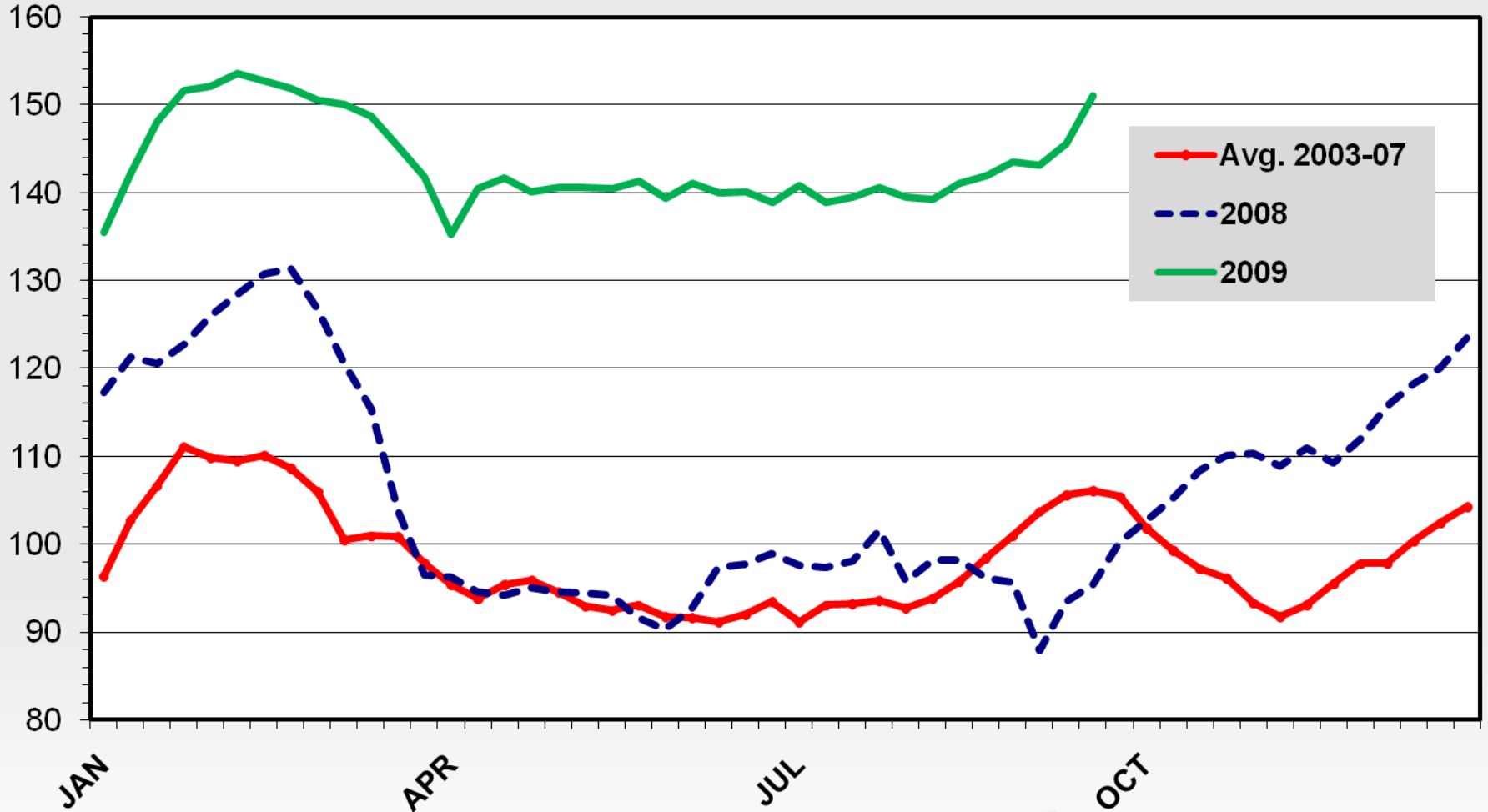
Cents Per Pound



WHOLESALE CHICKEN WING PRICES

Northeast, Truckload, Weekly

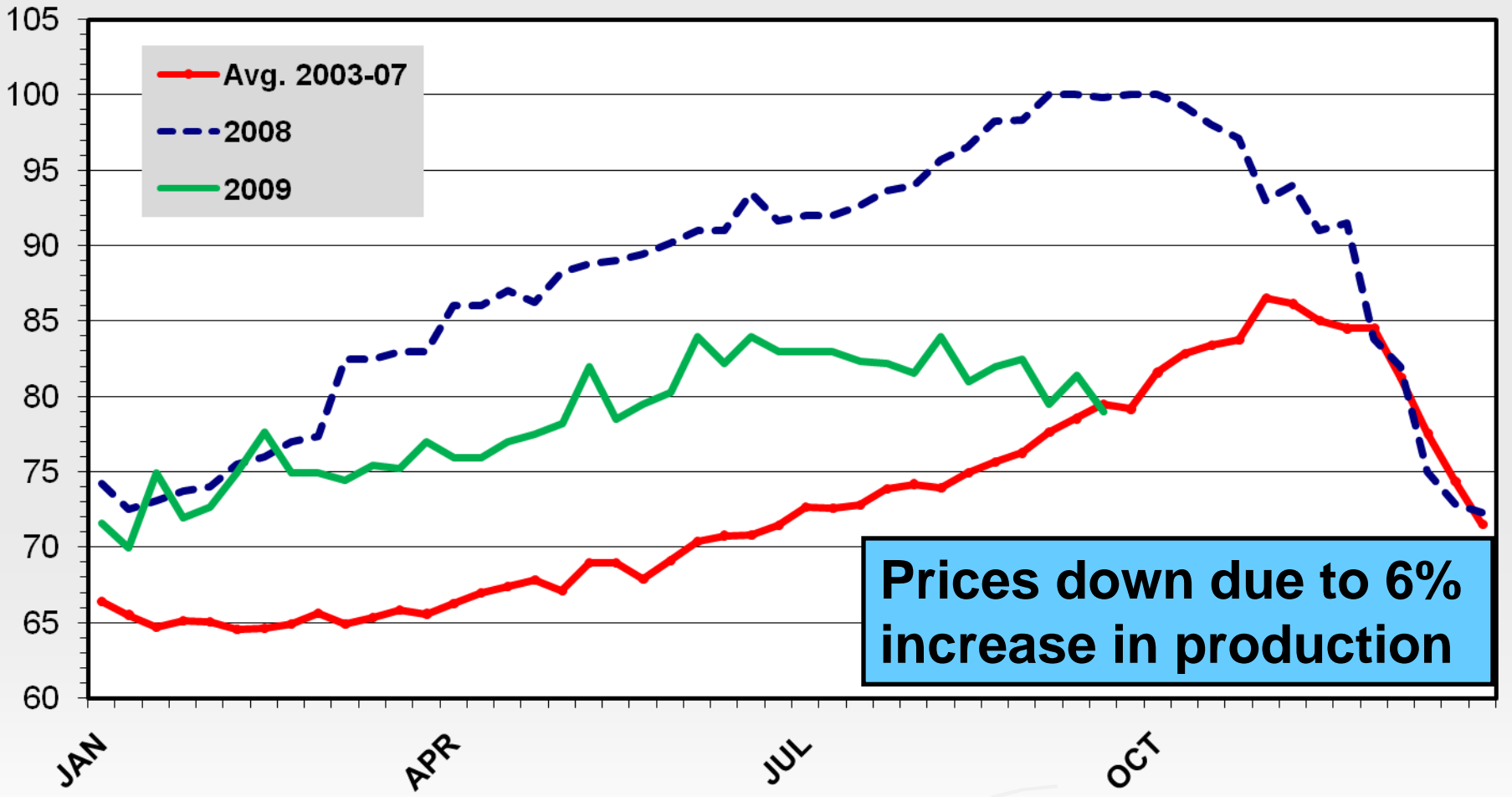
Cents Per Pound



TURKEY PRICES

Eastern Hens, 8-16 Pounds, Weekly

Cents Per Pound

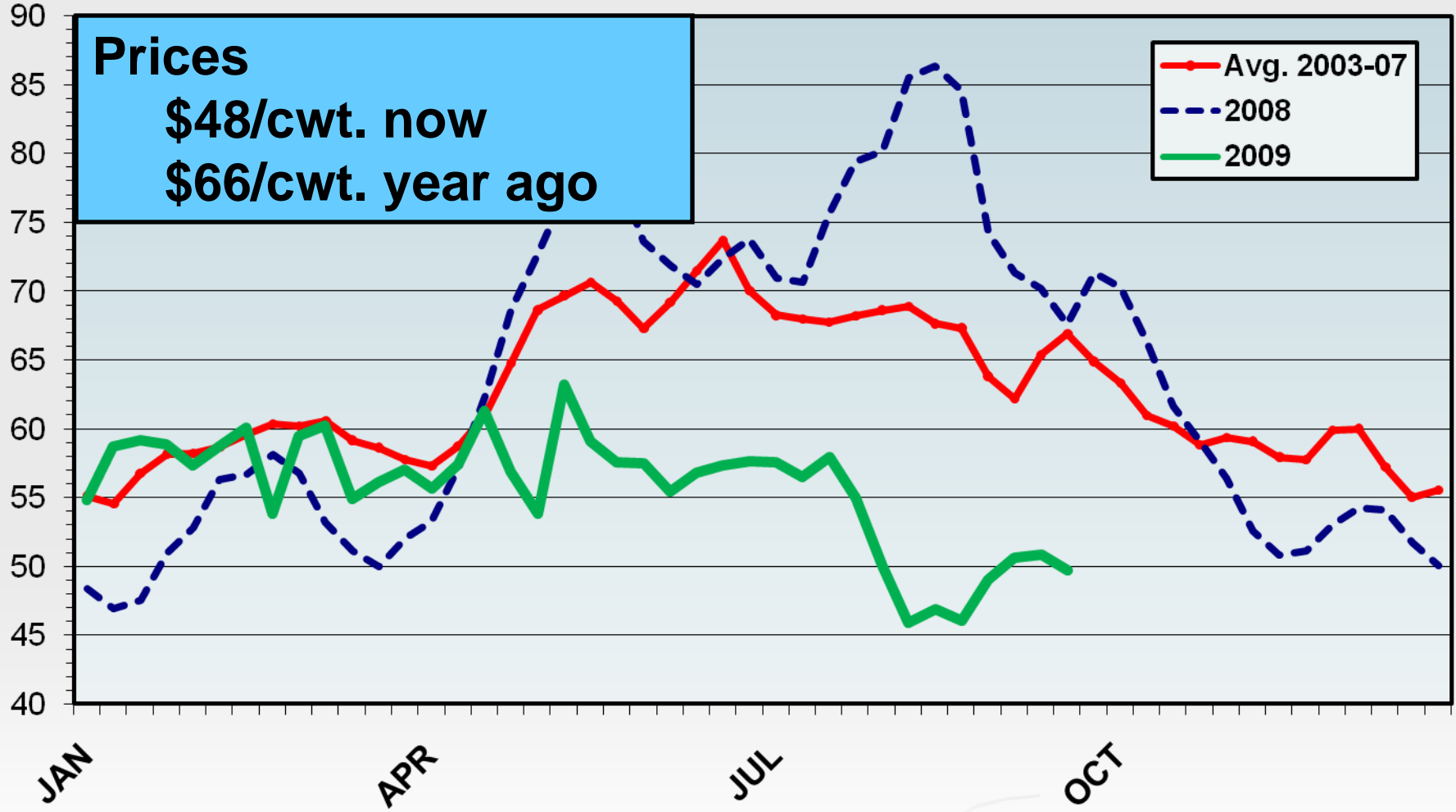


Prices down due to 6% increase in production

BARROW AND GILT PRICES

Iowa - So. Minnesota, Carcass Base Price, Weekly

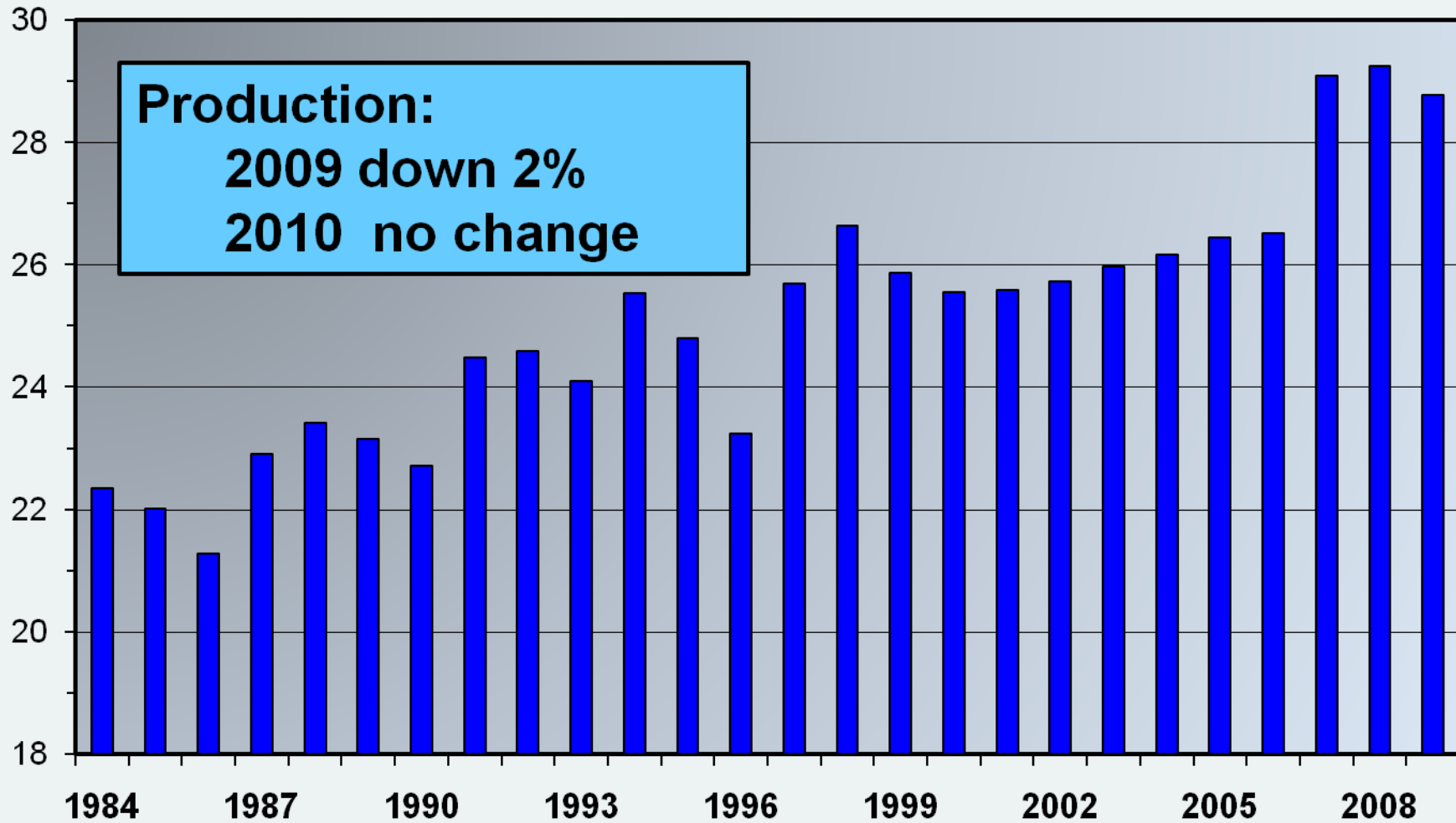
\$ Per Cwt.



PIG CROP

U.S., June-August

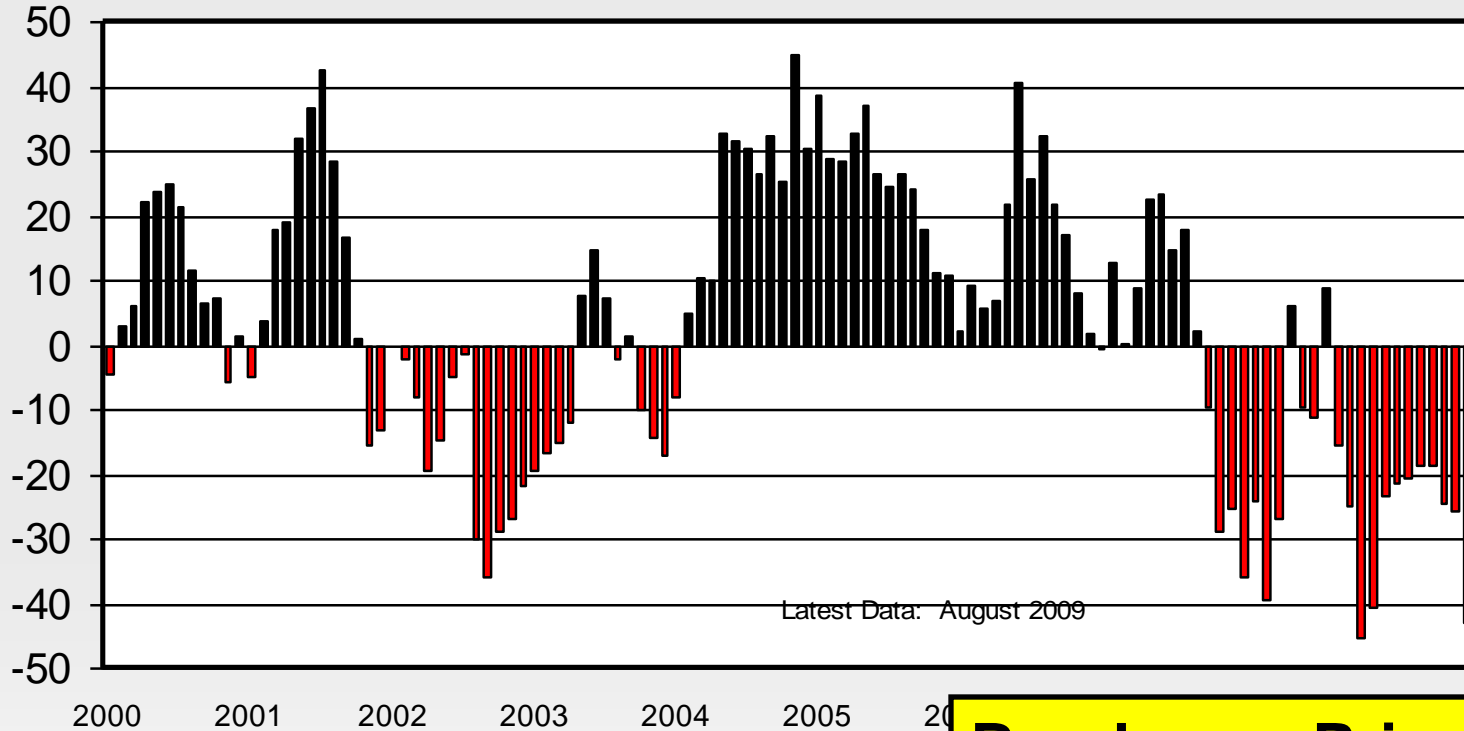
Mil. Head



Iowa Market Hog Profit

Farrow/Finish, Monthly

\$/Head



Livestock Marketing Information Center

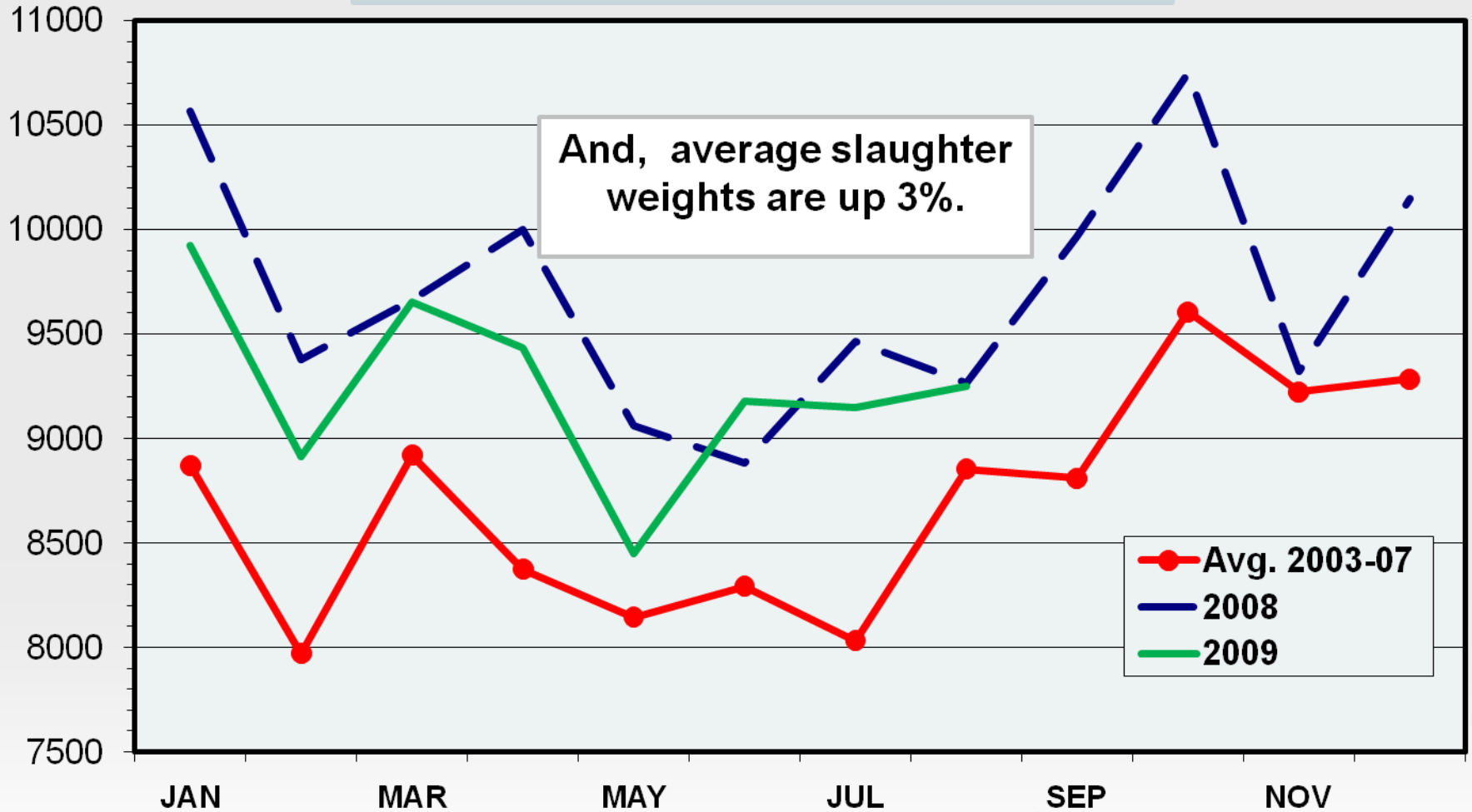
Data Source: Iowa State University

**Breakeven Price –
low \$50s/cwt.**

HOG SLAUGHTER

Monthly

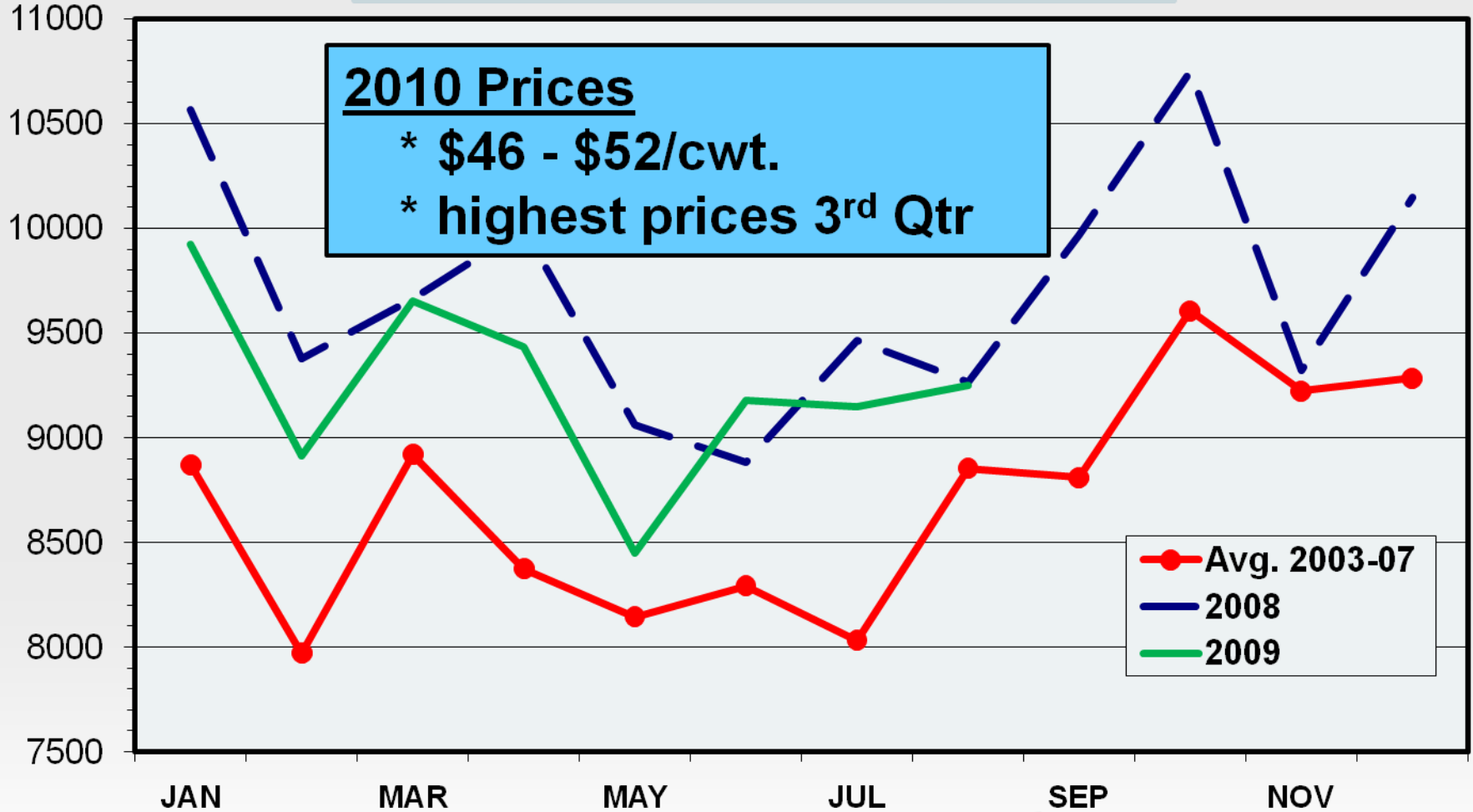
Thou. Head



HOG SLAUGHTER

Monthly

Thou. Head

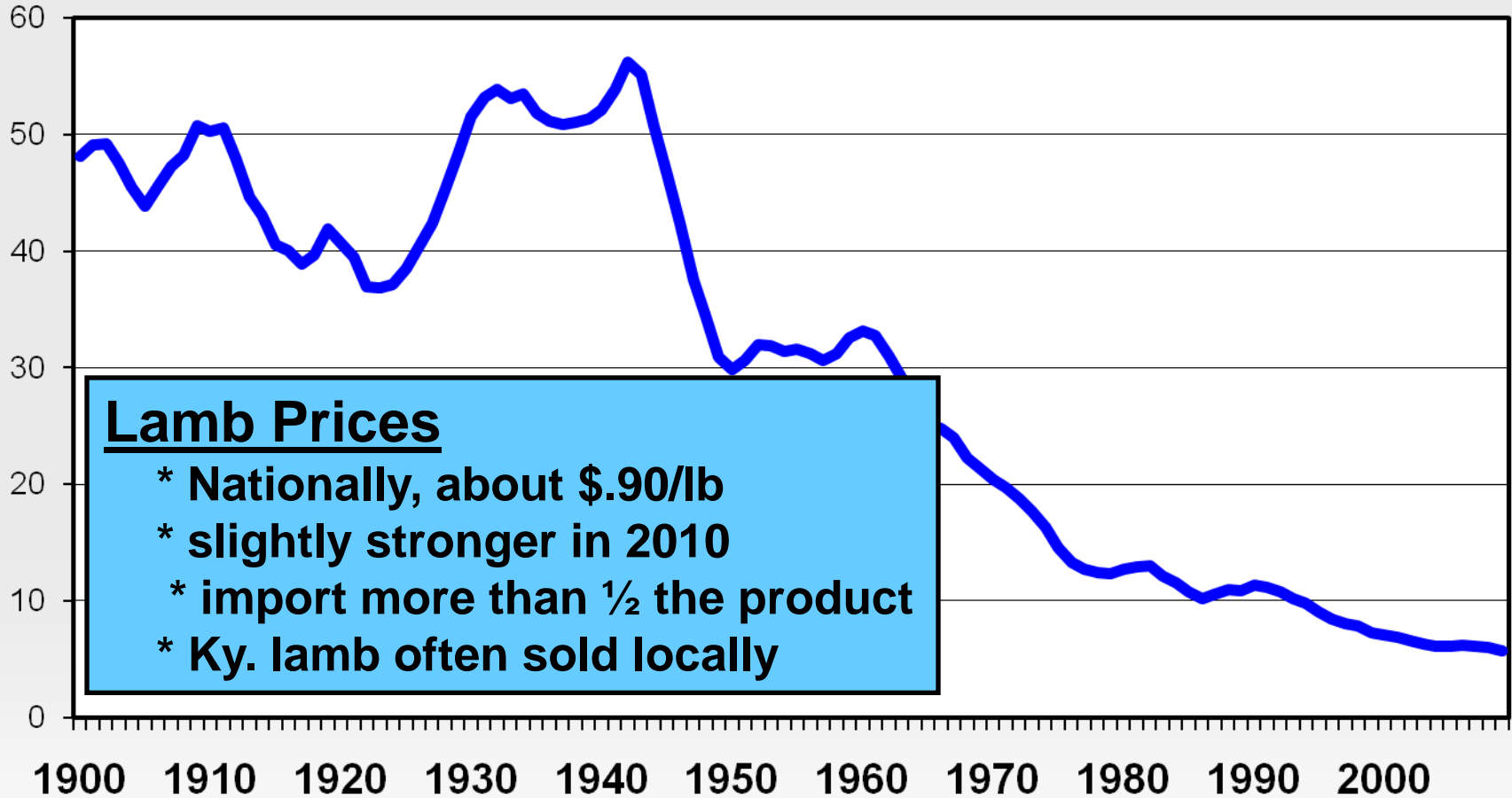


Year	Ky. Goats	U.S. Goats	Ky. Sheep	U.S. Sheep
	1,000 hd.	1,000 hd.	1,000 hd.	1,000 hd.
2004	63	2,044	26	6,105
2005	64	2,150	32	6,135
2006	68	2,287	35	6,230
2007	74	2,402	37	6,165
2008	81	2,500	37	6,055
2009	73	3,070	40	5,750

SHEEP & LAMB INVENTORY

January 1, U.S., Annual

Mil. Head

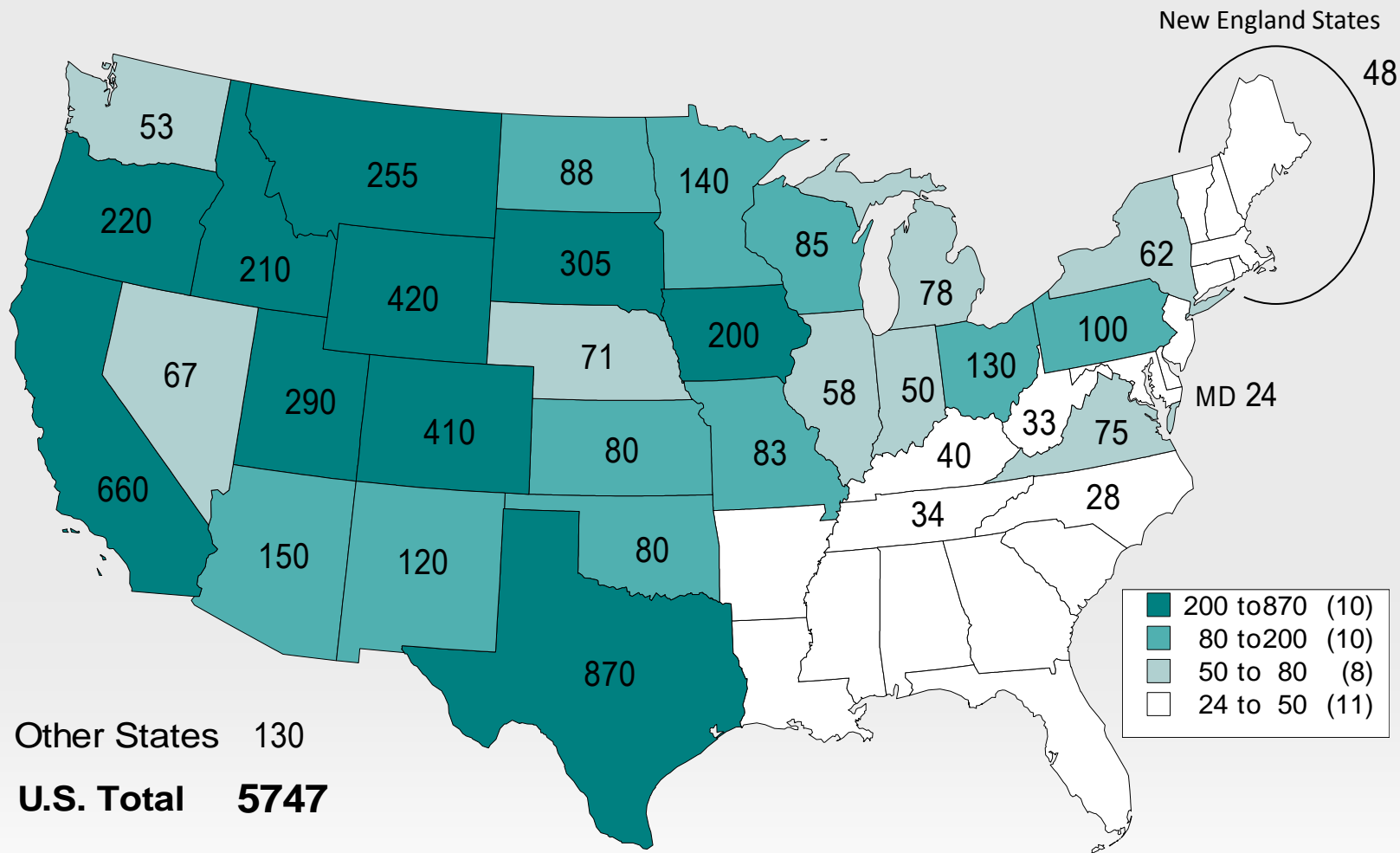


Lamb Prices

- * Nationally, about \$.90/lb
- * slightly stronger in 2010
- * import more than 1/2 the product
- * Ky. lamb often sold locally

SHEEP & LAMB NUMBERS

JANUARY 1, 2009 (1000 Head)

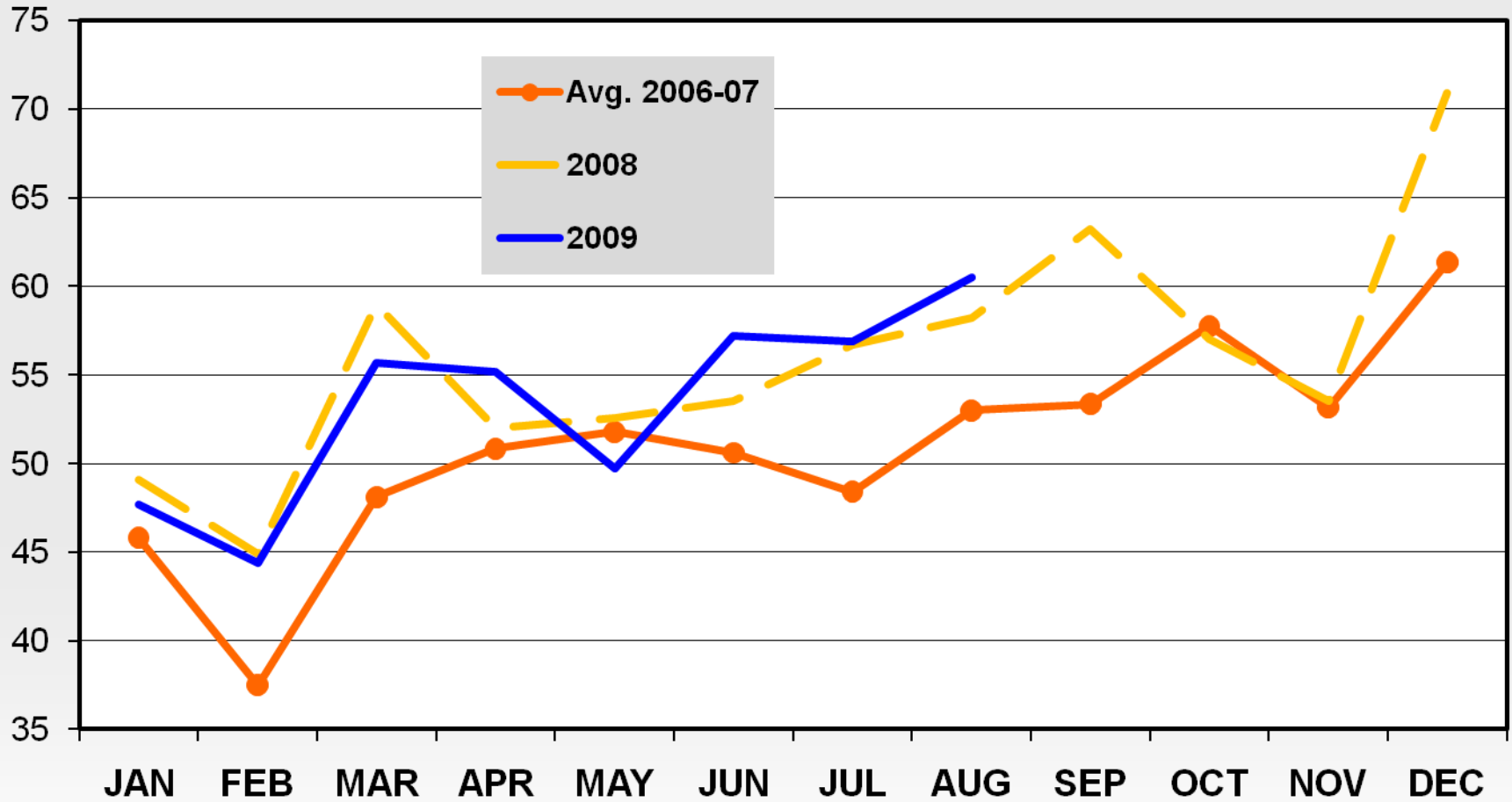


S-N-05

FI GOAT SLAUGHTER

Monthly 2006-09

Thou. Head



GOAT PRICES

New Holland, PA
40 -60 lb. Selection #2 Kids (\$/head)

