

A complex network diagram with numerous nodes of various colors (blue, green, yellow, grey) connected by thin grey lines, set against a light grey background with faint circular patterns.

Research Analytics Maturity Model & HERD

Transforming Tomorrow by
Using Data to Drive Decisions

Baron G. Wolf, PhD
Principal Investigator

Kat L. Robershaw, PhD
Sr. Research Associate

Research Funding Acknowledgement

This research has been funded by the National Science Foundation, National Center for Science and Engineering Statistics

Research Analytics Using the Higher Education Research and Development Survey (HERD) to Impact Institutional Strategy ([Grant #2215223](#))



Principal Investigator: Baron Wolf

Co-Principal Investigator: Erin Walleth

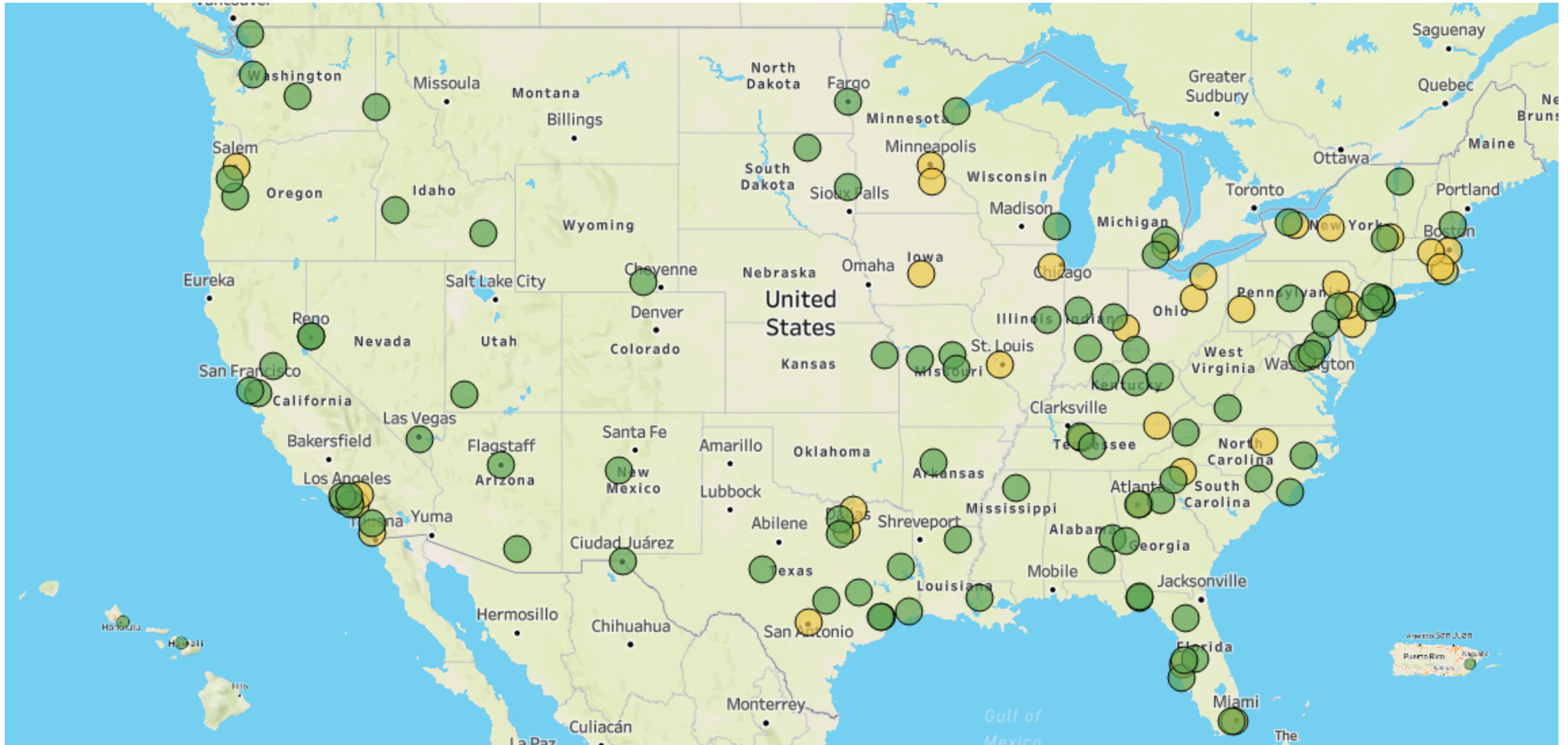
Sr. Research Associate: Kat Robershaw

Research Adviser: Shannon Sampson

Survey Respondents

Sector of institution

- Public, 4-year or above
- Private not-for-profit, 4-year or above



Overview



Research Analytics &
HERD - Introduction
and Scope



Research Analytics
Capabilities (RAC)
Maturity Model



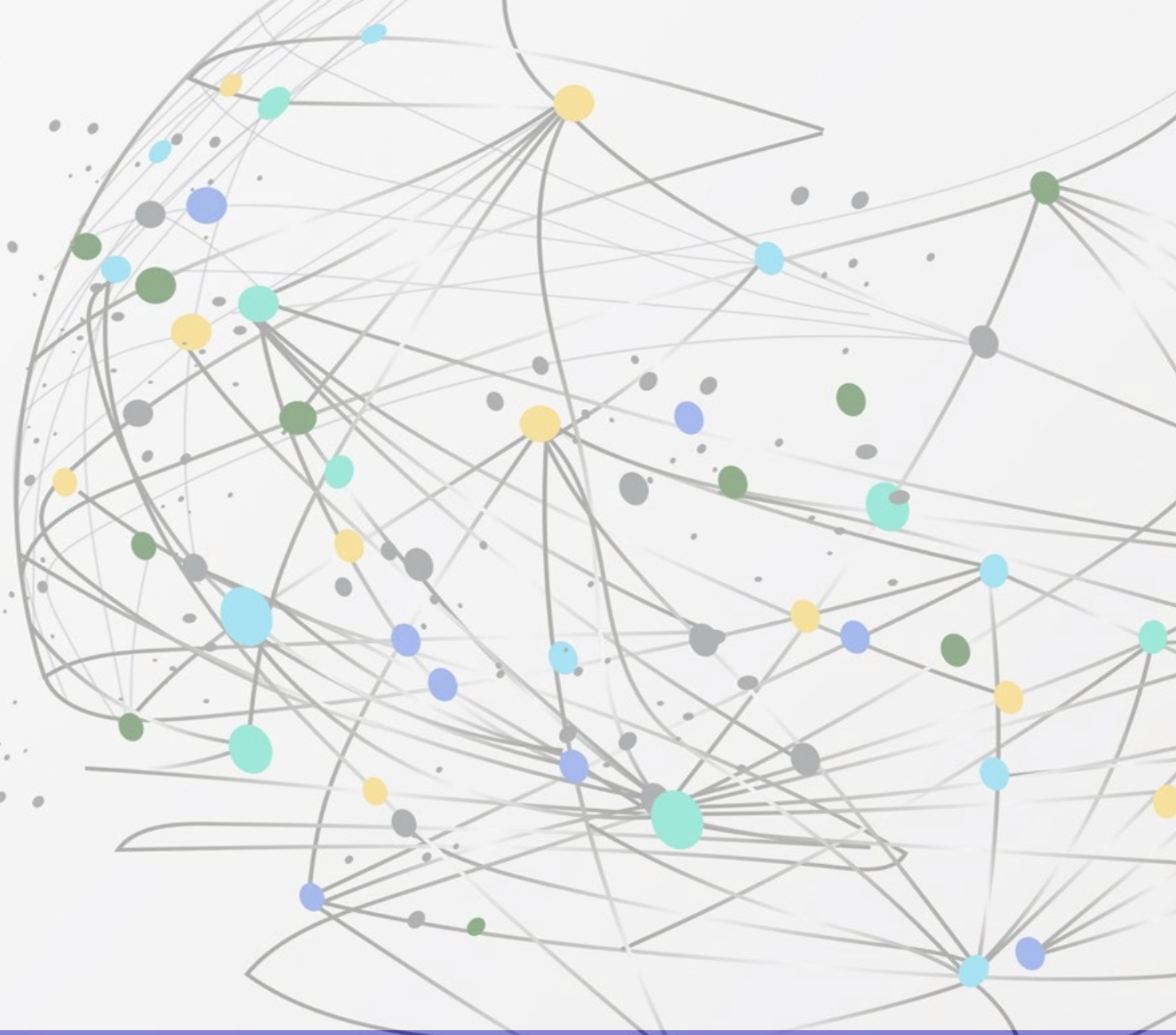
A study about HERD
Survey Data Collection



Preliminary Results

Research Analytics and HERD

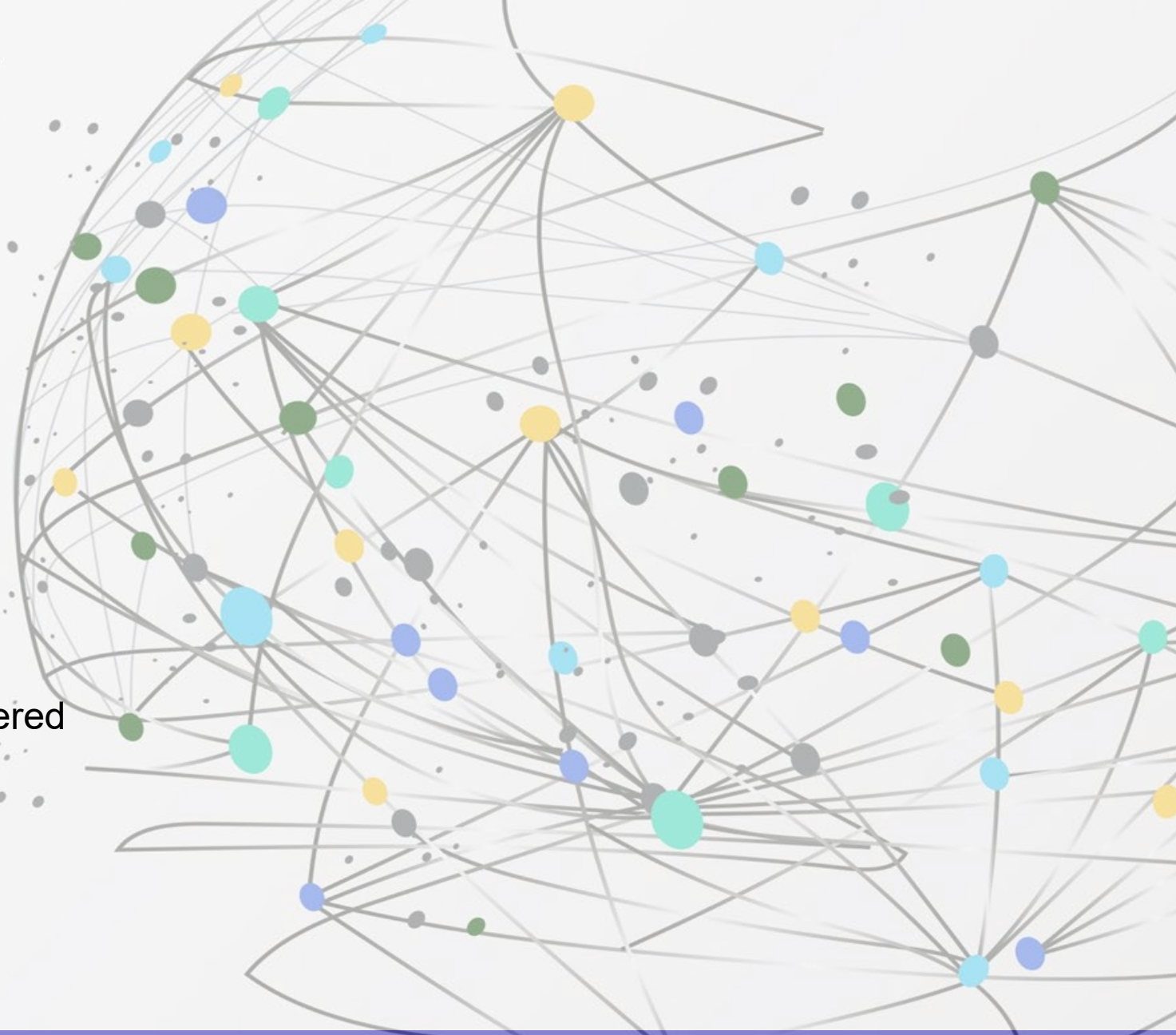
Introduction and Scope



Research Analytics and HERD

Introduction and Scope

- **What is research analytics**
- **Why research analytics**
- **The NSF Project**
 - Rationale
 - Timeline
 - What we have done and discovered
 - Where we are now
 - Where we are heading

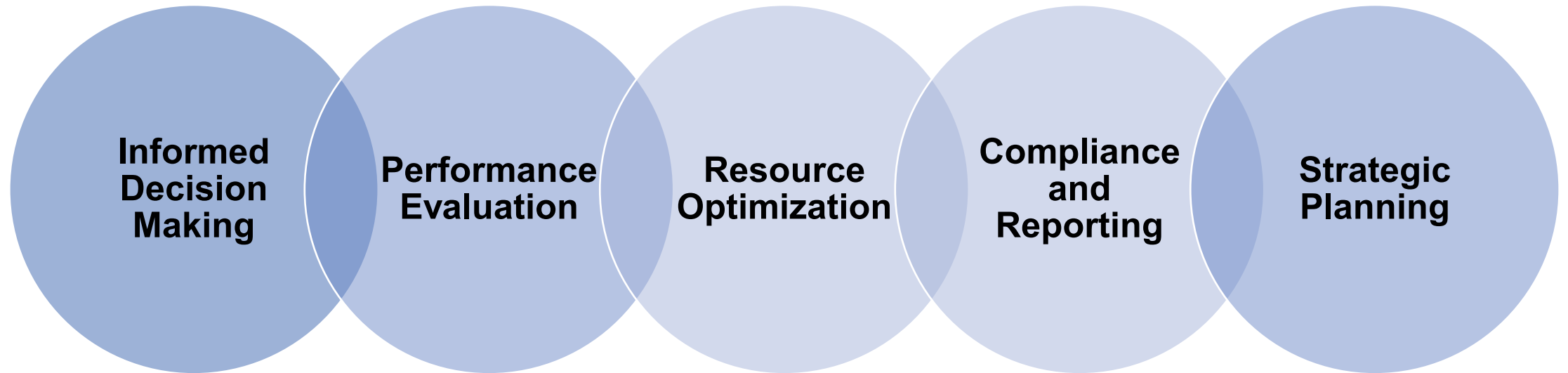


What is Research Analytics?

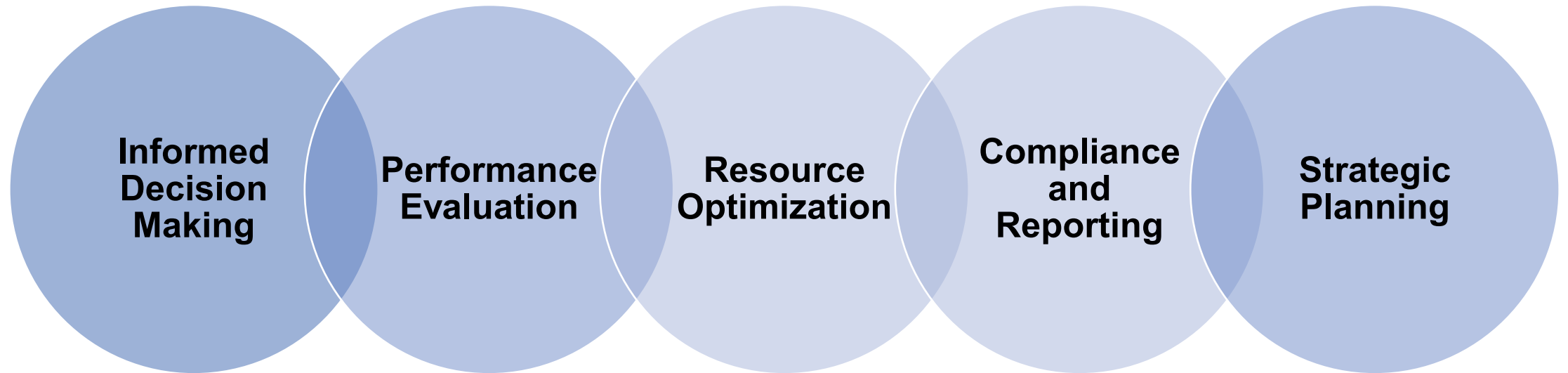
“Research analytics is the **science of analyzing data** to make **data-informed decisions** for **strategic planning, research and development** and **business processes** related to research administration functions.”

Robersshaw, Katherine and Wolf, Baron, Research Analytics: A Systematic Literature Review (February 18, 2023). Available at SSRN: <https://ssrn.com/abstract=4363262> or <http://dx.doi.org/10.2139/ssrn.4363262>

Why Research Analytics?



Why Research Analytics?

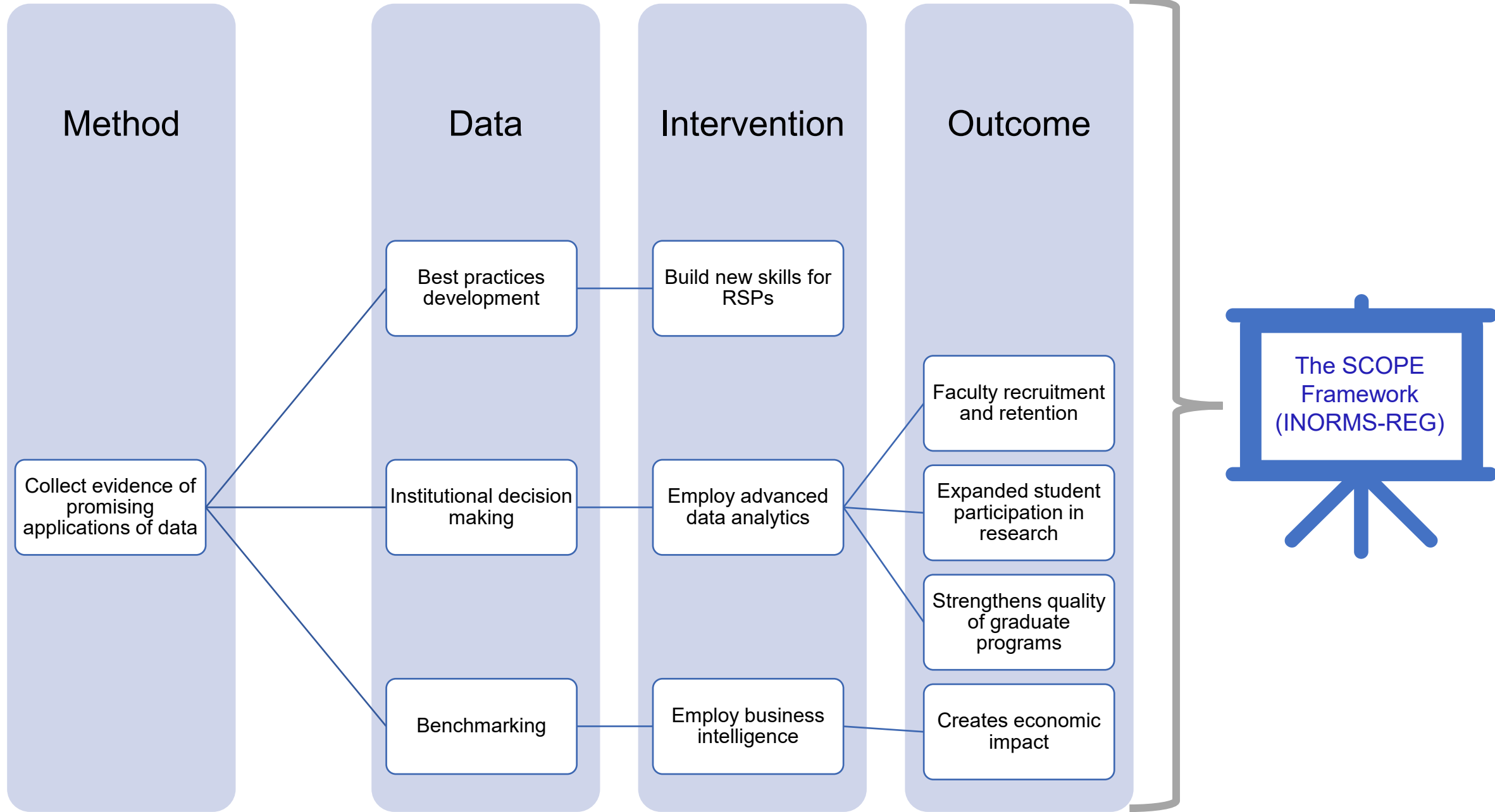


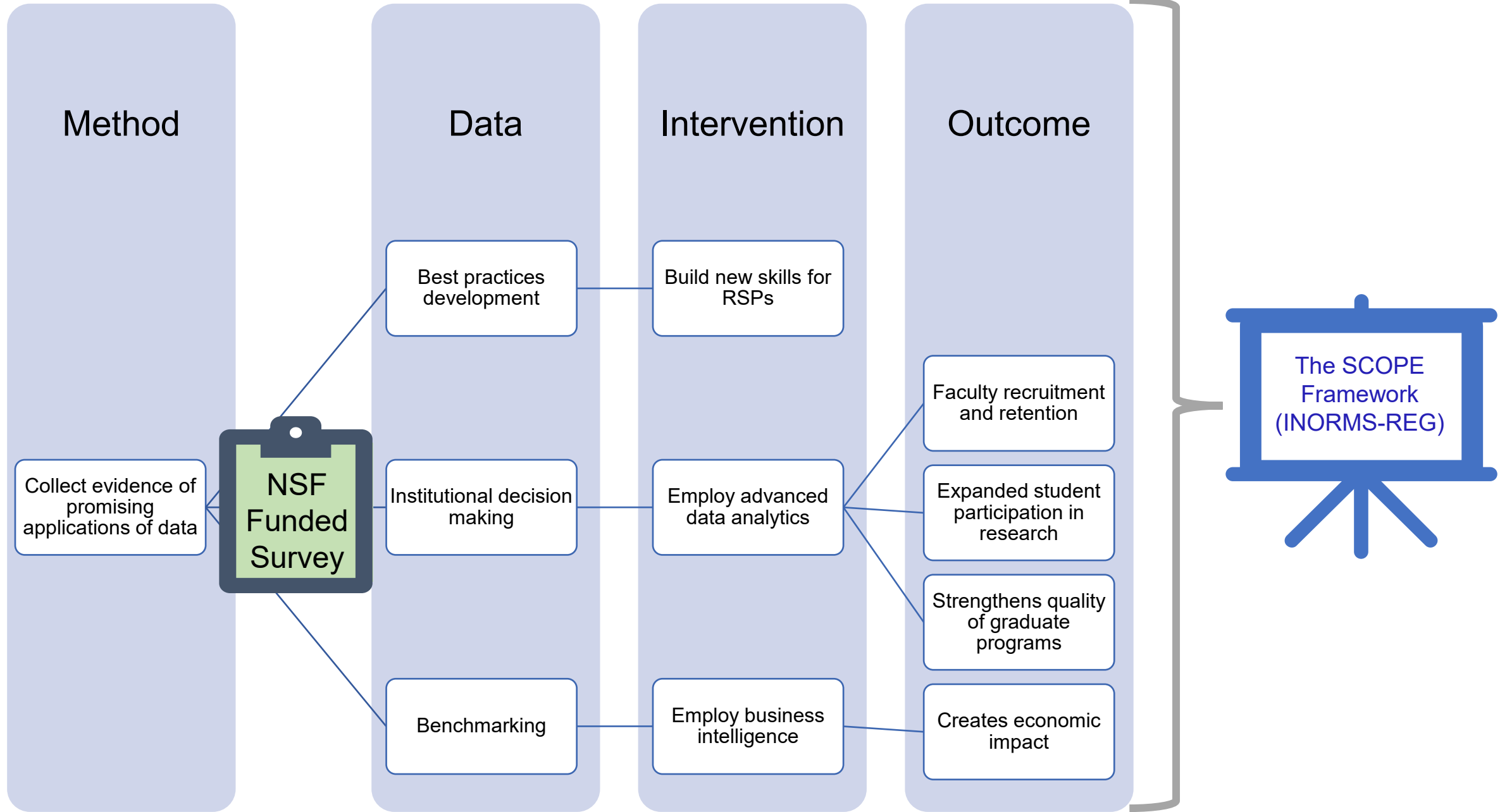
**Sustain and Grow the Research Enterprise
for New Discoveries & Impact**

A complex network diagram with numerous nodes of various colors (blue, green, yellow, cyan, grey) connected by a dense web of grey lines. The nodes are scattered across the frame, with a higher concentration in the right half. The background is light grey with a subtle pattern of small grey dots.

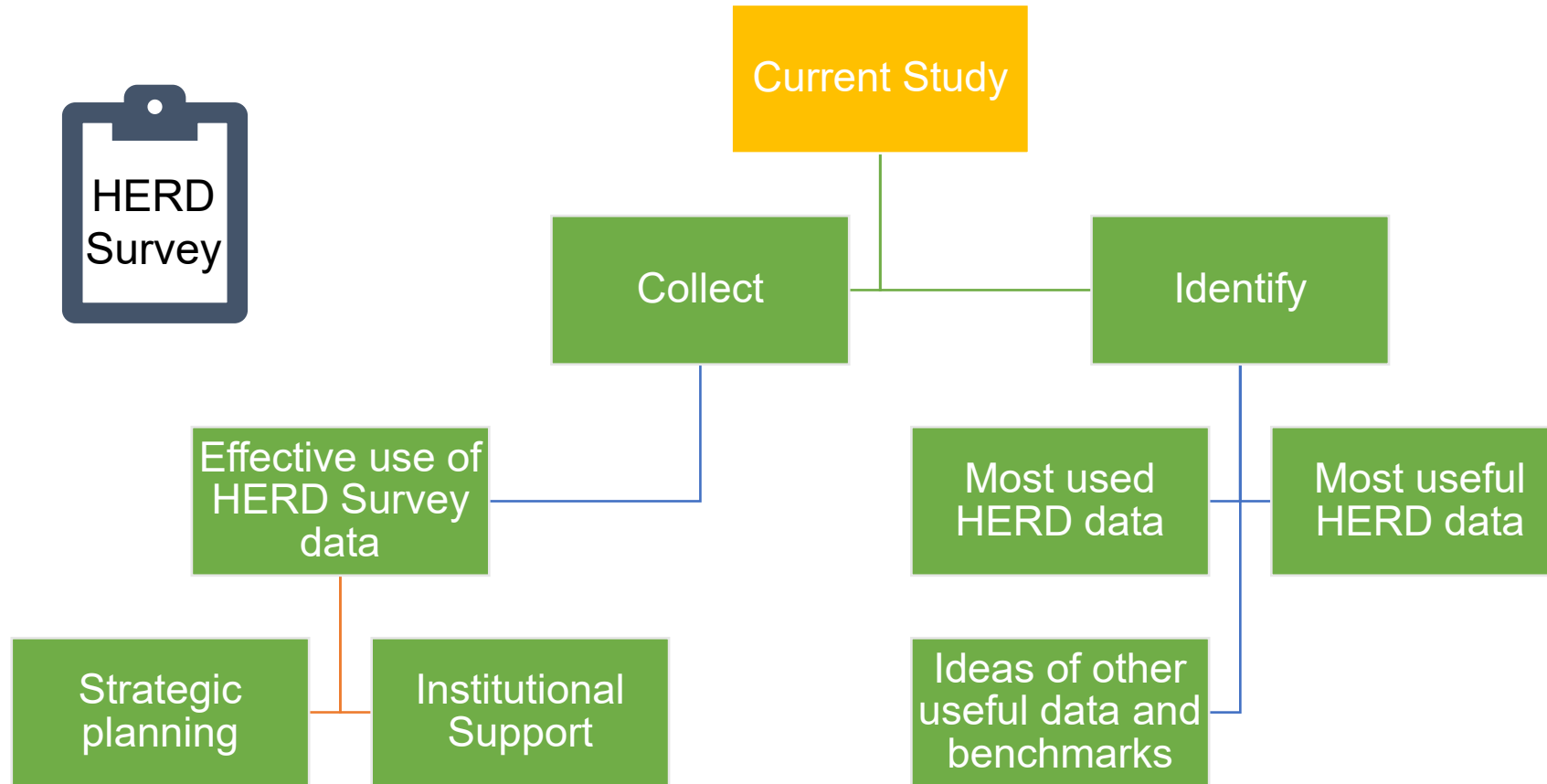
The Project

Research Analytics and Higher
Education Research & Development Survey
(HERD)

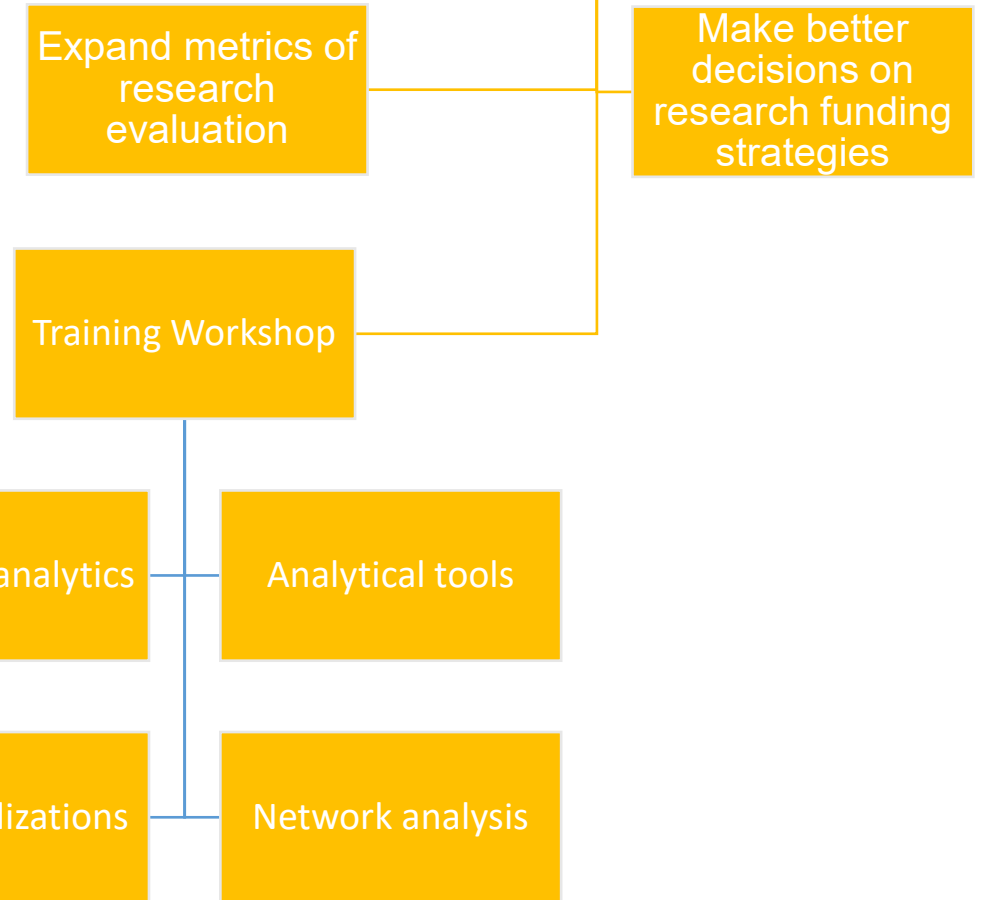




HERD Survey Study



The SCOPE Framework



<https://inorms.net/scope-framework-for-research-evaluation/>

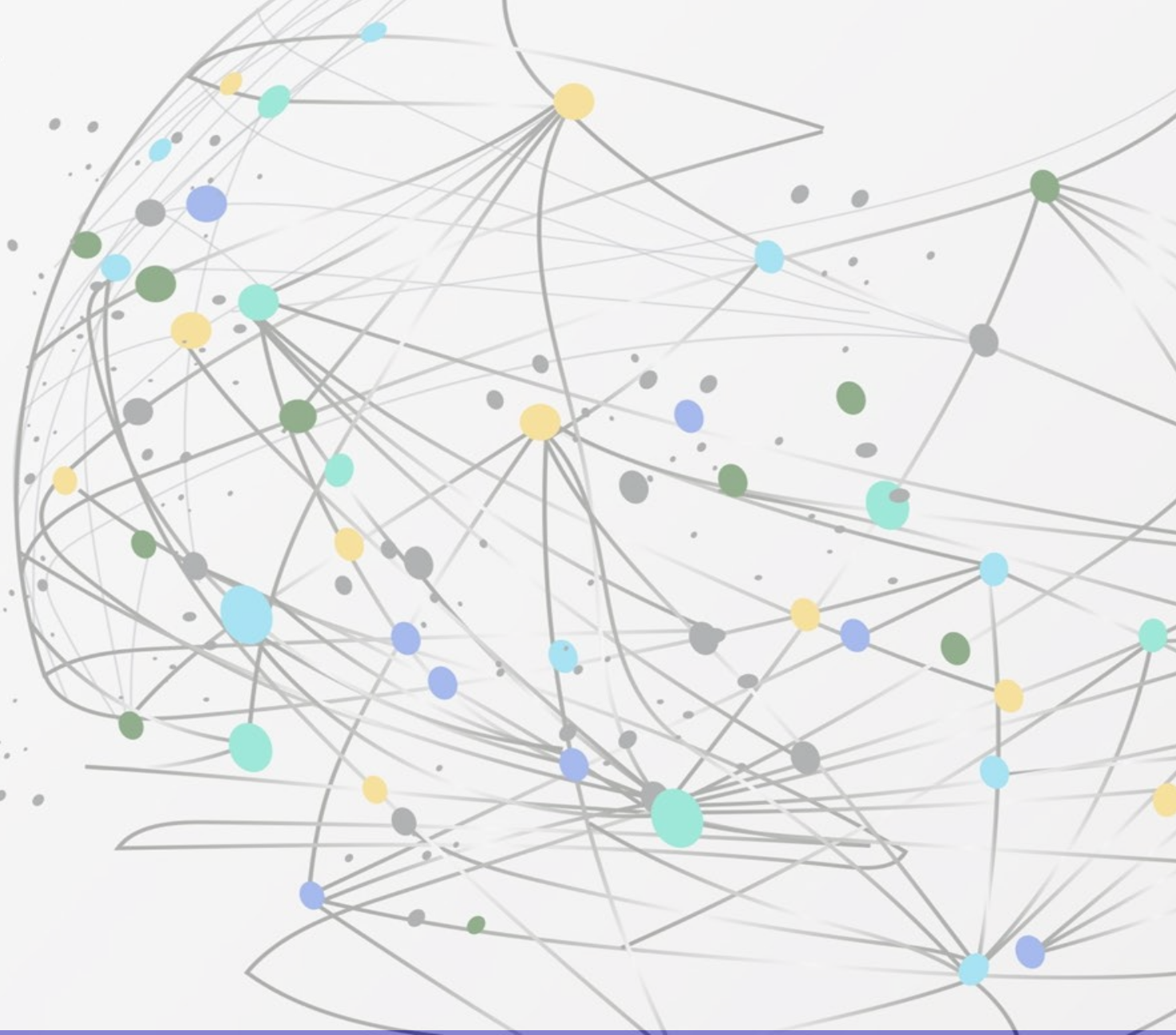
Project Timeline



Research Analytics Capabilities (RAC)

RAC Maturity Model

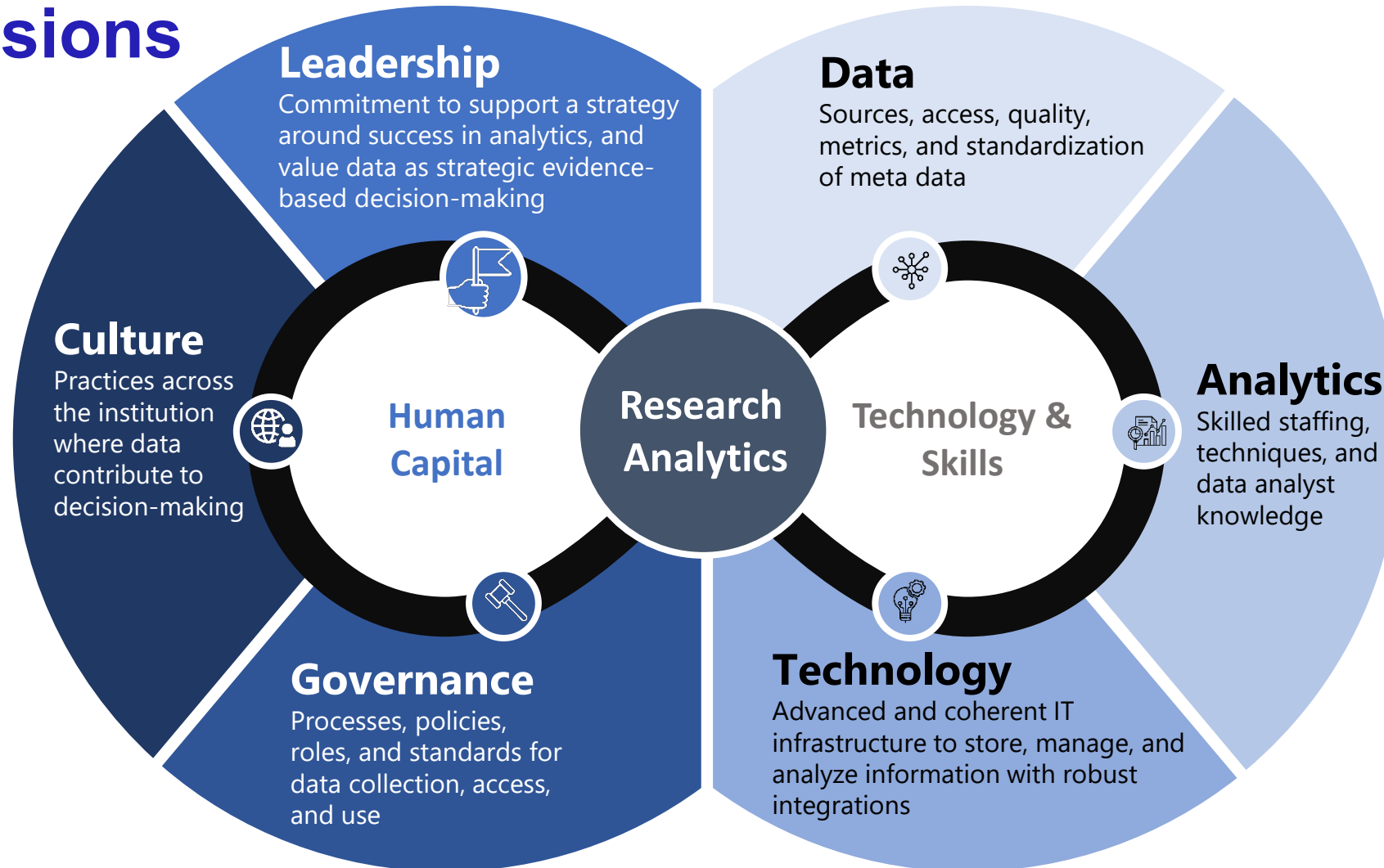
RAC Workforce Survey



Objective

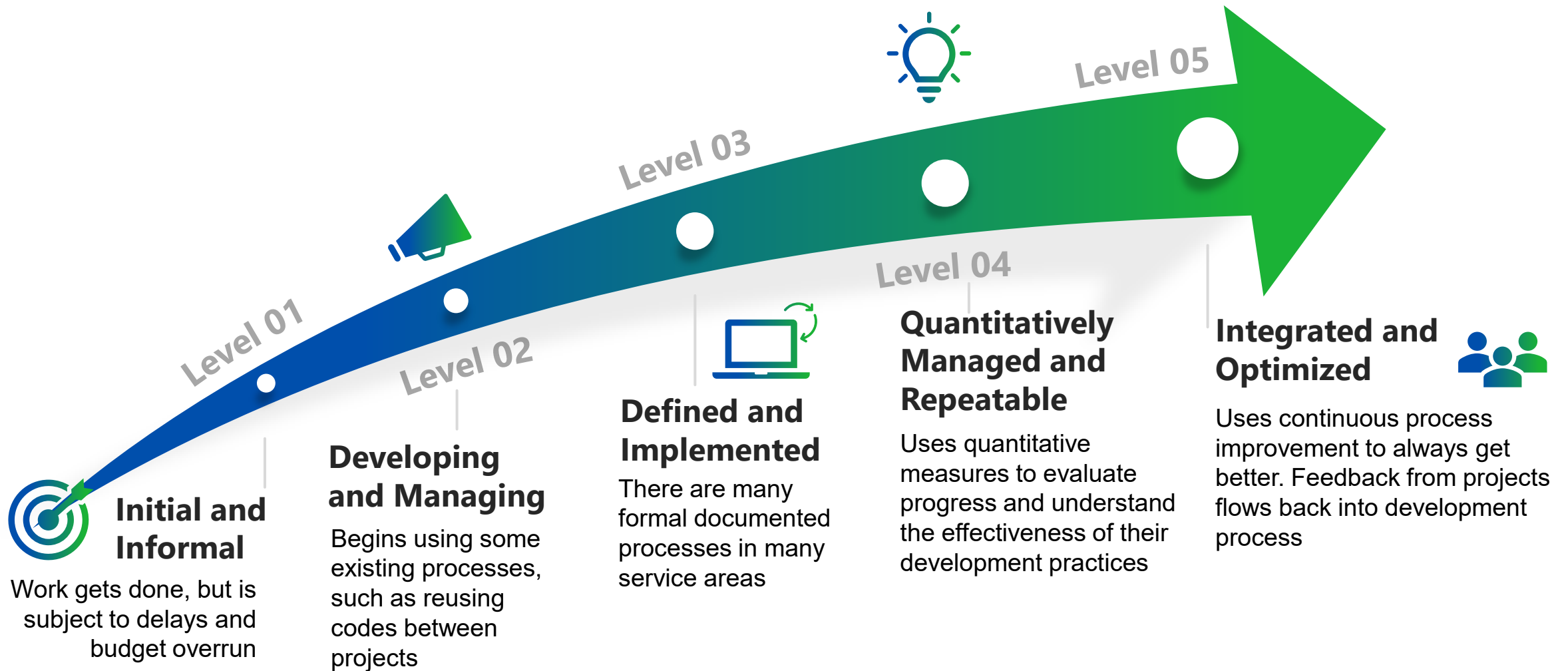
- **Provide tools to help research administration offices:**
 - *Identify areas of focus and improvement*
 - *Set goals and priorities*
 - *Influence and justify resource allocation*
 - *Improve strategic planning and business operations*
 - *Track key aspects of an effective research analytics program*

Dimensions



Conceptual Framework of *Research Analytics Capabilities (RAC)*

RAC Maturity Assessment Arc



A Study of the HERD Survey

Purpose

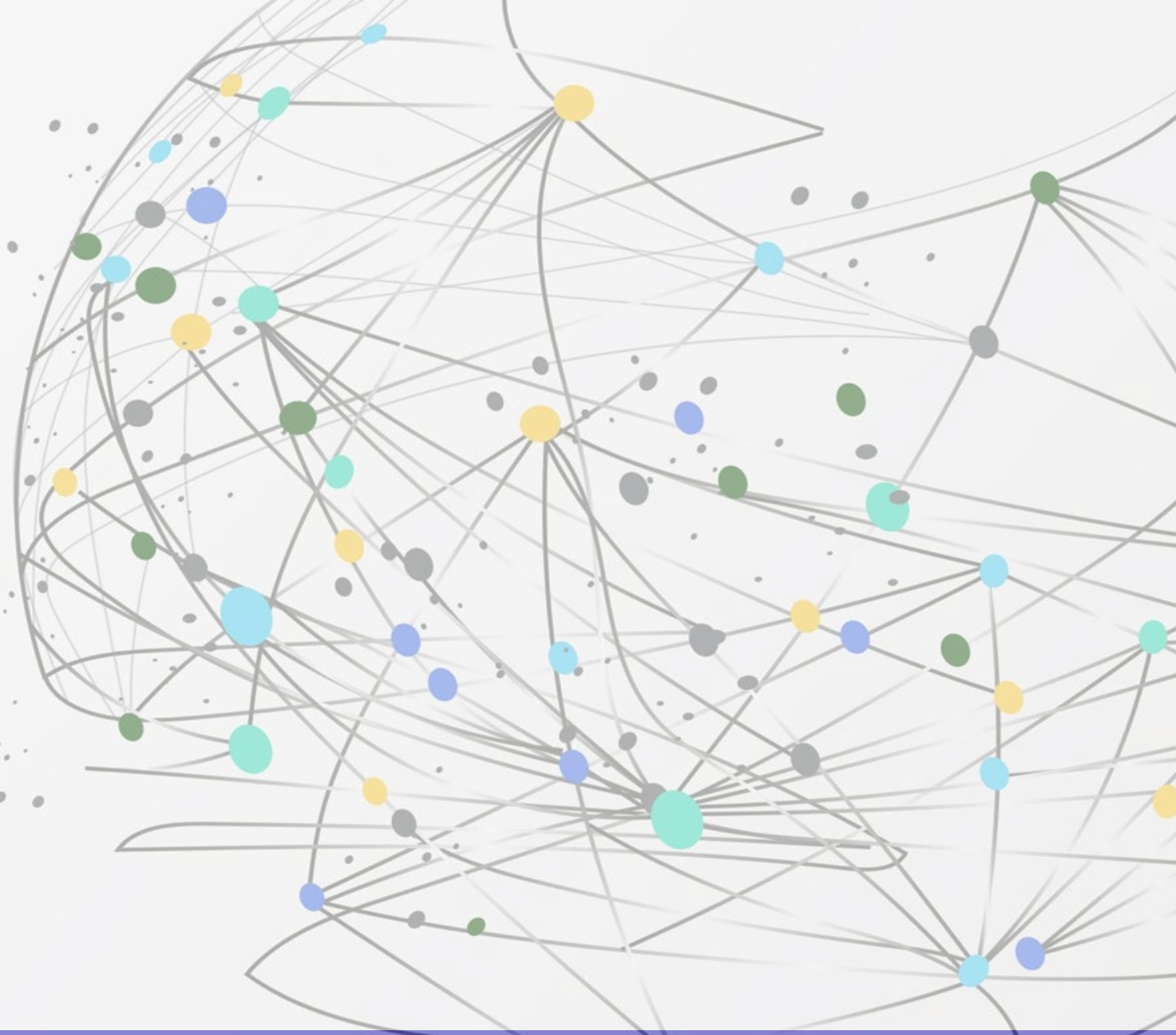
- Gather information on institutions' utilization of HERD Survey results
- Propose best practices to collect data for the HERD Survey

Questions

- Relative ease to complete and usefulness of 16 HERD Survey Questions
- Difficulty of capturing expenses
- Difficulty of calculating responses to questions

Results

- Quality of the RAC scale
- Quantitative survey results
 - RAC survey
 - HERD survey
 - Results utilization
 - Data collection
- Qualitative comment analysis



A complex network diagram with numerous nodes of various colors (blue, green, yellow, cyan, grey) connected by a dense web of grey lines. The nodes are scattered across the right side of the slide, with some larger nodes and more connections in the center-right area. The background is a light grey gradient with some faint, scattered dots.

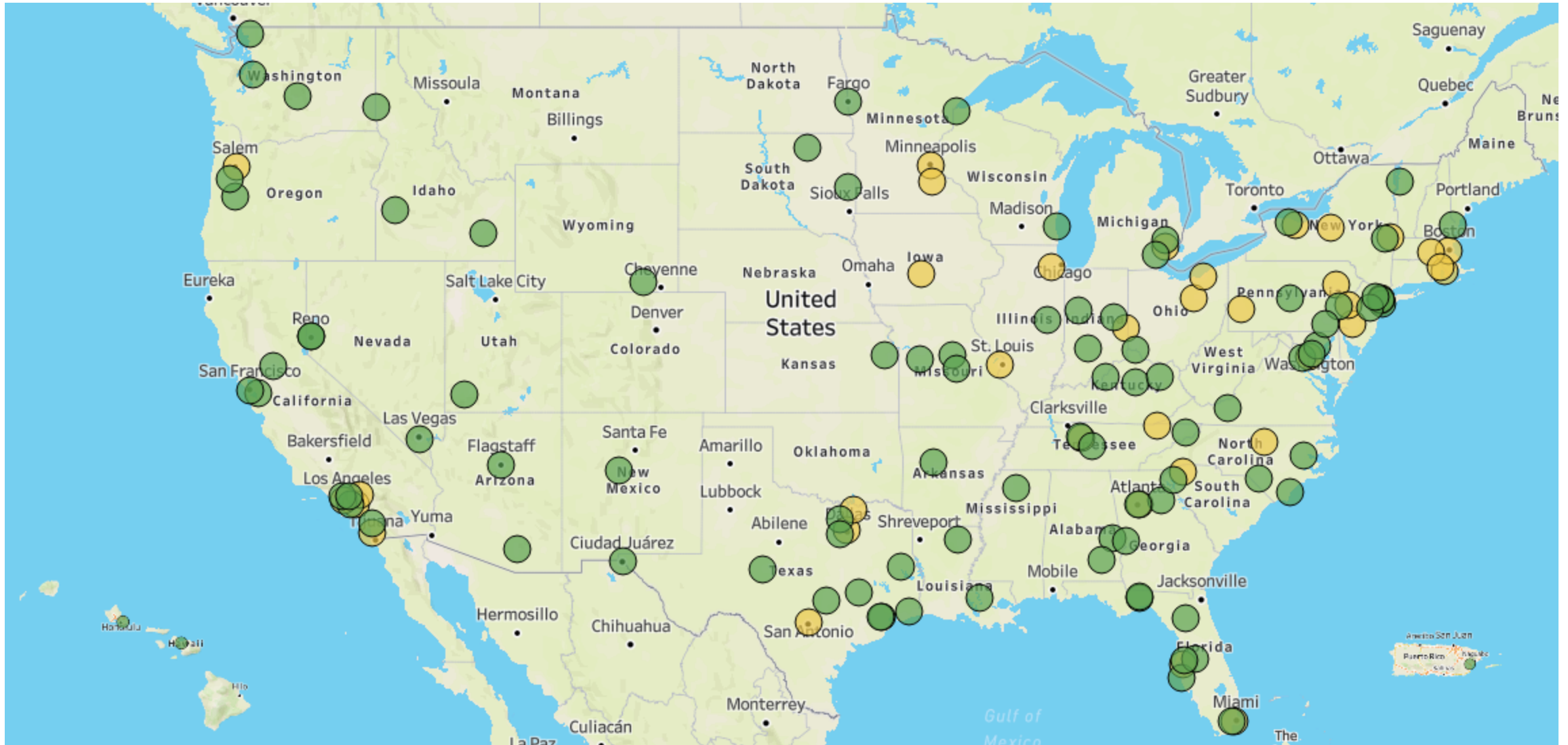
Results - RAC

Survey Validation Results

Survey Respondents

Sector of institution

- Public, 4-year or above
- Private not-for-profit, 4-year or above





Survey Validation Results

- High reliability (persons: 0.92; items: 0.98)
- Presence of a second dimension (eigenvalue: 4.45)
- But dimensions are highly correlated (lowest disattenuated correlation: 0.64)
- A simplified rating scale is recommended
- All survey items function properly

A complex network diagram with numerous nodes of various colors (blue, green, yellow, cyan, grey) connected by thin grey lines. The nodes are scattered across the right side of the slide, with a higher density in the center-right. Some nodes are larger than others, suggesting different weights or importance. The overall structure is a dense web of connections.

Results - RAC

Quantitative Survey Results

RAC - Respondent Demographics

211

respondents

90

comments

The **University of Kentucky Research Analytics Capabilities (UK RAC)** survey was conducted in June 2023.

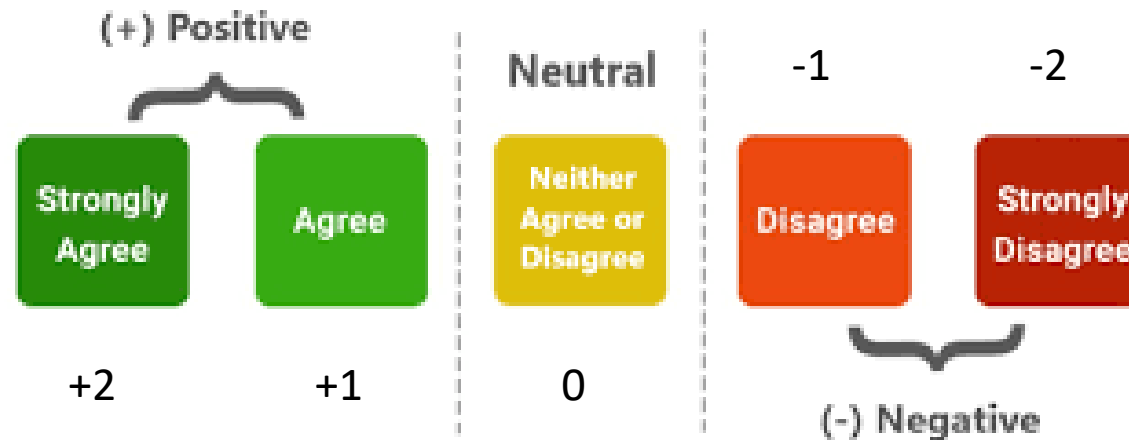
The UK RAC survey was administered through an anonymous online link.

211 research administration professionals responded to the UK RAC survey.

90 (42.7%) of your respondents provided improvement feedback in the comments section.

RAC - Average Response Scores

This survey report includes summaries and demographic comparisons of the UK RAC survey dimensions and statements using average response scores. The average response scores for the 36 statements range from -2 to +2. Their corresponding response options are listed below (for positively-phrased items):



RAC - Overall and Six Dimension Results

RAC Overall (ARS)



*ARS = Average Response Score

Data Dimension ARS



Analytics Dimension ARS



Technology Dimension ARS



Governance Dimension ARS



Culture Dimension ARS



Leadership Dimension ARS



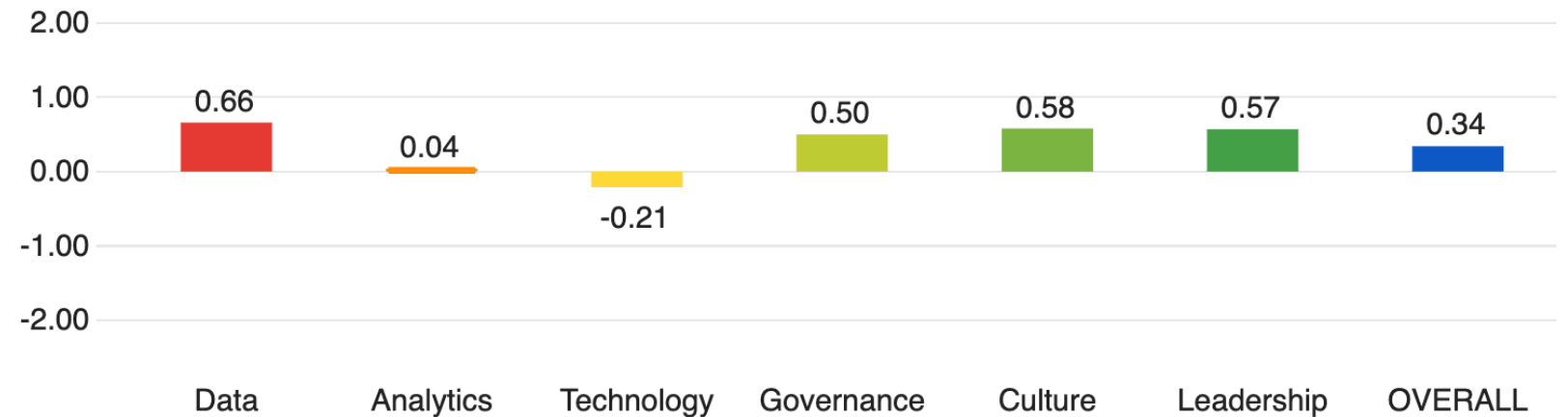
RAC - Overall and Six Dimension Results

RAC Overall (ARS)

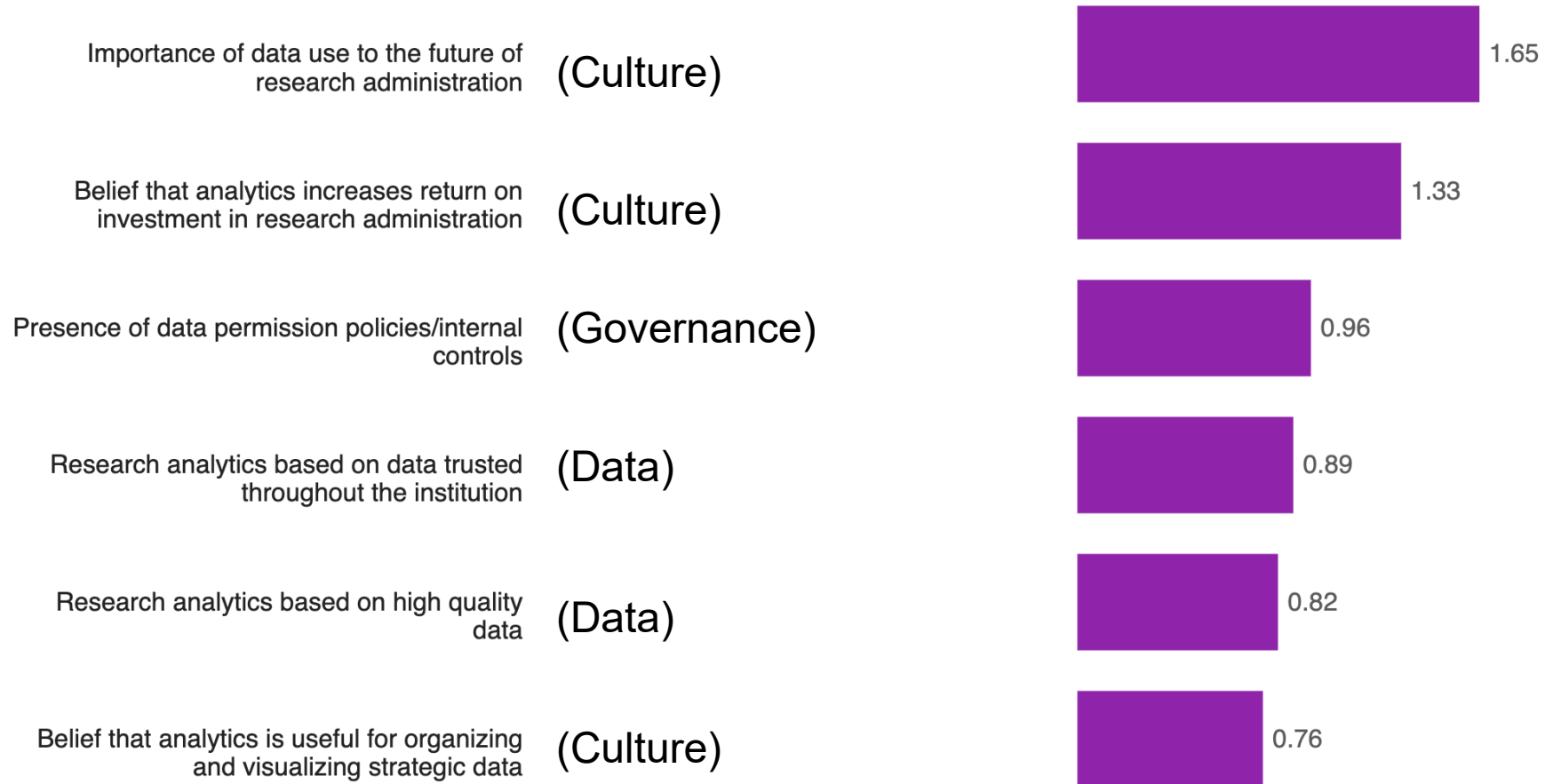


*ARS = Average Response Score

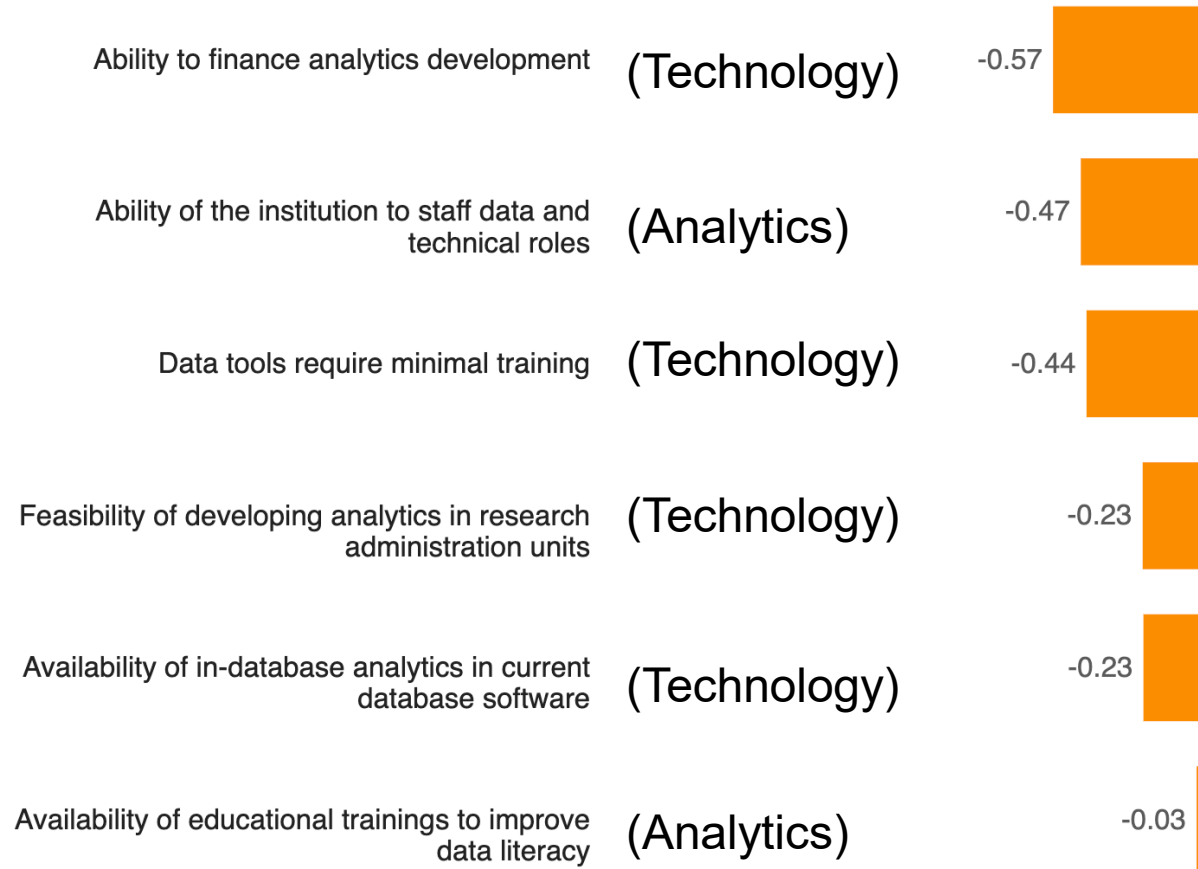
Overall and Six Dimensions Average Response Scores (ARS)



RAC - Top Strengths

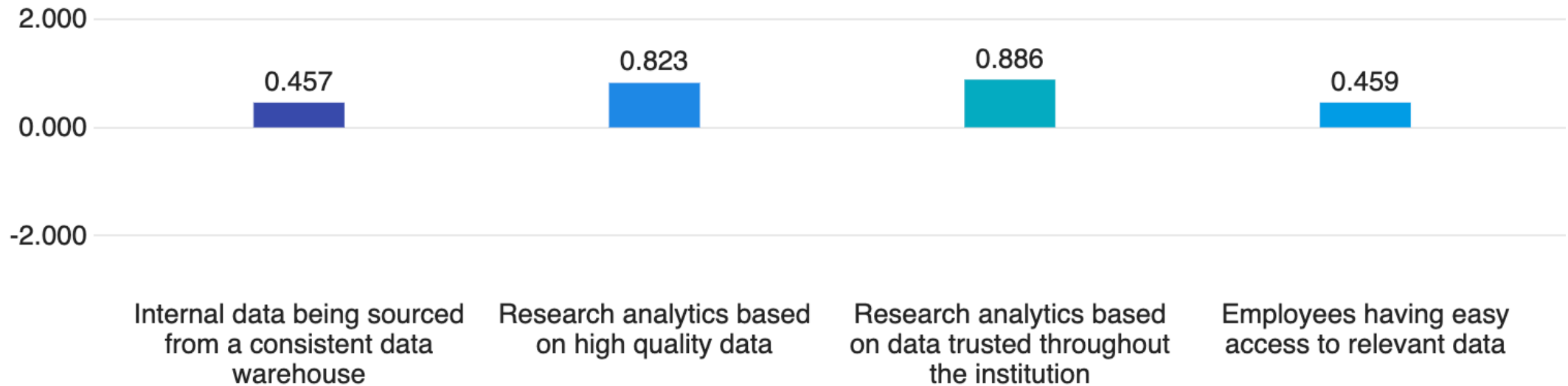


RAC - Growth Priorities



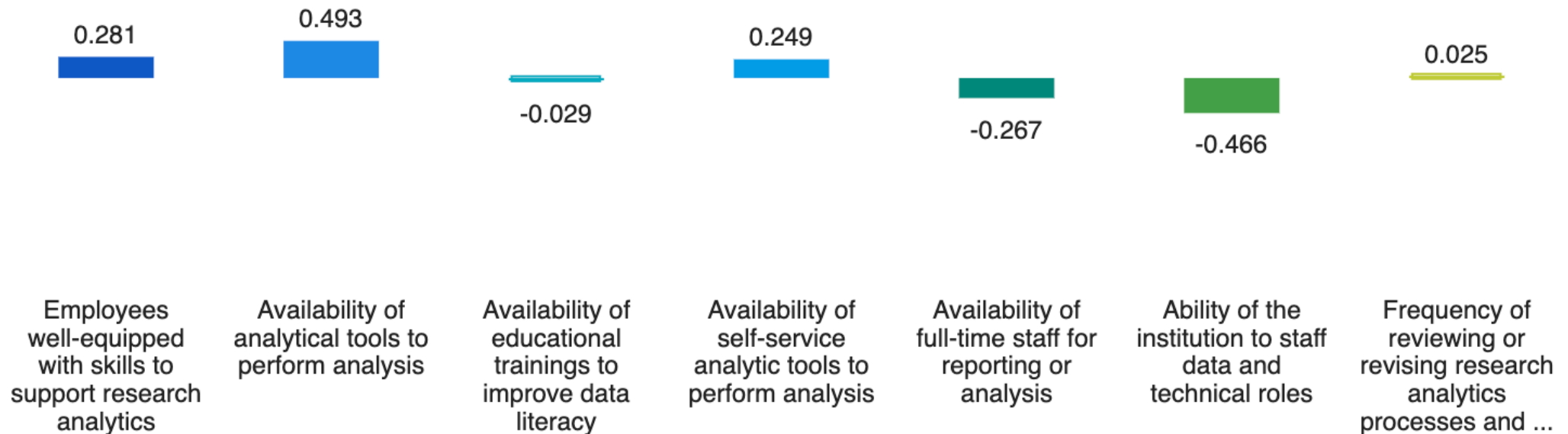
RAC - Data Dimension Results

Average Response Scores (Overall: 0.66)



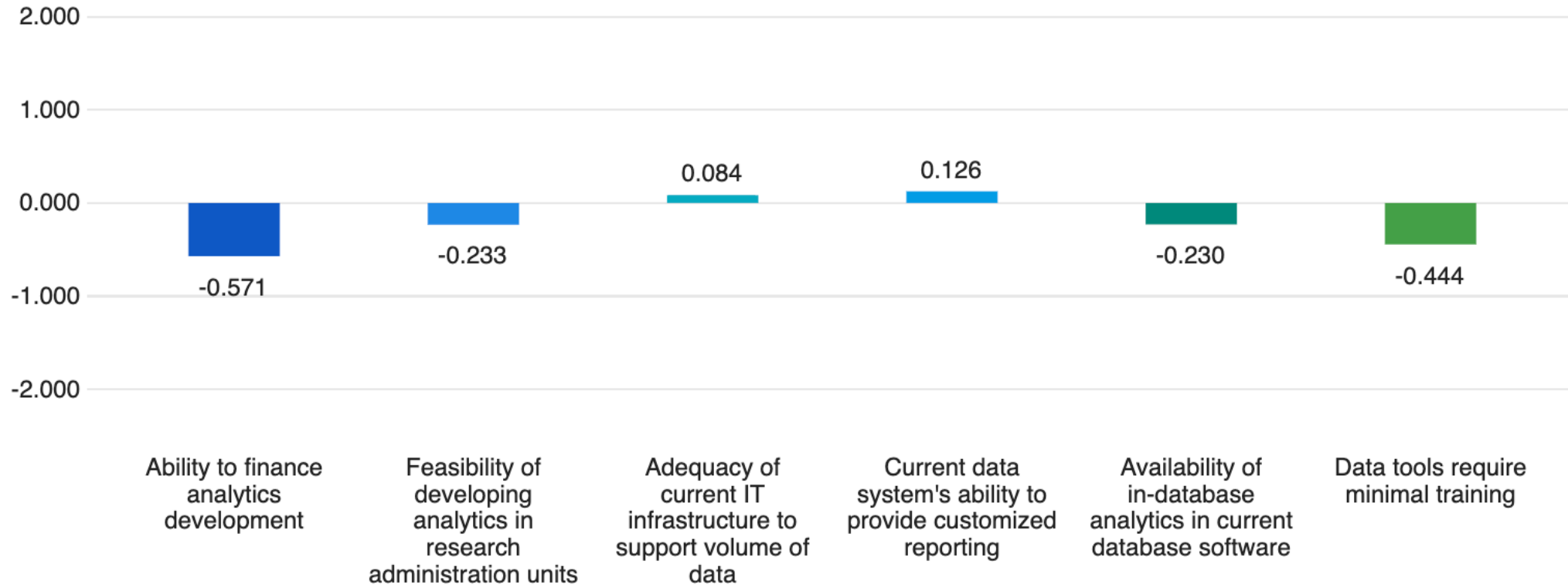
RAC - Analytics Dimension Results

Average Response Scores (Overall: 0.04)



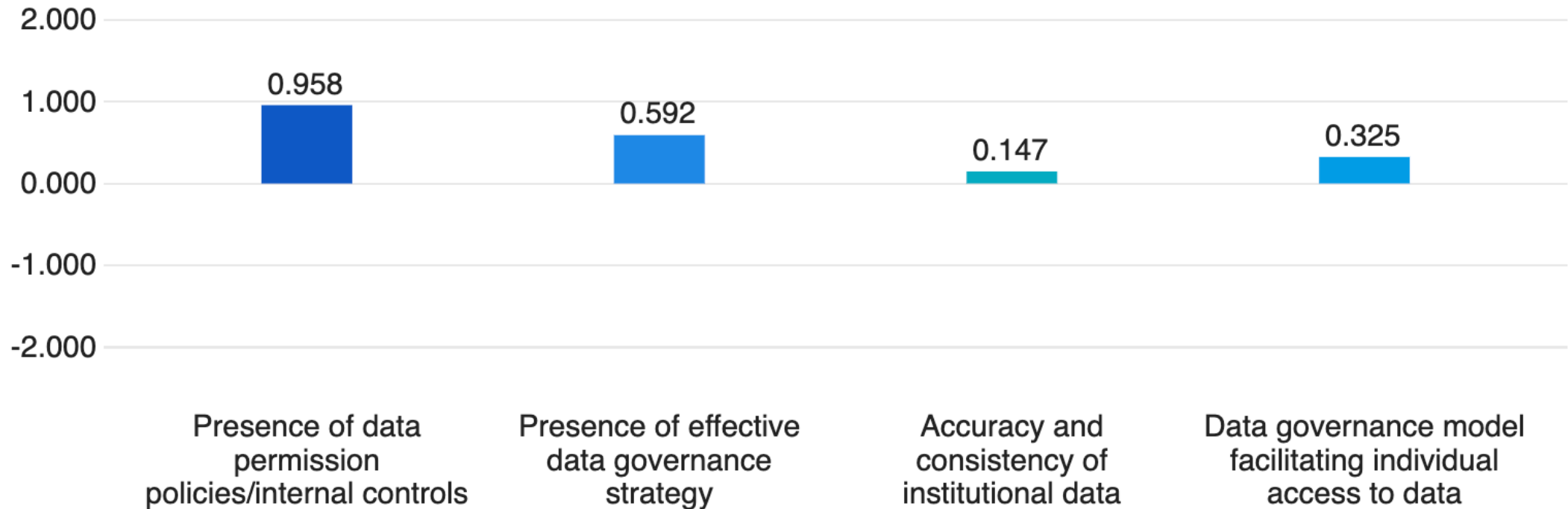
RAC - Technology Dimension Results

Average Response Scores (Overall: -0.21)



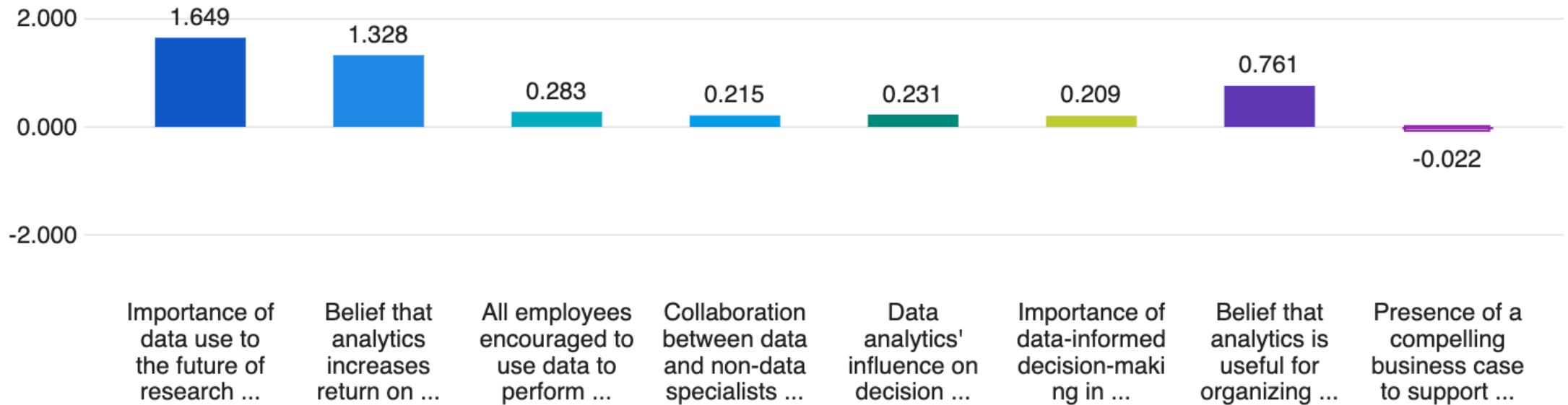
RAC - Governance Dimension Results

Average Response Scores (Overall: 0.50)



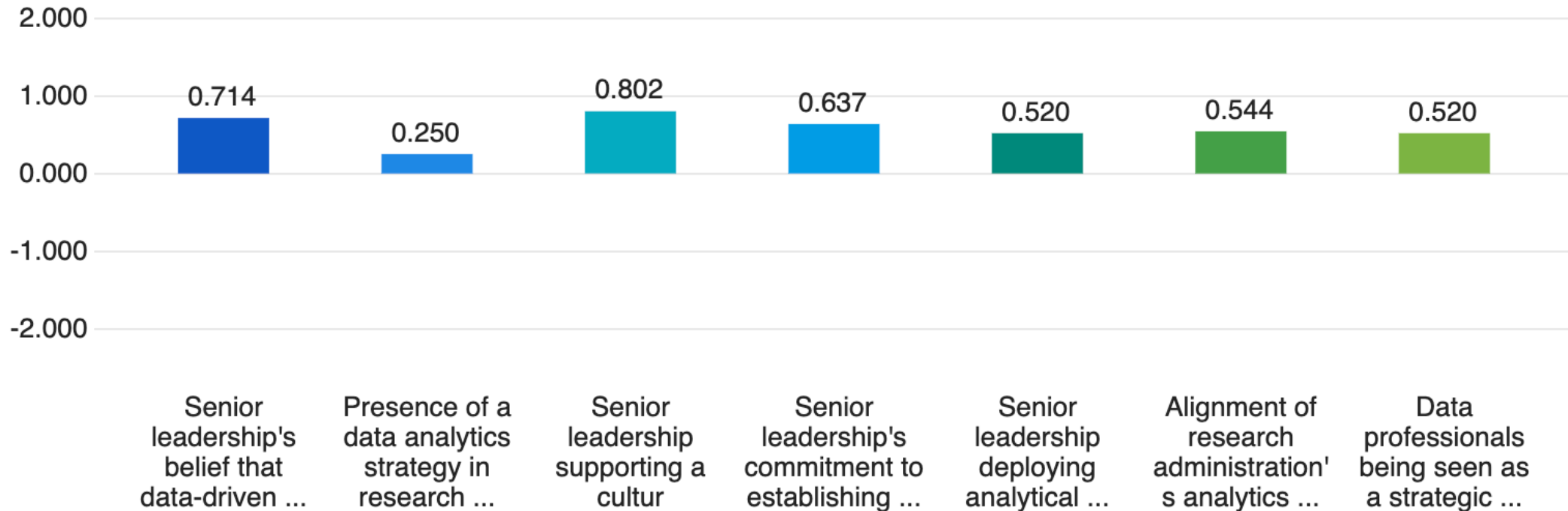
RAC - Culture Dimension Results

Average Response Scores (Overall: 0.58)

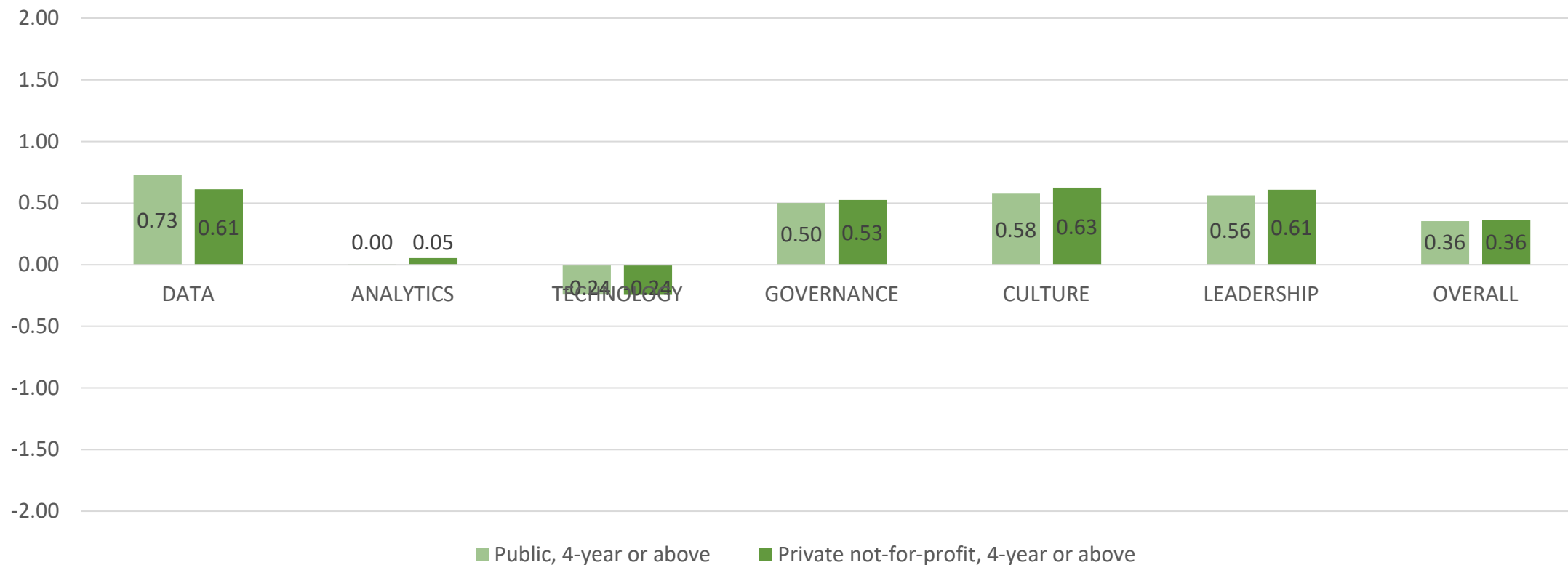


RAC - Leadership Dimension Results

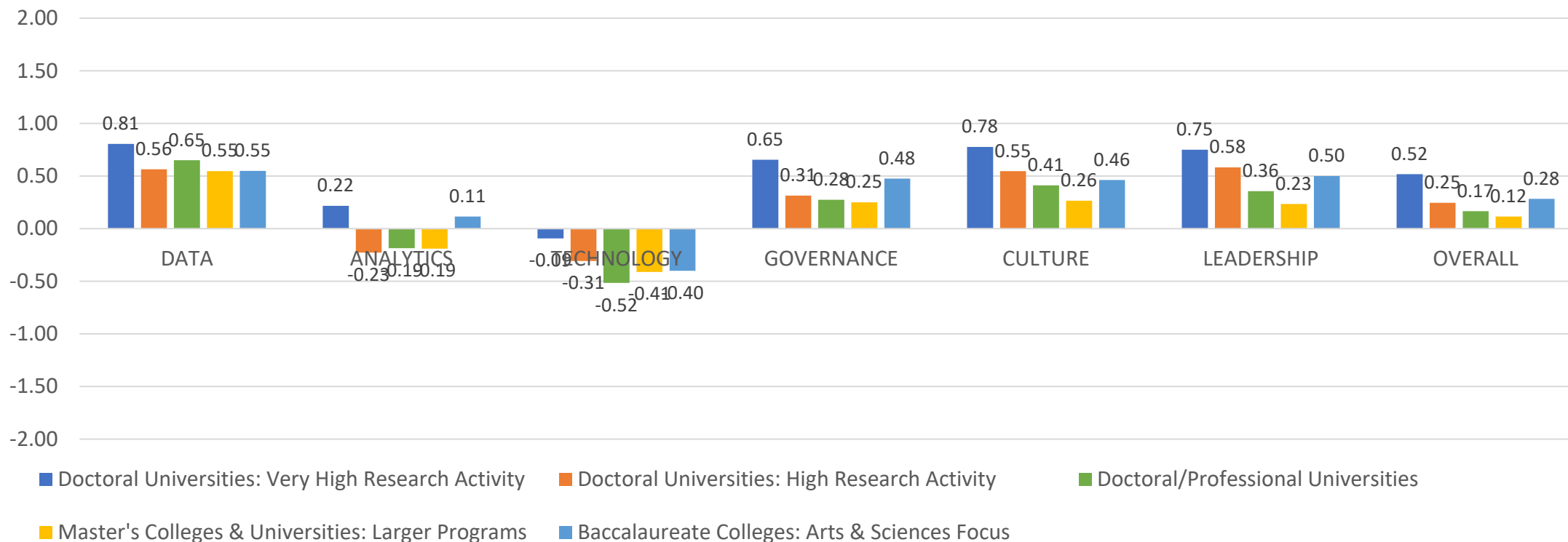
Average Response Scores (Overall: 0.57)



RAC - Comparison by Sector

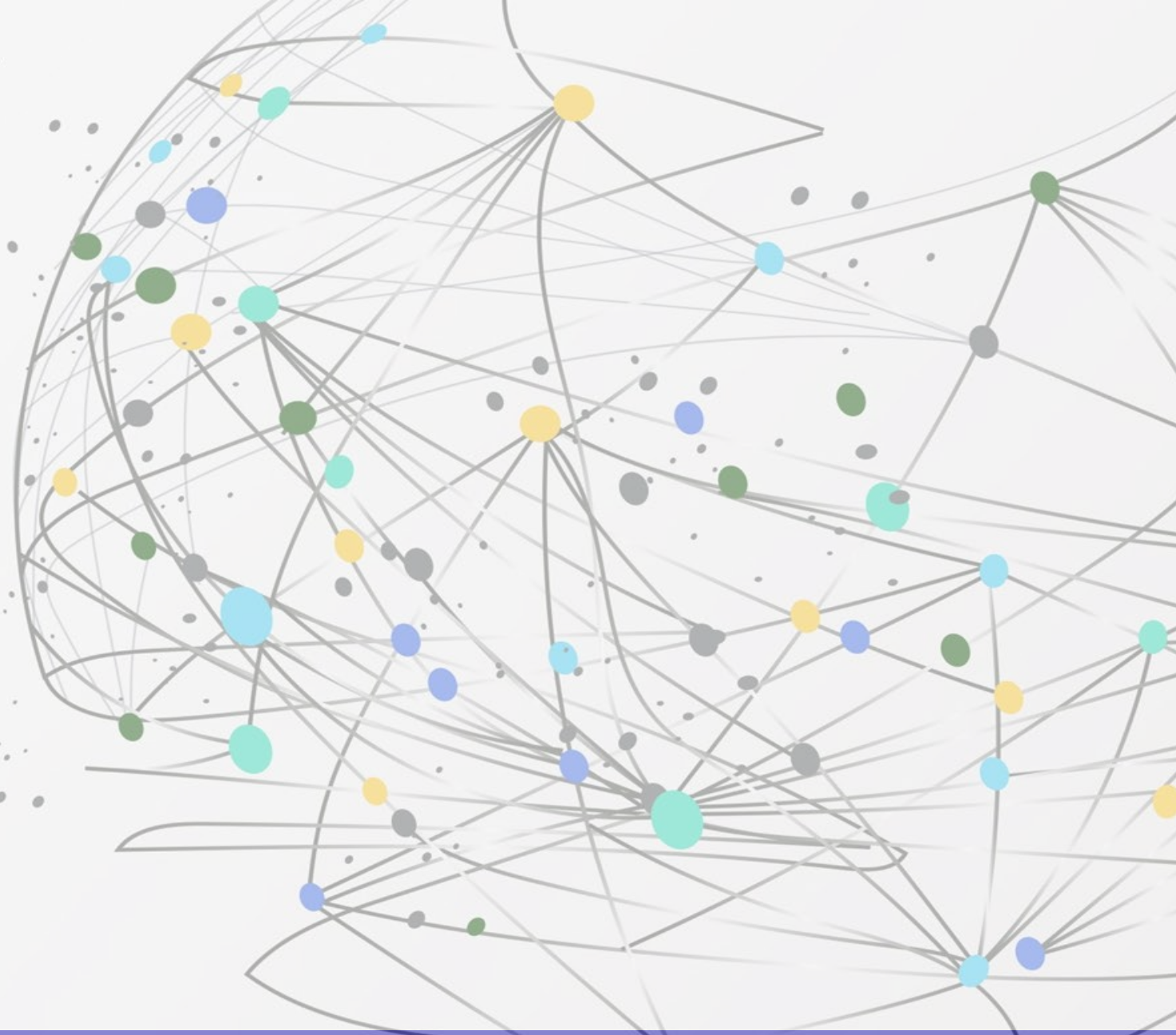


RAC - Comparison by Carnegie Classification 2021



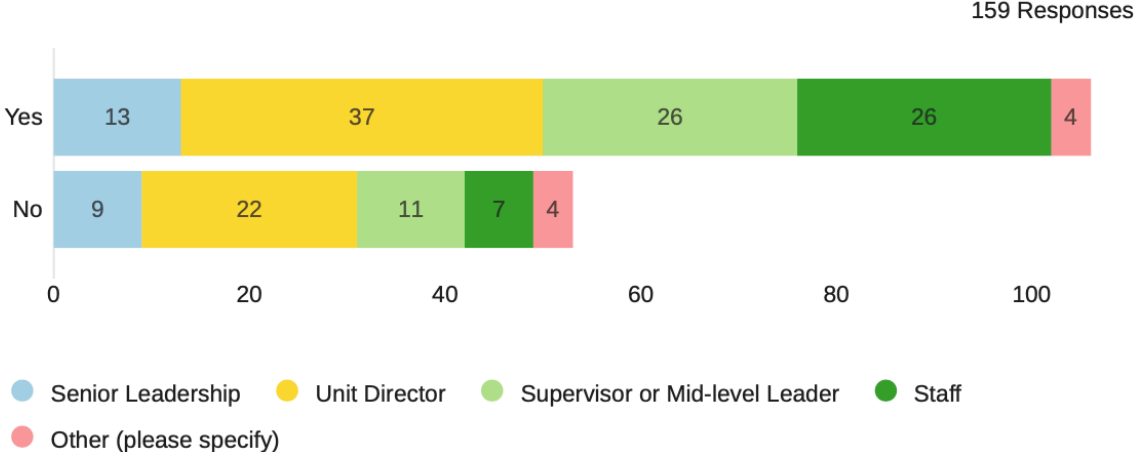
Results - HERD

Quantitative Survey Results



HERD - Descriptive Statistics

Is data collection for HERD Survey part of your position duties?



211

Total no. of responses

116

Responded to HERD Survey
Data Collection Section

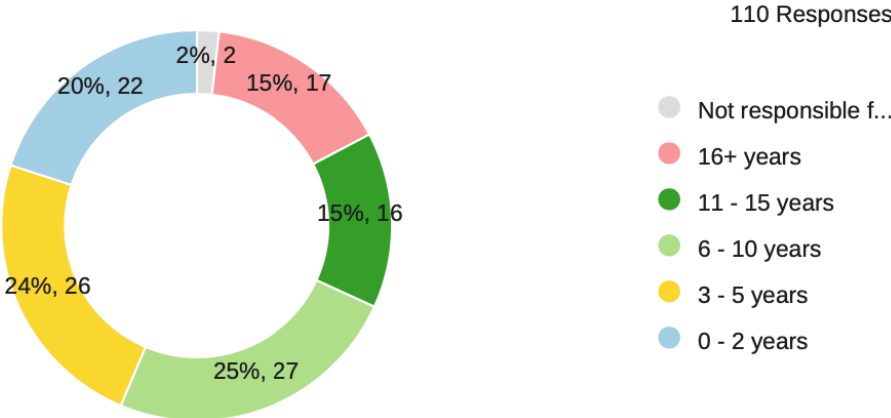
125+

Participating Institutions

41

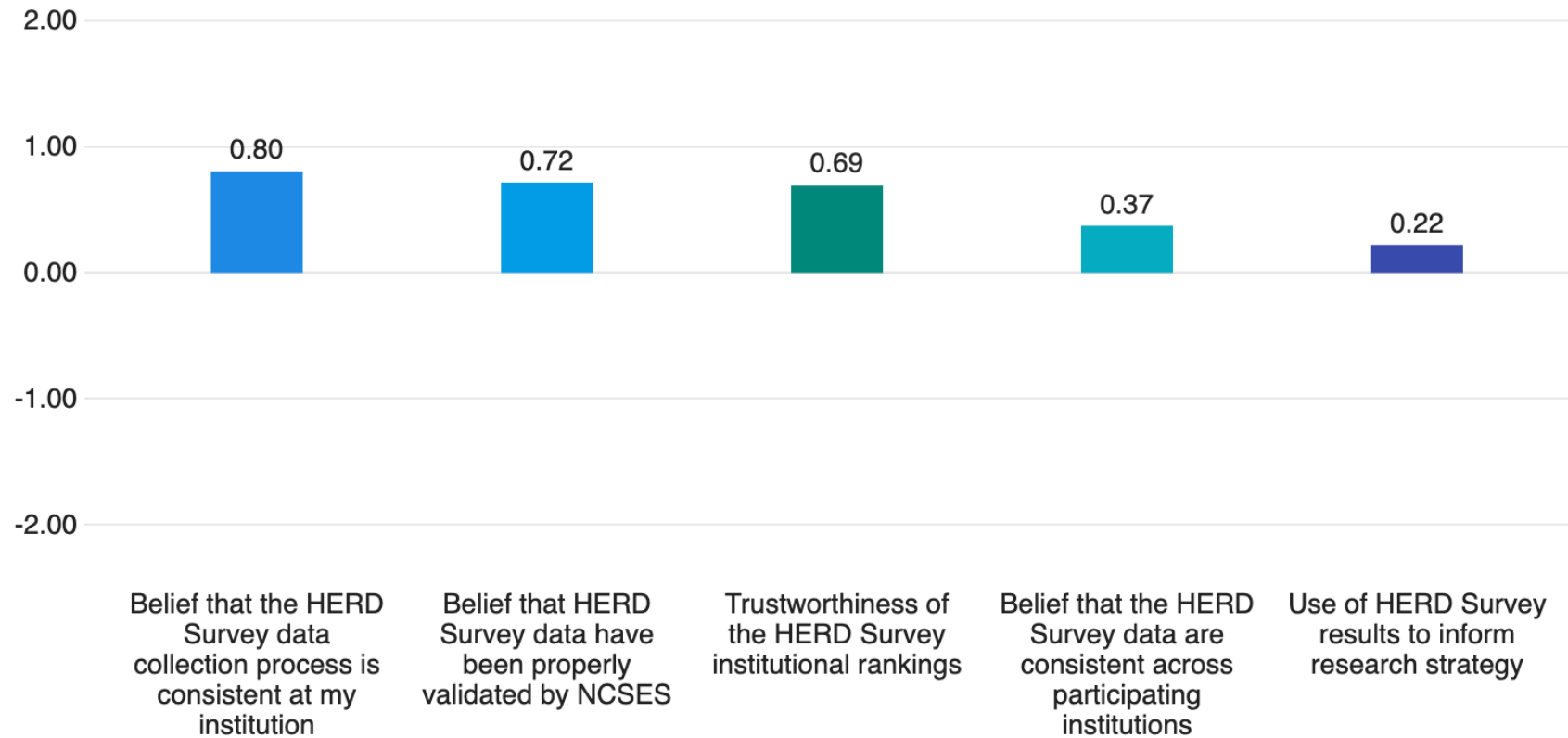
US States (incl. DC)
Surveyed

Respondents' Years of Experience with HERD Survey Data Collection



HERD - Results Utilization

Average Response Scores (Overall: 0.56) (ranging from -2 = Strongly Negative to +2 = Strongly Positive)



HERD - Data Collection

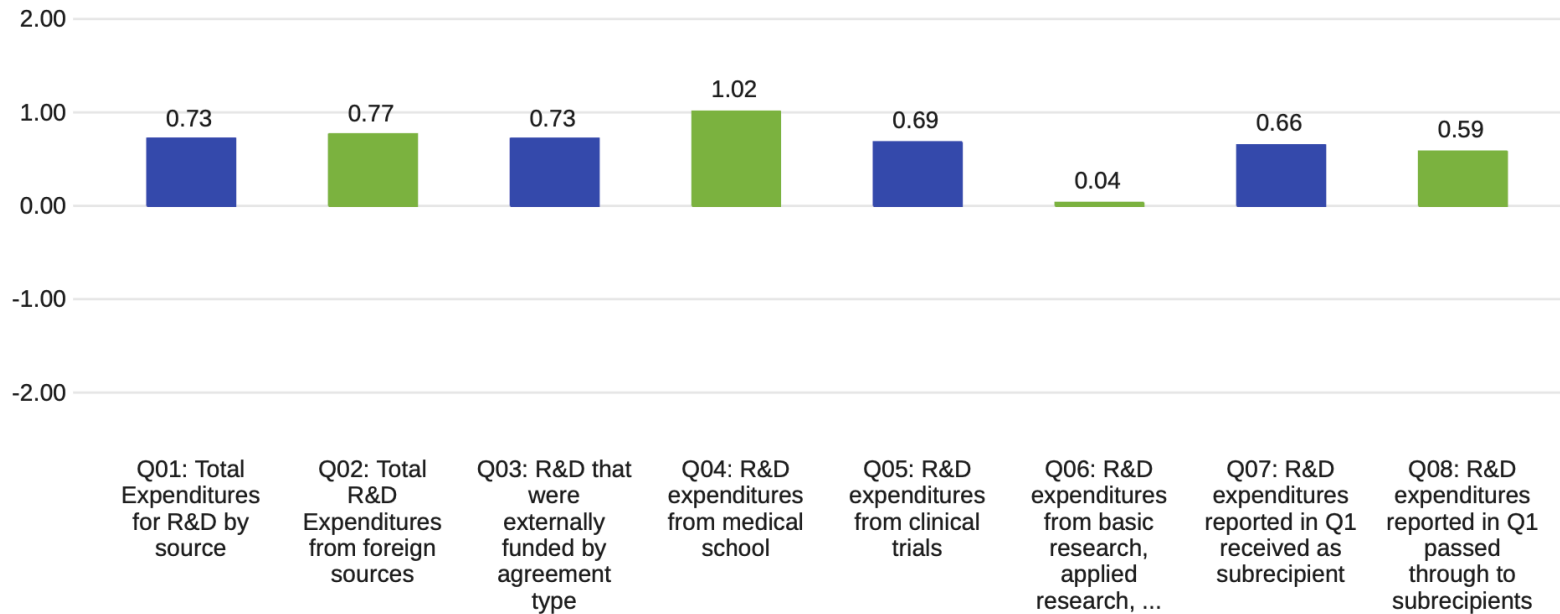
Average Response Scores (Overall: 0.34) (ranging from -2 = Strongly Negative to +2 = Strongly Positive)

Field	Mean
HERD data collection form provides clear definitions of key terms	0.76
Institutions' accounting system effective differentiating between R&D and non R&D expenditures	0.73
Senior leadership placing high priority in compiling accurate responses for HERD Survey	0.72
Institution's accounting system effectively documenting institutional funds and cost sharing	0.68
Primary data system allowing for accurate dollar amount calculations	0.66
The work of HERD Survey data collection personnel valued by institution	0.57
HERD data collection staff having the right data analytics tools to gather the data	0.53
Collaborations between units to provide and evaluate comprehensive responses for HERD questions	0.44
NCSES providing adequate training and support for HERD Survey data collection	0.35
Data allowing for ease and accuracy of unrecovered indirect cost calculations	0.22
Accessibility of HERD data from the primary data system	0.21
Accessibility of the data required for completing the HERD Survey	-1.07

HERD - Ease to Complete (Q01 - Q08)

16 HERD Survey Questions: Degree of Ease to Complete (Q01 - Q08)

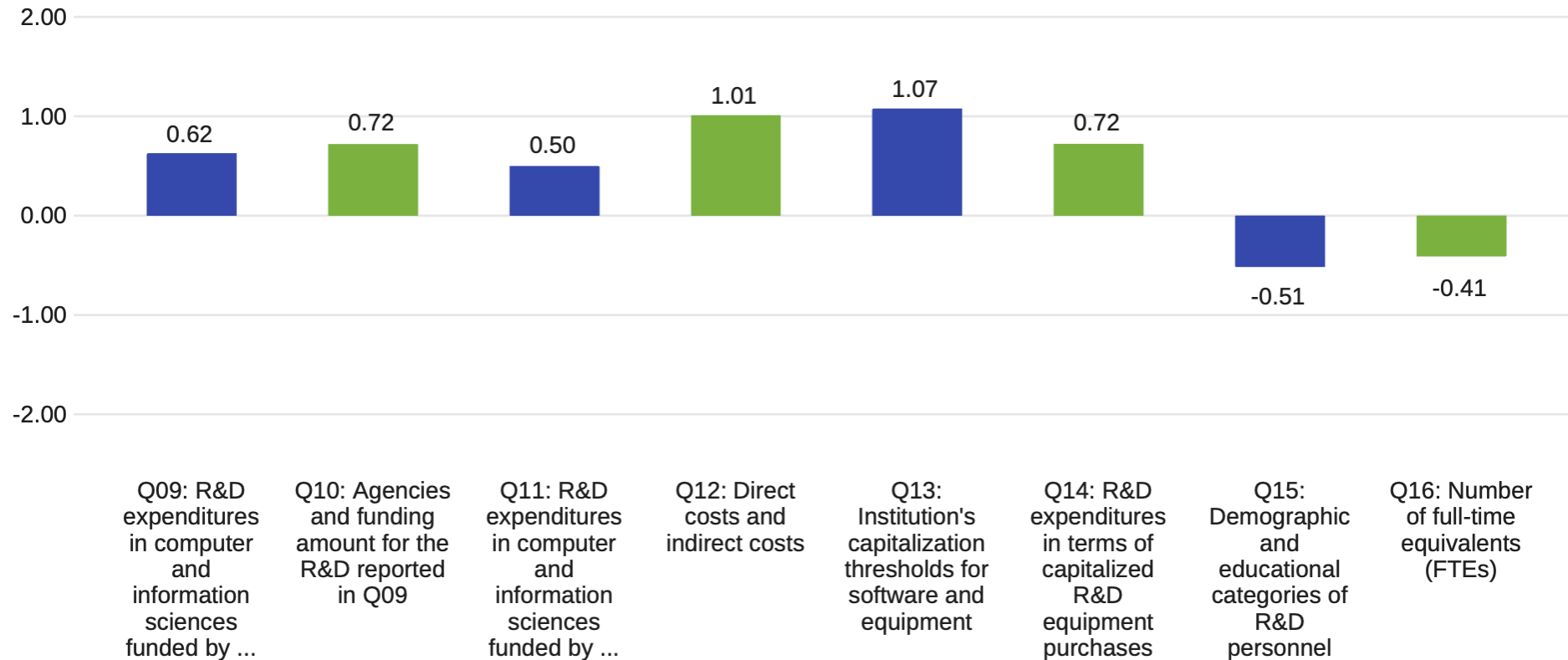
115 Responses



HERD - Ease to Complete (Q09 - Q16)

16 HERD Survey Questions: Degree of Ease to Complete (Q09 - Q16)

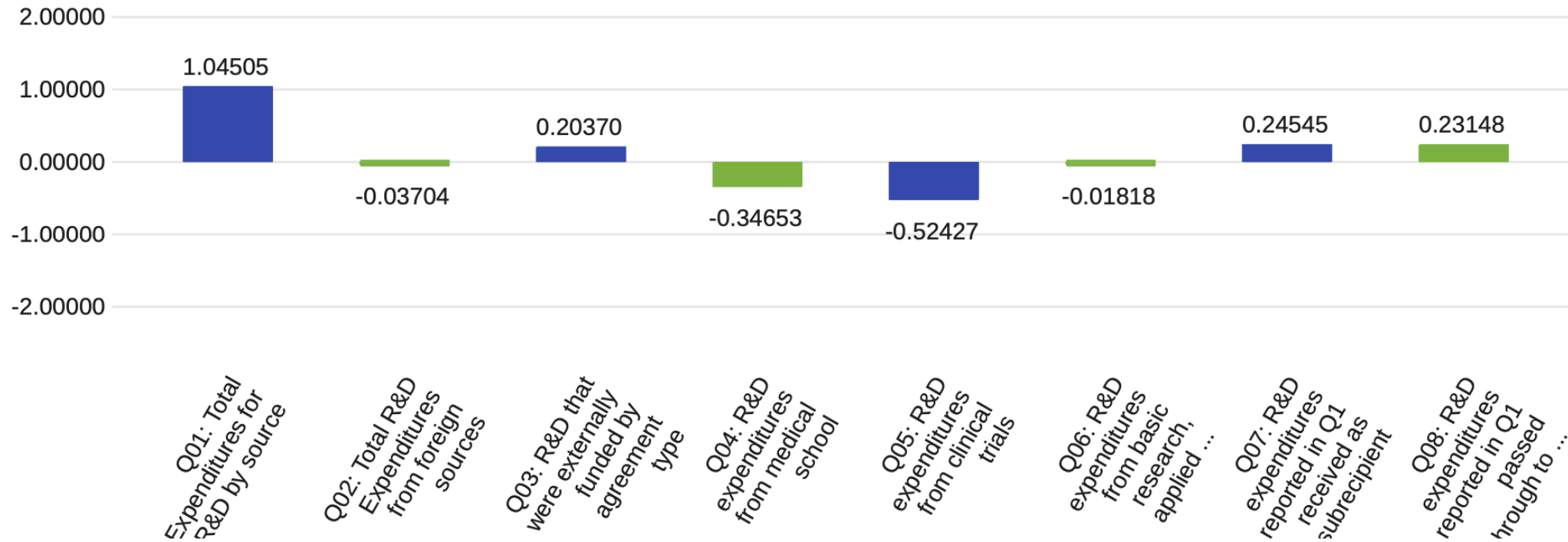
115 Responses



HERD - Usefulness (Q01 - Q08)

16 HERD Survey Questions: Degree of Usefulness (Q01 - Q08)

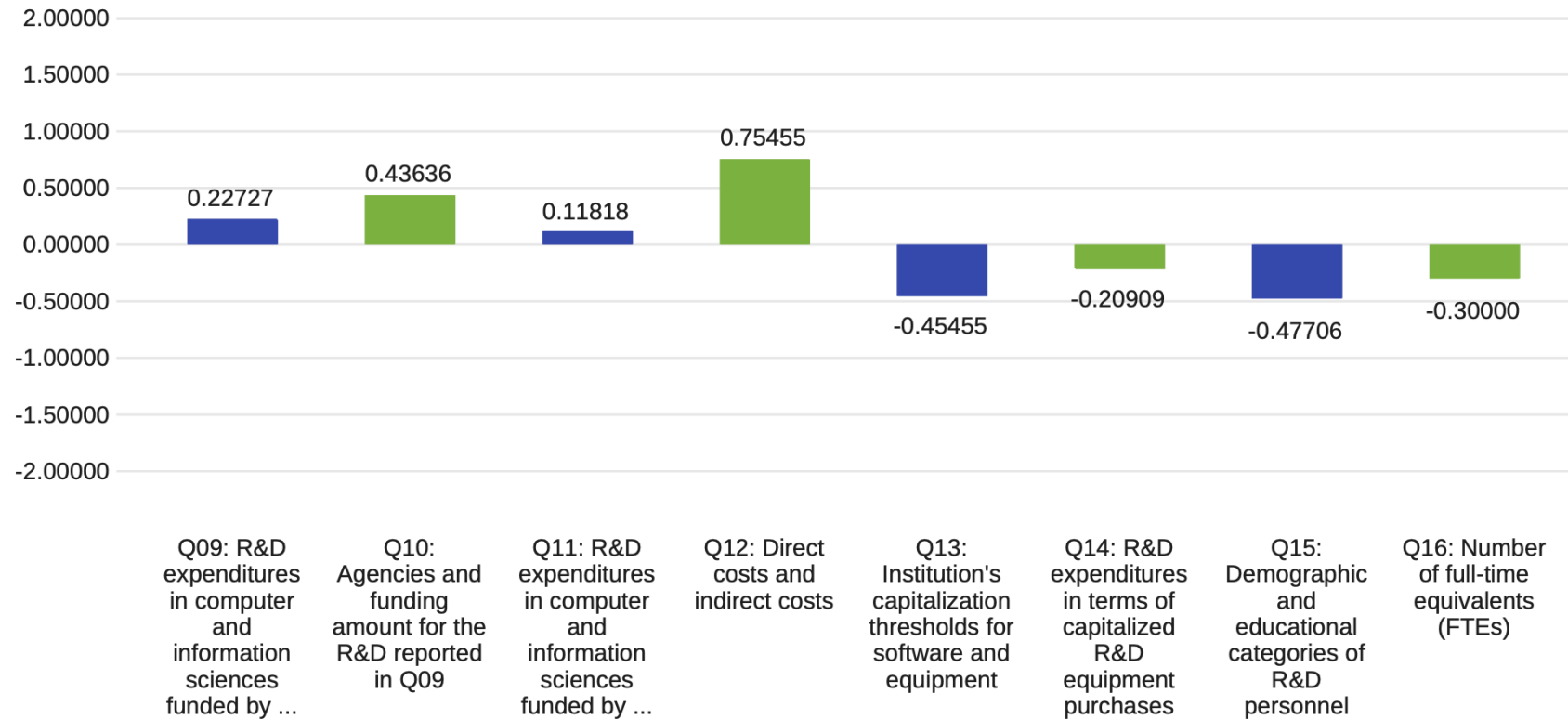
111 Responses



HERD - Usefulness (Q09 - Q16)

16 HERD Survey Questions: Degree of Usefulness (Q09 - Q16)

111 Responses



Thank you!

Any questions?

Q and A



Contact

baron.wolf@uky.edu

katherine.Robershaw@uky.edu