

University of Kentucky

UKnowledge

Preventive Medicine and Environmental Health
Presentations

Preventive Medicine and Environmental Health

August 2011

Preventive Medicine Introduction

F. Douglas Scutchfield MD

University of Kentucky, scutch@uky.edu

Follow this and additional works at: https://uknowledge.uky.edu/pmeh_present



Part of the [Education Commons](#), [Life Sciences Commons](#), [Medicine and Health Sciences Commons](#), and the [Social and Behavioral Sciences Commons](#)

[Right click to open a feedback form in a new tab to let us know how this document benefits you.](#)

Repository Citation

Scutchfield, F. Douglas MD, "Preventive Medicine Introduction" (2011). *Preventive Medicine and Environmental Health Presentations*. 7.

https://uknowledge.uky.edu/pmeh_present/7

This Presentation is brought to you for free and open access by the Preventive Medicine and Environmental Health at UKnowledge. It has been accepted for inclusion in Preventive Medicine and Environmental Health Presentations by an authorized administrator of UKnowledge. For more information, please contact UKnowledge@lsv.uky.edu.

Preventive Medicine Introduction

F. Douglas Scutchfield, M.D.

Peter P. Bosomworth

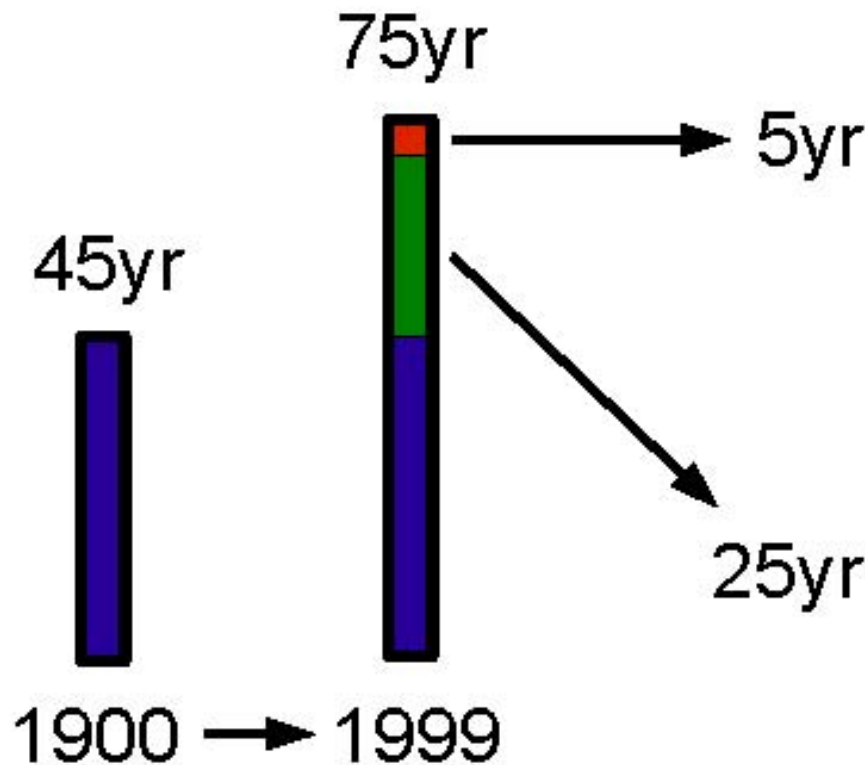
Professor of Health Services
Research and Policy

University of Kentucky
College of Public Health



August 29, 2011

Life Expectancy in 1900 vs 1999



Traditional Medicine
e.g., medications
e.g., procedures
e.g., surgeries
e.g., devices

**Preventive Medicine
and Public Health**
e.g., vaccinations
e.g., clean drinking water
e.g., safe workplaces
e.g., motor vehicle safety

CDC. *MMWR* 1999;48(12);241-243.

What Is Public Health?



World Health Organization



Robert Wood Johnson Foundation



CABINET FOR HEALTH AND FAMILY SERVICES
DEPARTMENT FOR PUBLIC HEALTH

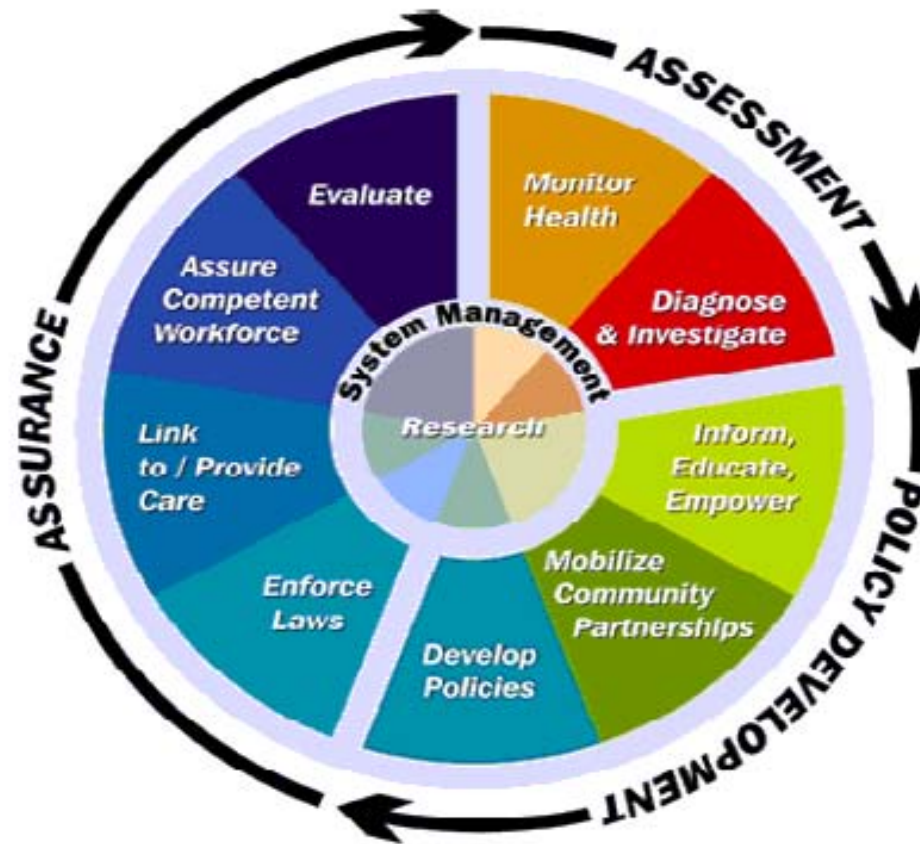
Public Health Mission

*fulfilling society's interest in
assuring conditions in which
people can be healthy*



INSTITUTE OF MEDICINE
OF THE NATIONAL ACADEMIES

Public Health Functions



CDC: National Public Health Performance Standards Program

What Is Preventive Medicine?



prevention-focused
rather than treatment



population-based
rather than individual



Public Health Achievements – I

- Vaccination
- Motor-vehicle safety
- Safer workplaces
- Control of infectious diseases
- Decline in deaths from coronary heart disease and stroke

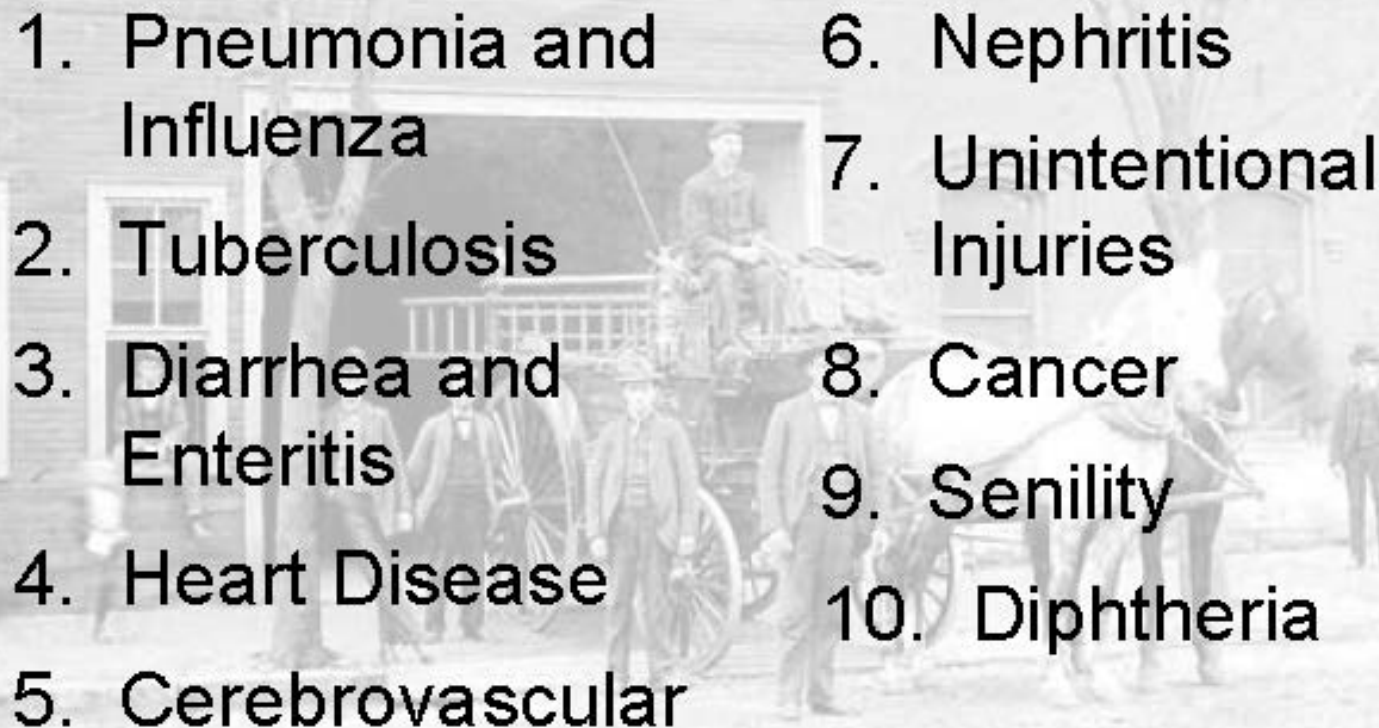


Public Health Achievements – II

- Safer and healthier foods
- Healthier mothers and babies
- Family planning
- Fluoridation of drinking water
- Recognition of tobacco use as a health hazard



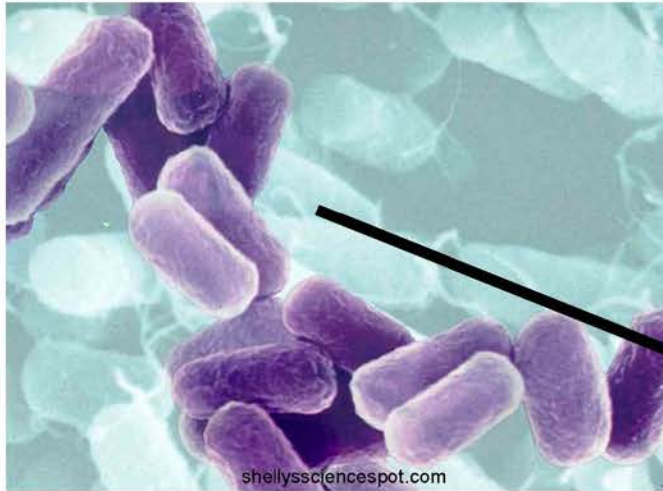
Leading Causes of Death in 1900

- 
1. Pneumonia and Influenza
 2. Tuberculosis
 3. Diarrhea and Enteritis
 4. Heart Disease
 5. Cerebrovascular
 6. Nephritis
 7. Unintentional Injuries
 8. Cancer
 9. Senility
 10. Diphtheria

Leading Causes of Death in 2007

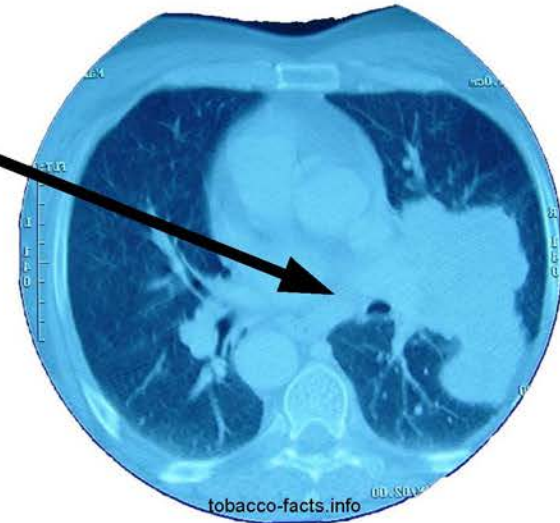
1. Heart Disease
2. Cancer
3. Cerebrovascular
4. Chronic Lower Respiratory Diseases
5. Unintentional Injuries
6. Alzheimer's
7. Diabetes
8. Pneumonia and Influenza
9. Nephritis and Nephrosis
10. Septicemia

Causes of Death: 1900 → 2010



ACUTE

CHRONIC



Actual Causes of Death in 2000

1. Tobacco
435,000 (18.1%)



2. Poor diet and physical inactivity
400,000 (16.6%)

3. Alcohol consumption
85,000 (3.5%)

4. Microbial agents
75,000 (3.1%)



Copyright 2003 by Randy Glasbergen.
www.glasbergen.com



“What fits your busy schedule better, exercising one hour a day or being dead 24 hours a day?”

Actual Causes of Death in 2000



5. Toxic agents	55,000 (2.3%)
6. Motor vehicle	43,000 (1.8%)
7. Firearms	29,000 (1.2%)
8. Sexual behavior	20,000 (0.8%)
9. Illicit drug use	17,000 (0.7%)

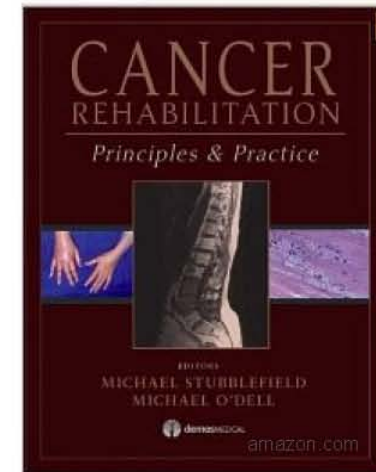
Mokdad AH, et al. *JAMA*. 2004;291(10):1238-45.

Photo: richardlaw.com

Levels of Prevention



Primary Prevention
Secondary Prevention
Tertiary Prevention



Preventive Medicine Specialties



Questions?

F. Douglas Scutchfield, M.D.
Peter P. Bosomworth
Professor of Health Services
Research and Policy

University of Kentucky
College of Public Health



121 Washington Avenue. Suite 212

Phone: 859-218-2024

Email: scutch@uky.edu