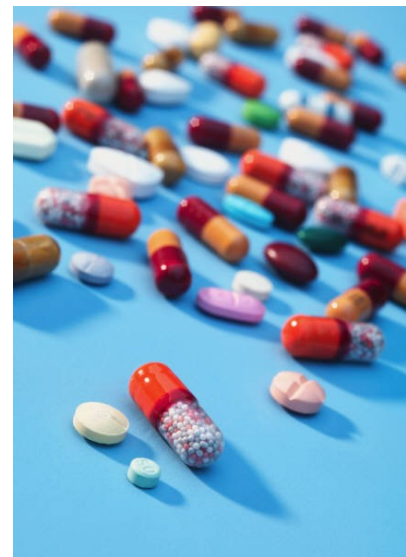


Suicides and Suicide Attempts in Kentucky, 2001-2011



Kentucky Injury Prevention and Research Center

Suicide and Suicide Attempts in Kentucky, 2001-2011

November 2012

Prepared by
Kayla Pope
Svetla Slavova

Released by
Kentucky Injury Prevention and Research Center (KIPRC)
University of Kentucky College of Public Health
333 Waller Avenue, Suite 206
Lexington, Kentucky 40504

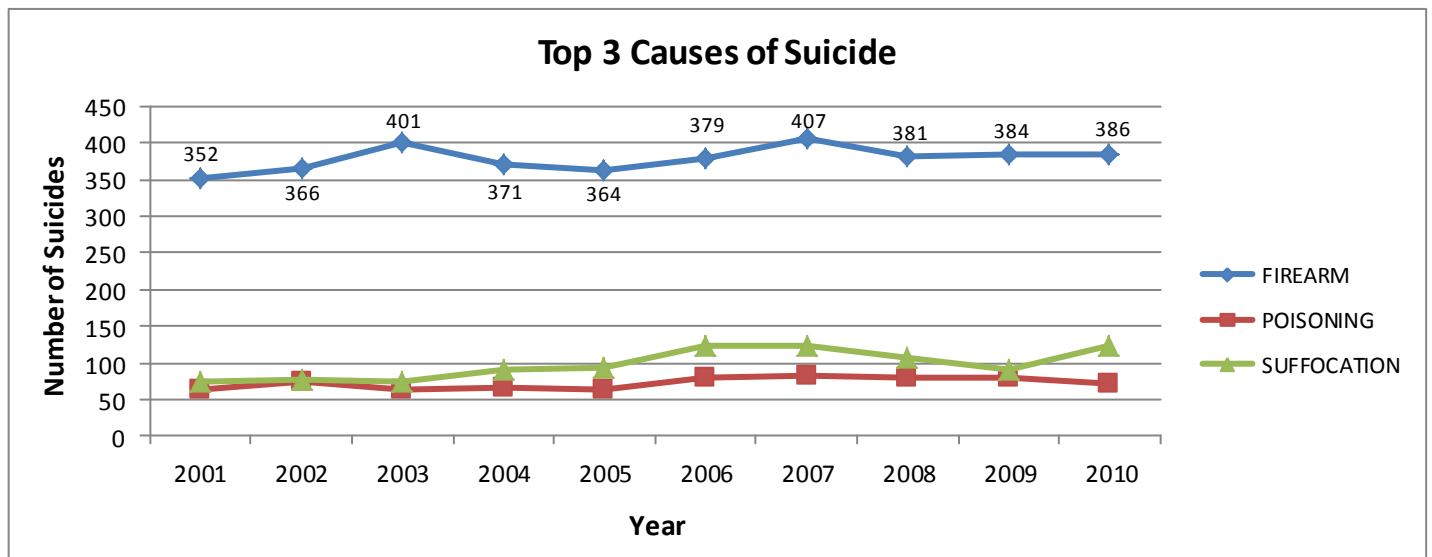
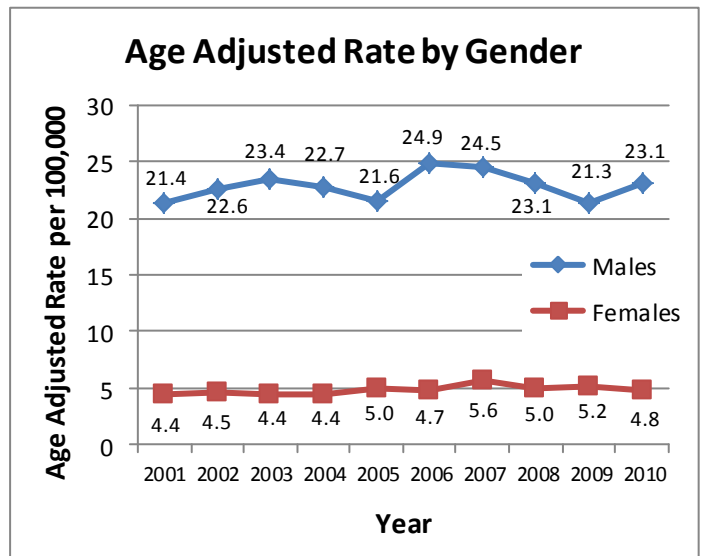
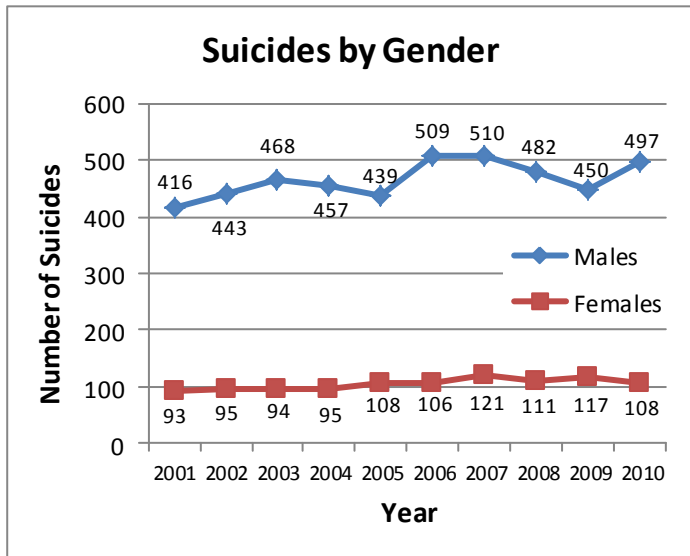
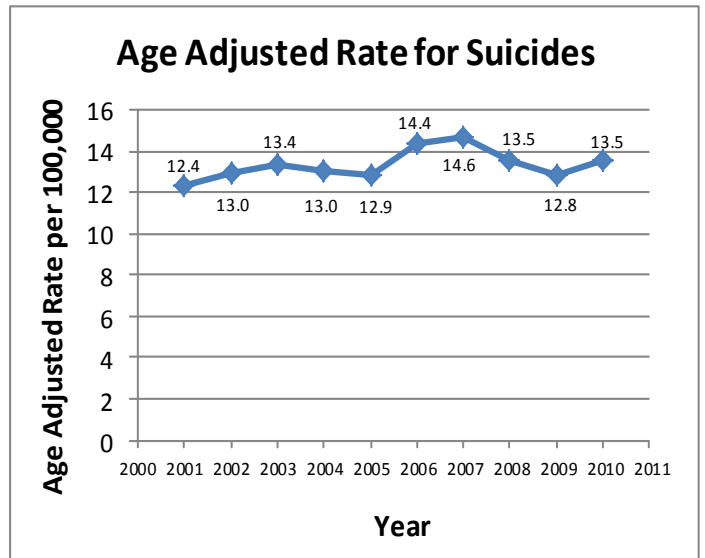
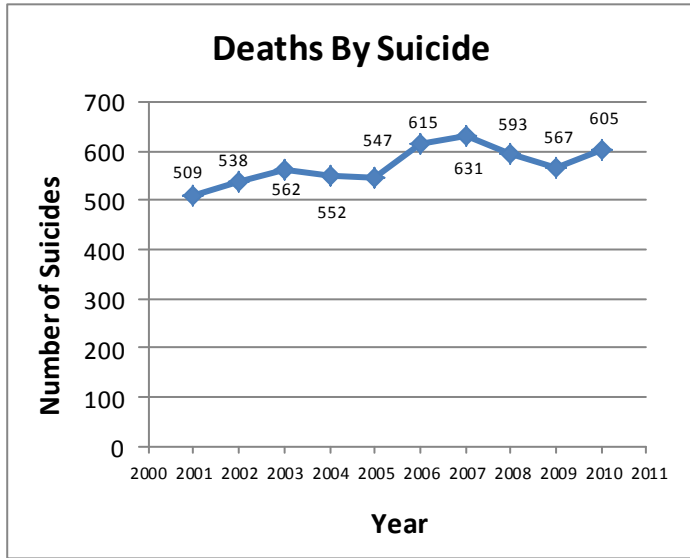
Director
Terry Bunn

For more information contact
Svetla Slavova
Phone: (859) 323-7873
E-mail: ssslav2@email.uky.edu

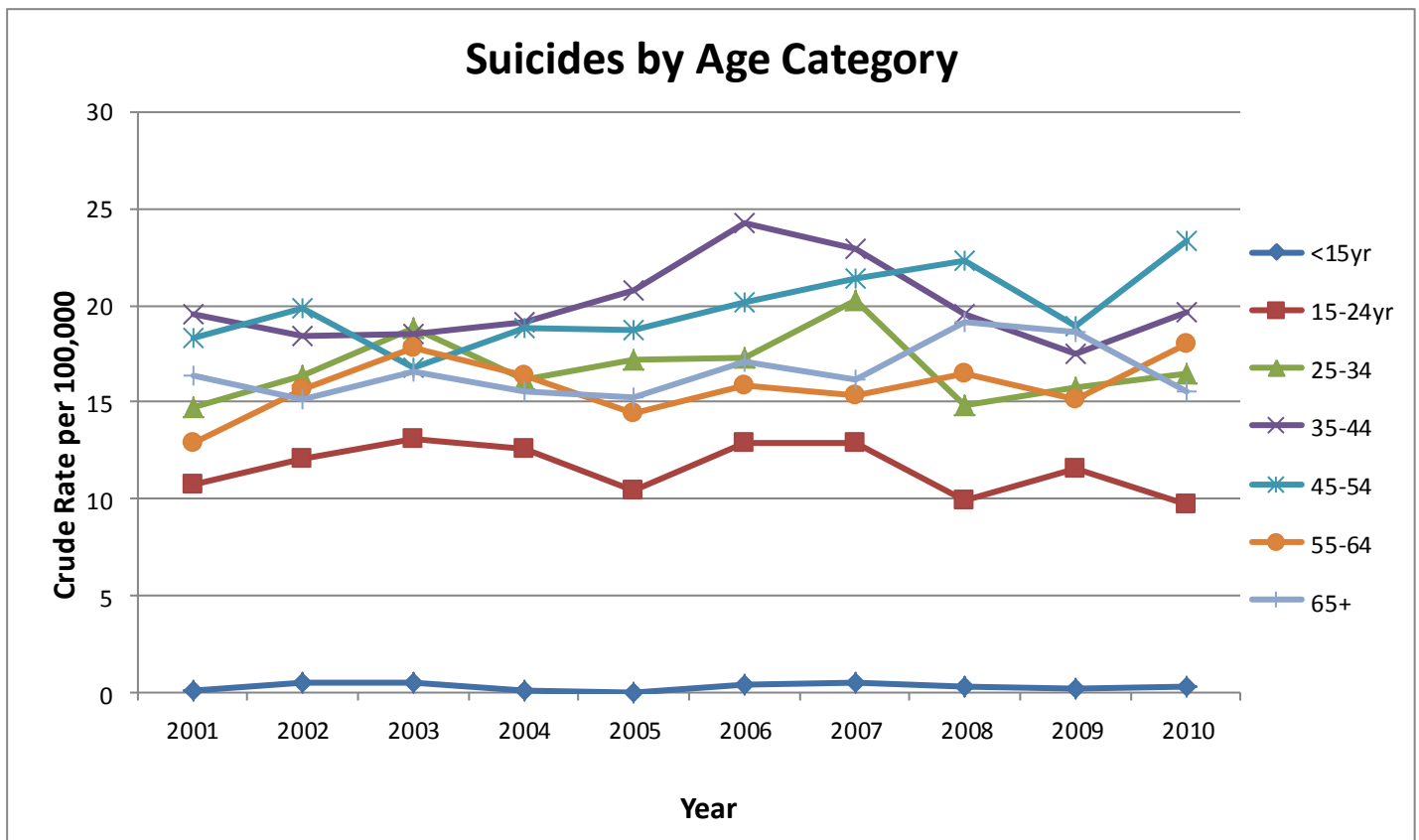
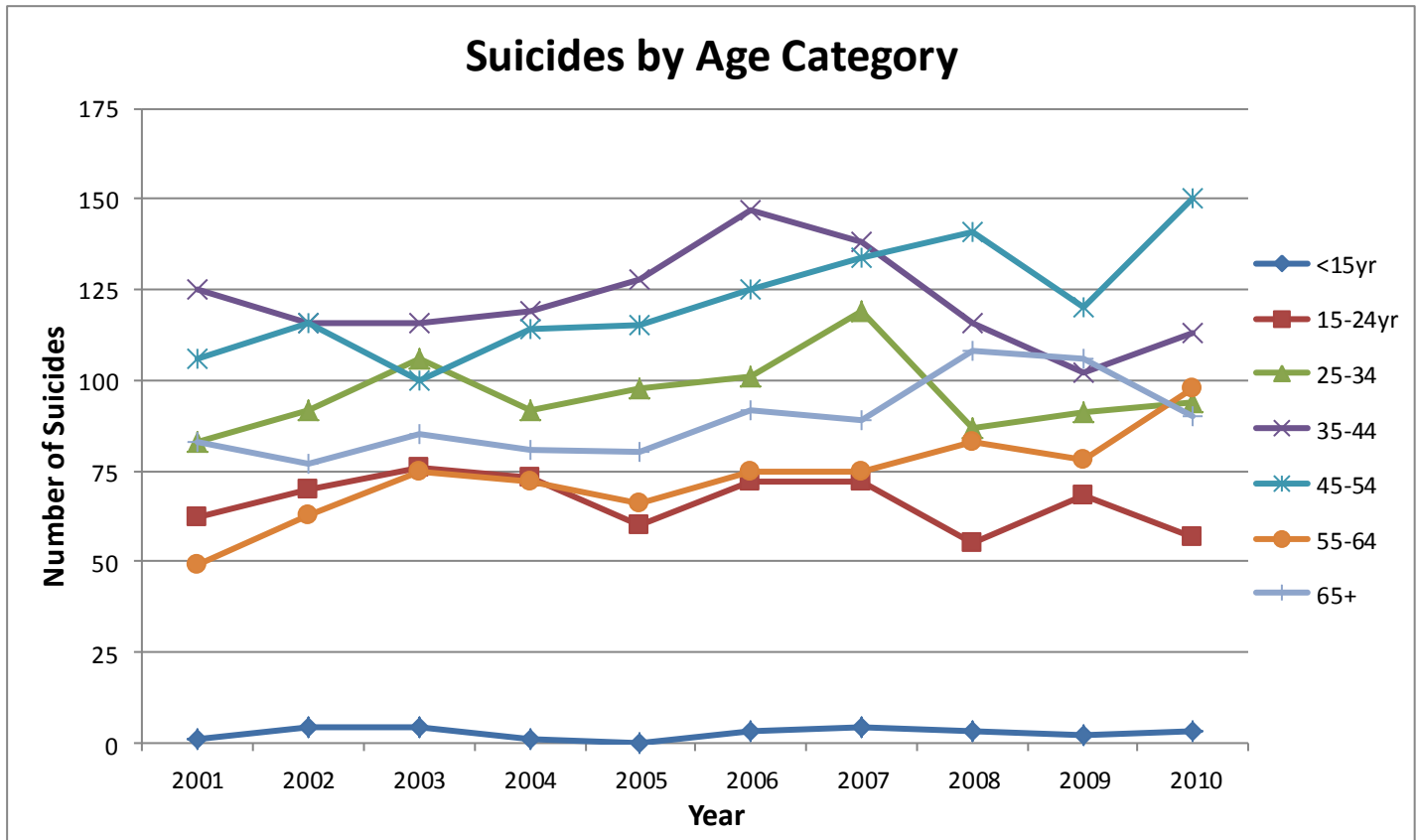
Executive Summary

1. There were 605 suicides among Kentucky residents in the year 2010, up 7% from the 567 recorded in the year 2009.
2. The Kentucky resident age-adjusted suicide rate increased from 12.8 per 100,000 population in 2009 to 13.5 per 100,000 population in 2010, a 5.5% increase.
3. Firearms were the primary means of completed suicide from 2001-2010.
4. Kentucky residents aged 45-54 were the age group that completed suicide most frequently in 2010.
5. The age-adjusted rate for Kentucky self-harm-related hospitalizations increased 7.6% from 2010-2011 (52.5 hospitalizations per 100,000 population in 2010 to 56.5 hospitalizations in 2011).
6. Kentucky females were the gender most often hospitalized for self-harm and most were due to poisonings, over the study period from 2001-2011.
7. Kentucky self-harm hospitalization charges totaled \$42.3 million in the year 2011.
8. The age adjusted rate for Kentucky self-harm related emergency department visits was 77.2 visits per 100,000 population in 2011.
9. Kentucky females visited the emergency department for self-related harm more often than males from 2008-2011.
10. Kentucky residents aged 15-24 were the age group that most frequently visited the Kentucky emergency department related to self-harm from 2008-2011.
11. Kentucky self-harm related emergency department visit charges totaled \$7.92 million in the year 2011.
12. The highest number of Kentucky emergency department visits for self-harm were due to poisonings from 2008-2011.

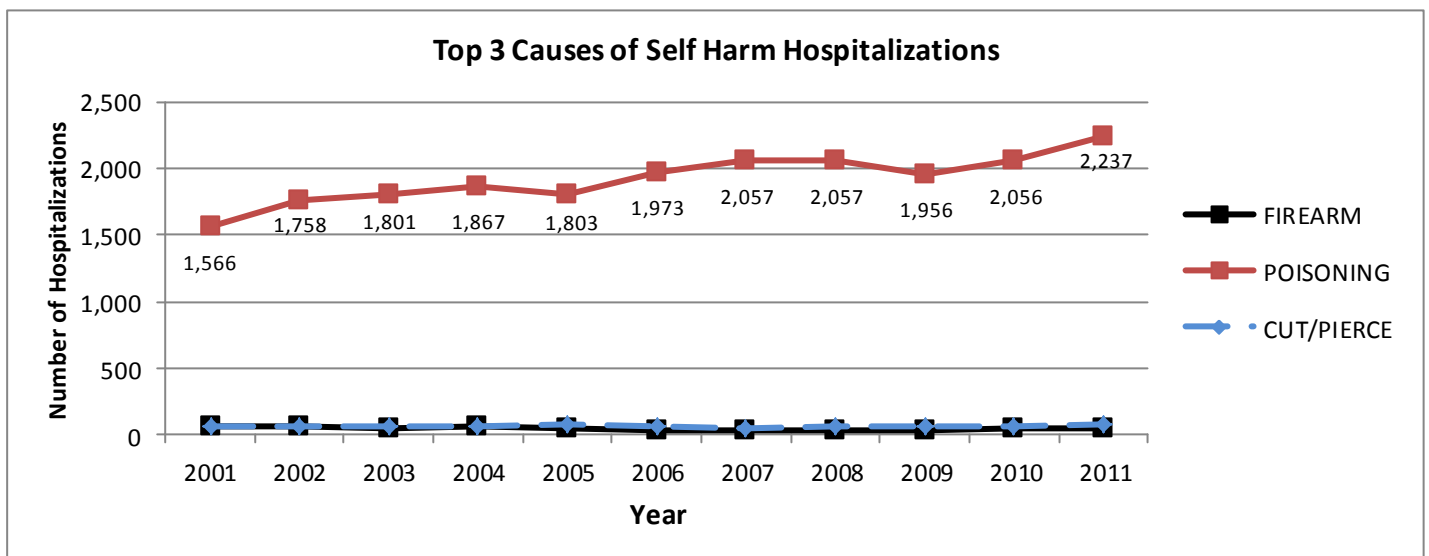
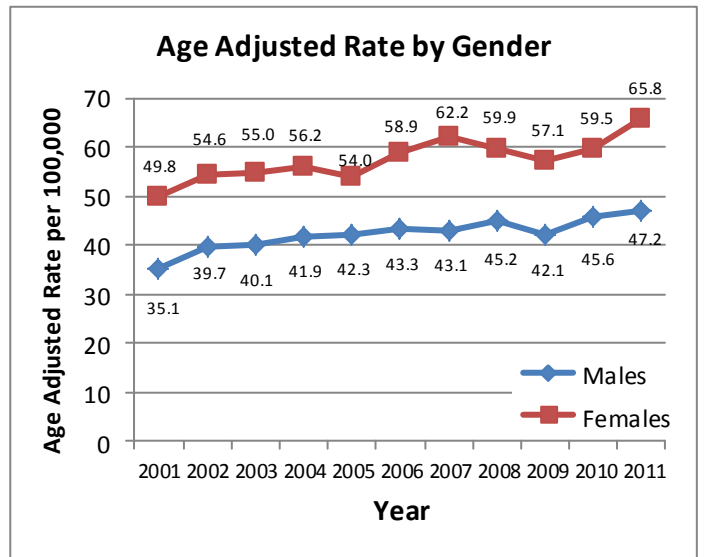
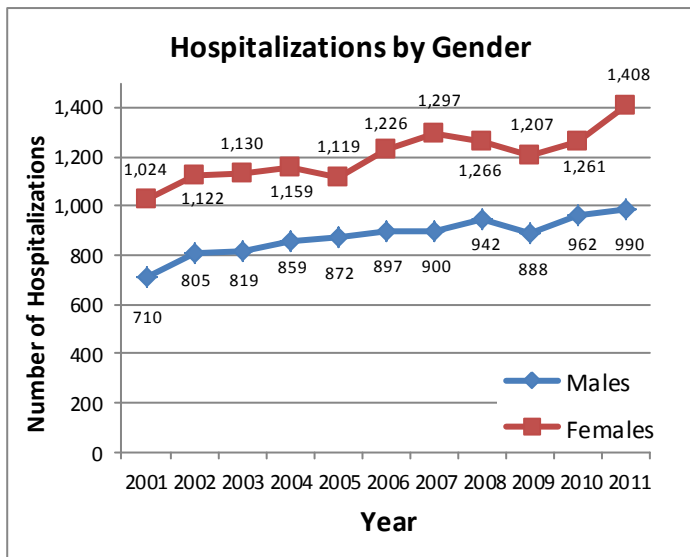
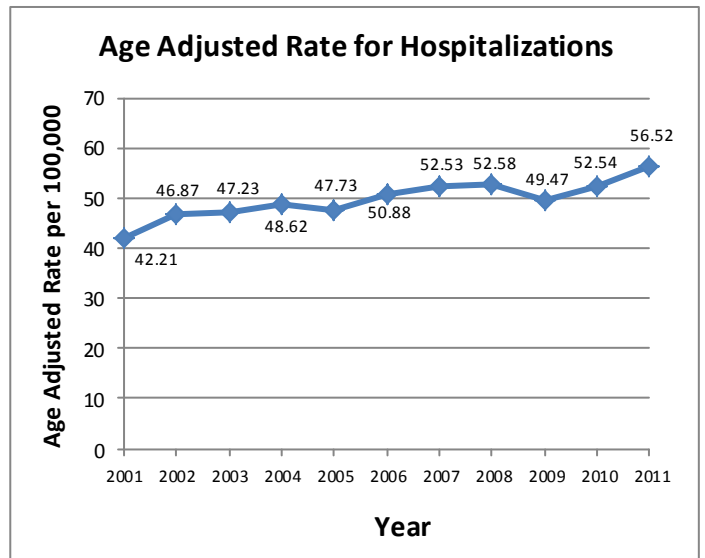
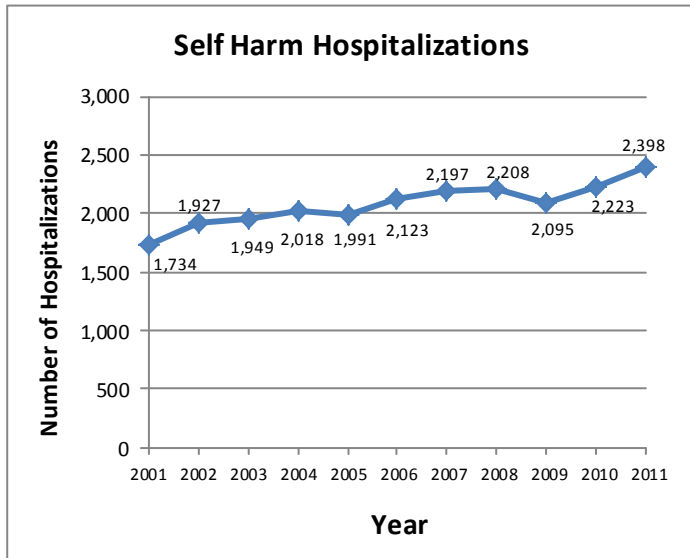
Suicide 2001-2010



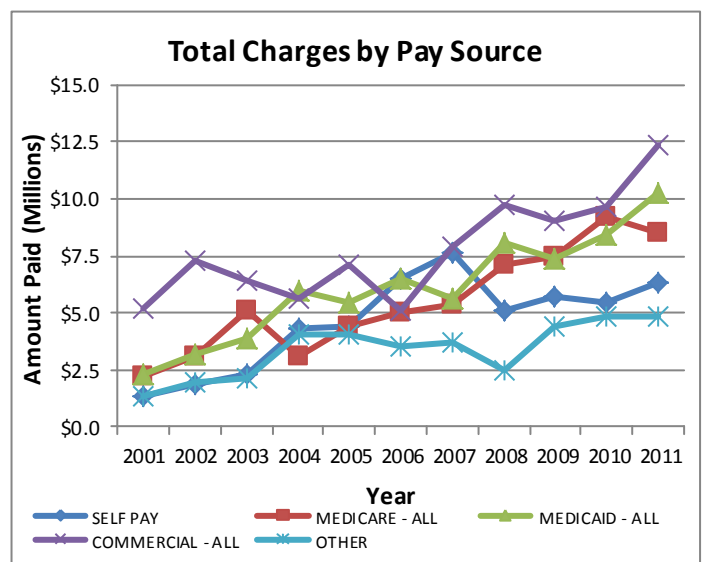
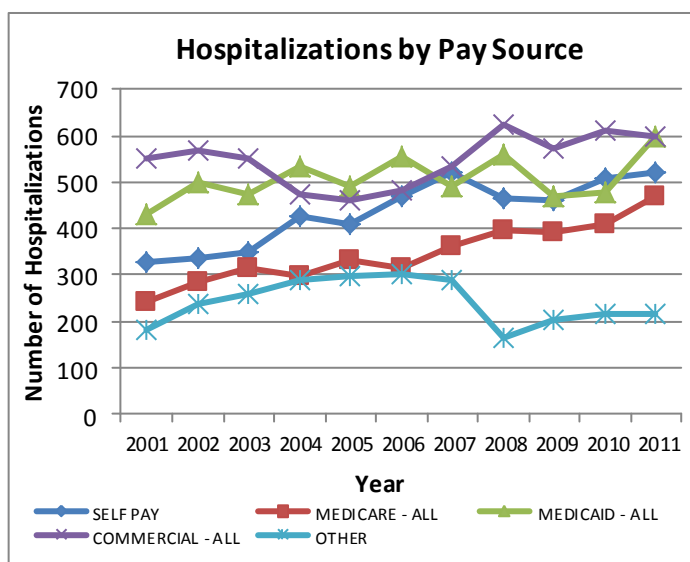
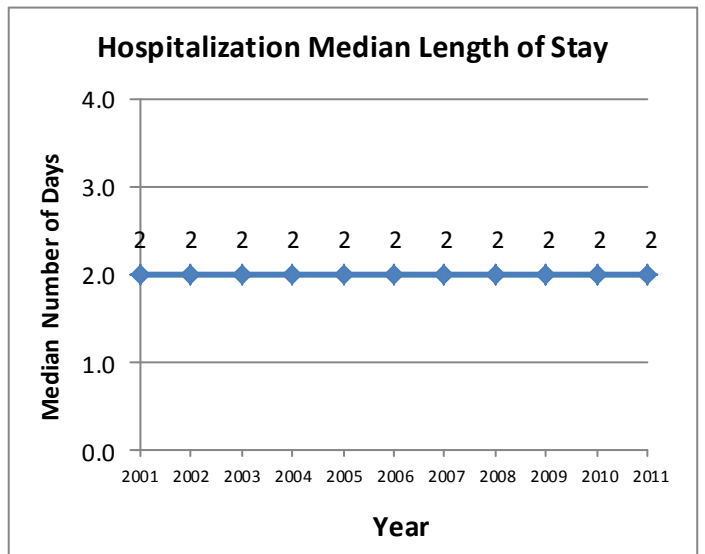
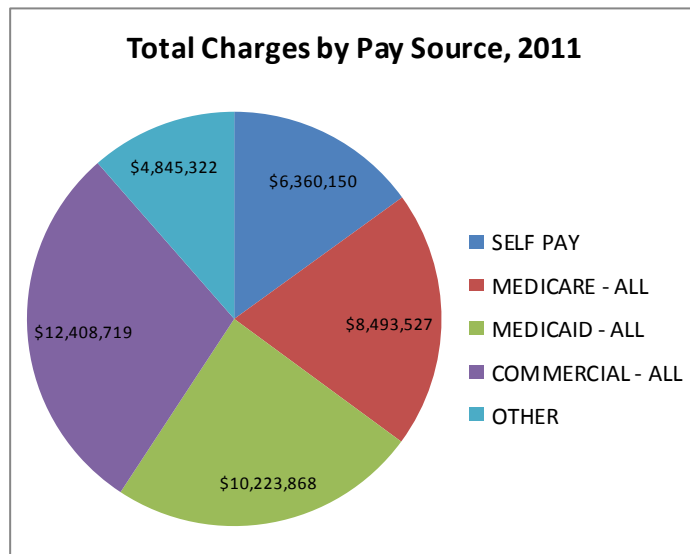
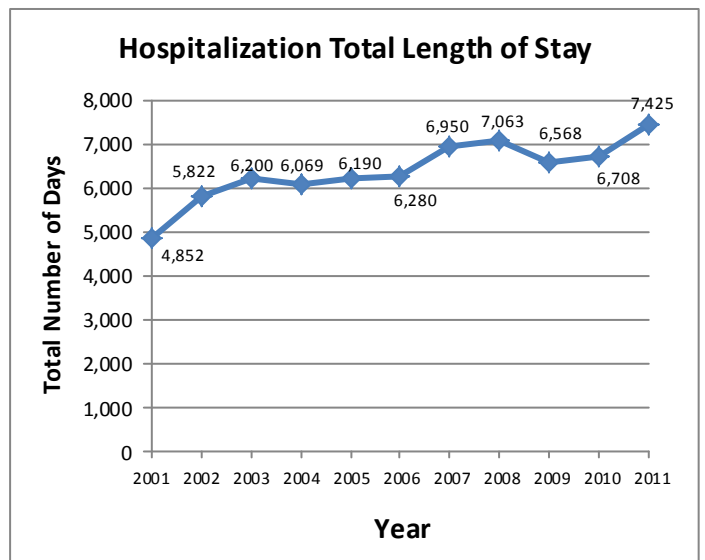
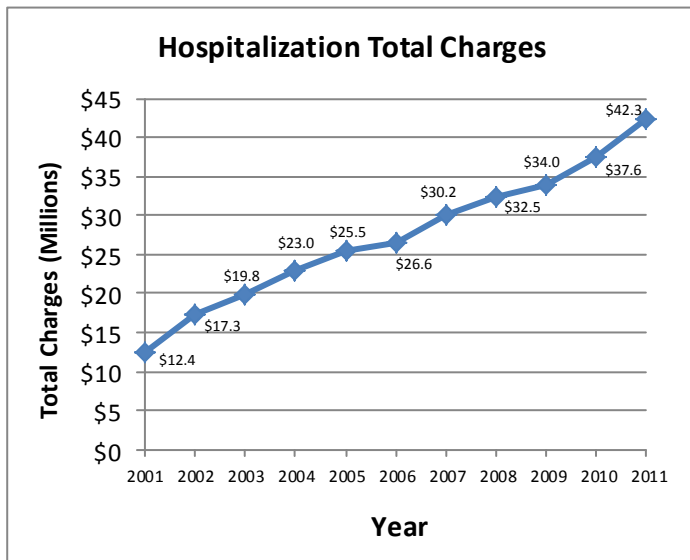
Suicide 2001-2010



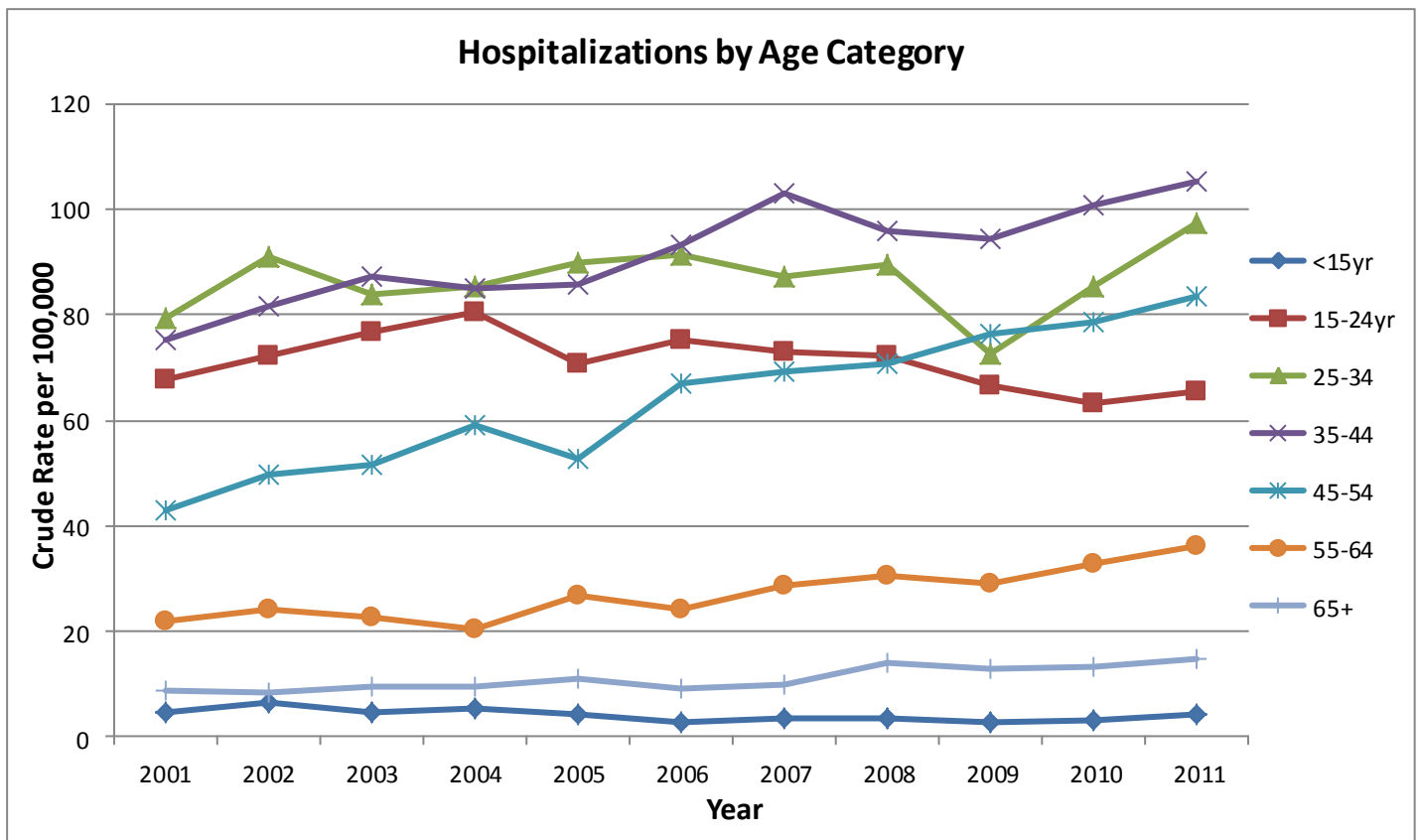
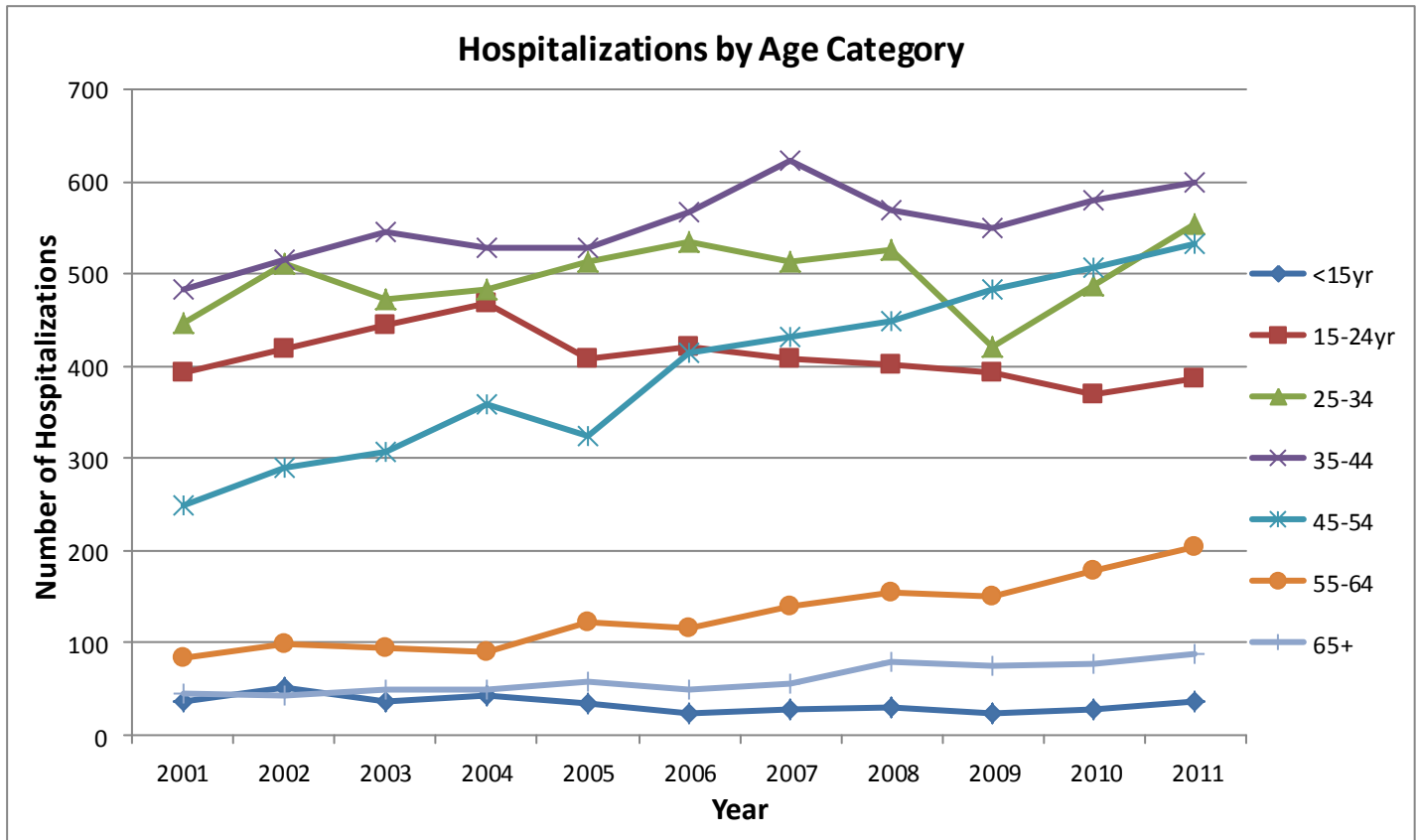
Hospitalizations 2001-2011



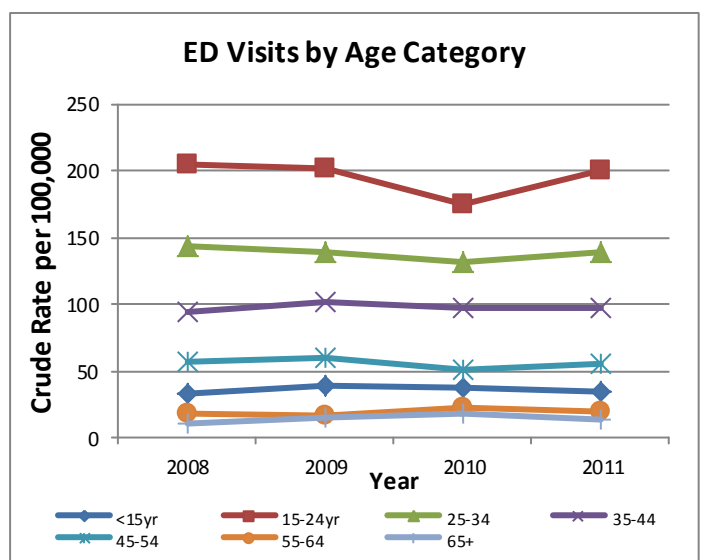
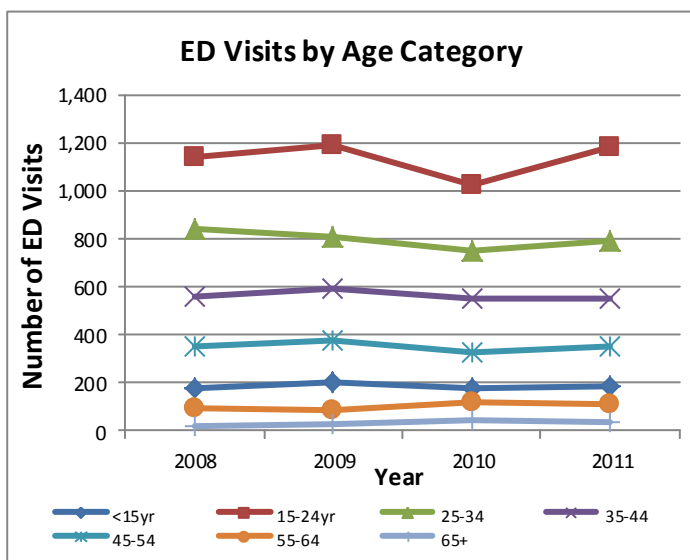
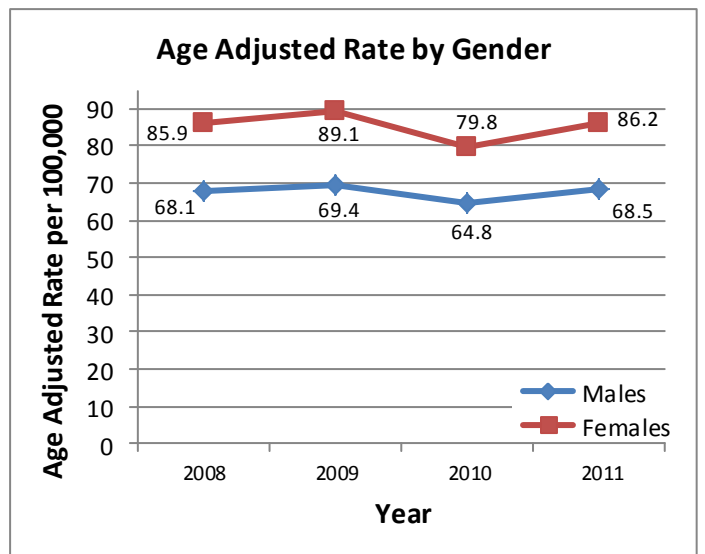
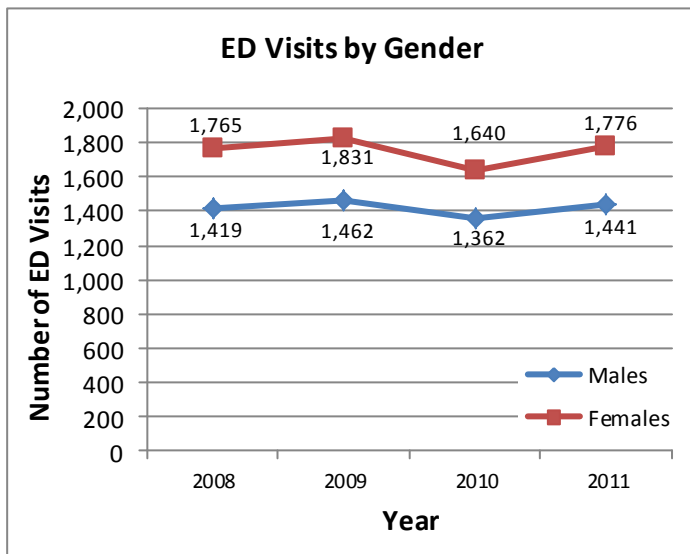
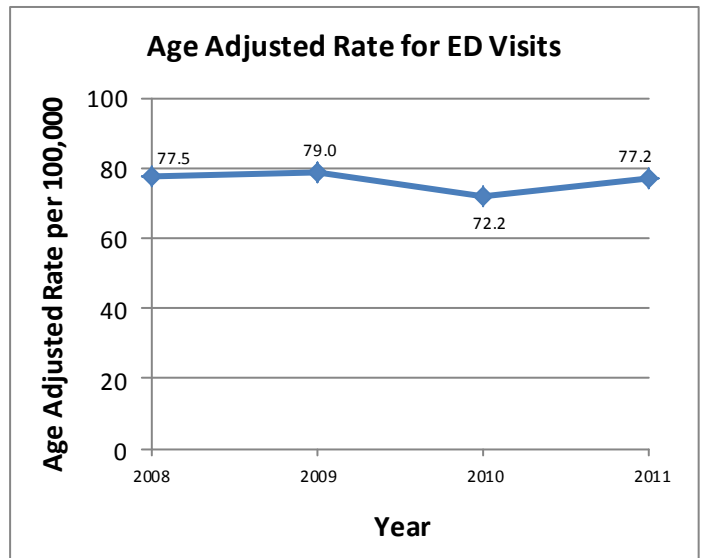
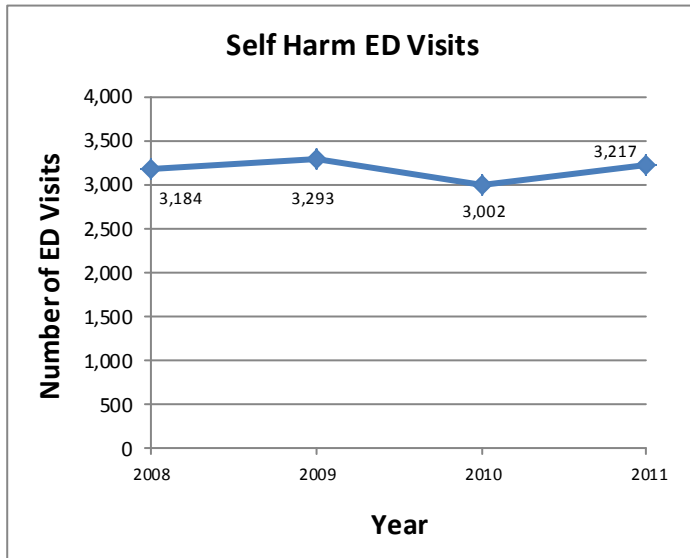
Hospitalizations 2001-2011



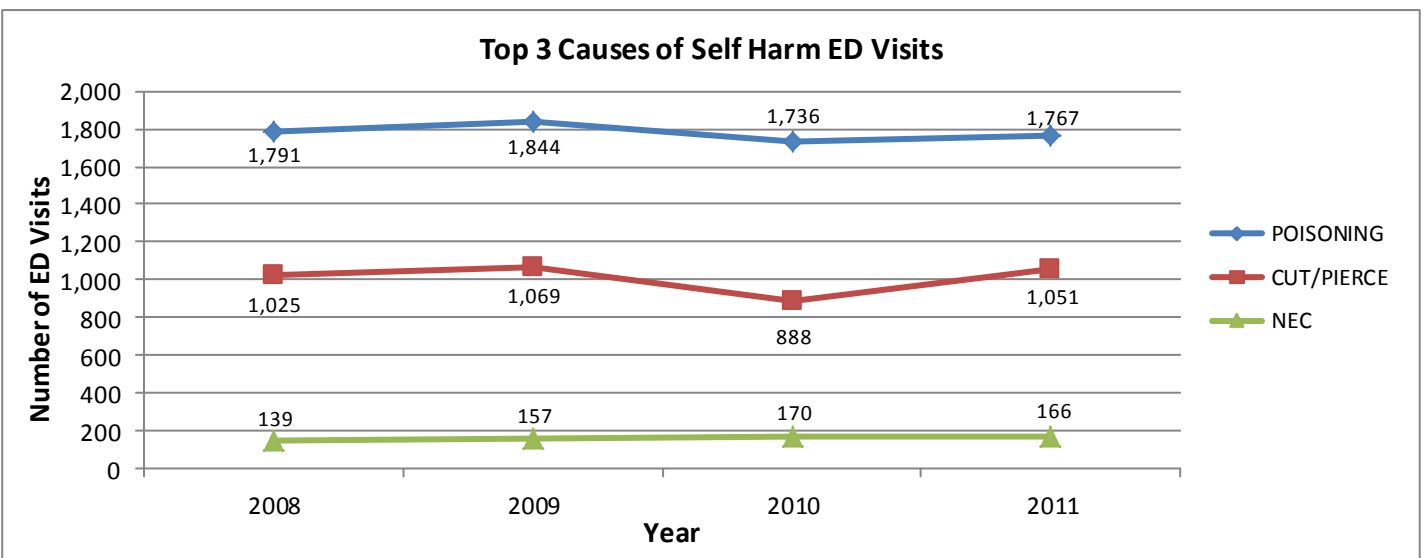
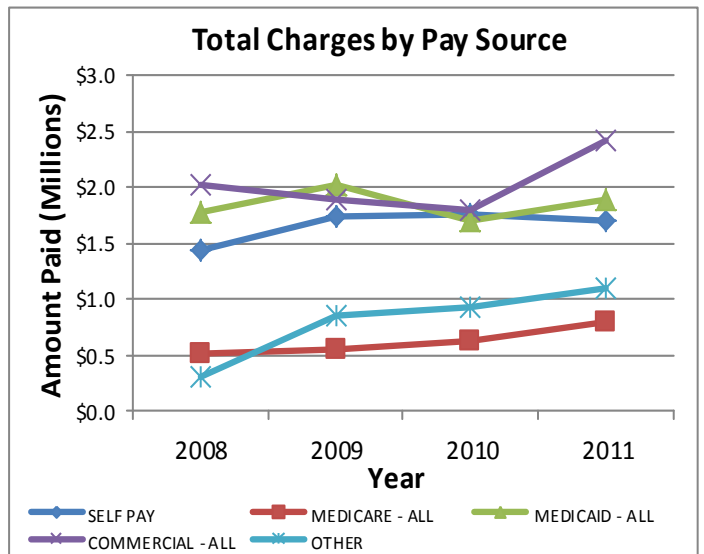
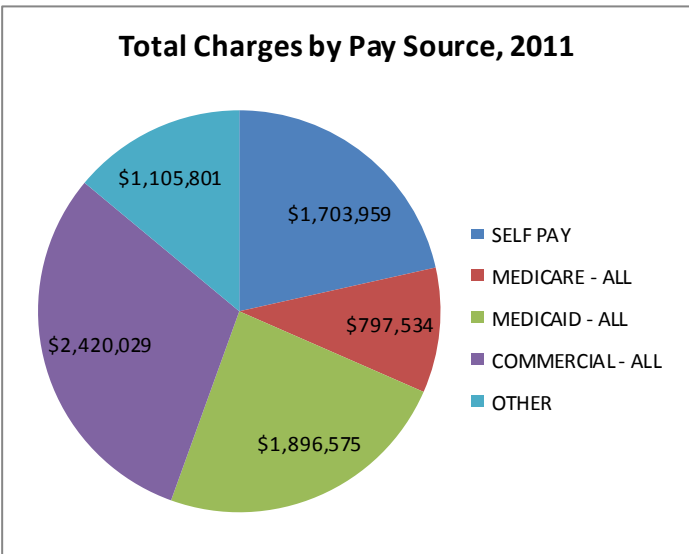
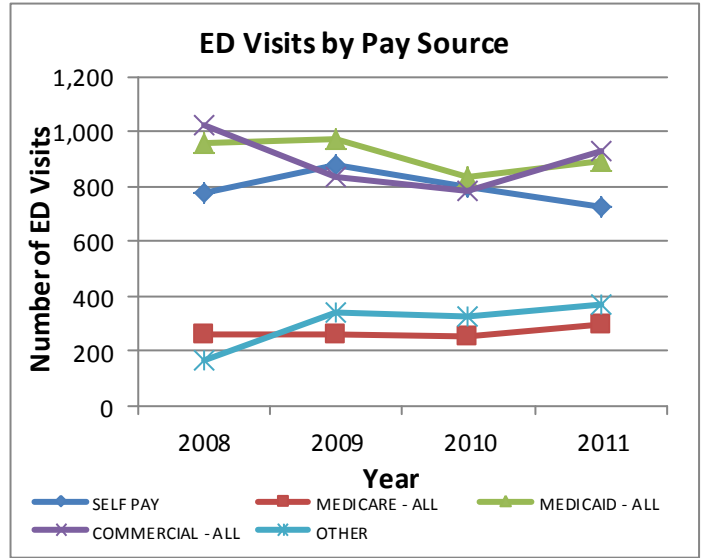
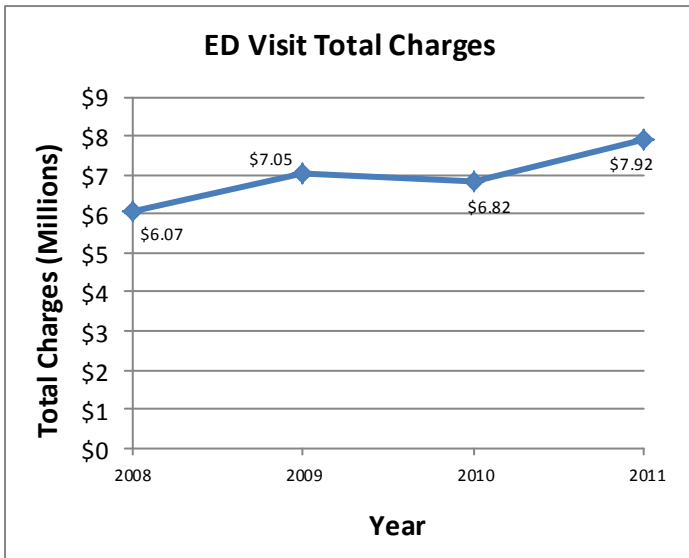
Hospitalizations 2001-2011



Emergency Department Visits 2008-2011



Emergency Department Visits 2008-2011



Data Sources, Methods, and Definitions

The data sources, methods, and definitions used in this report are based on the *State Injury Indicators report: Instructions for Preparing 2010 Data, Atlanta, Georgia, May 2012*, a publication of the National Center for Injury Prevention and Control, Centers for Disease Control and Prevention.

Suicides

The source for mortality data is the Kentucky Vital Statistics death certificates for Kentucky residents, 2001-2010. Each death certificate contains one underlying cause of death and additional multiple causes of death. The underlying and contributing causes of death are coded according to the International Classification of Diseases, 10th revision. Suicide deaths are identified as deaths with any of the following ICD-10 codes as an underlying cause of death: *X60-X84 Intentional self-harm; Y87.0 Sequelae of intentional self-harm; U03 Terrorism-intentional self-harm.*

Suicide Attempts

The sources for morbidity data were the Kentucky inpatient hospital discharge (HD) uniform billing electronic records, 2000 -2011, and the electronic emergency department (ED) visit records, 2008-2011. The HD and ED data are coded according to the International Classification of Diseases, 9th revision, Clinical Modification. The principal diagnosis code is the diagnosis established to be the main reason for the hospitalization/ED visit. Other conditions/diagnoses that exist and affect the diagnosis, treatment, or length of stay in the health facility, are also coded and called secondary diagnoses. Injury diagnoses (especially principal injury diagnosis) should be supplemented (when circumstances of the injury are known) with an external-cause-of-injury code that describes the external cause and the intent of injury (e.g., unintentional, assault, self-harm, or undetermined).

For the purpose of this report an injury subset for hospitalizations was created first by selecting discharges having a principal diagnosis code in the following ranges: *800–909.2, 909.4, 909.9, 910–994.9, 995.5–995.59, 995.80–995.85*. An injury subset for emergency department visits was created similarly, but also included visits having a valid external cause of injury code regardless of the principal diagnosis. Suicide attempts were then identified as records in the hospital or ED injury subsets with first valid external-cause-of-injury code in the *range E950-E959 Suicide and self-inflicted injuries.*

Data for Kentucky residents treated in the neighboring states were not available and not included; therefore, the presented counts and rates may underestimate the extent of the problem in the state.

Age-adjusted mortality and morbidity rates were based on 2000 U.S. standard population.

For detailed information on how the state suicide indicators compare to other injury indicators like motor-vehicle crashes, poisonings, traumatic brain injuries, homicides, and other, please review the Kentucky Injury Indicators reports available on the Kentucky Injury Prevention and Research Center website.